



# PlanSwift Professional 10.3.0

## Release Date: May 18th 2021

Version 10.3.0 is a scheduled release of PlanSwift that includes speed and performance gains, activation and deactivation workflow improvements, new shape count types, page scale in the UI, a new Sample Project, updates to the Getting Started pages, several bug fixes and fixes to sample content.

### Table of Contents

<b>Changes</b> .....	<b>1</b>
<b>Speed and Performance Gains</b> .....	<b>1</b>
<b>Activation and Deactivation Workflow Improvements</b> .....	<b>2</b>
<b>New Shape Count Types</b> .....	<b>5</b>
<b>New Sample Project with ConstructConnect branding</b> .....	<b>6</b>
<b>Page Scale Always displayed in UI</b> .....	<b>8</b>
<b>New Getting Started Page Logic</b> .....	<b>9</b>
<b>Fixes</b> .....	<b>10</b>
<b>Improvements to Sample CSI Assemblies</b> .....	<b>10</b>

## Changes

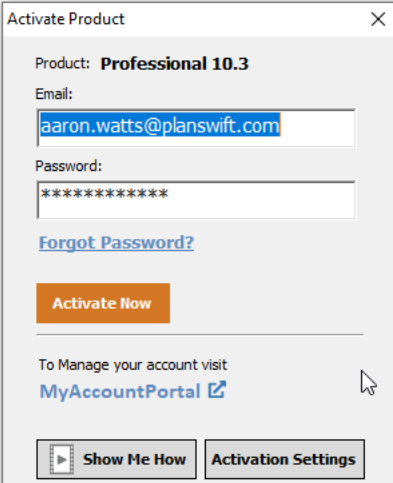
### Speed and Performance Gains

PlanSwift now opens large projects much faster, indexes items much faster, and overall processing and ordering of items have been optimized in the core code.

## Activation and Deactivation Workflow Improvements

Activation of PlanSwift licenses is a critical workflow for practically all users of PlanSwift. Multiple issues with activation have been updated and improved. These changes include:

1. Updated terminology – changed wording from “Remove” licenses to “Deactivate” licenses
2. Updated all user forms with consistent UI for Activating, Deactivating, and Activation Settings
3. Removed Manual Activation on forms by default (It can be enabled in Activation Settings)
4. Improved Auto-Deactivation Settings to include 2 new options to hide deactivation messages
5. Added number of days remaining until Next Reactivation Date on Activation Success messages
6. Added link to MyAccount Portal on the Activation modals
7. Moved Activation buttons to PlanSwift Tab and off of Help Tab
8. Added better messaging for password errors, insufficient seats, expired trials, and more
9. Updated activation Welcome to PlanSwift message for new installations and updates



Activate Product

Product: **Professional 10.3**

Email:

Password:

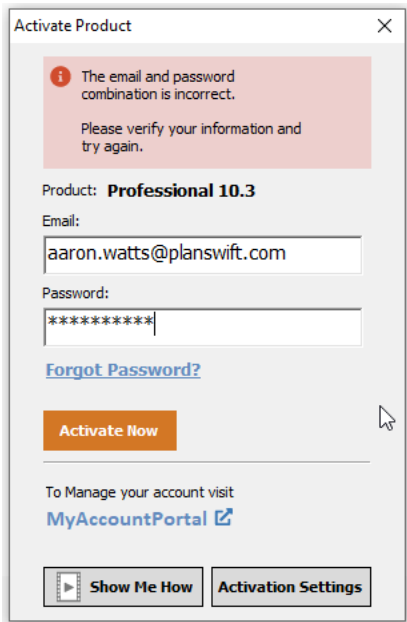
[Forgot Password?](#)

**Activate Now**

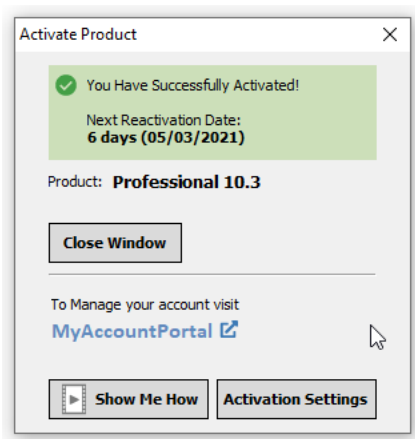
To Manage your account visit  
[MyAccountPortal](#)

[Show Me How](#) [Activation Settings](#)

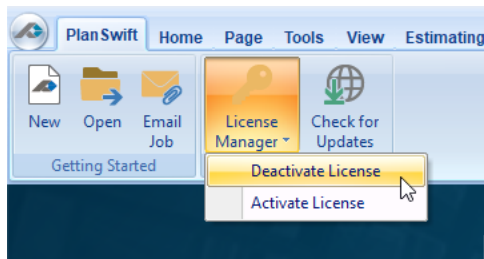
*New activation windows with all new User Interface, new link to MyAccountPortal, and direct access to Activation Settings (mostly used for Plugin Licenses)*



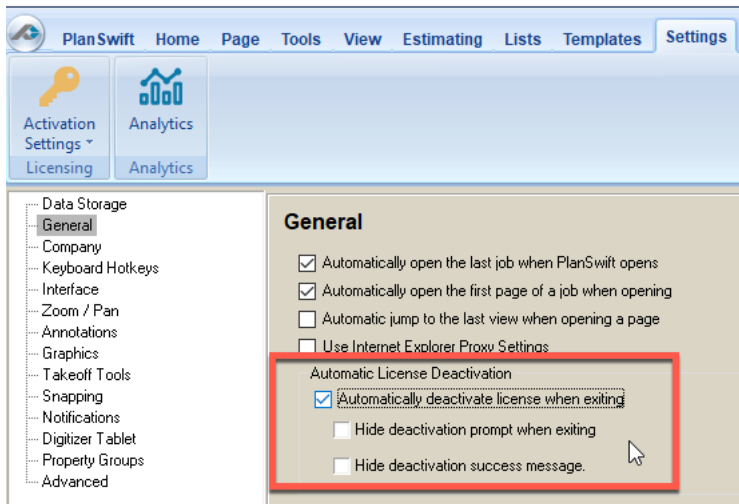
*New activation windows with error message for incorrect email and/or password*



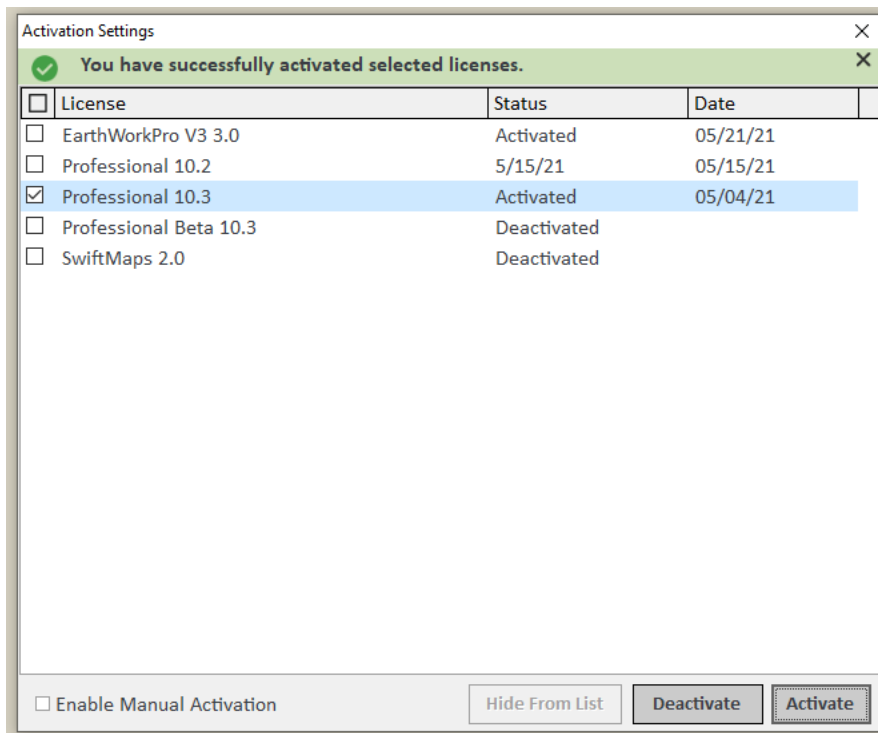
*New activation windows with success message and number of days until Next Reactivation Date*



*Updated terminology to be consistent (Activate and Deactivate) and changed location of Activation License Manager to PlanSwift Tab*



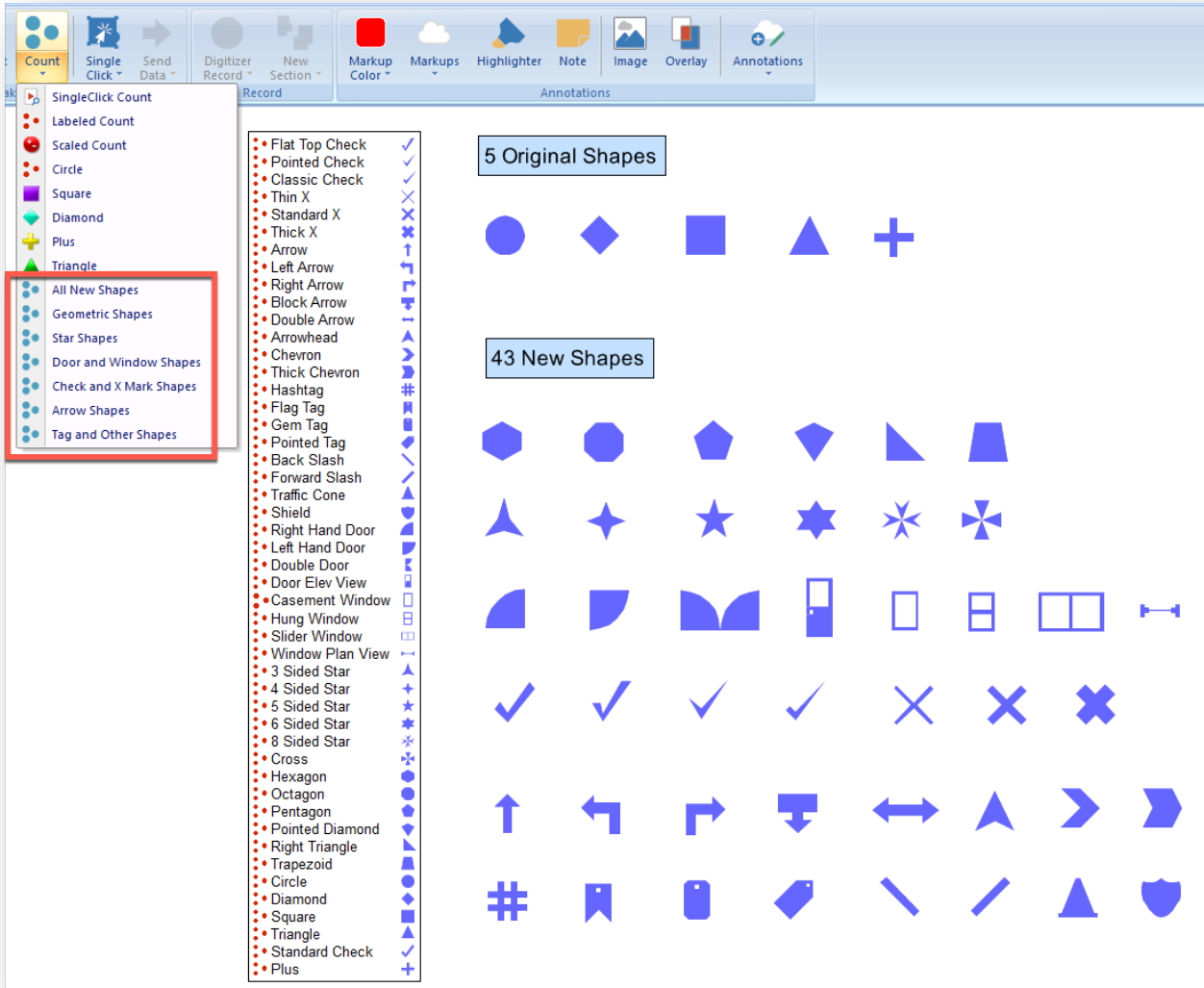
*Added 2 new setting options to Automatic Deactivation that allow users to hide informational messages*



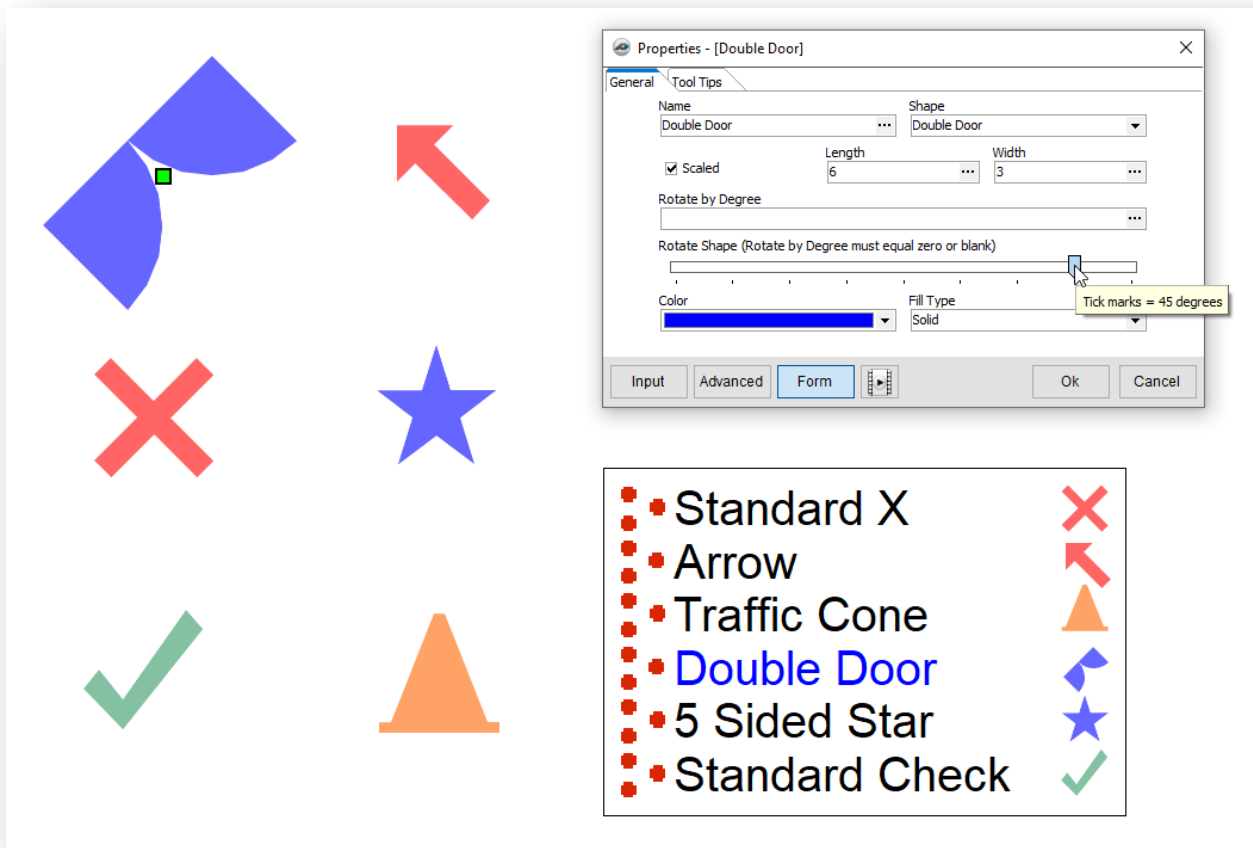
*Updated Activation Settings to include success and error messages, Next Reactivation Date column, and option to Enable Manual Activation*

## New Shape Count Types

Added 43 new shapes which is more the 8x the number of shapes previously included with PlanSwift. New shapes are accessed in the drop-down menu for Count Takeoff Items. The new shape count types also include properties to rotate shapes in 3 ways: entering a number in degrees, using a slider control, or using a hotkey (by tapping “O” on the keyboard).



*All 43 new shapes can be easily accessed from the drop-down menu for the Count Takeoff Items*



Properties - [Double Door]

General

Name: Double Door

Shape: Double Door

Length: 6

Width: 3

Rotate by Degree: 45

Color: Blue

Fill Type: Solid

Tick marks = 45 degrees

Standard X	✗
Arrow	↖
Traffic Cone	▲
Double Door	◀▶
5 Sided Star	★
Standard Check	✓

*All new shapes are displayed prominently in the Legend with Color and Rotation choices made by users*

## New Sample Project with ConstructConnect branding

New Sample Project includes samples for Commercial and Residential Jobs, ConstructConnect branding, Flex Warehouse Plans, new link to Live Integration to Excel, and updated the Introduction Page design.





## Ready for a Quick Demo?

Find out how PlanSwift works for you:

888-752-6794 ext. 1 or


[Schedule a Free 1-on-1 Demo](#)

Connect with us on Social Media







Welcome to PlanSwift


Click on the links on this page to learn more about the software and when you're ready, launch a Sample Job to explore how takeoff works on a full plan set.




View Sample Job  
Commercial



View Sample Job  
Residential



Getting Started



[Watch More Videos](#)

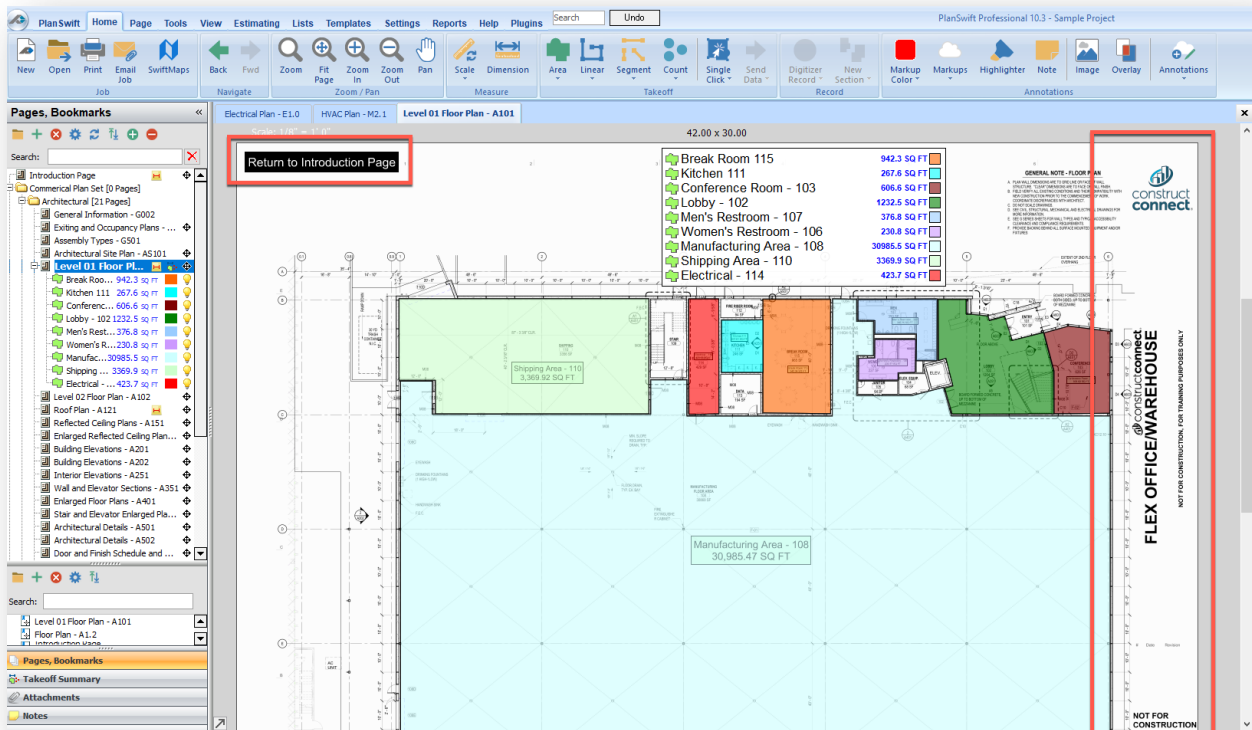
[Access Our Knowledge Base](#)

[Live Integration to Excel](#)

[Purchase PlanSwift](#)

*New Sample Project Introduction Page design with links to Commercial and Residential plans*

7

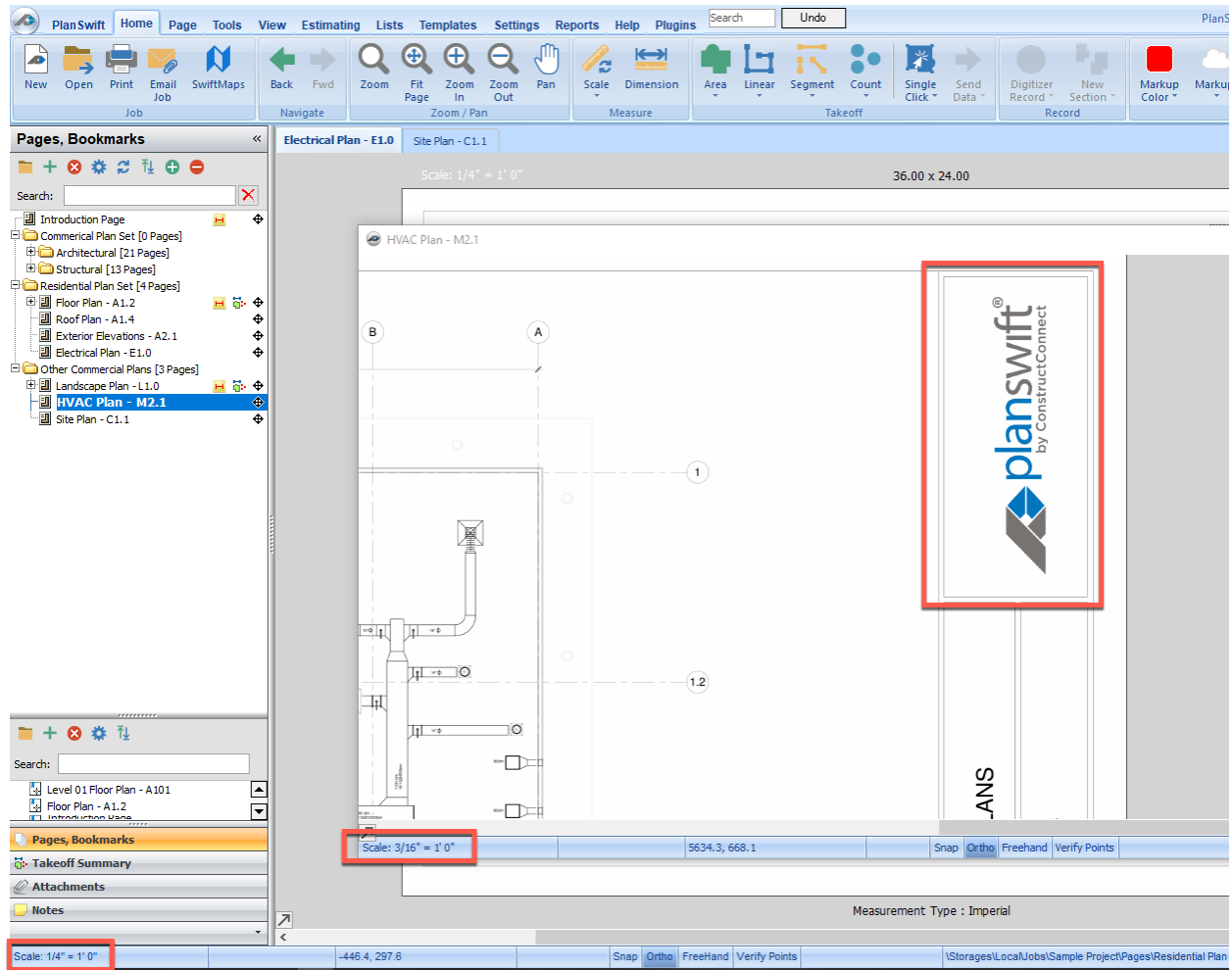


Added Flex Warehouse Plans to new Sample Project and included links for easy navigation back to the Introduction Page

## Page Scale Always displayed in UI

New for 10.3 we added the page scale in the bottom left corner of the user interface so that users can always see the page scale.

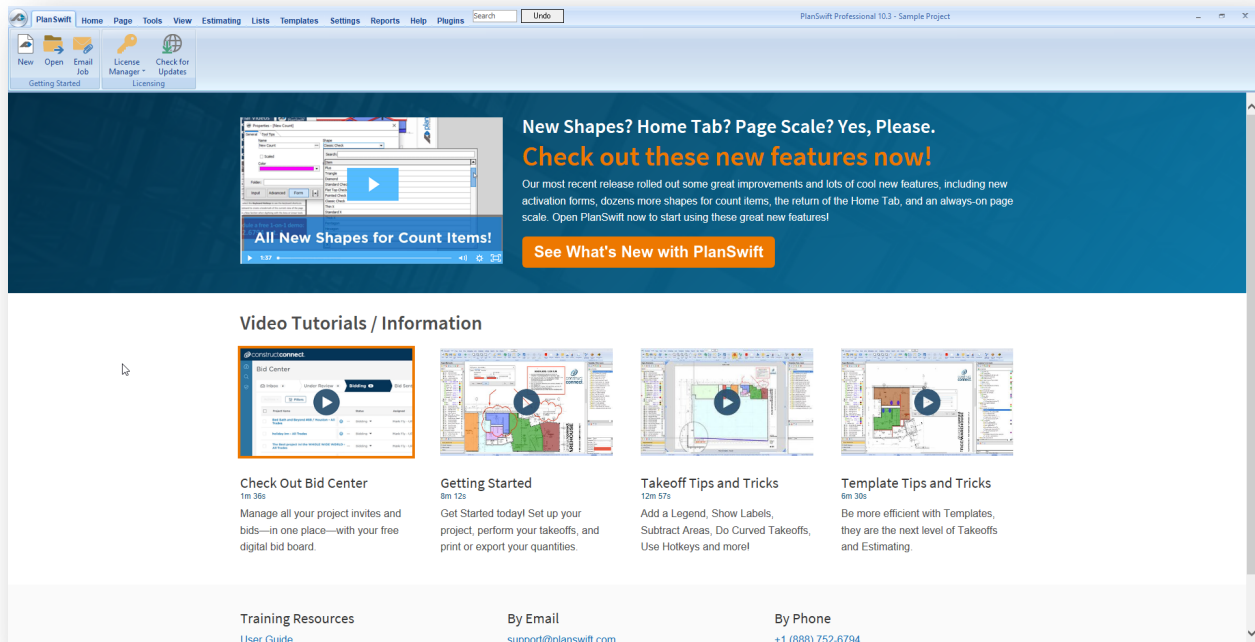




*Page Scale displayed in bottom left corner of UI for docked and undocked pages. Also shown here, ConstructConnect branding added to the original PlanSwift Sample Project Plans*

## New Getting Started Page Logic

PlanSwift Tab will display 5 times for users to allow the PlanSwift Product Team to communicate in the application with dynamic messaging and then Home Tab will display thereafter when user opens PlanSwift.



*New Getting Started page design will be updated periodically with messaging from the Product Team.*

## Fixes

We fixed a number of bugs in this version. The biggest and most complicated bug being the Item Order Indexing which required major refactoring to old code.

- Item Order Indexing performance issues (addressed a major issue with indexing in PlanSwift that was primarily affecting a large Enterprise customer, Core & Main)
- Error message when adding New Note from the Left side Pane
- PlanSwift Sample Project Scrollbar Property Out of Range
- Time and Date format not matching in Delphi and Windows System
- Fixed Segment Wall Area Type and Linear Wall Area Type issue being the same Wall Area Type

## Improvements to Sample CSI Assemblies

- Connected inheritance issues on 14 CSI Assemblies for Parts not properly connected and inheriting values from the parent item.