



PlanSwift Professional 10.3.1

Release Date: Jan. 17th, 2021

Version 10.3.1 is a scheduled release of PlanSwift that includes:

Contents

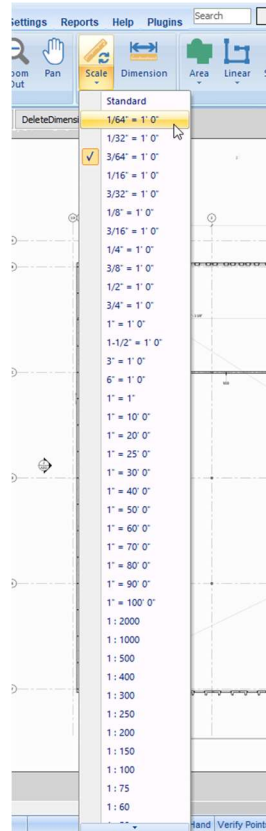
| | |
|---|----------|
| <i>New or Improved</i> | 2 |
| Additional Scales | 2 |
| Updated “Show me how” Videos | 4 |
| <i>Changes</i> | 5 |
| <i>Known Issues</i> | 5 |

New or Improved Additional Scales

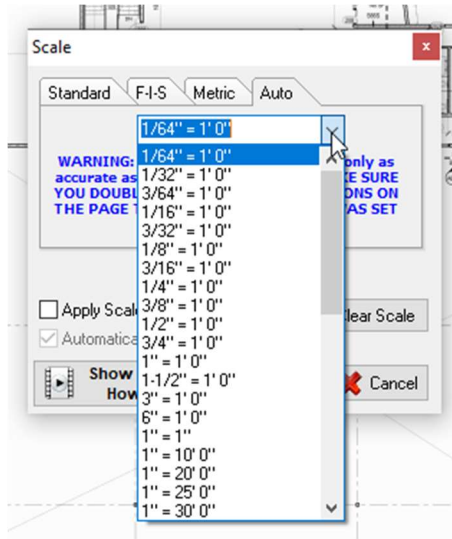
Based on feedback from PlanSwift users, we've added several Scales:

| | |
|--------------|--------|
| 6" = 1'0" | 1:5 |
| 1/64" = 1'0" | 1:25 |
| 3/64" = 1'0" | 1:75 |
| | 1:150 |
| | 1:250 |
| | 1:400 |
| | 1:2000 |

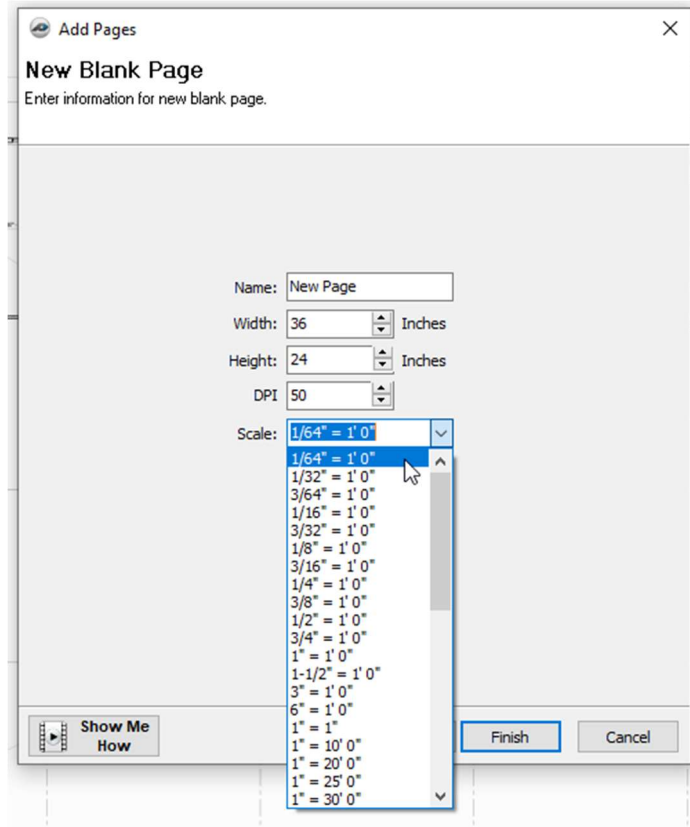
You'll see these new Scales in the different Scale drop-downs:



Invoking the drop-down from the toolbar



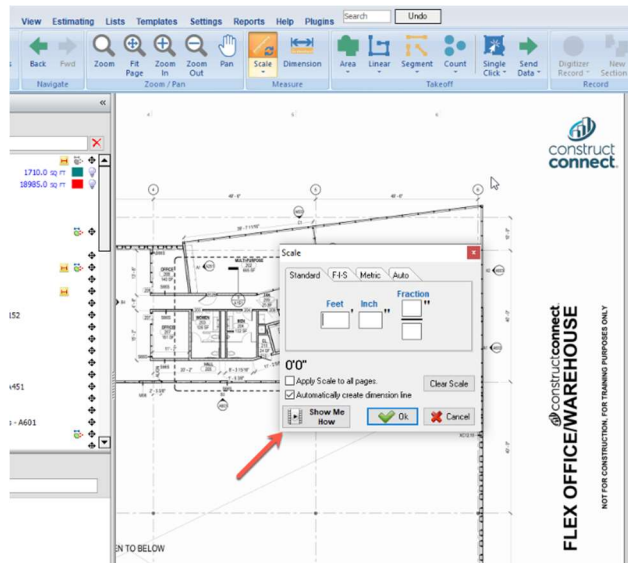
Clicking the Scale button and then clicking on the Auto tab



When adding a New Blank Page to the project

Updated “Show me how” Videos

Various screens and dialog boxes in PlanSwift 10 include a “Show Me How” button that links to a relevant video – we are in the process of updating many of these videos to make them more user-friendly and useful to our users and trainers. You won’t need to install product updates to see these updated videos (in the future), they’ll happen on our end. We are working on a mechanism to log all training and “Show me how” videos in our KnowledgeBase so you can identify future updates easily.

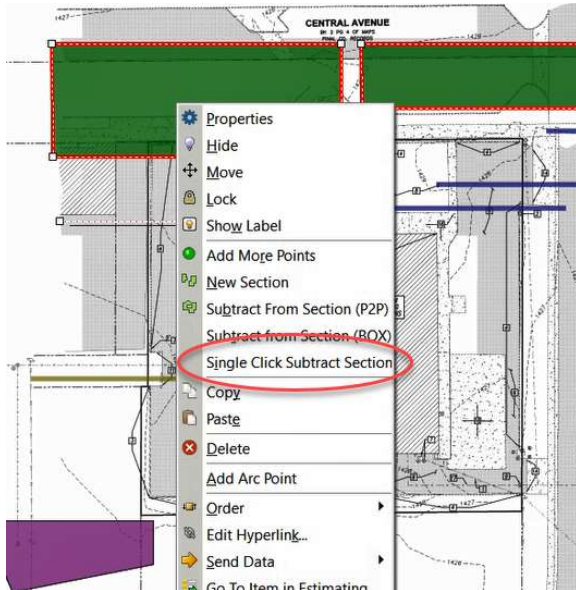


We’ve updated these videos, more are planned:

- Starting a New Project
- Setting a Page Scale
- Opening a Project
- Creating a New Area
- Creating a New Count
- Creating a New Segment
- Creating a New Linear
- Activating PlanSwift

Changes

We removed the option “Single Click Subtract Section” from the area takeoff object context menu that was never implemented. Because this functionality was never completed, trying to use it caused a program error and the safest solution, for the time being, is to simply remove the option from the menu.



Known Issues

- After importing a Job using PlanSwift Connect, if it is the last opened job, the job does not automatically open on screen after restarting PlanSwift.
 - Workaround: Users can open the Job manually. (Will be fixed in future release)
- Deleted Pages Recycle Bin Folder is not clearing itself periodically. Deleted Pages are stored in a folder called Recycle Bin that should clear periodically to free up space on the user's hard drive.
 - Workaround: Users can clear/empty the Recycle Bin manually. (Will be fixed in future release)