

General Contractor Starter Pack

User Guide

UPDATED ON 11/21/2018

PlanSwift

Authored by: Dave Hansen



Table of Contents

Overview	4
Purchasing and Installation.....	5
Purchasing Plugins	5
Installation and Uninstallation.....	5
Features	5
How To	7
How to: Copy and Paste an Assembly.....	7
How to: Copy and Paste Parts.....	12
How to: Drag and Drop Parts	17
FAQ.....	19
Compendium.....	20
General Contractor – 01 General Requirements	20
General Contractor – 02 Existing Conditions	21
General Contractor – 03 Concrete.....	22
General Contractor – 04 Masonry	24
General Contractor – 05 Metals	25
General Contractor – 06 Wood, Plastics, and Composites	27
General Contractor – 07 Thermal and Moisture Protection.....	30
General Contractor – 08 Openings	33
General Contractor – 09 Finishes.....	34
General Contractor – 10 Specialties	37
General Contractor – 11 Equipment.....	38
General Contractor – 12 Furnishings	39
General Contractor – 13 Special Construction.....	40
General Contractor – 14 Conveying Equipment	40
General Contractor – 21 Fire Suppression.....	41
General Contractor – 22 Plumbing	42
General Contractor – 23 HVAC	43
General Contractor – 25 Integrated Automation	44
General Contractor – 26 Electrical.....	44
General Contractor – 27 Communications	46
General Contractor – 28 Electronic Safety and Security.....	47

General Contractor – 31 Earthwork.....	48
General Contractor – 32 Exterior Improvements	49
General Contractor – 33 Utilities	51
General Contractor – Integrated Advanced Assemblies.....	52

Overview

This guide will assist you in properly using the tools and features found within the General Contractor Starter Pack. It is designed for use with PlanSwift® Takeoff and Estimating Software. This guide is not meant to be a step-by-step “walk through” document, although it can be used as a reference for getting the work done. If you encounter technical difficulty, consult this guide (including the [FAQ](#) section of this user manual) or contact the Technical Support Department at:

PlanSwift® Technical Support
support@PlanSwift.com
1-888-752-6794 Ext. 2

PlanSwift also offers additional training. For training options, contact the Training Department at:

PlanSwift® Training Department
training@PlanSwift.com
1-888-752-6794 Ext. 4

Purchasing and Installation

Purchasing Plugins

If you need to purchase PlanSwift or a plugin product, contact the Sales Department at:

PlanSwift® Sales
sales@PlanSwift.com
1-888-752-6794 Ext. 1

Installation and Uninstallation

Installing and uninstalling starter packs is simple. For installing them, click on the Import Plugin Package icon (arrow 1 in Figure 1) from the PlanSwift Main Ribbon-bar **Plugin** tab (arrow 3 of Figure 1) and follow the prompts from there. For uninstalling, click on the Uninstall Plugin (arrow 2 in Figure 1) and follow those prompts.

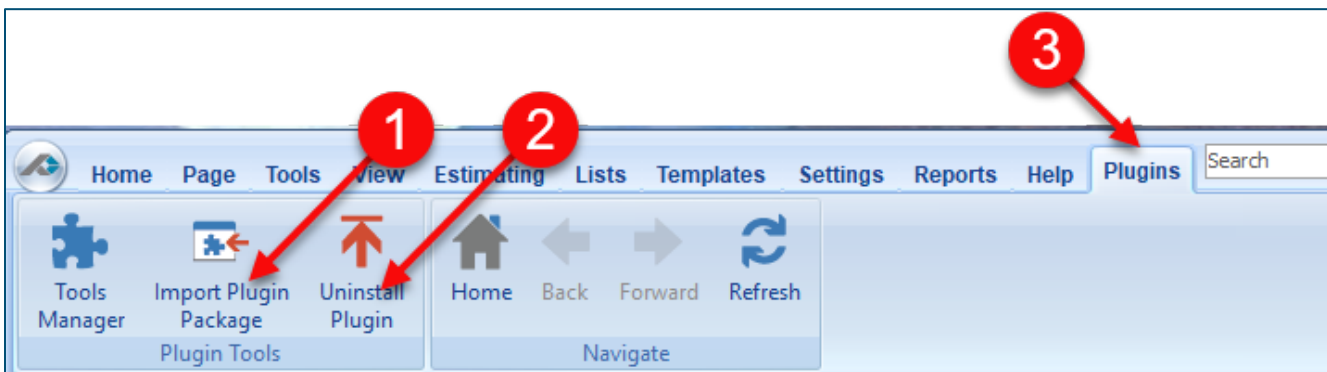


Figure 1

Features

The General Contractor Starter Pack includes the following general categories:

- [01 General Requirements](#)
- [02 Existing Conditions](#)
- [03 Concrete](#)
- [04 Masonry](#)

[05 Metals](#)
[06 Wood, Plastics, and Composites](#)
[07 Thermal and Moisture Protection](#)
[08 Openings](#)
[09 Finishes](#)
[10 Specialties](#)
[11 Equipment](#)
[12 Furnishings](#)
[13 Special Construction](#)
[14 Conveying Equipment](#)
[21 Fire Suppression](#)
[22 Plumbing](#)
[23 HVAC](#)
[25 Integrated Automation](#)
[26 Electrical](#)
[27 Communications](#)
[28 Electronic Safety and Security](#)
[31 Earthwork](#)
[32 Exterior Improvements](#)
[33 Utilities](#)
[Integrated Advanced Assemblies](#)

These are listed in the Templates tab of PlanSwift. The parts and assemblies are also listed in the [Compendium](#) at the end of this guide. With these General Contractor assemblies and parts, PlanSwift users can easily customize assemblies and parts for later use. Starter Packs contain a large library of prebuilt templates, parts and assemblies. Modifying the library of parts and assemblies for any Starter Pack allows users the ability to customize their Templates to their specific needs. Users will save countless hours of setup by utilizing a Starter Pack as their starting point for building custom parts and assemblies. The instructions below will guide new users through the basics of modifying parts and assemblies. We highly recommend purchasing a training package for accelerated learning and faster customization.

How To

How to: Copy and Paste an Assembly

The purpose of copying and pasting an assembly is to allow the user to copy and then modify the assembly for later use. As an example, you may want two different assemblies: one might include a part, and another might have an alternative part or not include that part at all. By copying one assembly and then modifying and renaming the copy (for easy identification), you can have two different assemblies available, allowing for easier and faster takeoffs. Figure 2 shows the **Templates Tab** (arrow 1) and the **Area Takeoff Item Example 1** assembly (arrow 2). If you want to add another assembly but with no **Material 3**, then you would click on the assembly you want to copy (arrow 2), click on **Copy** (arrow 3), and then click on **Paste** (arrow 4).

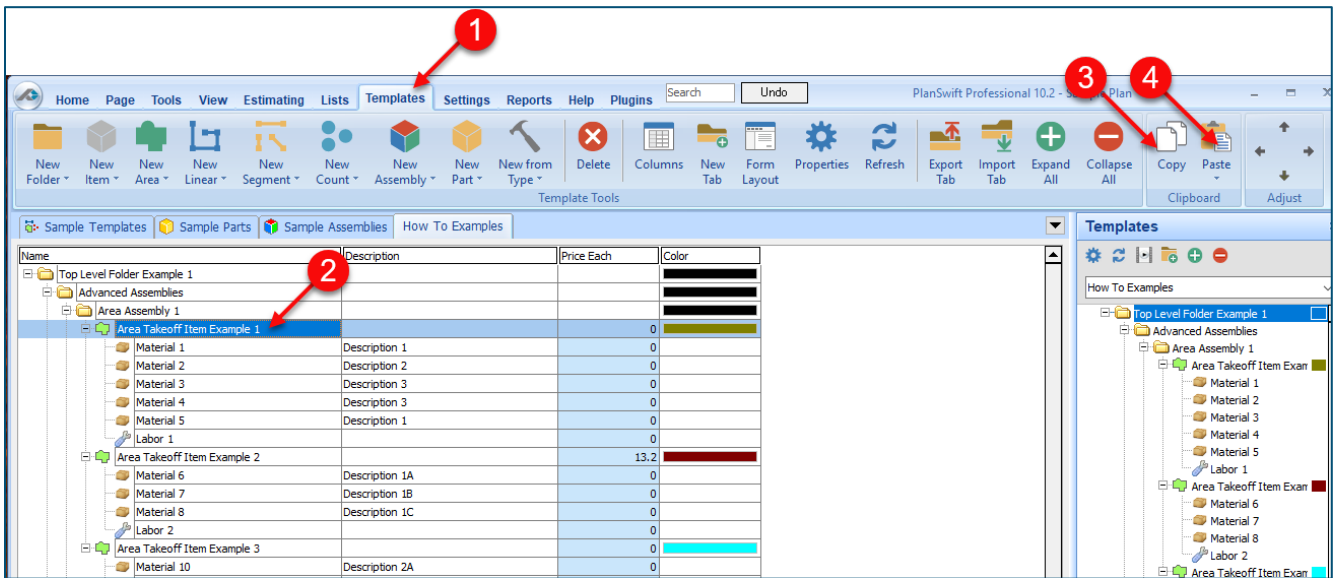


Figure 2

Figure 3 shows the original (arrows 1) and new **Area Takeoff Item Example 1** assembly (arrow 2). To delete the **Material 3** (arrow 3) from the newly created **Area Takeoff Item Example 1** assembly (arrow 2), click on **Material 3** (arrow 3), click on **Delete** (arrow 4), and click on **OK** in the popup window to confirm the deletion.

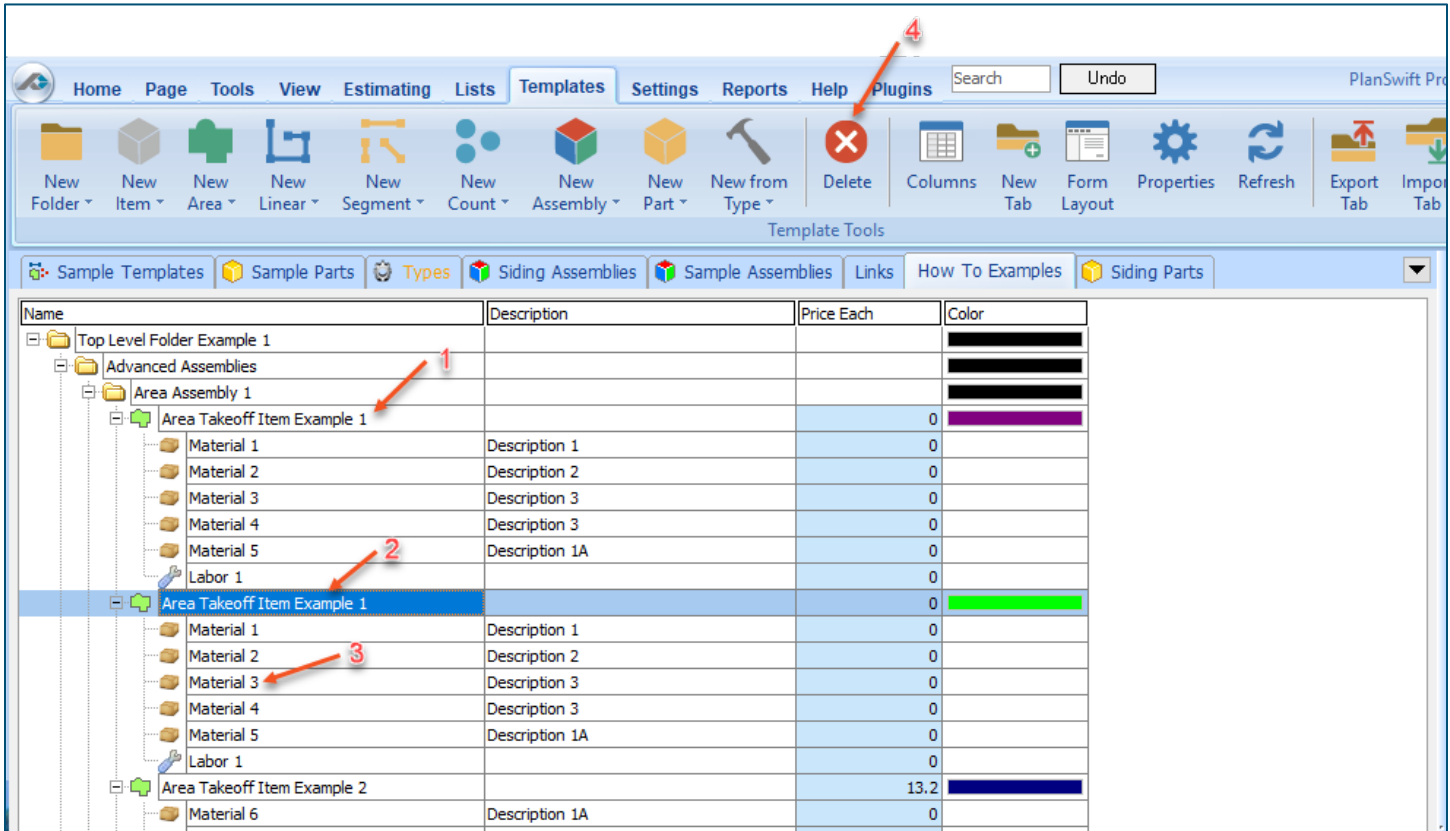


Figure 3

Figure 4 now shows the two assemblies, one with (arrow 1) and one without (arrow 2) the **Material 3** item. You can now change the description of the duplicated **Area Takeoff Item Example 1** (arrow 3) without the **Material 3** item by double-clicking the duplicate **Area Takeoff Item Example 1** (arrow 3).

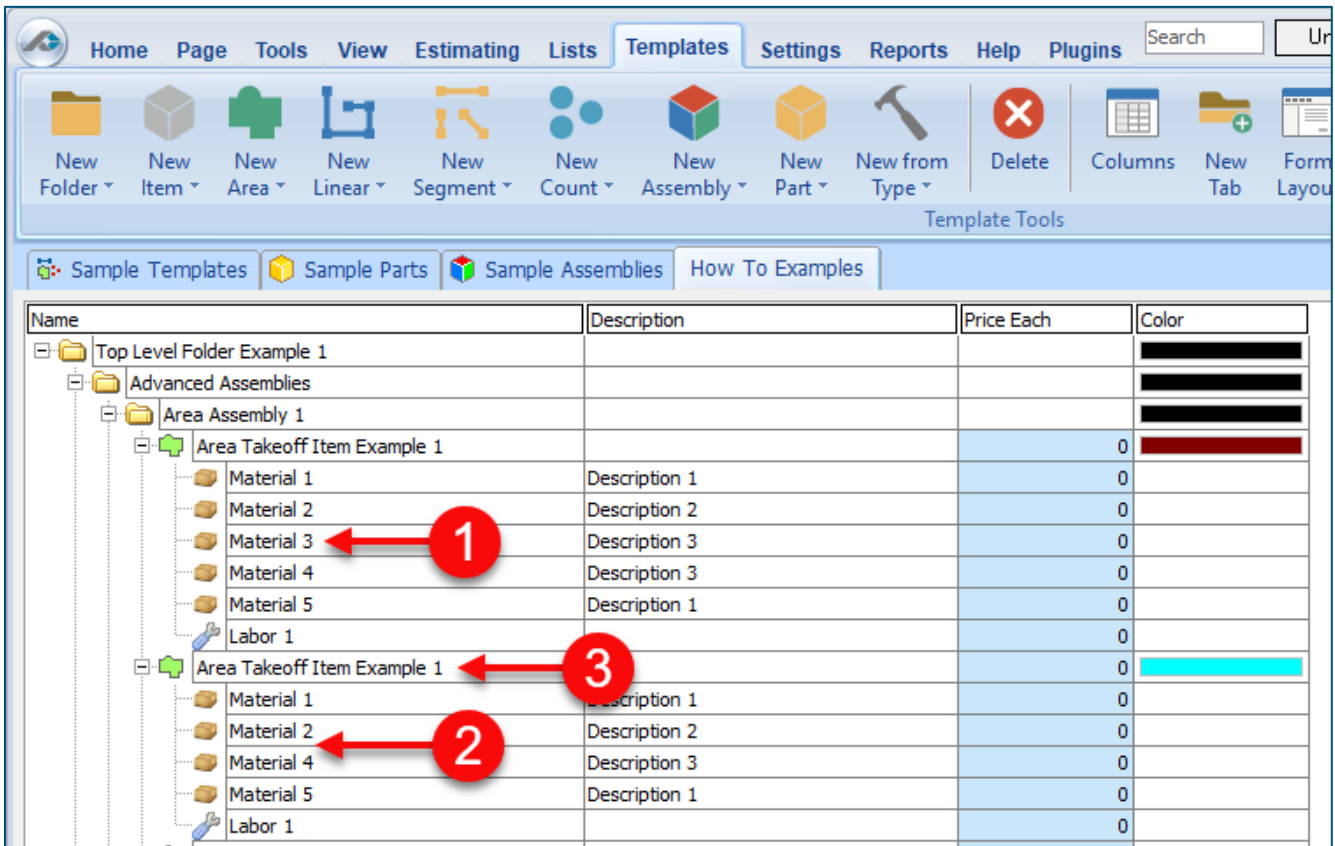


Figure 4

This opens the **Properties – [Area Takeoff Item Example 1]** window (Figure 5) where you can change the assembly’s name to something like **Area Takeoff Item Example 1—No Material 3** to make it easier to identify.

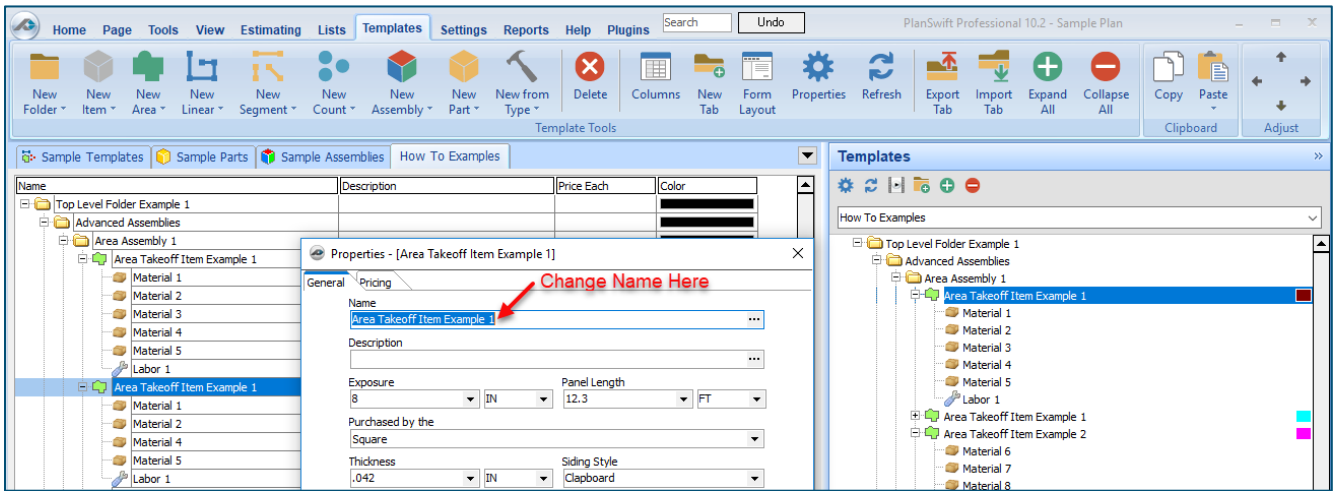


Figure 5

Click on **Ok** in the **Properties** window after you have entered the name. Figure 6 shows the new name.

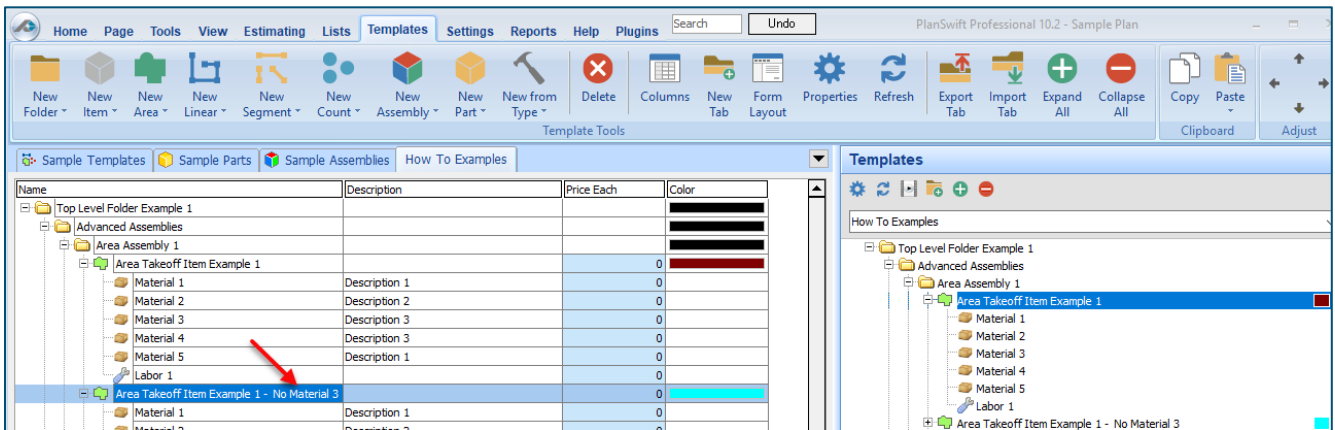


Figure 6

To perform a takeoff with the **Area Takeoff Item Example 1—No Material 3** assembly, go to the takeoff page, click on the green **Record Button** (see the arrow in Figure 7) in the **Templates** sidebar window, and then proceed to do your takeoff.

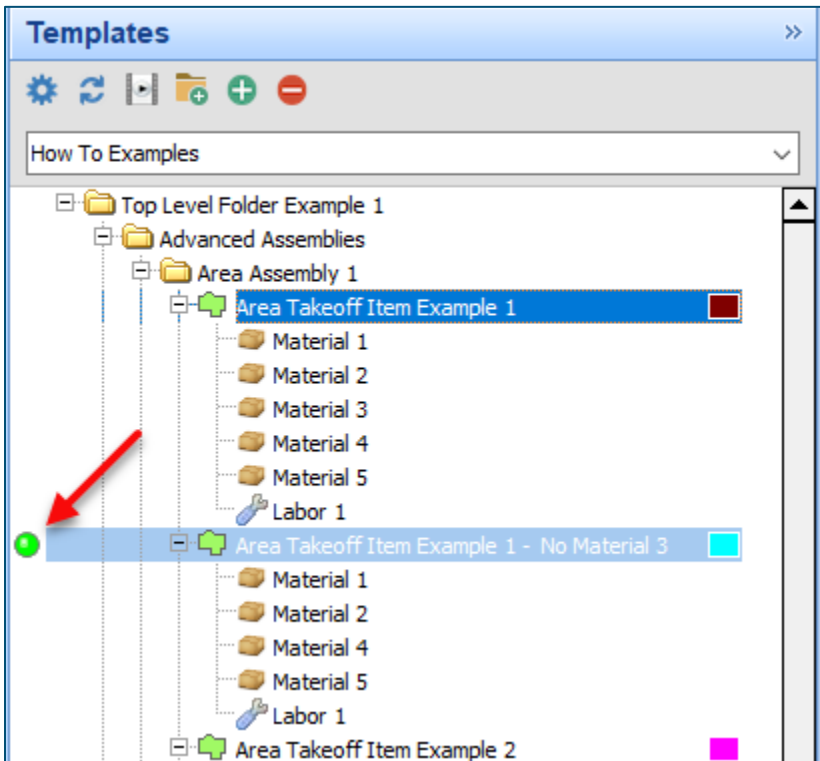


Figure 7

Disclaimer

Any modifications that a user makes to a Starter Pack should always be tested and verified by that user to ensure quantities and calculations are accurate. PlanSwift cannot verify the accuracy of modifications made to templates, parts and assemblies by the user.

How to: Copy and Paste Parts

Copying and pasting parts is handled similarly to copying and pasting an assembly. If, for instance, you want to move **Material 6** in **Area Takeoff Item Example 2** to **Area Takeoff Item Example 1**, click on **Material 6** (arrow 1), then click on copy (arrow 2) as shown in Figure 8.

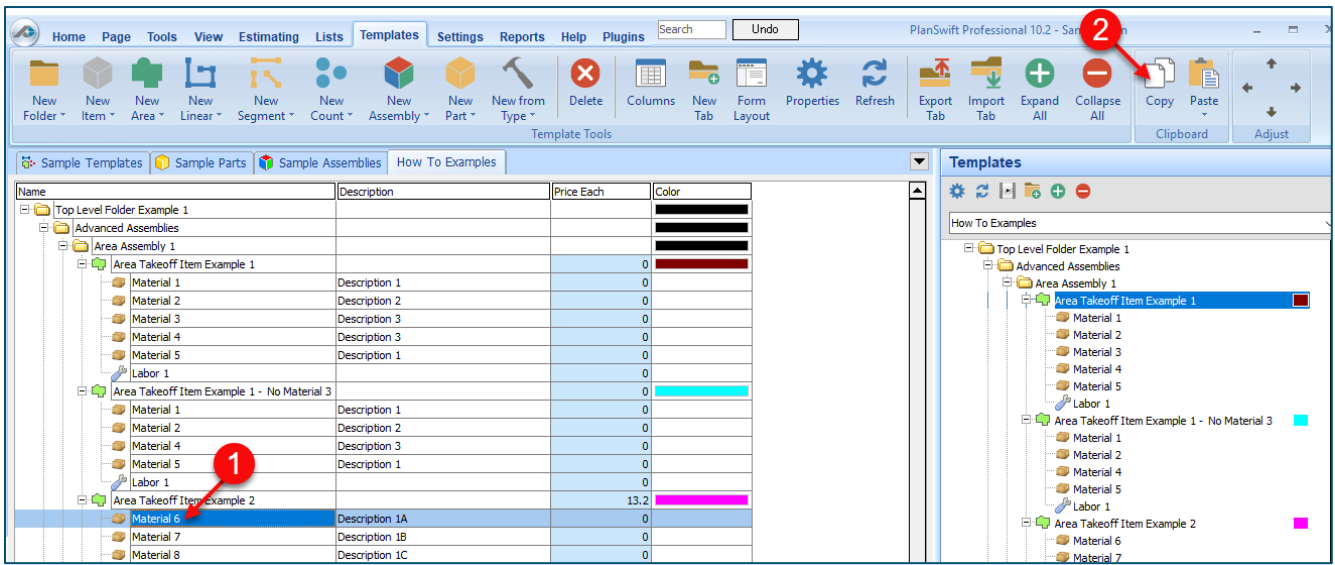


Figure 8

There are now two ways to paste the part. The first is to paste it at the same hierarchical level of a selected item, and the second is to paste it as a sub-item of a selected item. Figure 9 shows the **Paste** button. Clicking on the top half of the button pastes the part at the same hierarchical level of a selected item. Clicking on the drop-down half of the button, then selecting **As Sub-Item** pastes the part as a sub-item of the selected item.

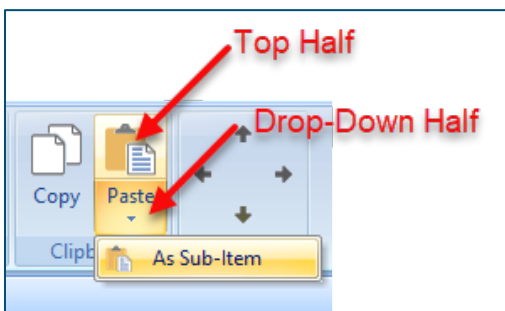


Figure 9

Click on **Area Takeoff Item Example 1**, then click on the top half of **Paste**. As shown in Figure 10, **Material 6** gets pasted at the same hierarchical level as **Area Takeoff Item Example 1**.

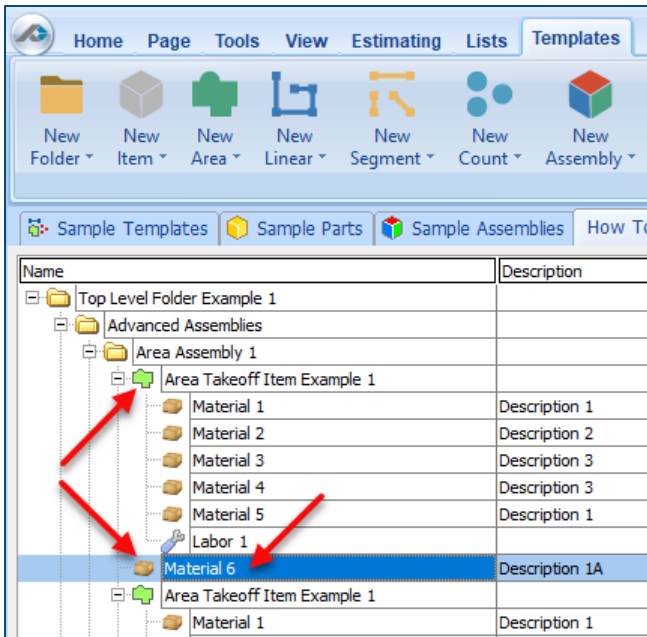


Figure 10

If you had selected the drop-down half of the **Paste** button, then **Material 6** would be a sub-item of **Area Takeoff Item Example 1**. Figure 11 shows **Material 6** as a sub-item.

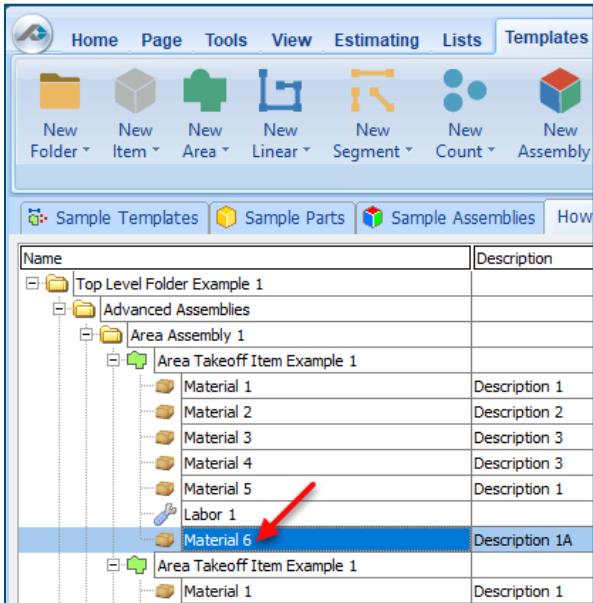


Figure 11

Another way to adjust the hierarchy of an item, such as **Material 6**, is to use the Main Ribbon bar arrow **Adjust** keys (Figure 12).

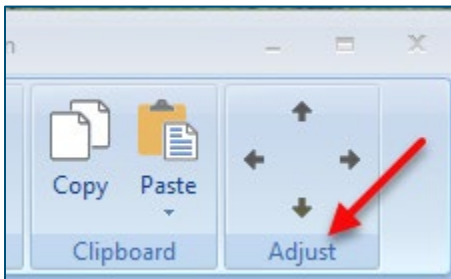


Figure 12

The left and right **Adjust** arrows move the item left and right (up or down) in the hierarchy, and the up and down **Adjust** arrows keys moves the item higher and lower in the list of items.

A shortcut to the **Copy** and **Paste** and **Paste as Sub-Item** selections is available with a right-click menu. Figure 13 shows the **Copy**, **Paste**, and **Paste As Sub-Item** options on the right-click menu when **Material 6** is right-clicked on.

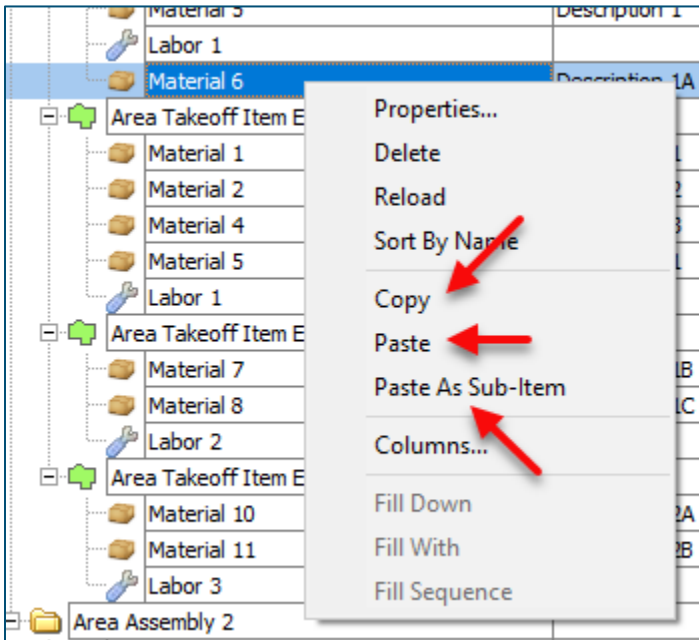


Figure 13

Double-clicking on **Material 6** allows you to change the name of the item and alter other properties of the item (Figure 14). To change the name of **Material 6**, double-click on the **Material 6** name, type the new name, and click on **Ok**.

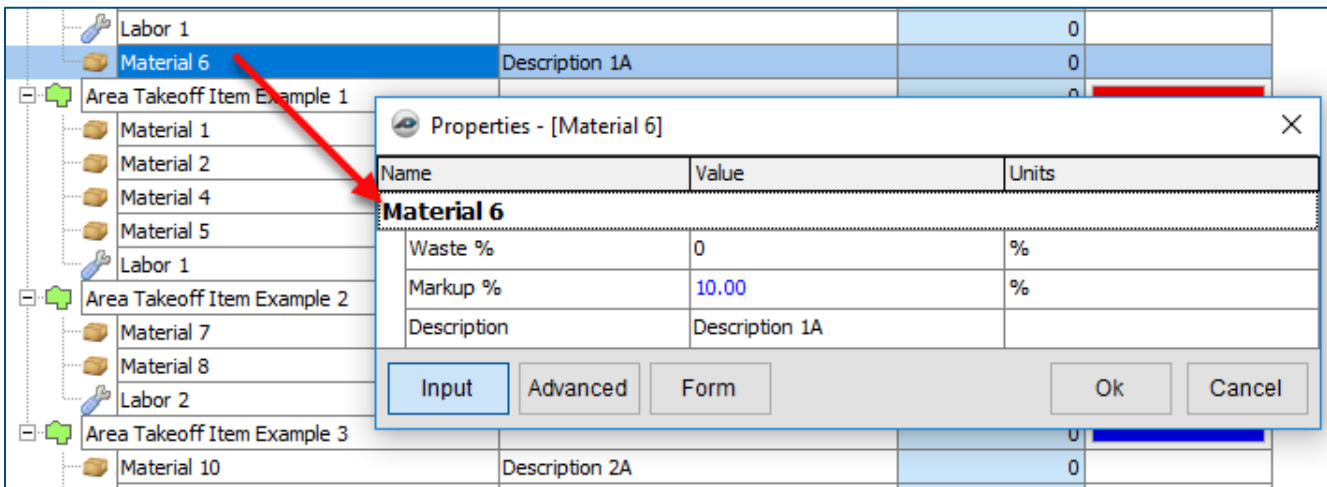


Figure 14

Figure 15 shows **Material 6** renamed to **Material 6A**.

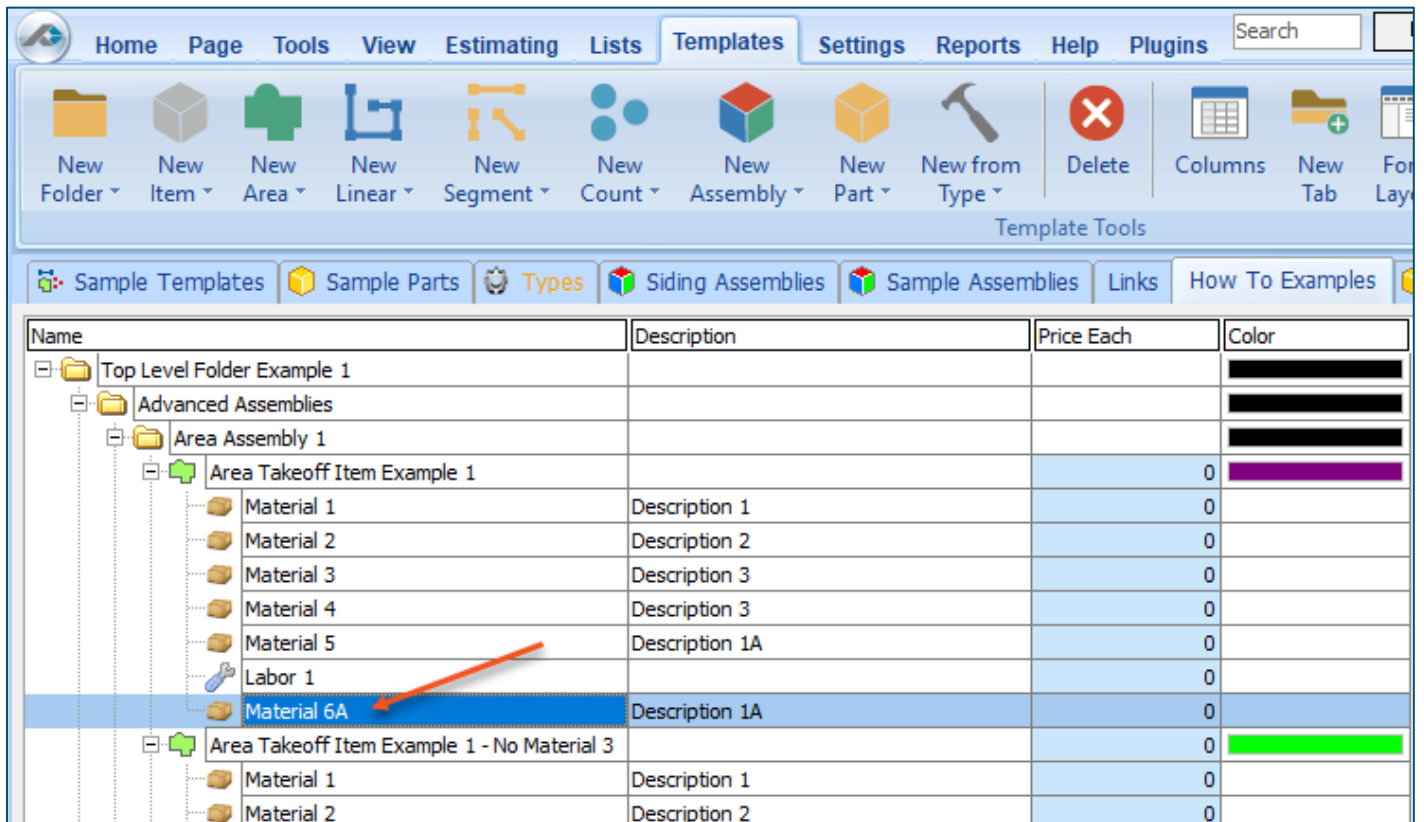


Figure 15

Disclaimer

Any modifications that a user makes to a Starter Pack should always be tested and verified by that user to ensure quantities and calculations are accurate. PlanSwift cannot verify the accuracy of modifications made to templates, parts and assemblies by the user.

How to: Drag and Drop Parts

Parts may be dragged and dropped from one assembly to another assembly. If, for instance, you want to drag the **Material 8** item from **Area Takeoff Item Example 2** up to **Area Takeoff Item Example 1**, click on **Material 8** and drag it up to just below **Material 6A** (see Figure 16) and release the mouse button.

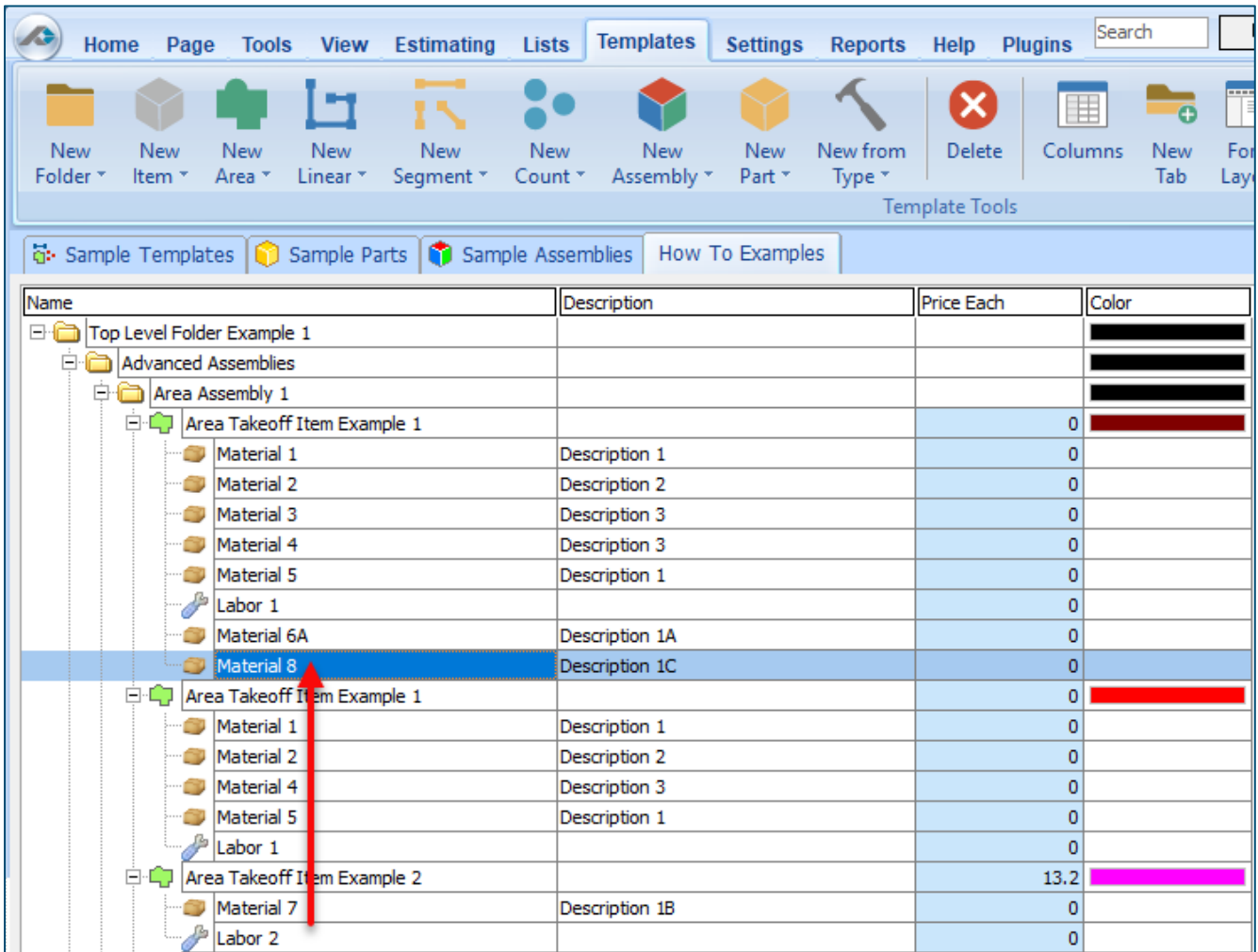


Figure 16

Notice that dragging the part this way *moves* the part from the **Example 2** assembly to the **Example 1** assembly, *not* leaving behind a copy.

The **Templates** sidebar window is a summarized view of everything in the Templates Tab. It is designed for easily dragging and dropping parts and for quickly launching takeoff templates and assemblies.

Parts may be dragged over from the **Templates** sidebar window into the **Templates Tab** window; note that dragging any part from the **Templates** sidebar window makes a copy of it. If, for instance, you want a **Material 7** item added to **Area Takeoff Item Example 1** as a sub-item, simply drag the **Material 7** from the right **Templates** sidebar window over on top of **Area Takeoff Item Example 1** label and release the mouse button. (Figure 17).

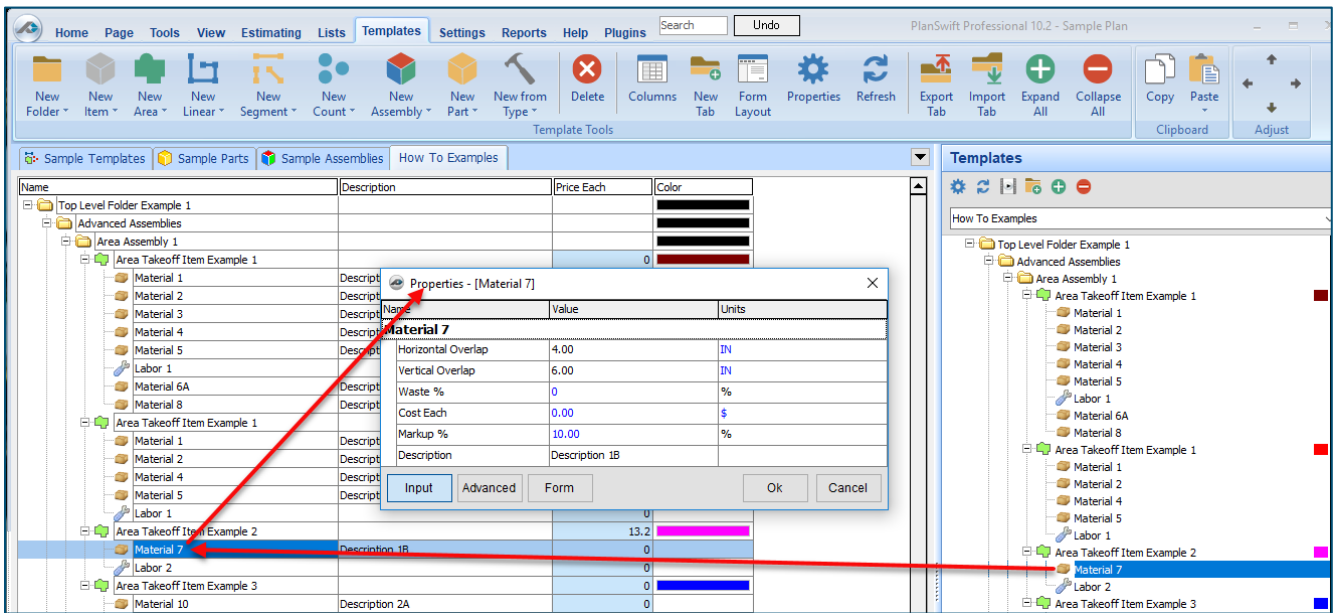


Figure 17

Figure 17 shows the **Material 7** item in place after it was dropped on top of **Area Takeoff Item Example 1**. In addition, the **Properties – [Material 7]** window automatically opens, allowing the user to change any properties for **Material 7**. Click on **Ok** to close the **Properties – [Material 7]** window.

Disclaimer

Any modifications that a user makes to a Starter Pack should always be tested and verified by that user to ensure quantities and calculations are accurate. PlanSwift cannot verify the accuracy of modifications made to templates, parts and assemblies by the user.

FAQ

Question: I've read this user guide, and I still have questions. What do I do?

Answer: PlanSwift recommends that you purchase a training package. We highly recommend new users purchase a training package, because training is customized to each user. We offer [one-on-one training](#) and [classroom training](#). Contact training@PlanSwift.com or at 1-888-752-6794 Ext. 4.

Question: Does the Starter Pack include everything a contractor will need to generate an estimate?

Answer: No. A Starter Pack is a tool to get you started toward creating a complete estimate. For example, the Starter Pack does not include industry pricing for materials and labor. However, you can supply prices for materials and labor on the assemblies and labor included in the Starter Pack.

Question: Do I have to input all the pricing for all my parts?

Answer: Inputting pricing is optional. You can use the Starter Pack to generate quantities that you can then send to your supplier, who can then provide you current pricing. Inputting pricing on your own is optional. If your industry's pricing is not subject to frequent changes, you may want to consider inputting your pricing in PlanSwift.

Compendium

General Contractor – 01 General Requirements

Name	Description	Division	Type	Color
01 General Requirements			Folder	
Basic Assemblies			Folder	
Cleaning and Waste Management		01 00 00 General Requirements	Area	
Material	Cleaning and Waste Management	01 00 00 General Requirements	Material	
Labor	Cleaning and Waste Management	01 00 00 General Requirements	Labor	
Vehicle Access and Parking		01 00 00 General Requirements	Area	
Material	Vehicle Access and Parking	01 00 00 General Requirements	Material	
Labor	Vehicle Access and Parking	01 00 00 General Requirements	Labor	
Temporary Fencing		01 00 00 General Requirements	Linear	
Material	Temporary Fencing	01 00 00 General Requirements	Material	
Labor	Temporary Fencing	01 00 00 General Requirements	Labor	
Field Office		01 00 00 General Requirements	Count	
Material	Field Office	01 00 00 General Requirements	Material	
Labor	Field Office	01 00 00 General Requirements	Labor	
Advanced Assemblies			Folder	
Temporary Fencing		01 00 00 General Requirements	Linear	
6' x 50' Chain Link	50 Ft Roll	01 00 00 General Requirements	Material	
8 ft. 16-Gauge Fence Post	6' O.C. Spacing	01 00 00 General Requirements	Material	
Fence Installation	Priced per FT	01 00 00 General Requirements	Labor	
Field Office		01 00 00 General Requirements	Count	
10' x 50' Mobile Office Rental	Rental for 1 Time Period	01 00 00 General Requirements	Equipment	
Field Office Setup	Priced EA	01 00 00 General Requirements	Labor	
Lump Sum Costs (Drag and Drop)			Folder	
Permits		01 00 00 General Requirements	Other	
Geotechnical Engineering		01 00 00 General Requirements	Other	
Cleaning and Waste Management		01 00 00 General Requirements	Other	
Vehicle Access and Parking		01 00 00 General Requirements	Other	
Summary of Work		01 00 00 General Requirements	Other	
Project Management and Coordination		01 00 00 General Requirements	Other	
Structural Engineering		01 00 00 General Requirements	Other	
Insurance		01 00 00 General Requirements	Other	
Civil Engineering		01 00 00 General Requirements	Other	
Allowances		01 00 00 General Requirements	Other	
Construction Aids		01 00 00 General Requirements	Other	
Quality Control		01 00 00 General Requirements	Other	
Mechanical Engineering		01 00 00 General Requirements	Other	
Electrical Engineering		01 00 00 General Requirements	Other	
Bidding Expense		01 00 00 General Requirements	Other	
Temporary Utilities		01 00 00 General Requirements	Other	
Product Storage and Handling Requirements		01 00 00 General Requirements	Other	
Regulatory Requirements		01 00 00 General Requirements	Other	
Dumpster		01 00 00 General Requirements	Equipment	
Mobile Office		01 00 00 General Requirements	Equipment	
Site Utilities		01 00 00 General Requirements	Equipment	
Generator		01 00 00 General Requirements	Equipment	
Air Compressor		01 00 00 General Requirements	Equipment	
Labor		01 00 00 General Requirements	Labor	

General Contractor – 02 Existing Conditions

Name	Description	Division	Type	Color
02 Existing Conditions			Folder	Black
Basic Assemblies			Folder	Black
Demolition		02 00 00 Existing Conditions	Area	Red
Material	Demolition	02 00 00 Existing Conditions	Material	
Labor	Demolition	02 00 00 Existing Conditions	Labor	
Termite Treatment		02 00 00 Existing Conditions	Area	Cyan
Material	Termite Treatment	02 00 00 Existing Conditions	Material	
Labor	Termite Treatment	02 00 00 Existing Conditions	Labor	
Erosion Control		02 00 00 Existing Conditions	Linear	Magenta
Material	Erosion Control	02 00 00 Existing Conditions	Material	
Labor	Erosion Control	02 00 00 Existing Conditions	Labor	
Concrete Cutting		02 00 00 Existing Conditions	Segment	Blue
Material	Concrete Cutting	02 00 00 Existing Conditions	Material	
Labor	Concrete Cutting	02 00 00 Existing Conditions	Labor	
Foundation Drains		02 00 00 Existing Conditions	Segment	Yellow
Material	Foundation Drains	02 00 00 Existing Conditions	Material	
Labor	Foundation Drains	02 00 00 Existing Conditions	Labor	
Advanced Assemblies			Folder	Black
Floor and Ceiling Demolition		02 00 00 Existing Conditions	Area	Olive Green
Material Removal	15 LBS/SQFT	02 00 00 Existing Conditions	Material	
Demolition	Priced per SQ FT	02 00 00 Existing Conditions	Labor	
Wall Demo		02 00 00 Existing Conditions	Linear	Green
Material Removal	15 LBS/SQFT	02 00 00 Existing Conditions	Material	
Demolition	Priced per SQ FT	02 00 00 Existing Conditions	Labor	
Lump Sum Costs			Folder	Black
Demolition		02 00 00 Existing Conditions	Subcontract	
Site Prep		02 00 00 Existing Conditions	Subcontract	
Soil Testing		02 00 00 Existing Conditions	Subcontract	
Site Inspection		02 00 00 Existing Conditions	Subcontract	
Dumpster		02 00 00 Existing Conditions	Equipment	
Front End Loader		02 00 00 Existing Conditions	Equipment	
Dump Truck		02 00 00 Existing Conditions	Equipment	
Back Hoe		02 00 00 Existing Conditions	Equipment	
Labor		02 00 00 Existing Conditions	Labor	
Allowance		02 00 00 Existing Conditions	Other	

General Contractor – 03 Concrete

Name	Description	Division	Type	Color
03 Concrete			Folder	
Basic Assemblies			Folder	
Slab on Grade		03 00 00 Concrete	Area	
Material	Slab on Grade	03 00 00 Concrete	Material	
Labor	Slab on Grade	03 00 00 Concrete	Labor	
Suspended Slab		03 00 00 Concrete	Area	
Material	Suspended Slab	03 00 00 Concrete	Material	
Labor	Suspended Slab	03 00 00 Concrete	Labor	
Concrete Flatwork		03 00 00 Concrete	Area	
Material	Concrete Flatwork	03 00 00 Concrete	Material	
Labor	Concrete Flatwork	03 00 00 Concrete	Labor	
Sidewalk		03 00 00 Concrete	Linear	
Material	Sidewalk	03 00 00 Concrete	Material	
Labor	Sidewalk	03 00 00 Concrete	Labor	
Continuous Footing		03 00 00 Concrete	Linear	
Material	Continuous Footing	03 00 00 Concrete	Material	
Labor	Continuous Footing	03 00 00 Concrete	Labor	
Grade Beam		03 00 00 Concrete	Linear	
Material	Grade Beam	03 00 00 Concrete	Material	
Labor	Grade Beam	03 00 00 Concrete	Labor	
Foundation Wall		03 00 00 Concrete	Linear	
Material	Foundation Wall	03 00 00 Concrete	Material	
Labor	Foundation Wall	03 00 00 Concrete	Labor	
Spot Footing		03 00 00 Concrete	Count	
Material	Spot Footing	03 00 00 Concrete	Material	
Labor	Spot Footing	03 00 00 Concrete	Labor	
Concrete Column		03 00 00 Concrete	Count	
Material	Concrete Column	03 00 00 Concrete	Material	
Labor	Concrete Column	03 00 00 Concrete	Labor	
Concrete Pier		03 00 00 Concrete	Count	
Material	Concrete Pier	03 00 00 Concrete	Material	
Labor	Concrete Pier	03 00 00 Concrete	Labor	

General Contractor – 03 Concrete -- Continued

Name	Description	Division	Type	Color
Advanced Assemblies			Folder	Black
SOG w/ Rebar		03 00 00 Concrete	Area	Yellow
Concrete	4" Thick 4000 PSI	03 00 00 Concrete	Material	
#4 Rebar	#4 Rebar, 0.668 LBS/FT	03 00 00 Concrete	Material	
1" Gravel	4" Thick, Weight 3800 LBS/CUYD	03 00 00 Concrete	Material	
15 mil Vapor Barrier	20' x 100' Roll	03 00 00 Concrete	Material	
Concrete Labor	Priced per SQ FT	03 00 00 Concrete	Labor	
SOG w/ Welded Wire		03 00 00 Concrete	Area	Green
Concrete	4" Thick 4000 PSI	03 00 00 Concrete	Material	
6x6 10ga 5'x150' Welded Wire	Coverage = 750 SQ FT/EA	03 00 00 Concrete	Material	
1" Gravel	4" Thick, Weight 3800 LBS/CUYD	03 00 00 Concrete	Material	
15 mil Vapor Barrier	20' x 100' Roll	03 00 00 Concrete	Material	
Concrete Labor	Priced per SQ FT	03 00 00 Concrete	Labor	
SOG		03 00 00 Concrete	Area	Red
Concrete	4" Thick 4000 PSI	03 00 00 Concrete	Material	
1" Gravel	4" Thick, Weight 3800 LBS/CUYD	03 00 00 Concrete	Material	
15 mil Vapor Barrier	20' x 100' Roll	03 00 00 Concrete	Material	
Concrete Labor	Priced per SQ FT	03 00 00 Concrete	Labor	
Continuous Footing		03 00 00 Concrete	Linear	Teal
Concrete	4000 PSI, 36" W x 24" D	03 00 00 Concrete	Material	
#4 Rebar	Horiz. #4 Rebar, 0.668 LBS/FT	03 00 00 Concrete	Material	
#4 Rebar	Vert. #4 Rebar, 0.668 LBS/FT	03 00 00 Concrete	Material	
Concrete Labor	Priced per FT	03 00 00 Concrete	Labor	
Grade Beam		03 00 00 Concrete	Linear	Purple
Concrete	4000 PSI, 16" W x 24" D	03 00 00 Concrete	Material	
#4 Rebar	#4 Rebar, 0.668 LBS/FT	03 00 00 Concrete	Material	
#4 Rebar	#4 Rebar, 0.668 LBS/FT	03 00 00 Concrete	Material	
#4 - 10" x 12" Rebar Stirrup	12" O.C. Spacing, 0 per Row	03 00 00 Concrete	Material	
Concrete Labor (priced per FT)	Priced per FT	03 00 00 Concrete	Labor	
Foundation Wall		03 00 00 Concrete	Linear	Blue
Concrete	4000 PSI, 8" W x 8" H	03 00 00 Concrete	Material	
#4 Rebar	Horiz. #4 Rebar, 12" O.C., 0.668 LBS/FT,	03 00 00 Concrete	Material	
#4 Rebar	8' Vertical #4 Rebar, 12" O.C., 0.668 LBS/FT	03 00 00 Concrete	Material	
Concrete Labor	Priced per Sq Ft	03 00 00 Concrete	Labor	
Spot Footing		03 00 00 Concrete	Count	Olive
Concrete	4000 PSI	03 00 00 Concrete	Material	
#4 Rebar	#4 Rebar, 0.668 LBS/FT	03 00 00 Concrete	Material	
Concrete Labor	Priced per SQ FT	03 00 00 Concrete	Labor	
Square Column		03 00 00 Concrete	Count	Green
Concrete	4000 PSI	03 00 00 Concrete	Material	
#4 Rebar	#4 Rebar, 0.668 LBS/FT	03 00 00 Concrete	Material	
#4 - 6" x 12" Rebar Stirrup	12" O.C. Spacing, 1 per Row	03 00 00 Concrete	Material	
Concrete Labor	Priced EA	03 00 00 Concrete	Labor	
Lump Sum Costs			Folder	Black
Concrete		03 00 00 Concrete	Subcontract	
Concrete Testing		03 00 00 Concrete	Subcontract	
Back Hoe		03 00 00 Concrete	Equipment	
Track Hoe		03 00 00 Concrete	Equipment	
Skid Steer		03 00 00 Concrete	Equipment	
Pump Truck		03 00 00 Concrete	Equipment	
Labor		03 00 00 Concrete	Labor	
Allowance		03 00 00 Concrete	Other	

General Contractor – 04 Masonry

Name	Description	Division	Type	Color
04 Masonry			Folder	
Basic Assemblies			Folder	
CMU Block		04 00 00 Masonry	Area	
Material	CMU Block	04 00 00 Masonry	Material	
Labor	CMU Block	04 00 00 Masonry	Labor	
Brick		04 00 00 Masonry	Area	
Material	Brick	04 00 00 Masonry	Material	
Labor	Brick	04 00 00 Masonry	Labor	
Stone		04 00 00 Masonry	Area	
Material	Stone	04 00 00 Masonry	Material	
Labor	Stone	04 00 00 Masonry	Labor	
Masonry Glass Block		04 00 00 Masonry	Area	
Material	Masonry Glass Block	04 00 00 Masonry	Material	
Labor	Masonry Glass Block	04 00 00 Masonry	Labor	
Brick Wall		04 00 00 Masonry	Linear	
Material	Brick Wall	04 00 00 Masonry	Material	
Labor	Brick Wall	04 00 00 Masonry	Labor	
CMU Block Wall		04 00 00 Masonry	Linear	
Material	CMU Block Wall	04 00 00 Masonry	Material	
Labor	CMU Block Wall	04 00 00 Masonry	Labor	
Precast Sill		04 00 00 Masonry	Segment	
Material	Precast Sill	04 00 00 Masonry	Material	
Labor	Precast Sill	04 00 00 Masonry	Labor	
Cast Stone		04 00 00 Masonry	Segment	
Material	Cast Stone	04 00 00 Masonry	Material	
Labor	Cast Stone	04 00 00 Masonry	Labor	
Advanced Assemblies			Folder	
Exterior Brick		04 00 00 Masonry	Area	
2.62" x 8" Brick		04 00 00 Masonry	Material	
Sand	1000 Bricks/Ton	04 00 00 Masonry	Material	
Mortar	140 Bricks/Bag	04 00 00 Masonry	Material	
Brick Labor	Price per SQ FT	04 00 00 Masonry	Labor	
Brick Wall		04 00 00 Masonry	Linear	
2.62" x 8" Brick		04 00 00 Masonry	Material	
Sand	1000 Bricks/Ton	04 00 00 Masonry	Material	
Mortar	140 Bricks/Bag	04 00 00 Masonry	Material	
Brick Labor	Price per SQ FT	04 00 00 Masonry	Labor	
Exterior Block		04 00 00 Masonry	Area	
8" x 16" CMU Block		04 00 00 Masonry	Material	
Sand	200 Blocks/Ton	04 00 00 Masonry	Material	
Mortar	33 Blocks/Bag	04 00 00 Masonry	Material	
#4 Rebar	28" O.C. Spacing, #4 Rebar, 0.668 LBS/FT	04 00 00 Masonry	Material	
Block Labor	20 Blocks/Hour/Worker, 4 Workers	04 00 00 Masonry	Labor	
Block Wall		04 00 00 Masonry	Linear	
8" x 16" CMU Block		04 00 00 Masonry	Material	
Sand	200 Blocks/Ton	04 00 00 Masonry	Material	
Mortar	33 Blocks/Bag	04 00 00 Masonry	Material	
#4 Rebar	28" O.C. Spacing, #4 Rebar, 0.668 LBS/FT	04 00 00 Masonry	Material	
Block Labor	20 Blocks/Hour/Worker, 4 Workers	04 00 00 Masonry	Labor	
Lump Sum Costs			Folder	
Stone		04 00 00 Masonry	Subcontract	
Block		04 00 00 Masonry	Subcontract	
Brick		04 00 00 Masonry	Subcontract	
Masonry Testing		04 00 00 Masonry	Subcontract	
Scaffolding		04 00 00 Masonry	Equipment	
Mixer		04 00 00 Masonry	Equipment	
Forklift		04 00 00 Masonry	Equipment	
Scissor Lift		04 00 00 Masonry	Equipment	
Labor		04 00 00 Masonry	Labor	
Allowance		04 00 00 Masonry	Other	

General Contractor – 05 Metals

Name	Description	Division	Type	Color
05 Metals			Folder	
Basic Assemblies			Folder	
Metal Decking		05 00 00 Metals	Area	
Material	Metal Decking	05 00 00 Metals	Material	
Labor	Metal Decking	05 00 00 Metals	Labor	
Steel Erection		05 00 00 Metals	Area	
Material	Steel Erection	05 00 00 Metals	Material	
Labor	Steel Erection	05 00 00 Metals	Labor	
Metal Framing		05 00 00 Metals	Area	
Material	Metal Framing	05 00 00 Metals	Material	
Labor	Metal Framing	05 00 00 Metals	Labor	
Metal Stairs		05 00 00 Metals	Area	
Material	Metal Stairs	05 00 00 Metals	Material	
Labor	Metal Stairs	05 00 00 Metals	Labor	
Metal Joists		05 00 00 Metals	Area	
Material	Metal Joists	05 00 00 Metals	Material	
Labor	Metal Joists	05 00 00 Metals	Labor	
Ornamental Metals		05 00 00 Metals	Area	
Material	Ornamental Metals	05 00 00 Metals	Material	
Labor	Ornamental Metals	05 00 00 Metals	Labor	
Metal Framed Wall		05 00 00 Metals	Linear	
Material	Metal Framed Wall	05 00 00 Metals	Material	
Labor	Metal Framed Wall	05 00 00 Metals	Labor	
Metal Joists		05 00 00 Metals	Segment	
Material	Metal Joists	05 00 00 Metals	Material	
Labor	Metal Joists	05 00 00 Metals	Labor	
Wall Furring		05 00 00 Metals	Segment	
Material	Wall Furring	05 00 00 Metals	Material	
Labor	Wall Furring	05 00 00 Metals	Labor	
Metal Beams		05 00 00 Metals	Segment	
Material	Metal Beams	05 00 00 Metals	Material	
Labor	Metal Beams	05 00 00 Metals	Labor	
Metal Railing		05 00 00 Metals	Segment	
Material	Metal Railing	05 00 00 Metals	Material	
Labor	Metal Railing	05 00 00 Metals	Labor	

General Contractor – 05 Metals -- Continued

Name	Description	Division	Type	Color
Advanced Assemblies			Folder	
Dropped Ceiling		05 00 00 Metals	Area	
10' Furring Channel		05 00 00 Metals	Material	
1-1/2" 10' U-Channel		05 00 00 Metals	Material	
3' Hanger Wires		05 00 00 Metals	Material	
Metal Furring Channel Clips / Tie Wire		05 00 00 Metals	Material	
Dropped Ceiling Labor		05 00 00 Metals	Labor	
Metal Decking		05 00 00 Metals	Area	
20 ga. Galv. 3' x 20' Deck		05 00 00 Metals	Material	
Metal Decking Labor		05 00 00 Metals	Labor	
Metal Railing		05 00 00 Metals	Linear	
1-1/2" Round Top Rail		05 00 00 Metals	Material	
1-1/2" Round Interm. Rail		05 00 00 Metals	Material	
1-3/4" x 42" Round Post		05 00 00 Metals	Material	
3/4" x 30" Round Pickets		05 00 00 Metals	Material	
Railing Labor		05 00 00 Metals	Labor	
Metal Stud Wall		05 00 00 Metals	Linear	
10' x 3-5/8" x 20 Ga Stud		05 00 00 Metals	Material	
3-5/8" 20 Ga Track		05 00 00 Metals	Material	
Framing Labor		05 00 00 Metals	Labor	
Wall Furring		05 00 00 Metals	Linear	
7/8" 10' Furring Channel	16" O.C. Spacing	05 00 00 Metals	Material	
Furring Labor		05 00 00 Metals	Labor	
Lump Sum Costs			Folder	
Metal Framing		05 00 00 Metals	Subcontract	
Steel Erection		05 00 00 Metals	Subcontract	
Ornamental Metals		05 00 00 Metals	Subcontract	
Steel Testing		05 00 00 Metals	Subcontract	
Metal Railing		05 00 00 Metals	Subcontract	
Metal Decking		05 00 00 Metals	Subcontract	
Metal Stairs		05 00 00 Metals	Subcontract	
Forklift		05 00 00 Metals	Equipment	
Scissor Lift		05 00 00 Metals	Equipment	
Crane		05 00 00 Metals	Equipment	
Labor		05 00 00 Metals	Labor	
Allowance		05 00 00 Metals	Other	

General Contractor – 06 Wood, Plastics, and Composites

Name	Description	Division	Type	Color
06 Wood, Plastics, and Composites			Folder	
Basic Assemblies			Folder	
Rough Carpentry		06 00 00 Wood, Plastics, and Composites	Area	
Material	Rough Carpentry	06 00 00 Wood, Plastics, and Composites	Material	
Labor	Rough Carpentry	06 00 00 Wood, Plastics, and Composites	Labor	
Finish Carpentry		06 00 00 Wood, Plastics, and Composites	Area	
Material	Finish Carpentry	06 00 00 Wood, Plastics, and Composites	Material	
Labor	Finish Carpentry	06 00 00 Wood, Plastics, and Composites	Labor	
Millwork		06 00 00 Wood, Plastics, and Composites	Area	
Material	Millwork	06 00 00 Wood, Plastics, and Composites	Material	
Labor	Millwork	06 00 00 Wood, Plastics, and Composites	Labor	
Laminate Countertops		06 00 00 Wood, Plastics, and Composites	Area	
Material	Laminate Countertops	06 00 00 Wood, Plastics, and Composites	Material	
Labor	Laminate Countertops	06 00 00 Wood, Plastics, and Composites	Labor	
Base		06 00 00 Wood, Plastics, and Composites	Linear	
Material	Base	06 00 00 Wood, Plastics, and Composites	Material	
Labor	Base	06 00 00 Wood, Plastics, and Composites	Labor	
Crown		06 00 00 Wood, Plastics, and Composites	Linear	
Material	Crown	06 00 00 Wood, Plastics, and Composites	Material	
Labor	Crown	06 00 00 Wood, Plastics, and Composites	Labor	
Marble Window Sills		06 00 00 Wood, Plastics, and Composites	Segment	
Material	Marble Window Sills	06 00 00 Wood, Plastics, and Composites	Material	
Labor	Marble Window Sills	06 00 00 Wood, Plastics, and Composites	Labor	
Base and Crown		06 00 00 Wood, Plastics, and Composites	Linear	
Material	Base and Crown	06 00 00 Wood, Plastics, and Composites	Material	
Labor	Base and Crown	06 00 00 Wood, Plastics, and Composites	Labor	
Shelf and Rod		06 00 00 Wood, Plastics, and Composites	Segment	
Material	Shelf and Rod	06 00 00 Wood, Plastics, and Composites	Material	
Labor	Shelf and Rod	06 00 00 Wood, Plastics, and Composites	Labor	
Railing		06 00 00 Wood, Plastics, and Composites	Segment	
Material	Railing	06 00 00 Wood, Plastics, and Composites	Material	
Labor	Railing	06 00 00 Wood, Plastics, and Composites	Labor	
Door Trim		06 00 00 Wood, Plastics, and Composites	Count	
Material	Door Trim	06 00 00 Wood, Plastics, and Composites	Material	
Labor	Door Trim	06 00 00 Wood, Plastics, and Composites	Labor	
Window Trim		06 00 00 Wood, Plastics, and Composites	Count	
Material	Window Trim	06 00 00 Wood, Plastics, and Composites	Material	
Labor	Window Trim	06 00 00 Wood, Plastics, and Composites	Labor	
Newel Post		06 00 00 Wood, Plastics, and Composites	Count	
Material	Newel Post	06 00 00 Wood, Plastics, and Composites	Material	
Labor	Newel Post	06 00 00 Wood, Plastics, and Composites	Labor	

General Contractor – 06 Wood, Plastics, and Composites -- Continued

Name	Description	Division	Type	Color
Advanced Assemblies			Folder	
Rough Carpentry			Folder	
Subfloor Decking		06 00 00 Wood, Plastics, and Composites	Area	
3/4" 4x8' T&G OSB	Priced per Sheet	06 00 00 Wood, Plastics, and Composites	Material	
Subfloor Nails/Screws	Priced per Box	06 00 00 Wood, Plastics, and Composites	Material	
Subfloor Adhesive	Priced per Tube	06 00 00 Wood, Plastics, and Composites	Material	
Subfloor Labor	Priced per SQ FT	06 00 00 Wood, Plastics, and Composites	Labor	
Subfloor Joist and Decking		06 00 00 Wood, Plastics, and Composites	Joist Tool	
3/4" 4x8' T&G OSB	Priced per Sheet	06 00 00 Wood, Plastics, and Composites	Material	
Subfloor Nails/Screws	Priced per Box	06 00 00 Wood, Plastics, and Composites	Material	
Subfloor Adhesive	Priced per Tube	06 00 00 Wood, Plastics, and Composites	Material	
Subfloor Labor	Priced per SQ FT	06 00 00 Wood, Plastics, and Composites	Labor	
11-7/8" TJI Joists	Priced per FT	06 00 00 Wood, Plastics, and Composites	Material	
Typ Wood Framed Wall		06 00 00 Wood, Plastics, and Composites	Linear	
2x6 104-5/8" Studs	16" OC Spacing	06 00 00 Wood, Plastics, and Composites	Material	
2x6x16' #2 Douglas Fir	2 Layers of Top Plate, 0 Rows of Shear Block	06 00 00 Wood, Plastics, and Composites	Material	
2x6x16' Pressure Treated	Bottom Plate	06 00 00 Wood, Plastics, and Composites	Material	
1/2" 4x8' OSB	4' x 8' Sheets	06 00 00 Wood, Plastics, and Composites	Material	
Framing Labor	Wall Labor Hours	06 00 00 Wood, Plastics, and Composites	Labor	
Doors	Used only to count doors for extra studs	06 00 00 Wood, Plastics, and Composites	Count	
Windows	Used only to count windows for extra studs	06 00 00 Wood, Plastics, and Composites	Count	
Multi-Ply Headers		06 00 00 Wood, Plastics, and Composites	Segment	
2x10x16 #2 Douglas Fir	Priced Each	06 00 00 Wood, Plastics, and Composites	Material	
Header Labor	Priced Each	06 00 00 Wood, Plastics, and Composites	Labor	
Single Ply Headers		06 00 00 Wood, Plastics, and Composites	Segment	
4x10x16 #2 Douglas Fir	Priced Each	06 00 00 Wood, Plastics, and Composites	Material	
Header Labor	Priced Each	06 00 00 Wood, Plastics, and Composites	Labor	
LVL Beam		06 00 00 Wood, Plastics, and Composites	Beam Tool	
LVL Beam		06 00 00 Wood, Plastics, and Composites	Material	
Beam Labor		06 00 00 Wood, Plastics, and Composites	Labor	
LSL Beam		06 00 00 Wood, Plastics, and Composites	Beam Tool	
LSL Beam		06 00 00 Wood, Plastics, and Composites	Material	
Beam Labor		06 00 00 Wood, Plastics, and Composites	Labor	
PSL Beam		06 00 00 Wood, Plastics, and Composites	Beam Tool	
PSL Beam		06 00 00 Wood, Plastics, and Composites	Material	
Beam Labor		06 00 00 Wood, Plastics, and Composites	Labor	
x Glulam		06 00 00 Wood, Plastics, and Composites	Beam Tool	
x Glulam		06 00 00 Wood, Plastics, and Composites	Material	
Beam Labor		06 00 00 Wood, Plastics, and Composites	Labor	

General Contractor – 06 Wood, Plastics, and Composites -- Continued

Name	Description	Division	Type	Color
[-] Finish Carpentry			Folder	█
[-] Base		06 00 00 Wood, Plastics, and Composites	Linear	█
4" MDF 10' Base		06 00 00 Wood, Plastics, and Composites	Material	
Base Board Labor		06 00 00 Wood, Plastics, and Composites	Labor	
[-] Crown		06 00 00 Wood, Plastics, and Composites	Linear	█
4" MDF 12' Crown		06 00 00 Wood, Plastics, and Composites	Material	
Crown Molding Labor		06 00 00 Wood, Plastics, and Composites	Labor	
[-] Base and Crown		06 00 00 Wood, Plastics, and Composites	Linear	█
4" MDF 10' Base		06 00 00 Wood, Plastics, and Composites	Material	
4" MDF 12' Crown		06 00 00 Wood, Plastics, and Composites	Material	
Base Labor		06 00 00 Wood, Plastics, and Composites	Labor	
Crown Labor		06 00 00 Wood, Plastics, and Composites	Labor	
[-] Handrail		06 00 00 Wood, Plastics, and Composites	Segment	█
2.25 IN x 16 FT Handrail	Unfinished Red Oak Plowed	06 00 00 Wood, Plastics, and Composites	Material	
44-IN Wrought Iron Twist Balusters	4.5" Spacing	06 00 00 Wood, Plastics, and Composites	Material	
Handrail Labor		06 00 00 Wood, Plastics, and Composites	Labor	
[-] Lump Sum Costs			Folder	█
Rough Carpentry		06 00 00 Wood, Plastics, and Composites	Subcontract	
Finish Carpentry		06 00 00 Wood, Plastics, and Composites	Subcontract	
Cabinets		06 00 00 Wood, Plastics, and Composites	Subcontract	
Millwork Package		06 00 00 Wood, Plastics, and Composites	Material	
Trusses Package		06 00 00 Wood, Plastics, and Composites	Material	
Lumber Package		06 00 00 Wood, Plastics, and Composites	Material	
Doors Package		06 00 00 Wood, Plastics, and Composites	Material	
Windows Package		06 00 00 Wood, Plastics, and Composites	Material	
Forklift		06 00 00 Wood, Plastics, and Composites	Equipment	
Scissor Lift		06 00 00 Wood, Plastics, and Composites	Equipment	
Crane		06 00 00 Wood, Plastics, and Composites	Equipment	
Labor		06 00 00 Wood, Plastics, and Composites	Labor	
Allowance		06 00 00 Wood, Plastics, and Composites	Other	

General Contractor – 07 Thermal and Moisture Protection

Name	Description	Division	Type	Color
07 Thermal and Moisture Protection			Folder	
Basic Assemblies			Folder	
Waterproofing		07 00 00 Thermal and Moisture Protection	Area	
Material	Waterproofing	07 00 00 Thermal and Moisture Protection	Material	
Labor	Waterproofing	07 00 00 Thermal and Moisture Protection	Labor	
EIFS		07 00 00 Thermal and Moisture Protection	Area	
Material	EIFS	07 00 00 Thermal and Moisture Protection	Material	
Labor	EIFS	07 00 00 Thermal and Moisture Protection	Labor	
Vinyl Siding		07 00 00 Thermal and Moisture Protection	Area	
Material	Vinyl Siding	07 00 00 Thermal and Moisture Protection	Material	
Labor	Vinyl Siding	07 00 00 Thermal and Moisture Protection	Labor	
Ceiling Batt Insulation		07 00 00 Thermal and Moisture Protection	Area	
Material	Ceiling Batt Insulation	07 00 00 Thermal and Moisture Protection	Material	
Labor	Ceiling Batt Insulation	07 00 00 Thermal and Moisture Protection	Labor	
Ceiling Blown Insulation		07 00 00 Thermal and Moisture Protection	Area	
Material	Ceiling Blown Insulation	07 00 00 Thermal and Moisture Protection	Material	
Labor	Ceiling Blown Insulation	07 00 00 Thermal and Moisture Protection	Labor	
Tile Roof (Plan View)		07 00 00 Thermal and Moisture Protection	Roof Area	
Material	Tile Roof (Plan View)	07 00 00 Thermal and Moisture Protection	Material	
Labor	Tile Roof (Plan View)	07 00 00 Thermal and Moisture Protection	Labor	
Metal Roof (Plan View)		07 00 00 Thermal and Moisture Protection	Roof Area	
Material	Metal Roof (Plan View)	07 00 00 Thermal and Moisture Protection	Material	
Labor	Metal Roof (Plan View)	07 00 00 Thermal and Moisture Protection	Labor	
Ashpault Shingles Roof (Plan View)		07 00 00 Thermal and Moisture Protection	Roof Area	
Material	Ashpault Shingles Roof (Plan View)	07 00 00 Thermal and Moisture Protection	Material	
Labor	Ashpault Shingles Roof (Plan View)	07 00 00 Thermal and Moisture Protection	Labor	
Tile Roof (Elev. View)		07 00 00 Thermal and Moisture Protection	Roof Area	
Material	Tile Roof (Elev. View)	07 00 00 Thermal and Moisture Protection	Material	
Labor	Tile Roof (Elev. View)	07 00 00 Thermal and Moisture Protection	Labor	
Metal Roof (Elev. View)		07 00 00 Thermal and Moisture Protection	Roof Area	
Material	Metal Roof (Elev. View)	07 00 00 Thermal and Moisture Protection	Material	
Labor	Metal Roof (Elev. View)	07 00 00 Thermal and Moisture Protection	Labor	
Ashpault Shingles Roof (Elev. View)		07 00 00 Thermal and Moisture Protection	Roof Area	
Material	Ashpault Shingles Roof (Elev. View)	07 00 00 Thermal and Moisture Protection	Material	
Labor	Ashpault Shingles Roof (Elev. View)	07 00 00 Thermal and Moisture Protection	Labor	
Wall Batt Insulation		07 00 00 Thermal and Moisture Protection	Linear	
Material	Wall Batt Insulation	07 00 00 Thermal and Moisture Protection	Material	
Labor	Wall Batt Insulation	07 00 00 Thermal and Moisture Protection	Labor	
Wall Blown Insulation		07 00 00 Thermal and Moisture Protection	Linear	
Material	Wall Blown Insulation	07 00 00 Thermal and Moisture Protection	Material	
Labor	Wall Blown Insulation	07 00 00 Thermal and Moisture Protection	Labor	
Gutters and Downspouts		07 00 00 Thermal and Moisture Protection	Linear	
Material	Gutters and Downspouts	07 00 00 Thermal and Moisture Protection	Material	
Labor	Gutters and Downspouts	07 00 00 Thermal and Moisture Protection	Labor	
Flashing and Trim		07 00 00 Thermal and Moisture Protection	Linear	
Material	Flashing and Trim	07 00 00 Thermal and Moisture Protection	Material	
Labor	Flashing and Trim	07 00 00 Thermal and Moisture Protection	Labor	
Aluminum Soffit		07 00 00 Thermal and Moisture Protection	Linear	
Material	Aluminum Soffit	07 00 00 Thermal and Moisture Protection	Material	
Labor	Aluminum Soffit	07 00 00 Thermal and Moisture Protection	Labor	
Skylights		07 00 00 Thermal and Moisture Protection	Count	
Material	Skylights	07 00 00 Thermal and Moisture Protection	Material	
Labor	Skylights	07 00 00 Thermal and Moisture Protection	Labor	
Roof Vents		07 00 00 Thermal and Moisture Protection	Count	
Material	Roof Vents	07 00 00 Thermal and Moisture Protection	Material	
Labor	Roof Vents	07 00 00 Thermal and Moisture Protection	Labor	

General Contractor – 07 Thermal and Moisture Protection -- Continued

Name	Description	Division	Type	Color
Advanced Assemblies			Folder	
Insulation			Folder	
Ceiling Batt Insulation		07 00 00 Thermal and Moisture Protection	Area	
R-30 Insulation	Coverage: 50 Sq Ft	07 00 00 Thermal and Moisture Protection	Material	
Insulation Labor		07 00 00 Thermal and Moisture Protection	Labor	
Wall Batt Insulation		07 00 00 Thermal and Moisture Protection	Linear	
R-19 Insulation	Coverage: 50 Sq Ft	07 00 00 Thermal and Moisture Protection	Material	
Insulation Labor		07 00 00 Thermal and Moisture Protection	Labor	
Siding			Folder	
Stucco		07 00 00 Thermal and Moisture Protection	Area	
Moisture Barrier		07 00 00 Thermal and Moisture Protection	Material	
Self-Furred Lath		07 00 00 Thermal and Moisture Protection	Material	
80lb Bag Base Coat		07 00 00 Thermal and Moisture Protection	Material	
80lb Bag Finish Coat		07 00 00 Thermal and Moisture Protection	Material	
Stucco Labor		07 00 00 Thermal and Moisture Protection	Labor	
Siding		07 00 00 Thermal and Moisture Protection	Area	
Moisture Barrier		07 00 00 Thermal and Moisture Protection	Material	
Panel Siding		07 00 00 Thermal and Moisture Protection	Material	
Siding Labor		07 00 00 Thermal and Moisture Protection	Labor	
J Channel		07 00 00 Thermal and Moisture Protection	Linear	
10' J-Channel		07 00 00 Thermal and Moisture Protection	Material	
J-Channel Labor		07 00 00 Thermal and Moisture Protection	Labor	
Weep Screed		07 00 00 Thermal and Moisture Protection	Linear	
10' Weep Screed		07 00 00 Thermal and Moisture Protection	Material	
Weep Screed Labor		07 00 00 Thermal and Moisture Protection	Labor	
Sloped Roofing			Folder	
Asphalt Shingle Roof (Elevation View)		07 00 00 Thermal and Moisture Protection	Area	
30 Yr Asphalt Shingles		07 00 00 Thermal and Moisture Protection	Material	
15# Asphalt Felt		07 00 00 Thermal and Moisture Protection	Material	
Roofing Labor		07 00 00 Thermal and Moisture Protection	Labor	
Asphalt Shingle Roof (Plan View)		07 00 00 Thermal and Moisture Protection	Area	
30 Yr Asphalt Shingles		07 00 00 Thermal and Moisture Protection	Material	
15# Asphalt Felt		07 00 00 Thermal and Moisture Protection	Material	
Roofing Labor		07 00 00 Thermal and Moisture Protection	Labor	
Drip Edge		07 00 00 Thermal and Moisture Protection	Linear	
12' Drip Edge		07 00 00 Thermal and Moisture Protection	Material	
Drip Edge Labor		07 00 00 Thermal and Moisture Protection	Labor	
Ridge Shingles		07 00 00 Thermal and Moisture Protection	Segment	
Ridge Shingles		07 00 00 Thermal and Moisture Protection	Material	
Ridge Shingles Labor		07 00 00 Thermal and Moisture Protection	Labor	

General Contractor – 07 Thermal and Moisture Protection -- Continued

Name	Description	Division	Type	Color
Single/Multi Ply Roofing			Folder	
TPO Roof System		07 00 00 Thermal and Moisture Protection	Area	
TPO 45 Mil Mem.	10' x 100' Roll	07 00 00 Thermal and Moisture Protection	Material	
6" Seam Tape	100' Roll	07 00 00 Thermal and Moisture Protection	Material	
4" Fasteners	#3 Phillips Head, Case-Hardened Steel, 14 ga, 1000/Box	07 00 00 Thermal and Moisture Protection	Material	
2" Plates	Galvalume-Coated Steel, 12" O.C. Spacing, 1000 per Box	07 00 00 Thermal and Moisture Protection	Material	
Cover Board	4' x 8' Sheets	07 00 00 Thermal and Moisture Protection	Material	
4" Fasteners	#3 Phillips Head, Case-Hardened Steel, 14 ga, 1000/Box	07 00 00 Thermal and Moisture Protection	Material	
2" Plates	Galvalume-Coated Steel, 1000/Box	07 00 00 Thermal and Moisture Protection	Material	
Insulation	4' x 8' Sheets	07 00 00 Thermal and Moisture Protection	Material	
4" Fasteners	#3 Phillips Head, Case-Hardened Steel, 14 ga, 1000/Box	07 00 00 Thermal and Moisture Protection	Material	
2" Plates	Galvalume-Coated Steel, 1000/Box	07 00 00 Thermal and Moisture Protection	Material	
Roofing Labor	Priced per SQ FT	07 00 00 Thermal and Moisture Protection	Labor	
TPO Wall Flashing		07 00 00 Thermal and Moisture Protection	Linear	
TPO 45 Mil	10' x 100' Roll	07 00 00 Thermal and Moisture Protection	Material	
TPO/EPDM LVOC Adhesive	LVOC, 5 Gal. Container	07 00 00 Thermal and Moisture Protection	Material	
Sloped Metal Coping	10' Lengths	07 00 00 Thermal and Moisture Protection	Material	
Labor	Priced per SQ FT	07 00 00 Thermal and Moisture Protection	Labor	
BUR Roof System		07 00 00 Thermal and Moisture Protection	Area	
Cap Sheet	Coverage: 100 SQ FT per Roll	07 00 00 Thermal and Moisture Protection	Material	
Ply Sheet	Coverage: 300 SQ FT per Roll	07 00 00 Thermal and Moisture Protection	Material	
Base Sheet	Coverage: 300 SQ FT per Roll	07 00 00 Thermal and Moisture Protection	Material	
Type III Asphalt	Coverage: 25 lbs/100 Sq Ft, 100 lb Cartons		Material	
Cover Board MF	4' x 8' Sheet(s)	07 00 00 Thermal and Moisture Protection	Material	
4" Fasteners	#3 Phillips Head, Case-Hardened Steel, 14 ga, 1000/Pail	07 00 00 Thermal and Moisture Protection	Material	
2" Plates	Galvalume-Coated Steel, 1000/Pail	07 00 00 Thermal and Moisture Protection	Material	
Insulation	4' x 8' Sheet(s)	07 00 00 Thermal and Moisture Protection	Material	
4" Fasteners	#3 Phillips Head, Case-Hardened Steel, 14 ga, 1000/Pail	07 00 00 Thermal and Moisture Protection	Material	
2" Plates	Galvalume-Coated Steel, 1000/Pail	07 00 00 Thermal and Moisture Protection	Material	
Roofing Labor	Priced per SQ FT	07 00 00 Thermal and Moisture Protection	Labor	
BUR Flat Edge Flashing		07 00 00 Thermal and Moisture Protection	Linear	
Cap Flashing	24" x 50' Roll	07 00 00 Thermal and Moisture Protection	Material	
Base Flashing	24" x 50' Roll	07 00 00 Thermal and Moisture Protection	Material	
4" Metal Roof Edge	8' Lengths	07 00 00 Thermal and Moisture Protection	Material	
4" Joint Cover	8' O.C. Spacing	07 00 00 Thermal and Moisture Protection	Material	
Edge Flashing Fasteners	12" O.C. Spacing, 1 Row(s), 5000 per Box	07 00 00 Thermal and Moisture Protection	Material	
Roofing Labor	Priced per FT	07 00 00 Thermal and Moisture Protection	Labor	
Lump Sum Costs			Folder	
Waterproofing		07 00 00 Thermal and Moisture Protection	Subcontract	
Fireproofing		07 00 00 Thermal and Moisture Protection	Subcontract	
EIFS		07 00 00 Thermal and Moisture Protection	Subcontract	
Stucco		07 00 00 Thermal and Moisture Protection	Subcontract	
Siding		07 00 00 Thermal and Moisture Protection	Subcontract	
Roofing		07 00 00 Thermal and Moisture Protection	Subcontract	
Rain Gutters		07 00 00 Thermal and Moisture Protection	Subcontract	
Fascia and Soffit		07 00 00 Thermal and Moisture Protection	Subcontract	
Scaffolding		07 00 00 Thermal and Moisture Protection	Equipment	
Forklift		07 00 00 Thermal and Moisture Protection	Equipment	
Scissor Lift		07 00 00 Thermal and Moisture Protection	Equipment	
Mixer		07 00 00 Thermal and Moisture Protection	Equipment	
Crane		07 00 00 Thermal and Moisture Protection	Equipment	
Labor		07 00 00 Thermal and Moisture Protection	Labor	
Allowance		07 00 00 Thermal and Moisture Protection	Other	

General Contractor – 08 Openings

Name	Description	Division	Type	Color
08 Openings			Folder	Black
Basic Assemblies			Folder	Black
Curtain Wall Systems		08 00 00 Openings	Area	Yellow
Material	Curtain Wall Systems	08 00 00 Openings	Material	
Labor	Curtain Wall Systems	08 00 00 Openings	Labor	
Steel Door Frames		08 00 00 Openings	Count	Green
Material	Steel Door Frames	08 00 00 Openings	Material	
Labor	Steel Door Frames	08 00 00 Openings	Labor	
Glass and Glazing		08 00 00 Openings	Area	Red
Material	Glass and Glazing	08 00 00 Openings	Material	
Labor	Glass and Glazing	08 00 00 Openings	Labor	
Window Bucks		08 00 00 Openings	Count	Teal
Material	Window Bucks	08 00 00 Openings	Material	
Labor	Window Bucks	08 00 00 Openings	Labor	
Storefront		08 00 00 Openings	Count	Purple
Material	Storefront	08 00 00 Openings	Material	
Labor	Storefront	08 00 00 Openings	Labor	
Windows		08 00 00 Openings	Count	Blue
Material	Windows	08 00 00 Openings	Material	
Labor	Windows	08 00 00 Openings	Labor	
Doors		08 00 00 Openings	Count	Olive
Material	Doors	08 00 00 Openings	Material	
Labor	Doors	08 00 00 Openings	Labor	
Vents		08 00 00 Openings	Count	Green
Material	Vents	08 00 00 Openings	Material	
Labor	Vents	08 00 00 Openings	Labor	
Advanced Assemblies			Folder	Black
Doors		08 00 00 Openings	Count	Pink
2-8 x 6-8, Right Swing, 6-Panel Interior Door		08 00 00 Openings	Material	
Door Install Labor		08 00 00 Openings	Labor	
Windows		08 00 00 Openings	Count	Blue
4-0 5-0 Sliding Window		08 00 00 Openings	Material	
Window Install Labor		08 00 00 Openings	Labor	
Lump Sum Costs			Folder	Black
Metal Doors		08 00 00 Openings	Subcontract	
Curtain Wall System		08 00 00 Openings	Subcontract	
Glass and Glazing		08 00 00 Openings	Subcontract	
Wood and Plastic Doors		08 00 00 Openings	Material	
Windows		08 00 00 Openings	Material	
Metal Doors		08 00 00 Openings	Material	
Crane		08 00 00 Openings	Equipment	
Scissor Lift		08 00 00 Openings	Equipment	
Forklift		08 00 00 Openings	Equipment	
Scaffolding		08 00 00 Openings	Equipment	
Labor		08 00 00 Openings	Labor	
Allowance		08 00 00 Openings	Other	

General Contractor – 09 Finishes

Name	Description	Division	Type	Color
09 Finishes			Folder	
Basic Assemblies			Folder	
Drywall Ceiling		09 00 00 Finishes	Area	
Material	Drywall Ceiling	09 00 00 Finishes	Material	
Labor	Drywall Ceiling	09 00 00 Finishes	Labor	
Painted Ceiling		09 00 00 Finishes	Area	
Material	Painted Ceiling	09 00 00 Finishes	Material	
Labor	Painted Ceiling	09 00 00 Finishes	Labor	
Acoustic Ceiling		09 00 00 Finishes	Area	
Material	Acoustic Ceiling	09 00 00 Finishes	Material	
Labor	Acoustic Ceiling	09 00 00 Finishes	Labor	
Flooring - Carpet		09 00 00 Finishes	Area	
Material	Flooring - Carpet	09 00 00 Finishes	Material	
Labor	Flooring - Carpet	09 00 00 Finishes	Labor	
Flooring - Wood		09 00 00 Finishes	Area	
Material	Flooring - Wood	09 00 00 Finishes	Material	
Labor	Flooring - Wood	09 00 00 Finishes	Labor	
Flooring - Stone		09 00 00 Finishes	Area	
Material	Flooring - Stone	09 00 00 Finishes	Material	
Labor	Flooring - Stone	09 00 00 Finishes	Labor	
Flooring - Vinyl		09 00 00 Finishes	Area	
Material	Flooring - Vinyl	09 00 00 Finishes	Material	
Labor	Flooring - Vinyl	09 00 00 Finishes	Labor	
Flooring - Tile		09 00 00 Finishes	Area	
Material	Flooring - Tile	09 00 00 Finishes	Material	
Labor	Flooring - Tile	09 00 00 Finishes	Labor	
Drywall		09 00 00 Finishes	Linear	
Material	Drywall	09 00 00 Finishes	Material	
Labor	Drywall	09 00 00 Finishes	Labor	
Paint		09 00 00 Finishes	Linear	
Material	Paint	09 00 00 Finishes	Material	
Labor	Paint	09 00 00 Finishes	Labor	
Wall Covering		09 00 00 Finishes	Linear	
Material	Wall Covering	09 00 00 Finishes	Material	
Labor	Wall Covering	09 00 00 Finishes	Labor	
Wall Tile		09 00 00 Finishes	Linear	
Material	Wall Tile	09 00 00 Finishes	Material	
Labor	Wall Tile	09 00 00 Finishes	Labor	
Rubber Base		09 00 00 Finishes	Linear	
Material	Rubber Base	09 00 00 Finishes	Material	
Labor	Rubber Base	09 00 00 Finishes	Labor	
Door Paint		09 00 00 Finishes	Count	
Material	Door Paint	09 00 00 Finishes	Material	
Labor	Door Paint	09 00 00 Finishes	Labor	

General Contractor – 09 Finishes -- Continued

Name	Description	Division	Type	Color
Advanced Assemblies			Folder	
Acoustic Ceiling Tile			Folder	
2x4 Accoustical Ceiling Tile		09 00 00 Finishes	Area	
2' W x 4' L x 1" Tiles	2' x 4' Tiles	09 00 00 Finishes	Material	
10' Wall Angle	Area Perimeter: 0.00 FT	09 00 00 Finishes	Material	
12' Main	Spaced 4' on center	09 00 00 Finishes	Material	
4' Tee	Spaced 2' on center	09 00 00 Finishes	Material	
3' 12 ga. Hanger Wire	Spaced 4' on center	09 00 00 Finishes	Material	
ACT Labor	Installation Labor priced per SQ FT	09 00 00 Finishes	Labor	
2x2 Accoustical Ceiling Tile		09 00 00 Finishes	Area	
2' W x 2' L x 1" Tile	2' x 2' Tiles	09 00 00 Finishes	Material	
10' Wall Angle	Area Perimeter: 0.00 FT	09 00 00 Finishes	Material	
12' Main	Spaced 4' on center	09 00 00 Finishes	Material	
4' Tee	Spaced 2' on center	09 00 00 Finishes	Material	
2' Tee	Spaced 4' on center	09 00 00 Finishes	Material	
3' 12 ga. Hanger Wire	Spaced 4' on center	09 00 00 Finishes	Material	
ACT Labor	Installation Labor priced per SQ FT	09 00 00 Finishes	Labor	
Drywall			Folder	
Drywall Ceiling		09 00 00 Finishes	Area	
1/2" Mold and Moisture Resistant	4' x 12' Sheets	09 00 00 Finishes	Material	
Joint Tape	250' Roll	09 00 00 Finishes	Material	
Joint Compound	4.5 Gal Joint Compound	09 00 00 Finishes	Material	
Drywall Screws	#8 2" Screws; Box Size: 5000 Qty	09 00 00 Finishes	Material	
Hanging Labor		09 00 00 Finishes	Labor	
Finish Labor		09 00 00 Finishes	Labor	
Drywall Wall Assembly		09 00 00 Finishes	Linear	
1/2" Mold and Moisture Resistant	4.5' x 12' Sheets	09 00 00 Finishes	Material	
Joint Tape	250' Roll	09 00 00 Finishes	Material	
Joint Compound	4.5 Gal Joint Compound	09 00 00 Finishes	Material	
Drywall Screws	#8 2" Screws; Box Size: 5000 Qty	09 00 00 Finishes	Material	
Hanging Labor		09 00 00 Finishes	Labor	
Finish Labor		09 00 00 Finishes	Labor	
Corner Bead		09 00 00 Finishes	Count	
9' Outside 90 Deg Corner Bead		09 00 00 Finishes	Material	
Corner Bead Labor		09 00 00 Finishes	Labor	
Flooring			Folder	
Hardwood Flooring		09 00 00 Finishes	Area	
Hardwood Flooring		09 00 00 Finishes	Material	
HW Flooring Labor		09 00 00 Finishes	Labor	
Vinyl Flooring		09 00 00 Finishes	Area	
Vinyl Flooring		09 00 00 Finishes	Material	
Vinyl Flooring Labor		09 00 00 Finishes	Labor	
Carpet		09 00 00 Finishes	Area	
Carpet		09 00 00 Finishes	Material	
Carpet Pad		09 00 00 Finishes	Material	
Carpet Labor		09 00 00 Finishes	Labor	

General Contractor – 09 Finishes -- Continued

Name	Description	Division	Type	Color
Paint			Folder	
Painted Area		09 00 00 Finishes	Area	
Finish Paint	2 Coat(s), 280 SQ FT/Gallon	09 00 00 Finishes	Material	
Primer	1 Coat(s), SQ FT/Gallon	09 00 00 Finishes	Material	
Paint Labor		09 00 00 Finishes	Labor	
Painted Wall		09 00 00 Finishes	Linear	
Finish Paint	1 Side(s) of Wall, 2 Coat(s), 280 SQ FT/Gallon	09 00 00 Finishes	Material	
Primer	1 Side(s) of Wall, 1 Coat(s), 300 SQ FT/Gallon	09 00 00 Finishes	Material	
Paint Labor		09 00 00 Finishes	Labor	
Painted Door		09 00 00 Finishes	Count	
Finish Paint	2 Coat(s), 280 SQ FT/Gallon	09 00 00 Finishes	Material	
Primer	1 Coat(s), 300 SQ FT/Gallon	09 00 00 Finishes	Material	
Paint Labor		09 00 00 Finishes	Labor	
Tile			Folder	
Floor Tile		09 00 00 Finishes	Area	
12" x 12" Ceramic Tile		09 00 00 Finishes	Material	
25 lb Gray Tile Grout		09 00 00 Finishes	Material	
Thin-Set Mortar		09 00 00 Finishes	Material	
Tile Labor		09 00 00 Finishes	Labor	
Wall Tile		09 00 00 Finishes	Linear	
12" x 12" Porcelain Tile		09 00 00 Finishes	Material	
25 lb Gray Tile Grout		09 00 00 Finishes	Material	
Thin-Set Mortar		09 00 00 Finishes	Material	
Tile Labor		09 00 00 Finishes	Labor	
Backsplash		09 00 00 Finishes	Linear	
4" x 4" Porcelain Tile		09 00 00 Finishes	Material	
25 lb Gray Tile Grout		09 00 00 Finishes	Material	
Thin-Set Mortar		09 00 00 Finishes	Material	
Tile Labor		09 00 00 Finishes	Labor	
Lump Sum Costs			Folder	
Drywall		09 00 00 Finishes	Subcontract	
Acoustic Ceiling		09 00 00 Finishes	Subcontract	
Tile		09 00 00 Finishes	Subcontract	
Carpet		09 00 00 Finishes	Subcontract	
Wood Flooring		09 00 00 Finishes	Subcontract	
Vinyl Flooring		09 00 00 Finishes	Subcontract	
Wall Coverings		09 00 00 Finishes	Subcontract	
Scissor Lift		09 00 00 Finishes	Equipment	
Scaffolding		09 00 00 Finishes	Equipment	
Labor		09 00 00 Finishes	Labor	
Allowance		09 00 00 Finishes	Other	

General Contractor – 10 Specialties

Name	Description	Division	Type	Color
10 Specialties			Folder	Black
Basic Assemblies			Folder	Black
Fireplaces		10 00 00 Specialties	Count	Cyan
Material	Fireplaces	10 00 00 Specialties	Material	
Labor	Fireplaces	10 00 00 Specialties	Labor	
Lockers		10 00 00 Specialties	Count	Magenta
Material	Lockers	10 00 00 Specialties	Material	
Labor	Lockers	10 00 00 Specialties	Labor	
Canopy		10 00 00 Specialties	Count	Blue
Material	Canopy	10 00 00 Specialties	Material	
Labor	Canopy	10 00 00 Specialties	Labor	
Partitions		10 00 00 Specialties	Count	Yellow
Material	Partitions	10 00 00 Specialties	Material	
Labor	Partitions	10 00 00 Specialties	Labor	
Awning		10 00 00 Specialties	Count	Green
Material	Awning	10 00 00 Specialties	Material	
Labor	Awning	10 00 00 Specialties	Labor	
Stoves		10 00 00 Specialties	Count	Red
Material	Stoves	10 00 00 Specialties	Material	
Labor	Stoves	10 00 00 Specialties	Labor	
Exterior Signs		10 00 00 Specialties	Count	Teal
Material	Exterior Signs	10 00 00 Specialties	Material	
Labor	Exterior Signs	10 00 00 Specialties	Labor	
Interior Signs		10 00 00 Specialties	Count	Purple
Material	Interior Signs	10 00 00 Specialties	Material	
Labor	Interior Signs	10 00 00 Specialties	Labor	
Toilet and Bath Accessories		10 00 00 Specialties	Count	Dark Blue
Material	Toilet and Bath Accessories	10 00 00 Specialties	Material	
Labor	Toilet and Bath Accessories	10 00 00 Specialties	Labor	
Lump Sum Costs			Folder	Black
Interior Signs		10 00 00 Specialties	Subcontract	
Awning		10 00 00 Specialties	Subcontract	
Canopy		10 00 00 Specialties	Subcontract	
Lockers		10 00 00 Specialties	Subcontract	
Fireplaces		10 00 00 Specialties	Subcontract	
Labor		10 00 00 Specialties	Labor	
Allowance		10 00 00 Specialties	Other	

General Contractor – 11 Equipment

Name	Description	Division	Type	Color
11 Equipment			Folder	Black
Basic Assemblies			Folder	Black
Teller Equipment		11 00 00 Equipment	Count	Teal
Material	Teller Equipment	11 00 00 Equipment	Material	
Labor	Teller Equipment	11 00 00 Equipment	Labor	
Projection Screens		11 00 00 Equipment	Count	Purple
Material	Projection Screens	11 00 00 Equipment	Material	
Labor	Projection Screens	11 00 00 Equipment	Labor	
Food Service Equipment		11 00 00 Equipment	Count	Blue
Material	Food Service Equipment	11 00 00 Equipment	Material	
Labor	Food Service Equipment	11 00 00 Equipment	Labor	
Hospitality Equipment		11 00 00 Equipment	Count	Olive
Material	Hospitality Equipment	11 00 00 Equipment	Material	
Labor	Hospitality Equipment	11 00 00 Equipment	Labor	
Athletic Equipment		11 00 00 Equipment	Count	Green
Material	Athletic Equipment	11 00 00 Equipment	Material	
Labor	Athletic Equipment	11 00 00 Equipment	Labor	
Office Equipment		11 00 00 Equipment	Count	Red
Material	Office Equipment	11 00 00 Equipment	Material	
Labor	Office Equipment	11 00 00 Equipment	Labor	
Lump Sum Costs			Folder	Black
Teller Equipment		11 00 00 Equipment	Subcontract	
Projection Equipment		11 00 00 Equipment	Subcontract	
Athletic Equipment		11 00 00 Equipment	Subcontract	
Food Service Equipment		11 00 00 Equipment	Subcontract	
Loading Dock Equipment		11 00 00 Equipment	Subcontract	
Medical Equipment		11 00 00 Equipment	Subcontract	
Labor		11 00 00 Equipment	Labor	
Allowance		11 00 00 Equipment	Other	

General Contractor – 12 Furnishings

Name	Description	Division	Type	Color
12 Furnishings			Folder	Black
Basic Assemblies			Folder	Black
Countertops		12 00 00 Furnishings	Area	Cyan
Material	Countertops	12 00 00 Furnishings	Material	
Labor	Countertops	12 00 00 Furnishings	Labor	
Cubicals		12 00 00 Furnishings	Area	Magenta
Material	Cubicals	12 00 00 Furnishings	Material	
Labor	Cubicals	12 00 00 Furnishings	Labor	
Wall Decorations		12 00 00 Furnishings	Count	Blue
Material	Wall Decorations	12 00 00 Furnishings	Material	
Labor	Wall Decorations	12 00 00 Furnishings	Labor	
Blinds		12 00 00 Furnishings	Count	Yellow
Material	Blinds	12 00 00 Furnishings	Material	
Labor	Blinds	12 00 00 Furnishings	Labor	
Furniture		12 00 00 Furnishings	Count	Green
Material	Furniture	12 00 00 Furnishings	Material	
Labor	Furniture	12 00 00 Furnishings	Labor	
Casework		12 00 00 Furnishings	Count	Red
Material	Casework	12 00 00 Furnishings	Material	
Labor	Casework	12 00 00 Furnishings	Labor	
Lump Sum Costs			Folder	Black
Blinds		12 00 00 Furnishings	Subcontract	
Decorations		12 00 00 Furnishings	Subcontract	
Curtains		12 00 00 Furnishings	Subcontract	
Cubicals		12 00 00 Furnishings	Subcontract	
Casework		12 00 00 Furnishings	Subcontract	
Floor Mats		12 00 00 Furnishings	Subcontract	
Labor		12 00 00 Furnishings	Labor	
Allowance		12 00 00 Furnishings	Other	

General Contractor – 13 Special Construction

Name	Description	Division	Type	Color
13 Special Construction			Folder	Black
Basic Assemblies			Folder	Black
Fountain		13 00 00 Special Construction	Count	Blue
Material	Fountain	13 00 00 Special Construction	Material	
Labor	Fountain	13 00 00 Special Construction	Labor	
Aquarium		13 00 00 Special Construction	Count	Olive
Material	Aquarium	13 00 00 Special Construction	Material	
Labor	Aquarium	13 00 00 Special Construction	Labor	
Vault		13 00 00 Special Construction	Count	Green
Material	Vault	13 00 00 Special Construction	Material	
Labor	Vault	13 00 00 Special Construction	Labor	
Swimming Pool		13 00 00 Special Construction	Count	Red
Material	Swimming Pool	13 00 00 Special Construction	Material	
Labor	Swimming Pool	13 00 00 Special Construction	Labor	
Lump Sum Costs			Folder	Black
Sauna		13 00 00 Special Construction	Subcontract	
Swimming Pool		13 00 00 Special Construction	Subcontract	
Vault		13 00 00 Special Construction	Subcontract	
Aquarium		13 00 00 Special Construction	Subcontract	
Fountain		13 00 00 Special Construction	Subcontract	
Labor		13 00 00 Special Construction	Labor	
Allowance		13 00 00 Special Construction	Other	

General Contractor – 14 Conveying Equipment

Name	Description	Division	Type	Color
14 Conveying Equipment			Folder	Black
Basic Assemblies			Folder	Black
Elevator		14 00 00 Conveying Equipment	Count	Red
Material	Elevator	14 00 00 Conveying Equipment	Material	
Labor	Elevator	14 00 00 Conveying Equipment	Labor	
Escalator		14 00 00 Conveying Equipment	Count	Teal
Material	Escalator	14 00 00 Conveying Equipment	Material	
Labor	Escalator	14 00 00 Conveying Equipment	Labor	
Wheelchair Lift		14 00 00 Conveying Equipment	Count	Purple
Material	Wheelchair Lift	14 00 00 Conveying Equipment	Material	
Labor	Wheelchair Lift	14 00 00 Conveying Equipment	Labor	
Lump Sum Costs			Folder	Black
Elevator		14 00 00 Conveying Equipment	Subcontract	
Escalators/Moving Walks		14 00 00 Conveying Equipment	Subcontract	
Wheelchair Lifts		14 00 00 Conveying Equipment	Subcontract	
Cranes		14 00 00 Conveying Equipment	Subcontract	
Labor		14 00 00 Conveying Equipment	Labor	
Allowance		14 00 00 Conveying Equipment	Other	

General Contractor – 21 Fire Suppression

Name	Description	Division	Type	Color
21 Fire Suppression			Folder	Black
Basic Assemblies			Folder	Black
Fire-Suppression Storage Tanks		21 00 00 Fire Suppression	Count	Blue
Material	Fire-Suppression Storage Tanks	21 00 00 Fire Suppression	Material	
Labor	Fire-Suppression Storage Tanks	21 00 00 Fire Suppression	Labor	
Fire-Suppression Sprinkler System		21 00 00 Fire Suppression	Area	Yellow
Material	Fire-Suppression Sprinkler System	21 00 00 Fire Suppression	Material	
Labor	Fire-Suppression Sprinkler System	21 00 00 Fire Suppression	Labor	
Fire Pump		21 00 00 Fire Suppression	Count	Green
Material	Fire Pump	21 00 00 Fire Suppression	Material	
Labor	Fire Pump	21 00 00 Fire Suppression	Labor	
Lump Sum Costs			Folder	Black
Fire-Suppression System		21 00 00 Fire Suppression	Subcontract	
Scissor Lift		21 00 00 Fire Suppression	Equipment	
Man Lift		21 00 00 Fire Suppression	Equipment	
Labor		21 00 00 Fire Suppression	Labor	
Allowance		21 00 00 Fire Suppression	Other	

General Contractor – 22 Plumbing

Name	Description	Division	Type	Color
22 Plumbing			Folder	Black
Basic Assemblies			Folder	Black
Plumbing		22 00 00 Plumbing	Area	Green
Material	Plumbing	22 00 00 Plumbing	Material	
Labor	Plumbing	22 00 00 Plumbing	Labor	
PVC Pipe		22 00 00 Plumbing	Linear	Red
Material	PVC Pipe	22 00 00 Plumbing	Material	
Labor	PVC Pipe	22 00 00 Plumbing	Labor	
Copper Pipe		22 00 00 Plumbing	Linear	Teal
Material	Copper Pipe	22 00 00 Plumbing	Material	
Labor	Copper Pipe	22 00 00 Plumbing	Labor	
Toilet		22 00 00 Plumbing	Count	Purple
Material	Toilet	22 00 00 Plumbing	Material	
Labor	Toilet	22 00 00 Plumbing	Labor	
Sink		22 00 00 Plumbing	Count	Dark Blue
Material	Sink	22 00 00 Plumbing	Material	
Labor	Sink	22 00 00 Plumbing	Labor	
Urinal		22 00 00 Plumbing	Count	Olive Green
Material	Urinal	22 00 00 Plumbing	Material	
Labor	Urinal	22 00 00 Plumbing	Labor	
Water Heater		22 00 00 Plumbing	Count	Green
Material	Water Heater	22 00 00 Plumbing	Material	
Labor	Water Heater	22 00 00 Plumbing	Labor	
Water Softener		22 00 00 Plumbing	Count	Dark Red
Material	Water Softener	22 00 00 Plumbing	Material	
Labor	Water Softener	22 00 00 Plumbing	Labor	
Water Cooler		22 00 00 Plumbing	Count	Cyan
Material	Water Cooler	22 00 00 Plumbing	Material	
Labor	Water Cooler	22 00 00 Plumbing	Labor	
Drinking Fountain		22 00 00 Plumbing	Count	Magenta
Material	Drinking Fountain	22 00 00 Plumbing	Material	
Labor	Drinking Fountain	22 00 00 Plumbing	Labor	
Advanced Assemblies			Folder	Black
Cold Water Line		22 00 00 Plumbing	Linear	Cyan
1" x 20' PVC SDR 35		22 00 00 Plumbing	Material	
Plumbing Labor		22 00 00 Plumbing	Labor	
Waste Water Line		22 00 00 Plumbing	Linear	Magenta
4" x 20' PVC SDR 35		22 00 00 Plumbing	Material	
Plumbing Labor		22 00 00 Plumbing	Labor	
Hot Water Line		22 00 00 Plumbing	Linear	Blue
4" x 10' Copper Type K		22 00 00 Plumbing	Material	
Plumbing Labor		22 00 00 Plumbing	Labor	
Sewer Cleanout		22 00 00 Plumbing	Count	Yellow
4" Cleanout		22 00 00 Plumbing	Material	
Plumbing Labor		22 00 00 Plumbing	Labor	
Lump Sum Costs			Folder	Black
Plumbing		22 00 00 Plumbing	Subcontract	
Labor		22 00 00 Plumbing	Labor	
Allowance		22 00 00 Plumbing	Other	

General Contractor – 23 HVAC

Name	Description	Division	Type	Color
23 HVAC			Folder	
Basic Assemblies			Folder	
HVAC		23 00 00 Heating, Ventilating, and Air Conditioning (HVAC)	Area	
Material	HVAC	23 00 00 Heating, Ventilating, and Air Conditioning (HVAC)	Material	
Labor	HVAC	23 00 00 Heating, Ventilating, and Air Conditioning (HVAC)	Labor	
Rectangular Duct		23 00 00 Heating, Ventilating, and Air Conditioning (HVAC)	Linear	
Material	Rectangular Duct	23 00 00 Heating, Ventilating, and Air Conditioning (HVAC)	Material	
Labor	Rectangular Duct	23 00 00 Heating, Ventilating, and Air Conditioning (HVAC)	Labor	
Round Duct		23 00 00 Heating, Ventilating, and Air Conditioning (HVAC)	Linear	
Material	Round Duct	23 00 00 Heating, Ventilating, and Air Conditioning (HVAC)	Material	
Labor	Round Duct	23 00 00 Heating, Ventilating, and Air Conditioning (HVAC)	Labor	
Flex		23 00 00 Heating, Ventilating, and Air Conditioning (HVAC)	Linear	
Material	Flex	23 00 00 Heating, Ventilating, and Air Conditioning (HVAC)	Material	
Labor	Flex	23 00 00 Heating, Ventilating, and Air Conditioning (HVAC)	Labor	
Trunk		23 00 00 Heating, Ventilating, and Air Conditioning (HVAC)	Linear	
Material	Trunk	23 00 00 Heating, Ventilating, and Air Conditioning (HVAC)	Material	
Labor	Trunk	23 00 00 Heating, Ventilating, and Air Conditioning (HVAC)	Labor	
Furnace		23 00 00 Heating, Ventilating, and Air Conditioning (HVAC)	Count	
Material	Furnace	23 00 00 Heating, Ventilating, and Air Conditioning (HVAC)	Material	
Labor	Furnace	23 00 00 Heating, Ventilating, and Air Conditioning (HVAC)	Labor	
AC Unit		23 00 00 Heating, Ventilating, and Air Conditioning (HVAC)	Count	
Material	AC Unit	23 00 00 Heating, Ventilating, and Air Conditioning (HVAC)	Material	
Labor	AC Unit	23 00 00 Heating, Ventilating, and Air Conditioning (HVAC)	Labor	
Thermostat		23 00 00 Heating, Ventilating, and Air Conditioning (HVAC)	Count	
Material	Thermostat	23 00 00 Heating, Ventilating, and Air Conditioning (HVAC)	Material	
Labor	Thermostat	23 00 00 Heating, Ventilating, and Air Conditioning (HVAC)	Labor	
Registers		23 00 00 Heating, Ventilating, and Air Conditioning (HVAC)	Count	
Material	Registers	23 00 00 Heating, Ventilating, and Air Conditioning (HVAC)	Material	
Labor	Registers	23 00 00 Heating, Ventilating, and Air Conditioning (HVAC)	Labor	
Vents		23 00 00 Heating, Ventilating, and Air Conditioning (HVAC)	Count	
Material	Vents	23 00 00 Heating, Ventilating, and Air Conditioning (HVAC)	Material	
Labor	Vents	23 00 00 Heating, Ventilating, and Air Conditioning (HVAC)	Labor	
Advanced Assemblies			Folder	
Rectangular HVAC Duct		23 00 00 Heating, Ventilating, and Air Conditioning (HVAC)	Linear	
14" x 10" Rectangular Duct		23 00 00 Heating, Ventilating, and Air Conditioning (HVAC)	Material	
Insulation		23 00 00 Heating, Ventilating, and Air Conditioning (HVAC)	Material	
Ductwork Labor		23 00 00 Heating, Ventilating, and Air Conditioning (HVAC)	Labor	
4 Way Supply Register		23 00 00 Heating, Ventilating, and Air Conditioning (HVAC)	Count	
4 Way Supply Register		23 00 00 Heating, Ventilating, and Air Conditioning (HVAC)	Material	
Register Labor		23 00 00 Heating, Ventilating, and Air Conditioning (HVAC)	Labor	
Lump Sum Costs			Folder	
HVAC		23 00 00 Heating, Ventilating, and Air Conditioning (HVAC)	Subcontract	
Scissor Lift		23 00 00 Heating, Ventilating, and Air Conditioning (HVAC)	Equipment	
Man Lift		23 00 00 Heating, Ventilating, and Air Conditioning (HVAC)	Equipment	
Labor		23 00 00 Heating, Ventilating, and Air Conditioning (HVAC)	Labor	
Allowance		23 00 00 Heating, Ventilating, and Air Conditioning (HVAC)	Other	

General Contractor – 25 Integrated Automation

Name	Description	Division	Type	Color
25 Integrated Automation			Folder	Black
Basic Assemblies			Folder	Black
Integrated Automation Equipment		25 00 00 Integrated Automation	Count	Red
Material	Integrated Automation Equipment	25 00 00 Integrated Automation	Material	
Labor	Integrated Automation Equipment	25 00 00 Integrated Automation	Labor	
Lump Sum Costs			Folder	Black
Integrated Automation System		25 00 00 Integrated Automation	Subcontract	
Labor		25 00 00 Integrated Automation	Labor	
Allowance		25 00 00 Integrated Automation	Other	

General Contractor – 26 Electrical

Name	Description	Division	Type	Color
26 Electrical			Folder	Black
Basic Assemblies			Folder	Black
Electrical		26 00 00 Electrical	Area	Blue
Material	Electrical	26 00 00 Electrical	Material	
Labor	Electrical	26 00 00 Electrical	Labor	
Wiring		26 00 00 Electrical	Segment	Yellow
Material	Wiring	26 00 00 Electrical	Material	
Labor	Wiring	26 00 00 Electrical	Labor	
Wiring w/ Conduit		26 00 00 Electrical	Segment	Green
Material	Wiring w/ Conduit	26 00 00 Electrical	Material	
Labor	Wiring w/ Conduit	26 00 00 Electrical	Labor	
Light Fixture		26 00 00 Electrical	Count	Red
Material	Light Fixture	26 00 00 Electrical	Material	
Labor	Light Fixture	26 00 00 Electrical	Labor	
Speaker		26 00 00 Electrical	Count	Teal
Material	Speaker	26 00 00 Electrical	Material	
Labor	Speaker	26 00 00 Electrical	Labor	
Exit Fixture		26 00 00 Electrical	Count	Purple
Material	Exit Fixture	26 00 00 Electrical	Material	
Labor	Exit Fixture	26 00 00 Electrical	Labor	
Emergency Light Fixture		26 00 00 Electrical	Count	Blue
Material	Emergency Light Fixture	26 00 00 Electrical	Material	
Labor	Emergency Light Fixture	26 00 00 Electrical	Labor	
Smoke Detector		26 00 00 Electrical	Count	Olive
Material	Smoke Detector	26 00 00 Electrical	Material	
Labor	Smoke Detector	26 00 00 Electrical	Labor	
Strobe/Horn		26 00 00 Electrical	Count	Green
Material	Strobe/Horn	26 00 00 Electrical	Material	
Labor	Strobe/Horn	26 00 00 Electrical	Labor	
Speaker		26 00 00 Electrical	Count	Red
Material	Speaker	26 00 00 Electrical	Material	
Labor	Speaker	26 00 00 Electrical	Labor	

General Contractor – 26 Electrical -- Continued

Name	Description	Division	Type	Color
Single Pole Switch		26 00 00 Electrical	Count	
Material	Single Pole Switch	26 00 00 Electrical	Material	
Labor	Single Pole Switch	26 00 00 Electrical	Labor	
Double Pole Switch		26 00 00 Electrical	Count	
Material	Double Pole Switch	26 00 00 Electrical	Material	
Labor	Double Pole Switch	26 00 00 Electrical	Labor	
Three-Way Switch		26 00 00 Electrical	Count	
Material	Three-Way Switch	26 00 00 Electrical	Material	
Labor	Three-Way Switch	26 00 00 Electrical	Labor	
Four-Way Switch		26 00 00 Electrical	Count	
Material	Four-Way Switch	26 00 00 Electrical	Material	
Labor	Four-Way Switch	26 00 00 Electrical	Labor	
Duplex Outlet		26 00 00 Electrical	Count	
Material	Duplex Outlet	26 00 00 Electrical	Material	
Labor	Duplex Outlet	26 00 00 Electrical	Labor	
Fourplex Outlet		26 00 00 Electrical	Count	
Material	Fourplex Outlet	26 00 00 Electrical	Material	
Labor	Fourplex Outlet	26 00 00 Electrical	Labor	
Data Outlet		26 00 00 Electrical	Count	
Material	Data Outlet	26 00 00 Electrical	Material	
Labor	Data Outlet	26 00 00 Electrical	Labor	
Telephone Outlet		26 00 00 Electrical	Count	
Material	Telephone Outlet	26 00 00 Electrical	Material	
Labor	Telephone Outlet	26 00 00 Electrical	Labor	
Panelboard		26 00 00 Electrical	Count	
Material	Panelboard	26 00 00 Electrical	Material	
Labor	Panelboard	26 00 00 Electrical	Labor	
Transformer		26 00 00 Electrical	Count	
Material	Transformer	26 00 00 Electrical	Material	
Labor	Transformer	26 00 00 Electrical	Labor	
Telephone Terminal Board		26 00 00 Electrical	Count	
Material	Telephone Terminal Board	26 00 00 Electrical	Material	
Labor	Telephone Terminal Board	26 00 00 Electrical	Labor	
Advanced Assemblies			Folder	
Wiring		26 00 00 Electrical	Linear	
12 ga. Copper Wire	50' per Roll	26 00 00 Electrical	Material	
Wire Install		26 00 00 Electrical	Labor	
Duplex Outlet		26 00 00 Electrical	Count	
Duplex Receptade		26 00 00 Electrical	Material	
Metal Box - Single Gang		26 00 00 Electrical	Material	
Face Plate		26 00 00 Electrical	Material	
Outlet Instal		26 00 00 Electrical	Labor	
Lump Sum Costs			Folder	
Electrical		26 00 00 Electrical	Subcontract	
Scissor Lift		26 00 00 Electrical	Equipment	
Man Lift		26 00 00 Electrical	Equipment	
Labor		26 00 00 Electrical	Labor	
Allowance		26 00 00 Electrical	Other	

General Contractor – 27 Communications

Name	Description	Division	Type	Color
27 Communications			Folder	
Basic Assemblies			Folder	
Data Communication System		27 00 00 Communications	Area	
Material	Data Communication System	27 00 00 Communications	Material	
Labor	Data Communication System	27 00 00 Communications	Labor	
Audio Video Systems		27 00 00 Communications	Area	
Material	Audio Video Systems	27 00 00 Communications	Material	
Labor	Audio Video Systems	27 00 00 Communications	Labor	
Voice Communication System		27 00 00 Communications	Area	
Material	Voice Communication System	27 00 00 Communications	Material	
Labor	Voice Communication System	27 00 00 Communications	Labor	
Cabling		27 00 00 Communications	Segment	
Material	Cabling	27 00 00 Communications	Material	
Labor	Cabling	27 00 00 Communications	Labor	
Data Communication System		27 00 00 Communications	Count	
Material	Data Communication System	27 00 00 Communications	Material	
Labor	Data Communication System	27 00 00 Communications	Labor	
Voice Communication System		27 00 00 Communications	Count	
Material	Voice Communication System	27 00 00 Communications	Material	
Labor	Voice Communication System	27 00 00 Communications	Labor	
Audio Video System		27 00 00 Communications	Count	
Material	Audio Video System	27 00 00 Communications	Material	
Labor	Audio Video System	27 00 00 Communications	Labor	
Lump Sum Costs			Folder	
Audio/Video System		27 00 00 Communications	Subcontract	
Communication System		27 00 00 Communications	Subcontract	
Labor		27 00 00 Communications	Labor	
Allowance		27 00 00 Communications	Other	

General Contractor – 28 Electronic Safety and Security

Name	Description	Division	Type	Color
28 Electronic Safety and Security			Folder	Black
Basic Assemblies			Folder	Black
Fire Alarm System		28 00 00 Electronic Safety and Security	Area	Olive Green
Material	Fire Alarm System	28 00 00 Electronic Safety and Security	Material	
Labor	Fire Alarm System	28 00 00 Electronic Safety and Security	Labor	
Electronic Surveillance System		28 00 00 Electronic Safety and Security	Area	Green
Material	Electronic Surveillance System	28 00 00 Electronic Safety and Security	Material	
Labor	Electronic Surveillance System	28 00 00 Electronic Safety and Security	Labor	
Access Control System		28 00 00 Electronic Safety and Security	Area	Red
Material	Access Control System	28 00 00 Electronic Safety and Security	Material	
Labor	Access Control System	28 00 00 Electronic Safety and Security	Labor	
Intrusion Detection System		28 00 00 Electronic Safety and Security	Area	Cyan
Material	Intrusion Detection System	28 00 00 Electronic Safety and Security	Material	
Labor	Intrusion Detection System	28 00 00 Electronic Safety and Security	Labor	
Access Control Unit		28 00 00 Electronic Safety and Security	Count	Magenta
Material	Access Control Unit	28 00 00 Electronic Safety and Security	Material	
Labor	Access Control Unit	28 00 00 Electronic Safety and Security	Labor	
Video Surveillance Camera		28 00 00 Electronic Safety and Security	Count	Blue
Material	Video Surveillance Camera	28 00 00 Electronic Safety and Security	Material	
Labor	Video Surveillance Camera	28 00 00 Electronic Safety and Security	Labor	
Smoke Detector		28 00 00 Electronic Safety and Security	Count	Yellow
Material	Smoke Detector	28 00 00 Electronic Safety and Security	Material	
Labor	Smoke Detector	28 00 00 Electronic Safety and Security	Labor	
Gas Detector		28 00 00 Electronic Safety and Security	Count	Light Green
Material	Gas Detector	28 00 00 Electronic Safety and Security	Material	
Labor	Gas Detector	28 00 00 Electronic Safety and Security	Labor	
Lump Sum Costs			Folder	Black
Security System		28 00 00 Electronic Safety and Security	Subcontract	
Fire Alarm System		28 00 00 Electronic Safety and Security	Subcontract	
Labor		28 00 00 Electronic Safety and Security	Labor	
Allowance		28 00 00 Electronic Safety and Security	Other	

General Contractor – 31 Earthwork

Name	Description	Division	Type	Color
31 Earthwork			Folder	Black
Basic Assemblies			Folder	Black
Grading		31 00 00 Earthwork	Area	Yellow
Material	Grading	31 00 00 Earthwork	Material	
Labor	Grading	31 00 00 Earthwork	Labor	
Excavation		31 00 00 Earthwork	Area	Green
Material	Excavation	31 00 00 Earthwork	Material	
Labor	Excavation	31 00 00 Earthwork	Labor	
Site Clearing		31 00 00 Earthwork	Area	Red
Material	Site Clearing	31 00 00 Earthwork	Material	
Labor	Site Clearing	31 00 00 Earthwork	Labor	
Soil Treatment		31 00 00 Earthwork	Area	Teal
Material	Soil Treatment	31 00 00 Earthwork	Material	
Labor	Soil Treatment	31 00 00 Earthwork	Labor	
Trenching		31 00 00 Earthwork	Linear	Purple
Material	Trenching	31 00 00 Earthwork	Material	
Labor	Trenching	31 00 00 Earthwork	Labor	
Retaining Wall		31 00 00 Earthwork	Linear	Blue
Material	Retaining Wall	31 00 00 Earthwork	Material	
Labor	Retaining Wall	31 00 00 Earthwork	Labor	
Lump Sum Costs			Folder	Black
Earthwork		31 00 00 Earthwork	Subcontract	
Back Hoe		31 00 00 Earthwork	Equipment	
Track Hoe		31 00 00 Earthwork	Equipment	
Skid Steer		31 00 00 Earthwork	Equipment	
Dump Truck		31 00 00 Earthwork	Equipment	
Dump Trailer		31 00 00 Earthwork	Equipment	
Labor		31 00 00 Earthwork	Labor	
Allowance		31 00 00 Earthwork	Other	

General Contractor – 32 Exterior Improvements

Name	Description	Division	Type	Color
32 Exterior Improvements			Folder	
Basic Assemblies			Folder	
Landscaping		32 00 00 Exterior Improvements	Area	
Material	Landscaping	32 00 00 Exterior Improvements	Material	
Labor	Landscaping	32 00 00 Exterior Improvements	Labor	
Paving		32 00 00 Exterior Improvements	Area	
Material	Paving	32 00 00 Exterior Improvements	Material	
Labor	Paving	32 00 00 Exterior Improvements	Labor	
Concrete Flatwork		32 00 00 Exterior Improvements	Area	
Material	Concrete Flatwork	32 00 00 Exterior Improvements	Material	
Labor	Concrete Flatwork	32 00 00 Exterior Improvements	Labor	
Aggregate Surfacing		32 00 00 Exterior Improvements	Area	
Material	Aggregate Surfacing	32 00 00 Exterior Improvements	Material	
Labor	Aggregate Surfacing	32 00 00 Exterior Improvements	Labor	
Sod		32 00 00 Exterior Improvements	Area	
Material	Sod	32 00 00 Exterior Improvements	Material	
Labor	Sod	32 00 00 Exterior Improvements	Labor	
Hydroseed		32 00 00 Exterior Improvements	Area	
Material	Hydroseed	32 00 00 Exterior Improvements	Material	
Labor	Hydroseed	32 00 00 Exterior Improvements	Labor	
Curbing		32 00 00 Exterior Improvements	Linear	
Material	Curbing	32 00 00 Exterior Improvements	Material	
Labor	Curbing	32 00 00 Exterior Improvements	Labor	
Sidewalk		32 00 00 Exterior Improvements	Linear	
Material	Sidewalk	32 00 00 Exterior Improvements	Material	
Labor	Sidewalk	32 00 00 Exterior Improvements	Labor	
Retaining Wall		32 00 00 Exterior Improvements	Linear	
Material	Retaining Wall	32 00 00 Exterior Improvements	Material	
Labor	Retaining Wall	32 00 00 Exterior Improvements	Labor	
Curb and Gutter		32 00 00 Exterior Improvements	Linear	
Material	Curb and Gutter	32 00 00 Exterior Improvements	Material	
Labor	Curb and Gutter	32 00 00 Exterior Improvements	Labor	
Landscaping		32 00 00 Exterior Improvements	Area	
Material	Landscaping	32 00 00 Exterior Improvements	Material	
Labor	Landscaping	32 00 00 Exterior Improvements	Labor	
Fencing		32 00 00 Exterior Improvements	Linear	
Material	Fencing	32 00 00 Exterior Improvements	Material	
Labor	Fencing	32 00 00 Exterior Improvements	Labor	
Landscaping		32 00 00 Exterior Improvements	Area	
Material	Landscaping	32 00 00 Exterior Improvements	Material	
Labor	Landscaping	32 00 00 Exterior Improvements	Labor	
Gate		32 00 00 Exterior Improvements	Count	
Material	Gate	32 00 00 Exterior Improvements	Material	
Labor	Gate	32 00 00 Exterior Improvements	Labor	
Plant		32 00 00 Exterior Improvements	Count	
Material	Plant	32 00 00 Exterior Improvements	Material	
Labor	Plant	32 00 00 Exterior Improvements	Labor	
Tree		32 00 00 Exterior Improvements	Count	
Material	Tree	32 00 00 Exterior Improvements	Material	
Labor	Tree	32 00 00 Exterior Improvements	Labor	

General Contractor – 32 Exterior Improvements -- Continued

Name	Description	Division	Type	Color
Advanced Assemblies			Folder	
Asphalt Paving w/ Road Base		32 00 00 Exterior Improvements	Area	
HD Asphalt		32 00 00 Exterior Improvements	Material	
Road Base		32 00 00 Exterior Improvements	Material	
Paving Labor		32 00 00 Exterior Improvements	Labor	
Gravel		32 00 00 Exterior Improvements	Area	
1" Gravel		32 00 00 Exterior Improvements	Material	
Grading Labor		32 00 00 Exterior Improvements	Labor	
Sod		32 00 00 Exterior Improvements	Area	
Sod		32 00 00 Exterior Improvements	Material	
Topsoil Layer		32 00 00 Exterior Improvements	Material	
Fertilizer		32 00 00 Exterior Improvements	Material	
Sod Labor		32 00 00 Exterior Improvements	Labor	
5 Gal. Shrub		32 00 00 Exterior Improvements	Count	
Shrub	5 Gal Shrub	32 00 00 Exterior Improvements	Material	
Shrub Labor		32 00 00 Exterior Improvements	Labor	
Lump Sum Costs			Folder	
Landscaping		32 00 00 Exterior Improvements	Subcontract	
Paving		32 00 00 Exterior Improvements	Subcontract	
Track Hoe		32 00 00 Exterior Improvements	Equipment	
Mini Ex		32 00 00 Exterior Improvements	Equipment	
Back Hoe		32 00 00 Exterior Improvements	Equipment	
Front End Loader		32 00 00 Exterior Improvements	Equipment	
Dump Truck		32 00 00 Exterior Improvements	Equipment	
Dump Trailer		32 00 00 Exterior Improvements	Equipment	
Labor		32 00 00 Exterior Improvements	Labor	
Allowance		32 00 00 Exterior Improvements	Other	

General Contractor – 33 Utilities

Name	Description	Division	Type	Color
33 Utilities			Folder	
Basic Assemblies			Folder	
Storm Drain		33 00 00 Utilities	Segment	
Material	Storm Drain	33 00 00 Utilities	Material	
Labor	Storm Drain	33 00 00 Utilities	Labor	
Sewer		33 00 00 Utilities	Segment	
Material	Sewer	33 00 00 Utilities	Material	
Labor	Sewer	33 00 00 Utilities	Labor	
Water		33 00 00 Utilities	Segment	
Material	Water	33 00 00 Utilities	Material	
Labor	Water	33 00 00 Utilities	Labor	
Gas		33 00 00 Utilities	Segment	
Material	Gas	33 00 00 Utilities	Material	
Labor	Gas	33 00 00 Utilities	Labor	
Power		33 00 00 Utilities	Segment	
Material	Power	33 00 00 Utilities	Material	
Labor	Power	33 00 00 Utilities	Labor	
Catch Basin		33 00 00 Utilities	Count	
Material	Catch Basin	33 00 00 Utilities	Material	
Labor	Catch Basin	33 00 00 Utilities	Labor	
Septic Tank		33 00 00 Utilities	Count	
Material	Septic Tank	33 00 00 Utilities	Material	
Labor	Septic Tank	33 00 00 Utilities	Labor	
Transformer		33 00 00 Utilities	Count	
Material	Transformer	33 00 00 Utilities	Material	
Labor	Transformer	33 00 00 Utilities	Labor	
Well		33 00 00 Utilities	Count	
Material	Well	33 00 00 Utilities	Material	
Labor	Well	33 00 00 Utilities	Labor	
Fuel Storage Tank		33 00 00 Utilities	Count	
Material	Fuel Storage Tank	33 00 00 Utilities	Material	
Labor	Fuel Storage Tank	33 00 00 Utilities	Labor	
Advanced Assemblies			Folder	
4" PVC SDR 35		33 00 00 Utilities	Linear	
4" x 20' PVC SDR 35		33 00 00 Utilities	Material	
Pipe Laying Labor		33 00 00 Utilities	Labor	
4x4 TEE SCH 40 PVC G x G		33 00 00 Utilities	Count	
4x4 TEE SCH 40 PVC G x G		33 00 00 Utilities	Material	
Fitting Installation Labor		33 00 00 Utilities	Labor	
4" Butterfly Valve		33 00 00 Utilities	Count	
4" Butterfly Valve		33 00 00 Utilities	Material	
Valve Installation Labor		33 00 00 Utilities	Labor	
4" Cleanout		33 00 00 Utilities	Count	
4" Cleanout		33 00 00 Utilities	Material	
Cleanout Install Labor		33 00 00 Utilities	Labor	
10" x 10" X 12" Catch Basin		33 00 00 Utilities	Count	
10" x 10" X 12" Catch Basin		33 00 00 Utilities	Material	
Catch Basin Install Labor		33 00 00 Utilities	Labor	
48" Manhole		33 00 00 Utilities	Count	
48" Dia. x 36" H Round Base		33 00 00 Utilities	Material	
48" Dia. x 24" H Round Riser		33 00 00 Utilities	Material	
48" Dia. Cone Roof w/ 24" Concentric Opening		33 00 00 Utilities	Material	
24" x 3" Grade Ring		33 00 00 Utilities	Material	
24" Ring and Cover		33 00 00 Utilities	Material	
Manhole Installation Labor		33 00 00 Utilities	Labor	
Lump Sum Costs			Folder	
Utilities		33 00 00 Utilities	Subcontract	
Track Hoe		33 00 00 Utilities	Equipment	
Mini Ex		33 00 00 Utilities	Equipment	
Back Hoe		33 00 00 Utilities	Equipment	
Labor		33 00 00 Utilities	Labor	
Allowance		33 00 00 Utilities	Other	

General Contractor – Integrated Advanced Assemblies

Name	Description	Division	Type	Color
Integrated Advanced Assemblies			Folder	
Complete Wall Assembly			Linear	
Concrete			Assembly	
Concrete		03 00 00 Concrete	Material	
#4 Rebar		03 00 00 Concrete	Material	
#4 Rebar		03 00 00 Concrete	Material	
5/8" Anchor Bolts		03 00 00 Concrete	Material	
Concrete Labor		03 00 00 Concrete	Labor	
Framing			Assembly	
2x6x10 4-5/8" Studs		06 00 00 Wood, Plastics, and Composites	Material	
2x6x16'		06 00 00 Wood, Plastics, and Composites	Material	
2x6x16' Pressure Treated		06 00 00 Wood, Plastics, and Composites	Material	
1/2" 4'x9' OSB		06 00 00 Wood, Plastics, and Composites	Material	
Framing Labor		06 00 00 Wood, Plastics, and Composites	Labor	
Drywall			Assembly	
1/2" Mold and Moisture Resistant 4.5x12 Drywall		09 00 00 Finishes	Material	
Joint Tape		09 00 00 Finishes	Material	
Joint Compound		09 00 00 Finishes	Material	
Drywall Screws		09 00 00 Finishes	Material	
Drywall Labor		09 00 00 Finishes	Labor	
Finish Carpentry			Assembly	
8'- 4" MDF Base		09 00 00 Finishes	Material	
8'- 3/4"x4-1/2" MDF		09 00 00 Finishes	Material	
Finish Carpenter Labor		09 00 00 Finishes	Labor	
Insulation			Assembly	
R-19 Insulation		07 00 00 Thermal and Moisture Protection	Material	
Insulation Labor		07 00 00 Thermal and Moisture Protection	Labor	
Paint			Assembly	
Finish Paint		09 00 00 Finishes	Material	
Primer		09 00 00 Finishes	Material	
Paint Labor		09 00 00 Finishes	Labor	
Complete Floor/Ceiling Assembly			Area	
Concrete		03 00 00 Concrete	Assembly	
Concrete	4" Thick 4000 PSI	03 00 00 Concrete	Material	
#4 Rebar	#4 Rebar, 0.668 LBS/FT	03 00 00 Concrete	Material	
1" Gravel	4" Thick, Weight 3800 LBS/CUYD	03 00 00 Concrete	Material	
15 mil Vapor Barrier	20' x 100' Roll	03 00 00 Concrete	Material	
Concrete Labor	Priced per SQ FT	03 00 00 Concrete	Labor	
Framing		06 00 00 Wood, Plastics, and Composites	Assembly	
3/4" OSB T&G	4' x 8' Sheets	06 00 00 Wood, Plastics, and Composites	Material	
Subfloor Nails/Screws	Priced per Box	06 00 00 Wood, Plastics, and Composites	Material	
Subfloor Adhesive	Priced per Tube	06 00 00 Wood, Plastics, and Composites	Material	
Subfloor Labor	Priced per SQ FT	06 00 00 Wood, Plastics, and Composites	Labor	
11-7/8" TJI Joists	Priced per FT	06 00 00 Wood, Plastics, and Composites	Material	
Drywall		09 00 00 Finishes	Assembly	
1/2" Mold and Moisture Resistant	4' x 12' Sheets	09 00 00 Finishes	Material	
Joint Tape	250' Roll	09 00 00 Finishes	Material	
Joint Compound	4.5 Gal Joint Compound	09 00 00 Finishes	Material	
Drywall Screws		09 00 00 Finishes	Material	
Hanging Labor		09 00 00 Finishes	Labor	
Finish Labor		09 00 00 Finishes	Labor	
Flooring		09 00 00 Finishes	Assembly	
Tile Floor		09 00 00 Finishes	Material	
Tile Labor		09 00 00 Finishes	Labor	
Insulation		07 00 00 Thermal and Moisture Protection	Assembly	
R-30 Insulation	Coverage: 50 Sq Ft	07 00 00 Thermal and Moisture Protection	Material	
Insulation Labor		07 00 00 Thermal and Moisture Protection	Labor	
Paint		09 00 00 Finishes	Assembly	
Finish Paint	2 Coat(s), 280 SQ FT/Gallon	09 00 00 Finishes	Material	
Primer	1 Coat(s), SQ FT/Gallon	09 00 00 Finishes	Material	
Paint Labor		09 00 00 Finishes	Labor	