

Premier Roofing Plugin

User Guide

UPDATED ON 11/21/2018

PlanSwift

Authored by: Dave Hansen



Table of Contents

Overview	3
Purchasing and Installation	4
Purchasing Plugins.....	4
Installation and Uninstallation	4
Features.....	4
How To	5
How to: Copy and Paste an Assembly.....	5
How to: Copy and Paste Parts.....	10
How to: Drag and Drop Parts	15
FAQ.....	17
Compendium.....	18
PRP Residential Assemblies.....	18
PRP Residential Parts	45

Overview

This guide will teach you how to properly use the tools and features found within the Premier Roofing Plugin. It is designed for use with PlanSwift® Takeoff and Estimating Software. This guide is not meant to be a step-by-step “walk through” document, although it can be used as a reference for getting the work done. If you encounter technical difficulty, consult this guide (including the [FAQ](#) section of this user manual) or contact the technical support department at:

PlanSwift® Technical Support
support@PlanSwift.com
1-888-752-6794 ext. 2

PlanSwift also offers additional training. For training options, contact the training department at:

PlanSwift® Training Department
training@PlanSwift.com
1-888-752-6794 ext. 4

Purchasing and Installation

Purchasing Plugins

If you need to purchase PlanSwift or a plugin product, contact the Sales Department at:

PlanSwift® Sales
sales@PlanSwift.com
1-888-752-6794 Ext. 1

Installation and Uninstallation

Installing and uninstalling plugins is simple. For installing them, click on the Import Plugin Package icon (arrow 1 in Figure 1) from the PlanSwift Main Ribbon-bar **Plugin** tab (arrow 3 of Figure 1) and follow the prompts from there. For uninstalling, click on the Uninstall Plugin (arrow 2 in Figure 1) and follow those prompts.

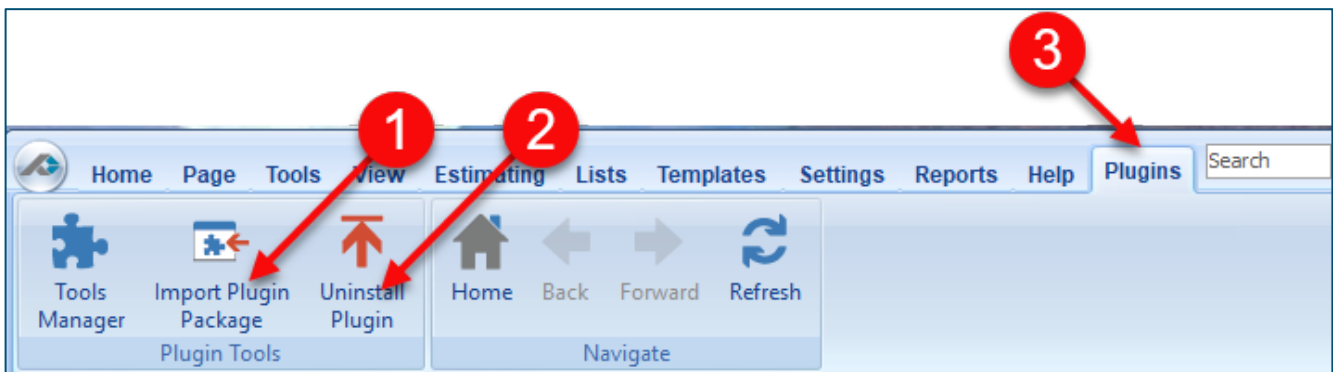


Figure 1

Features

The Premier Roofing Plugin includes [PRP Residential Assemblies](#) and [PRP Residential Parts](#) found in the Templates tab of PlanSwift. These are listed in the [Compendium](#) at the end of this guide. With these roofing assemblies and parts, PlanSwift users can easily customize assemblies and parts for later use. Plugins contain a large library of prebuilt templates, parts and assemblies. Modifying the library of parts and assemblies for any plugin allows users the ability to customize their Templates to their specific

needs. Users will save countless hours of setup by utilizing a plugin as their starting point for building custom parts and assemblies. The instructions below will guide new users through the basics of modifying parts and assemblies. We highly recommend purchasing a training package for accelerated learning and faster customization.

How To

How to: Copy and Paste an Assembly

The purpose of copying and pasting an assembly is to allow the user to copy and then modify the assembly for later use. As an example, you may want two different assemblies: one might include a part, and another might have an alternative part or not include that part at all. By copying one assembly and then modifying and renaming the copy (for easy identification), you can have two different assemblies available, allowing for easier and faster takeoffs. Figure 2 shows the **Templates Tab** (arrow 1) and the **Area Takeoff Item Example 1** assembly (arrow 2). If you want to add another assembly but with no **Material 3**, then you would click on the assembly you want to copy (arrow 2), click on **Copy** (arrow 3), and then click on **Paste** (arrow 4).

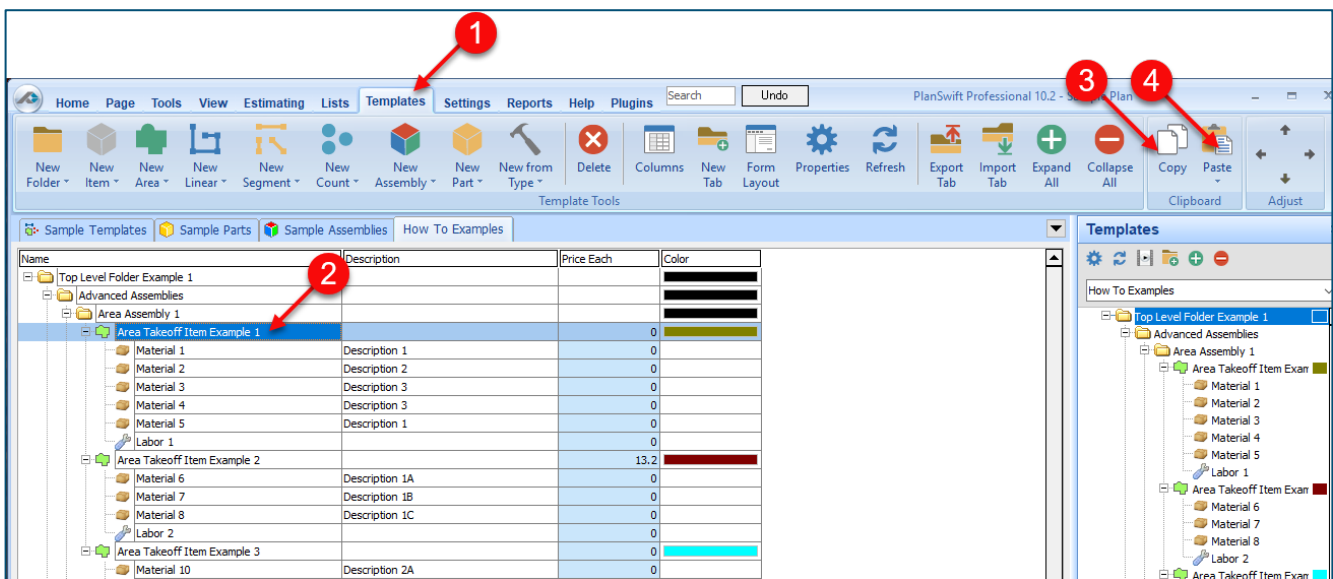


Figure 2

Figure 3 shows the original (arrows 1) and new **Area Takeoff Item Example 1** assembly (arrow 2). To delete the **Material 3** (arrow 3) from the newly created **Area Takeoff Item Example 1** assembly (arrow 2), click on **Material 3** (arrow 3), click on **Delete** (arrow 4), and click on **OK** in the popup window to confirm the deletion.

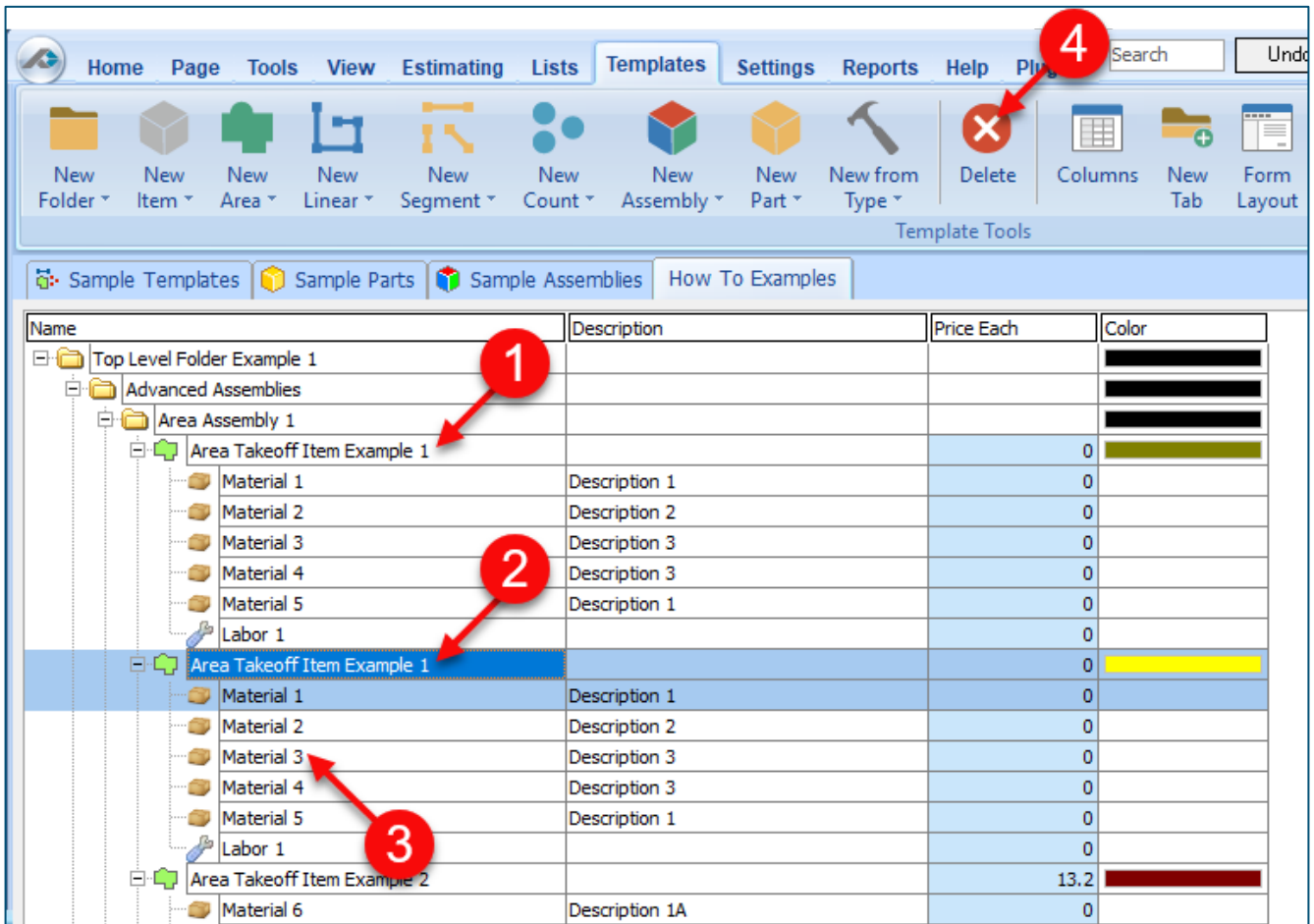


Figure 3

Figure 4 now shows the two assemblies, one with (arrow 1) and one without (arrow 2) the **Material 3** item. You can now change the description of the duplicated **Area Takeoff Item Example 1** (arrow 3) without the **Material 3** item by double-clicking the duplicate **Area Takeoff Item Example 1** (arrow 3).

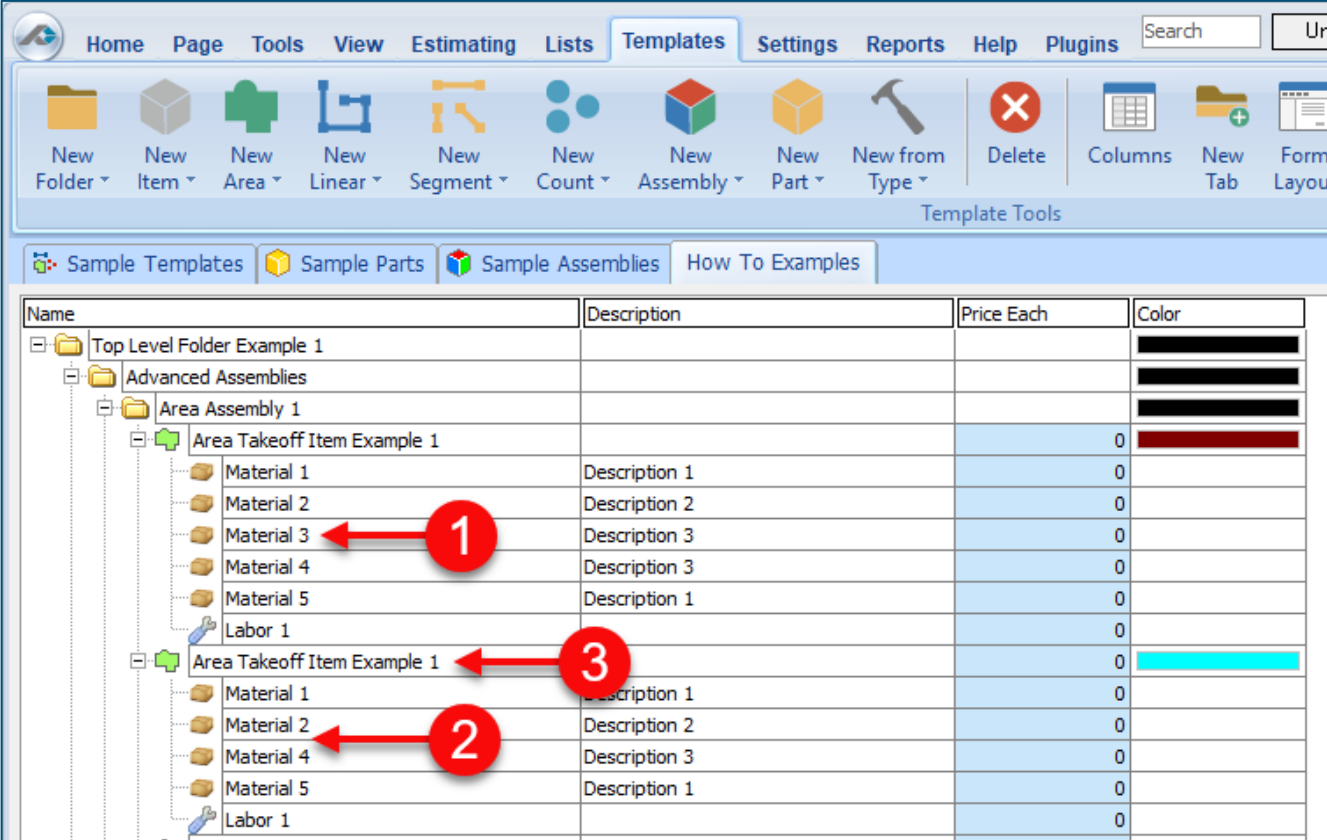


Figure 4

This opens the **Properties – [Area Takeoff Item Example 1]** window (Figure 5) where you can change the assembly’s name to something like **Area Takeoff Item Example 1—No Material 3** to make it easier to identify.

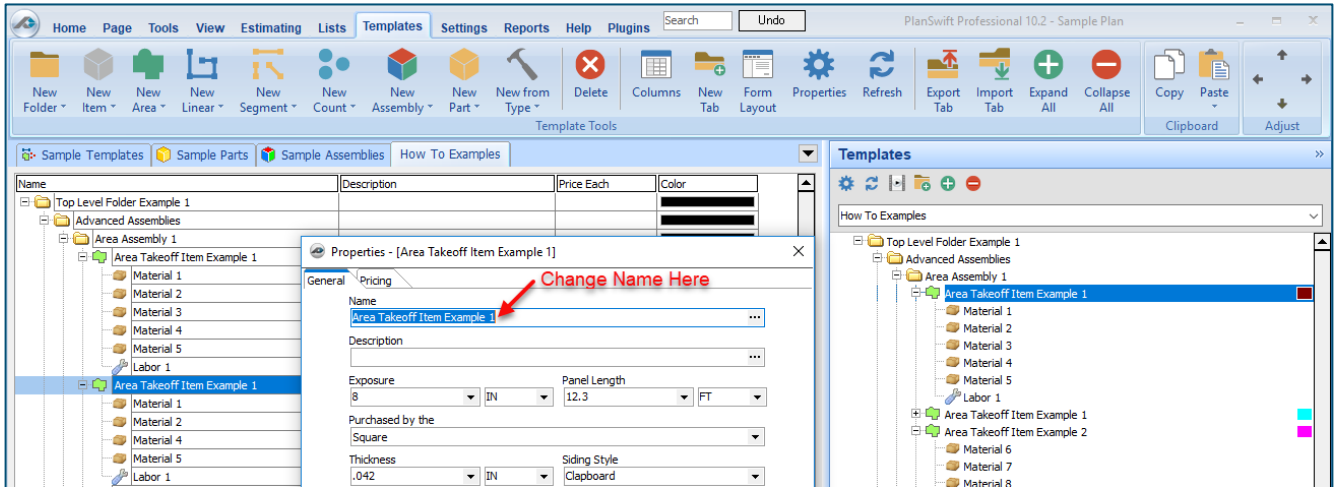


Figure 5

Click on **Ok** in the **Properties** window after you have entered the name. Figure 6 shows the new name.

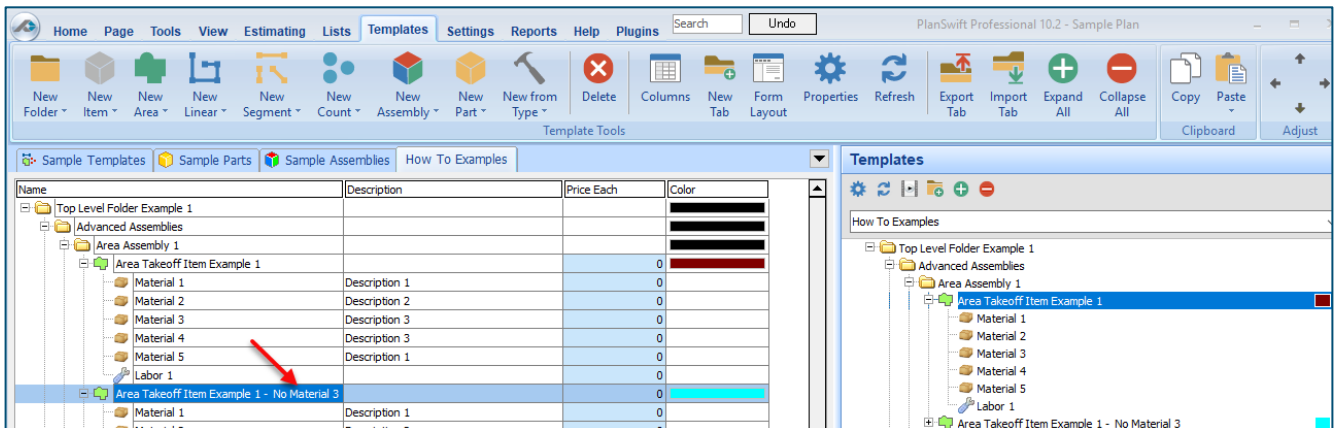


Figure 6

To perform a takeoff with the **Area Takeoff Item Example 1—No Material 3** assembly, go to the takeoff page, click on the green **Record Button** (see the arrow in Figure 7) in the **Templates** sidebar window, and then proceed to do your takeoff.

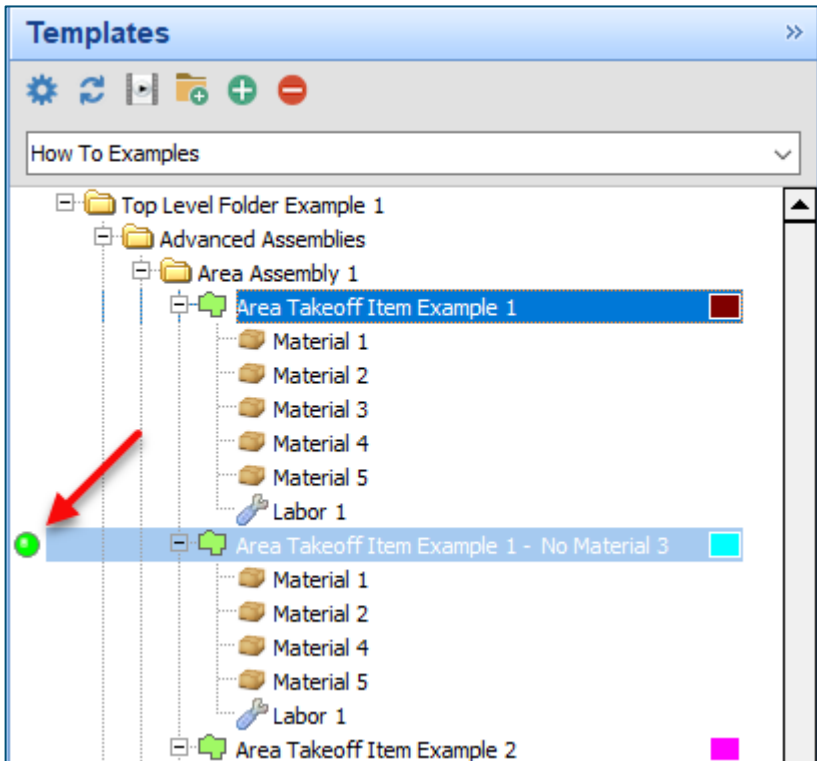


Figure 7

Disclaimer

Any modifications that a user makes to a Starter Pack should always be tested and verified by that user to ensure quantities and calculations are accurate. PlanSwift cannot verify the accuracy of modifications made to templates, parts and assemblies by the user.

How to: Copy and Paste Parts

Copying and pasting parts is handled similarly to copying and pasting an assembly. If, for instance, you want to move **Material 6** in **Area Takeoff Item Example 2** to **Area Takeoff Item Example 1**, click on **Material 6** (arrow 1), then click on copy (arrow 2) as shown in Figure 8.

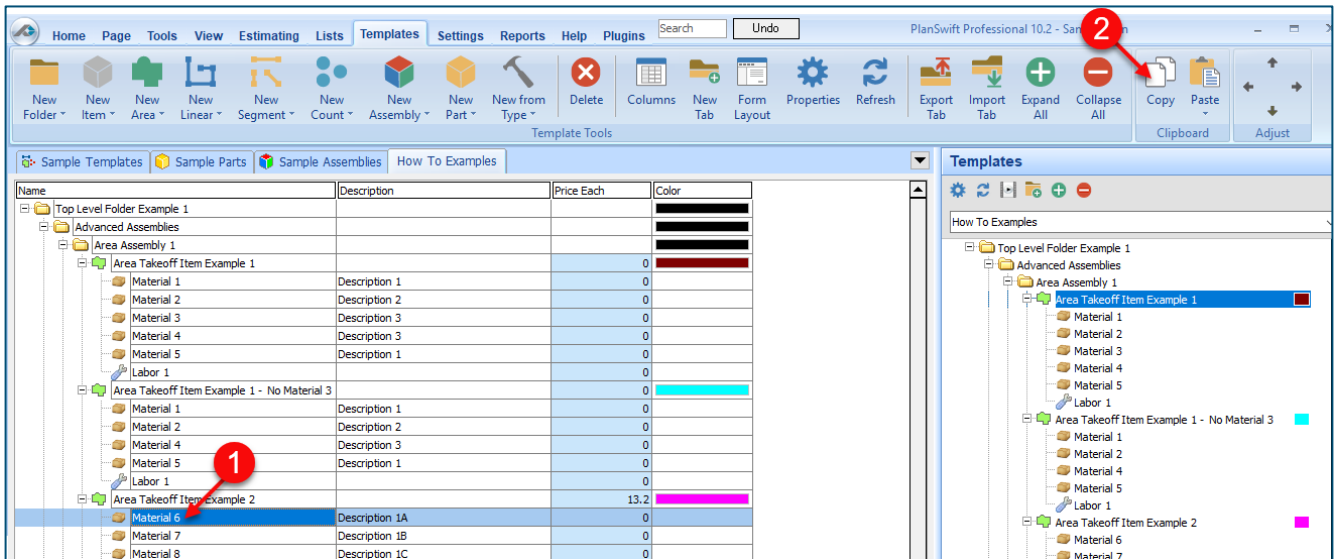


Figure 8

There are now two ways to paste the part. The first is to paste it at the same hierarchical level of a selected item, and the second is to paste it as a sub-item of a selected item. Figure 9 shows the **Paste** button. Clicking on the top half of the button pastes the part at the same hierarchical level of a selected item. Clicking on the drop-down half of the button, then selecting **As Sub-Item** pastes the part as a sub-item of the selected item.

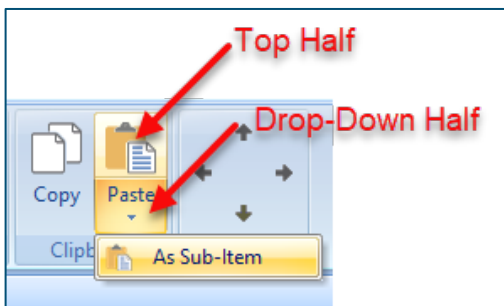


Figure 9

Click on **Area Takeoff Item Example 1**, then click on the top half of **Paste**. As shown in Figure 10, **Material 6** gets pasted at the same hierarchical level as **Area Takeoff Item Example 1**.

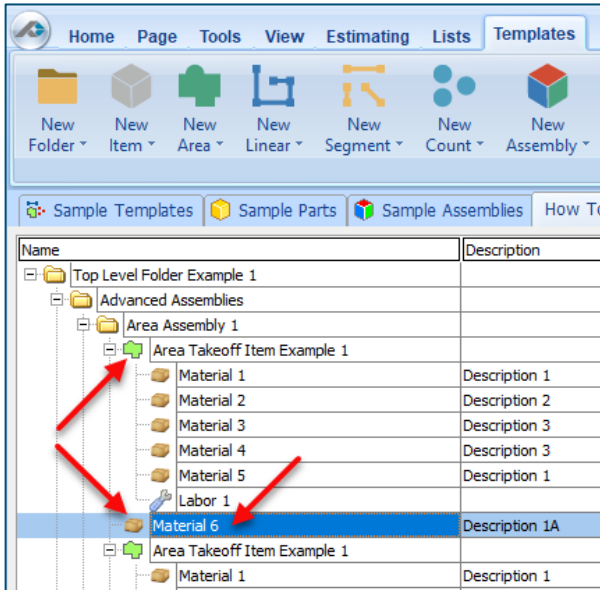


Figure 10

If you had selected the drop-down half of the **Paste** button, then **Material 6** would be a sub-item of **Area Takeoff Item Example 1**. Figure 11 shows **Material 6** as a sub-item.

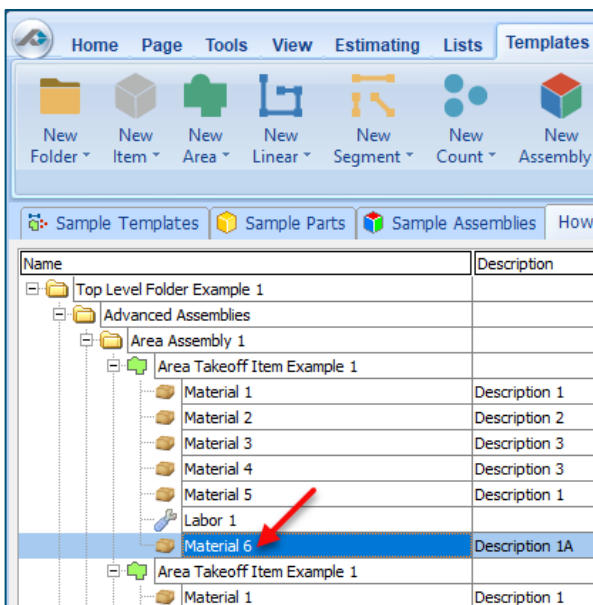


Figure 11

Another way to adjust the hierarchy of an item, such as **Material 6**, is to use the Main Ribbon bar arrow **Adjust** keys (Figure 12).

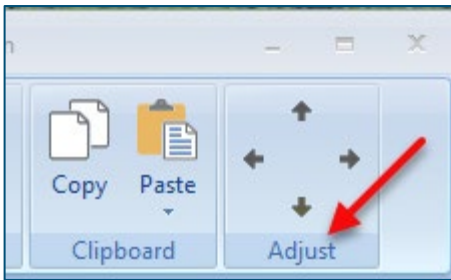


Figure 12

The left and right **Adjust** arrows move the item left and right (up or down) in the hierarchy, and the up and down **Adjust** arrows keys moves the item higher and lower in the list of items.

A shortcut to the **Copy** and **Paste** and **Paste as Sub-Item** selections is available with a right-click menu. Figure 13 shows the **Copy**, **Paste**, and **Paste As Sub-Item** options on the right-click menu when **Material 6** is right-clicked on.

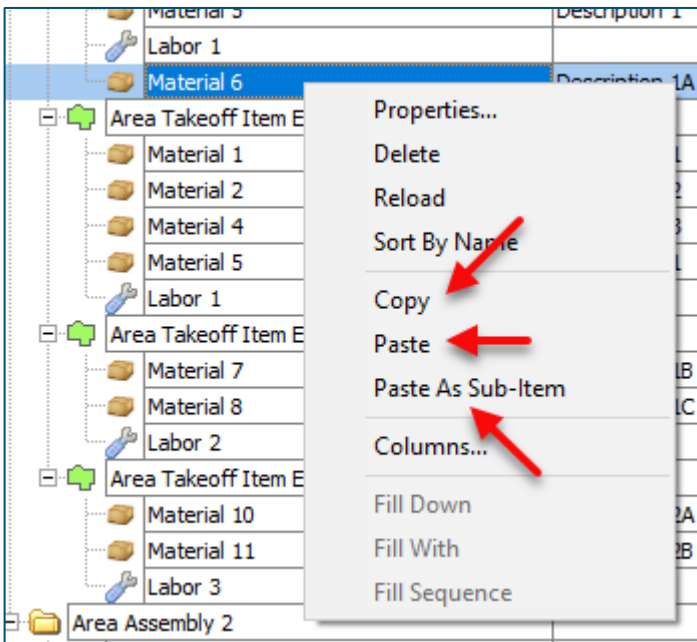


Figure 13

Double-clicking on **Material 6** allows you to change the name of the item and alter other properties of the item (Figure 14). To change the name of **Material 6**, double-click on the **Material 6** name, type the new name, and click on **Ok**.

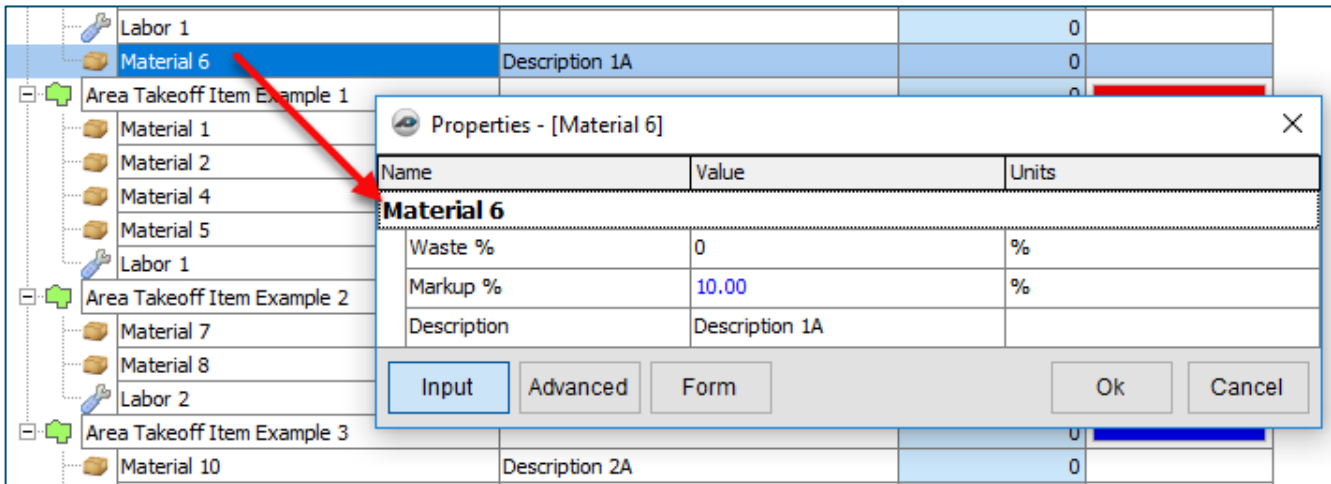


Figure 14

Figure 15 shows **Material 6** renamed to **Material 6A**.

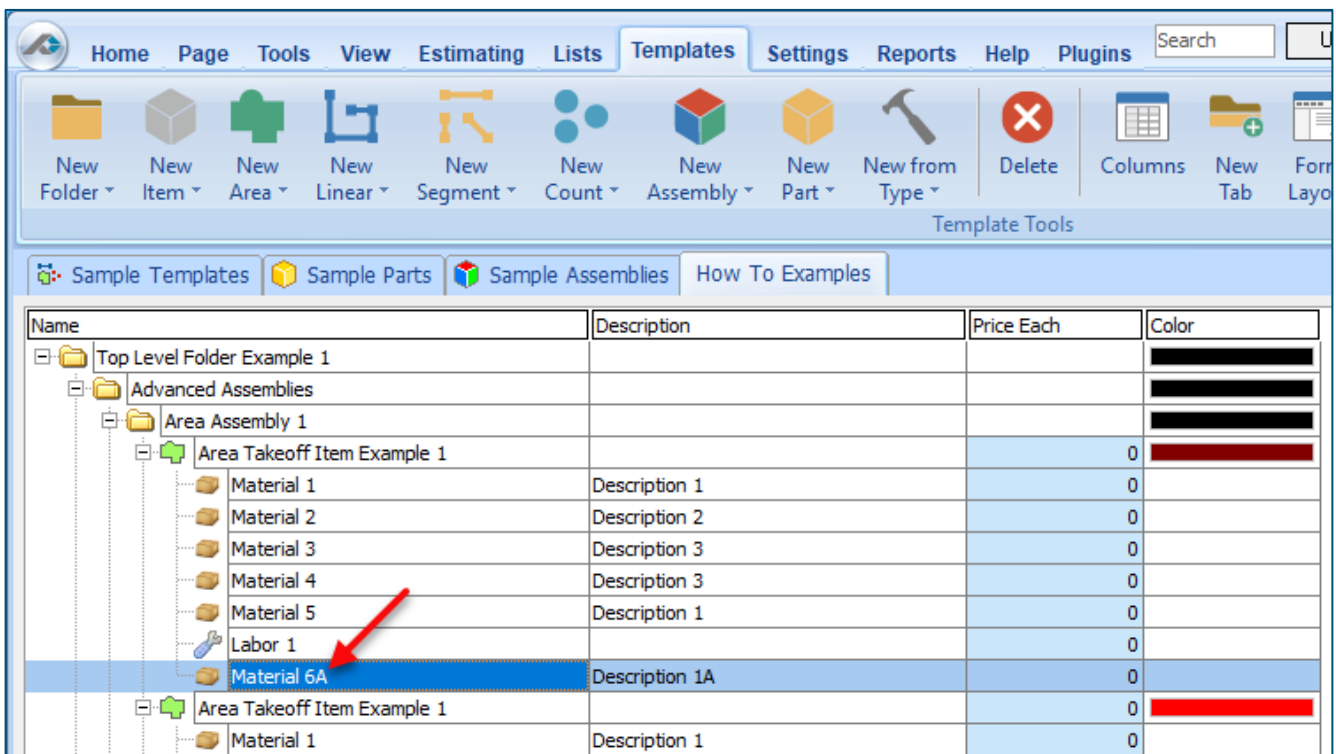


Figure 15

Disclaimer

Any modifications that a user makes to a Starter Pack should always be tested and verified by that user to ensure quantities and calculations are accurate. PlanSwift cannot verify the accuracy of modifications made to templates, parts and assemblies by the user.

How to: Drag and Drop Parts

Parts may be dragged and dropped from one assembly to another assembly. If, for instance, you want to drag the **Material 8** item from **Area Takeoff Item Example 2** up to **Area Takeoff Item Example 1**, click on **Material 8** and drag it up to just below **Material 6A** (see Figure 16) and release the mouse button.

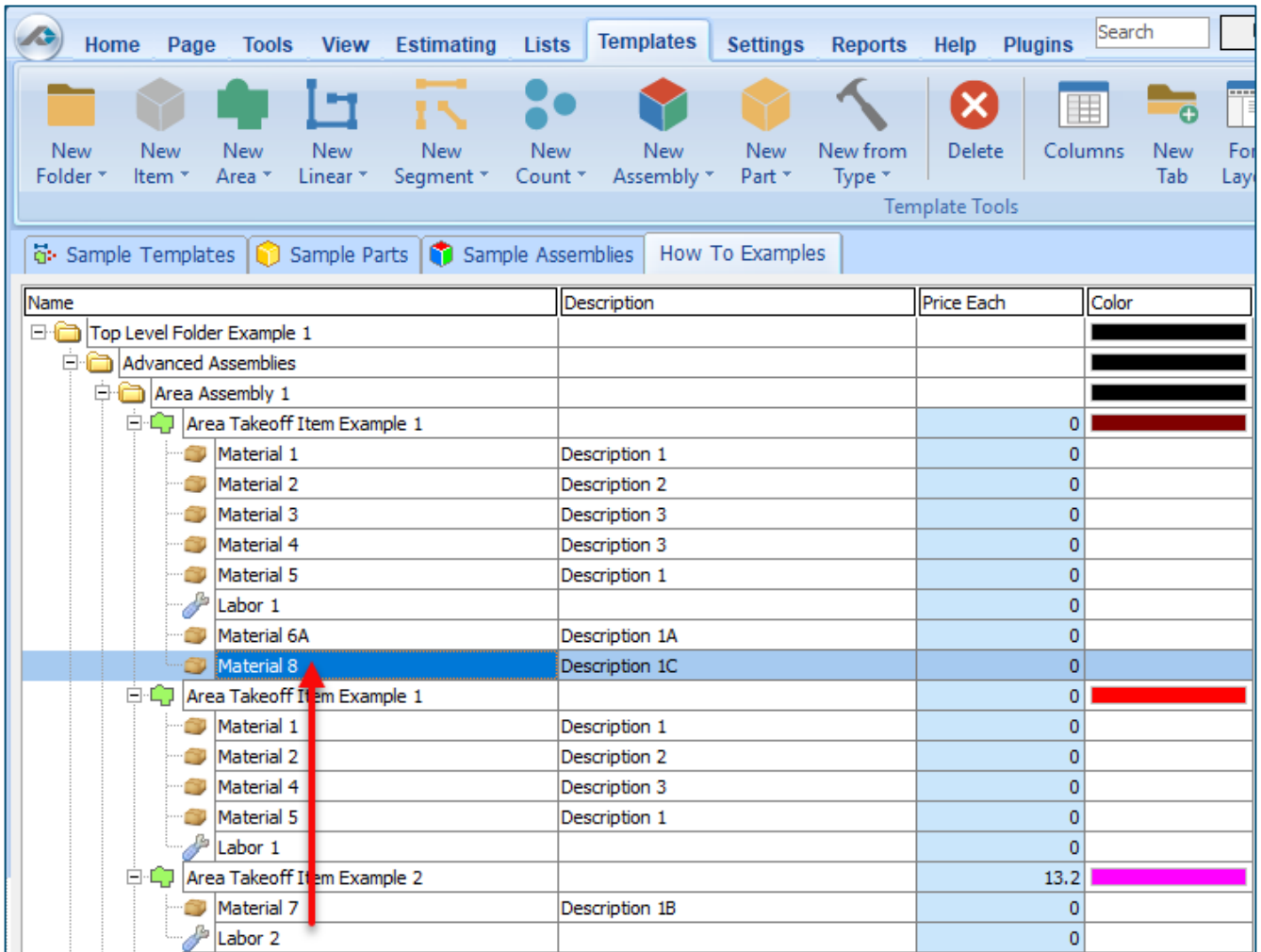


Figure 16

Notice that dragging the part this way *moves* the part from the **Example 2** assembly to the **Example 1** assembly, *not* leaving behind a copy.

The **Templates** sidebar window is a summarized view of everything in the Templates Tab. It is designed for easily dragging and dropping parts and for quickly launching takeoff templates and assemblies.

Parts may be dragged over from the **Templates** sidebar window into the **Templates Tab** window; note that dragging any part from the **Templates** sidebar window makes a copy of it. If, for instance, you want a **Material 7** item added to **Area Takeoff Item Example 1** as a sub-item, simply drag the **Material 7** from the right **Templates** sidebar window over on top of **Area Takeoff Item Example 1** label and release the mouse button. (Figure 17).

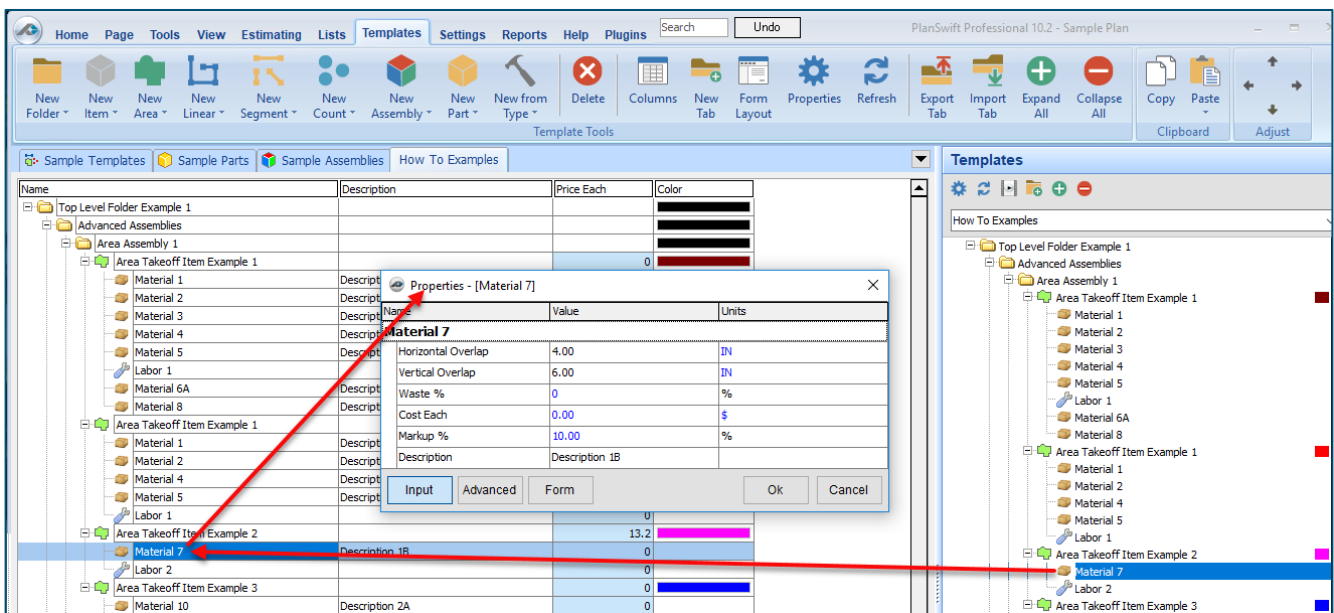


Figure 17

Figure 17 shows the **Material 7** item in place after it was dropped on top of **Area Takeoff Item Example 1**. In addition, the **Properties – [Material 7]** window automatically opens, allowing the user to change any properties for **Material 7**. Click on **Ok** to close the **Properties – [Material 7]** window.

Disclaimer

Any modifications that a user makes to a Starter Pack should always be tested and verified by that user to ensure quantities and calculations are accurate. PlanSwift cannot verify the accuracy of modifications made to templates, parts and assemblies by the user.

FAQ

Question: I've read this user guide, and I still have questions. What do I do?

Answer: PlanSwift recommends that you purchase a training package. We highly recommend new users purchase a training package, because training is customized to each user. We offer [one-on-one training](#) and [classroom training](#). Contact training@PlanSwift.com or at 1-888-752-6794 Ext. 4.

Question: Does the Plugin include everything a contractor will need to generate an estimate?

Answer: No. A Plugin is a tool to get you started toward creating a complete estimate. For example, the Plugin does not include industry pricing for materials and labor. However, you can supply prices for materials and labor on the assemblies and labor included in the Plugin.

Question: Do I have to input all the pricing for all my parts?

Answer: Inputting pricing is optional. You can use the Plugin to generate quantities that you can then send to your supplier, who can then provide you current pricing. Inputting pricing on your own is optional. If your industry's pricing is not subject to frequent changes, you may want to consider inputting your pricing in PlanSwift.

Compendium

PRP Residential Assemblies

Name	Description	Division	Type	Color
Area Takeoffs			Folder	
Plan View	Top of roof		Folder	
Metal Roofs			Folder	
1/12 Area (Metal)			Roof Area	
16" 5V		7 Thermal and Moisture Protection	PRP Material	
15 # Felt	15 # Felt	7 Thermal and Moisture Protection	PRP Material	
12x1-1/2" Hex Head Screws	Hex Head 250 per Bag	7 Thermal and Moisture Protection	PRP Material	
Metal Labor (priced per SQ FT)	Priced per SQ FT		PRP Labor	
Additional Part		7 Thermal and Moisture Protection	PRP Material	
2/12 Area (Metal)			Roof Area	
16" 5V		7 Thermal and Moisture Protection	PRP Material	
30 # Felt	30 # Felt	7 Thermal and Moisture Protection	PRP Material	
12x1-1/2" Hex Head Screws	Hex Head 250 per Bag	7 Thermal and Moisture Protection	PRP Material	
Metal Labor (priced per SQ FT)	Priced per SQ FT		PRP Labor	
Additional Part		7 Thermal and Moisture Protection	PRP Material	
3/12 Area (Metal)			Roof Area	
16" 5V		7 Thermal and Moisture Protection	PRP Material	
30 # Felt	30 # Felt	7 Thermal and Moisture Protection	PRP Material	
12x1-1/2" Hex Head Screws	Hex Head 250 per Bag	7 Thermal and Moisture Protection	PRP Material	
Metal Labor (priced per SQ FT)	Priced per SQ FT		PRP Labor	
Additional Part		7 Thermal and Moisture Protection	PRP Material	
4/12 Area (Metal)			Roof Area	
16" 5V		7 Thermal and Moisture Protection	PRP Material	
30 # Felt	30 # Felt	7 Thermal and Moisture Protection	PRP Material	
12x1-1/2" Hex Head Screws	Hex Head 250 per Bag	7 Thermal and Moisture Protection	PRP Material	
Metal Labor (priced per SQ FT)	Priced per SQ FT		PRP Labor	
Additional Part		7 Thermal and Moisture Protection	PRP Material	
5/12 Area (Metal)			Roof Area	
16" 5V		7 Thermal and Moisture Protection	PRP Material	
30 # Felt	30 # Felt	7 Thermal and Moisture Protection	PRP Material	
12x1-1/2" Hex Head Screws	Hex Head 250 per Bag	7 Thermal and Moisture Protection	PRP Material	
Metal Labor (priced per SQ FT)	Priced per SQ FT		PRP Labor	
Additional Part		7 Thermal and Moisture Protection	PRP Material	
6/12 Area (Metal)			Roof Area	
16" 5V		7 Thermal and Moisture Protection	PRP Material	
30 # Felt	30 # Felt	7 Thermal and Moisture Protection	PRP Material	
12x1-1/2" Hex Head Screws	Hex Head 250 per Bag	7 Thermal and Moisture Protection	PRP Material	
Metal Labor (priced per SQ FT)	Priced per SQ FT		PRP Labor	
Additional Part		7 Thermal and Moisture Protection	PRP Material	
7/12 Area (Metal)			Roof Area	
16" 5V		7 Thermal and Moisture Protection	PRP Material	
30 # Felt	30 # Felt	7 Thermal and Moisture Protection	PRP Material	
12x1-1/2" Hex Head Screws	Hex Head 250 per Bag	7 Thermal and Moisture Protection	PRP Material	
Metal Labor (priced per SQ FT)	Priced per SQ FT		PRP Labor	
Additional Part		7 Thermal and Moisture Protection	PRP Material	
8/12 Area (Metal)			Roof Area	
16" 5V		7 Thermal and Moisture Protection	PRP Material	
30 # Felt	30 # Felt	7 Thermal and Moisture Protection	PRP Material	
12x1-1/2" Hex Head Screws	Hex Head 250 per Bag	7 Thermal and Moisture Protection	PRP Material	
Metal Labor (priced per SQ FT)	Priced per SQ FT		PRP Labor	
Additional Part		7 Thermal and Moisture Protection	PRP Material	
9/12 Area (Metal)			Roof Area	
16" 5V		7 Thermal and Moisture Protection	PRP Material	
30 # Felt	30 # Felt	7 Thermal and Moisture Protection	PRP Material	
12x1-1/2" Hex Head Screws	Hex Head 250 per Bag	7 Thermal and Moisture Protection	PRP Material	
Metal Labor (priced per SQ FT)	Priced per SQ FT		PRP Labor	
Additional Part		7 Thermal and Moisture Protection	PRP Material	

PRP Residential Assemblies—Continued

Name	Description	Division	Type	Color
10/12 Area (Metal)			Roof Area	
16" 5V		7 Thermal and Moisture Protection	PRP Material	
30 # Felt	30 # Felt	7 Thermal and Moisture Protection	PRP Material	
12x1-1/2" Hex Head Screws	Hex Head 250 per Bag	7 Thermal and Moisture Protection	PRP Material	
Metal Labor (priced per SQ FT)	Priced per SQ FT		PRP Labor	
Additional Part		7 Thermal and Moisture Protection	PRP Material	
11/12 Area (Metal)			Roof Area	
16" 5V		7 Thermal and Moisture Protection	PRP Material	
30 # Felt	30 # Felt	7 Thermal and Moisture Protection	PRP Material	
12x1-1/2" Hex Head Screws	Hex Head 250 per Bag	7 Thermal and Moisture Protection	PRP Material	
Metal Labor (priced per SQ FT)	Priced per SQ FT		PRP Labor	
Additional Part		7 Thermal and Moisture Protection	PRP Material	
12/12 Area (Metal)			Roof Area	
16" 5V		7 Thermal and Moisture Protection	PRP Material	
30 # Felt	30 # Felt	7 Thermal and Moisture Protection	PRP Material	
12x1-1/2" Hex Head Screws	Hex Head 250 per Bag	7 Thermal and Moisture Protection	PRP Material	
Metal Labor (priced per SQ FT)	Priced per SQ FT		PRP Labor	
Additional Part		7 Thermal and Moisture Protection	PRP Material	
13/12 Area (Metal)			Roof Area	
16" 5V		7 Thermal and Moisture Protection	PRP Material	
30 # Felt	30 # Felt	7 Thermal and Moisture Protection	PRP Material	
12x1-1/2" Hex Head Screws	Hex Head 250 per Bag	7 Thermal and Moisture Protection	PRP Material	
Metal Labor (priced per SQ FT)	Priced per SQ FT		PRP Labor	
Additional Part		7 Thermal and Moisture Protection	PRP Material	
14/12 Area (Metal)			Roof Area	
16" 5V		7 Thermal and Moisture Protection	PRP Material	
30 # Felt	30 # Felt	7 Thermal and Moisture Protection	PRP Material	
12x1-1/2" Hex Head Screws	Hex Head 250 per Bag	7 Thermal and Moisture Protection	PRP Material	
Metal Labor (priced per SQ FT)	Priced per SQ FT		PRP Labor	
Additional Part		7 Thermal and Moisture Protection	PRP Material	
15/12 Area (Metal)			Roof Area	
16" 5V		7 Thermal and Moisture Protection	PRP Material	
30 # Felt	30 # Felt	7 Thermal and Moisture Protection	PRP Material	
12x1-1/2" Hex Head Screws	Hex Head 250 per Bag	7 Thermal and Moisture Protection	PRP Material	
Metal Labor (priced per SQ FT)	Priced per SQ FT		PRP Labor	
Additional Part		7 Thermal and Moisture Protection	PRP Material	
16/12 Area (Metal)			Roof Area	
16" 5V		7 Thermal and Moisture Protection	PRP Material	
30 # Felt	30 # Felt	7 Thermal and Moisture Protection	PRP Material	
12x1-1/2" Hex Head Screws	Hex Head 250 per Bag	7 Thermal and Moisture Protection	PRP Material	
Metal Labor (priced per SQ FT)	Priced per SQ FT		PRP Labor	
Additional Part		7 Thermal and Moisture Protection	PRP Material	

PRP Residential Assemblies—Continued

Name	Description	Division	Type	Color
Tile Roofs			Folder	
1/12 Area (Tile)			Roof Area	
30 # Felt	30 # Felt	7 Thermal and Moisture Protection	PRP Material	
Slate Tile		7 Thermal and Moisture Protection	PRP Material	
2" Ring Shank Hand Nail	50 Lb Box	7 Thermal and Moisture Protection	PRP Material	
Tile Labor	Priced per Square		PRP Labor	
1"x3" - 8' Batten		7 Thermal and Moisture Protection	PRP Material	
Additional Part		7 Thermal and Moisture Protection	PRP Material	
2/12 Area (Tile)			Roof Area	
30 # Felt	30 # Felt	7 Thermal and Moisture Protection	PRP Material	
Slate Tile		7 Thermal and Moisture Protection	PRP Material	
2" Ring Shank Hand Nail	50 Lb Box	7 Thermal and Moisture Protection	PRP Material	
Tile Labor	Priced per Square		PRP Labor	
1"x3" - 8' Batten		7 Thermal and Moisture Protection	PRP Material	
Additional Part		7 Thermal and Moisture Protection	PRP Material	
3/12 Area (Tile)			Roof Area	
30 # Felt	30 # Felt	7 Thermal and Moisture Protection	PRP Material	
Slate Tile		7 Thermal and Moisture Protection	PRP Material	
2" Ring Shank Hand Nail	50 Lb Box	7 Thermal and Moisture Protection	PRP Material	
Tile Labor	Priced per Square		PRP Labor	
1"x3" - 8' Batten		7 Thermal and Moisture Protection	PRP Material	
Additional Part		7 Thermal and Moisture Protection	PRP Material	
4/12 Area (Tile)			Roof Area	
30 # Felt	30 # Felt	7 Thermal and Moisture Protection	PRP Material	
Slate Tile		7 Thermal and Moisture Protection	PRP Material	
2" Ring Shank Hand Nail	50 Lb Box	7 Thermal and Moisture Protection	PRP Material	
Tile Labor	Priced per Square		PRP Labor	
1"x3" - 8' Batten		7 Thermal and Moisture Protection	PRP Material	
Additional Part		7 Thermal and Moisture Protection	PRP Material	
5/12 Area (Tile)			Roof Area	
30 # Felt	30 # Felt	7 Thermal and Moisture Protection	PRP Material	
Slate Tile		7 Thermal and Moisture Protection	PRP Material	
2" Ring Shank Hand Nail	50 Lb Box	7 Thermal and Moisture Protection	PRP Material	
Tile Labor	Priced per Square		PRP Labor	
1"x3" - 8' Batten		7 Thermal and Moisture Protection	PRP Material	
Additional Part		7 Thermal and Moisture Protection	PRP Material	
6/12 Area (Tile)			Roof Area	
30 # Felt	30 # Felt	7 Thermal and Moisture Protection	PRP Material	
Slate Tile		7 Thermal and Moisture Protection	PRP Material	
2" Ring Shank Hand Nail	50 Lb Box	7 Thermal and Moisture Protection	PRP Material	
Tile Labor	Priced per Square		PRP Labor	
1"x3" - 8' Batten		7 Thermal and Moisture Protection	PRP Material	
Additional Part		7 Thermal and Moisture Protection	PRP Material	
7/12 Area (Tile)			Roof Area	
30 # Felt	30 # Felt	7 Thermal and Moisture Protection	PRP Material	
Slate Tile		7 Thermal and Moisture Protection	PRP Material	
2" Ring Shank Hand Nail	50 Lb Box	7 Thermal and Moisture Protection	PRP Material	
Tile Labor	Priced per Square		PRP Labor	
1"x3" - 8' Batten		7 Thermal and Moisture Protection	PRP Material	
Additional Part		7 Thermal and Moisture Protection	PRP Material	
8/12 Area (Tile)			Roof Area	
30 # Felt	30 # Felt	7 Thermal and Moisture Protection	PRP Material	
Slate Tile		7 Thermal and Moisture Protection	PRP Material	
2" Ring Shank Hand Nail	50 Lb Box	7 Thermal and Moisture Protection	PRP Material	
Tile Labor	Priced per Square		PRP Labor	
1"x3" - 8' Batten		7 Thermal and Moisture Protection	PRP Material	
Additional Part		7 Thermal and Moisture Protection	PRP Material	

PRP Residential Assemblies—Continued

Name	Description	Division	Type	Color
9/12 Area (Tile)			Roof Area	Red
30 # Felt	30 # Felt	7 Thermal and Moisture Protection	PRP Material	
Slate Tile		7 Thermal and Moisture Protection	PRP Material	
2" Ring Shank Hand Nail	50 Lb Box	7 Thermal and Moisture Protection	PRP Material	
Tile Labor	Priced per Square		PRP Labor	
1"x3" - 8' Batten		7 Thermal and Moisture Protection	PRP Material	
Additional Part		7 Thermal and Moisture Protection	PRP Material	
10/12 Area (Tile)			Roof Area	Teal
30 # Felt	30 # Felt	7 Thermal and Moisture Protection	PRP Material	
Slate Tile		7 Thermal and Moisture Protection	PRP Material	
2" Ring Shank Hand Nail	50 Lb Box	7 Thermal and Moisture Protection	PRP Material	
Tile Labor	Priced per Square		PRP Labor	
1"x3" - 8' Batten		7 Thermal and Moisture Protection	PRP Material	
Additional Part		7 Thermal and Moisture Protection	PRP Material	
11/12 Area (Tile)			Roof Area	Purple
30 # Felt	30 # Felt	7 Thermal and Moisture Protection	PRP Material	
Slate Tile		7 Thermal and Moisture Protection	PRP Material	
2" Ring Shank Hand Nail	50 Lb Box	7 Thermal and Moisture Protection	PRP Material	
Tile Labor	Priced per Square		PRP Labor	
1"x3" - 8' Batten		7 Thermal and Moisture Protection	PRP Material	
Additional Part		7 Thermal and Moisture Protection	PRP Material	
12/12 Area (Tile)			Roof Area	Dark Blue
30 # Felt	30 # Felt	7 Thermal and Moisture Protection	PRP Material	
Slate Tile		7 Thermal and Moisture Protection	PRP Material	
2" Ring Shank Hand Nail	50 Lb Box	7 Thermal and Moisture Protection	PRP Material	
Tile Labor	Priced per Square		PRP Labor	
1"x3" - 8' Batten		7 Thermal and Moisture Protection	PRP Material	
Additional Part		7 Thermal and Moisture Protection	PRP Material	
13/12 Area (Tile)			Roof Area	Olive Green
30 # Felt	30 # Felt	7 Thermal and Moisture Protection	PRP Material	
Slate Tile		7 Thermal and Moisture Protection	PRP Material	
2" Ring Shank Hand Nail	50 Lb Box	7 Thermal and Moisture Protection	PRP Material	
Tile Labor	Priced per Square		PRP Labor	
1"x3" - 8' Batten		7 Thermal and Moisture Protection	PRP Material	
Additional Part		7 Thermal and Moisture Protection	PRP Material	
14/12 Area (Tile)			Roof Area	Dark Green
30 # Felt	30 # Felt	7 Thermal and Moisture Protection	PRP Material	
Slate Tile		7 Thermal and Moisture Protection	PRP Material	
2" Ring Shank Hand Nail	50 Lb Box	7 Thermal and Moisture Protection	PRP Material	
Tile Labor	Priced per Square		PRP Labor	
1"x3" - 8' Batten		7 Thermal and Moisture Protection	PRP Material	
Additional Part		7 Thermal and Moisture Protection	PRP Material	
15/12 Area (Tile)			Roof Area	Dark Red
30 # Felt	30 # Felt	7 Thermal and Moisture Protection	PRP Material	
Slate Tile		7 Thermal and Moisture Protection	PRP Material	
2" Ring Shank Hand Nail	50 Lb Box	7 Thermal and Moisture Protection	PRP Material	
Tile Labor	Priced per Square		PRP Labor	
1"x3" - 8' Batten		7 Thermal and Moisture Protection	PRP Material	
Additional Part		7 Thermal and Moisture Protection	PRP Material	
16/12 Area (Tile)			Roof Area	Cyan
30 # Felt	30 # Felt	7 Thermal and Moisture Protection	PRP Material	
Slate Tile		7 Thermal and Moisture Protection	PRP Material	
2" Ring Shank Hand Nail	50 Lb Box	7 Thermal and Moisture Protection	PRP Material	
Tile Labor	Priced per Square		PRP Labor	
1"x3" - 8' Batten		7 Thermal and Moisture Protection	PRP Material	
Additional Part		7 Thermal and Moisture Protection	PRP Material	

PRP Residential Assemblies—Continued

Name	Description	Division	Type	Color
11/12 Area (Shingle)			Roof Area	Yellow
15 # Felt	15 # Felt	7 Thermal and Moisture Protection	PRP Material	
20 Yr. 3-Tab Shingles		7 Thermal and Moisture Protection	PRP Material	
1-1/2" Ring Shank Coil Nails	60 Coils Per Box	7 Thermal and Moisture Protection	PRP Material	
Shingle Labor	Priced per SQR		PRP Labor	
Additional Part		7 Thermal and Moisture Protection	PRP Material	
12/12 Area (Shingle)			Roof Area	Green
15 # Felt	15 # Felt	7 Thermal and Moisture Protection	PRP Material	
20 Yr. 3-Tab Shingles		7 Thermal and Moisture Protection	PRP Material	
1-1/2" Ring Shank Coil Nails	60 Coils Per Box	7 Thermal and Moisture Protection	PRP Material	
Shingle Labor	Priced per SQR		PRP Labor	
Additional Part		7 Thermal and Moisture Protection	PRP Material	
13/12 Area (Shingle)			Roof Area	Red
15 # Felt	15 # Felt	7 Thermal and Moisture Protection	PRP Material	
20 Yr. 3-Tab Shingles		7 Thermal and Moisture Protection	PRP Material	
1-1/2" Ring Shank Coil Nails	60 Coils Per Box	7 Thermal and Moisture Protection	PRP Material	
Shingle Labor	Priced per SQR		PRP Labor	
Additional Part		7 Thermal and Moisture Protection	PRP Material	
14/12 Area (Shingle)			Roof Area	Teal
15 # Felt	15 # Felt	7 Thermal and Moisture Protection	PRP Material	
20 Yr. 3-Tab Shingles		7 Thermal and Moisture Protection	PRP Material	
1-1/2" Ring Shank Coil Nails	60 Coils Per Box	7 Thermal and Moisture Protection	PRP Material	
Shingle Labor	Priced per SQR		PRP Labor	
Additional Part		7 Thermal and Moisture Protection	PRP Material	
15/12 Area (Shingle)			Roof Area	Purple
15 # Felt	15 # Felt	7 Thermal and Moisture Protection	PRP Material	
20 Yr. 3-Tab Shingles		7 Thermal and Moisture Protection	PRP Material	
1-1/2" Ring Shank Coil Nails	60 Coils Per Box	7 Thermal and Moisture Protection	PRP Material	
Shingle Labor	Priced per SQR		PRP Labor	
Additional Part		7 Thermal and Moisture Protection	PRP Material	
16/12 Area (Shingle)			Roof Area	Dark Blue
15 # Felt	15 # Felt	7 Thermal and Moisture Protection	PRP Material	
20 Yr. 3-Tab Shingles		7 Thermal and Moisture Protection	PRP Material	
1-1/2" Ring Shank Coil Nails	60 Coils Per Box	7 Thermal and Moisture Protection	PRP Material	
Shingle Labor	Priced per SQR		PRP Labor	
Additional Part		7 Thermal and Moisture Protection	PRP Material	

PRP Residential Assemblies—Continued

Name	Description	Division	Type	Color
10/12 Area (Shingle)			Roof Area	Green
15 # Felt	15 # Felt	7 Thermal and Moisture Protection	PRP Material	
20 Yr. 3-Tab Shingles		7 Thermal and Moisture Protection	PRP Material	
1-1/2" Ring Shank Coil Nails	60 Coils Per Box	7 Thermal and Moisture Protection	PRP Material	
Shingle Labor	Priced per SQR	7 Thermal and Moisture Protection	PRP Labor	
Additional Part		7 Thermal and Moisture Protection	PRP Material	
11/12 Area (Shingle)			Roof Area	Red
15 # Felt	15 # Felt	7 Thermal and Moisture Protection	PRP Material	
20 Yr. 3-Tab Shingles		7 Thermal and Moisture Protection	PRP Material	
1-1/2" Ring Shank Coil Nails	60 Coils Per Box	7 Thermal and Moisture Protection	PRP Material	
Shingle Labor	Priced per SQR	7 Thermal and Moisture Protection	PRP Labor	
Additional Part		7 Thermal and Moisture Protection	PRP Material	
12/12 Area (Shingle)			Roof Area	Cyan
15 # Felt	15 # Felt	7 Thermal and Moisture Protection	PRP Material	
20 Yr. 3-Tab Shingles		7 Thermal and Moisture Protection	PRP Material	
1-1/2" Ring Shank Coil Nails	60 Coils Per Box	7 Thermal and Moisture Protection	PRP Material	
Shingle Labor	Priced per SQR	7 Thermal and Moisture Protection	PRP Labor	
Additional Part		7 Thermal and Moisture Protection	PRP Material	
13/12 Area (Shingle)			Roof Area	Magenta
15 # Felt	15 # Felt	7 Thermal and Moisture Protection	PRP Material	
20 Yr. 3-Tab Shingles		7 Thermal and Moisture Protection	PRP Material	
1-1/2" Ring Shank Coil Nails	60 Coils Per Box	7 Thermal and Moisture Protection	PRP Material	
Shingle Labor	Priced per SQR	7 Thermal and Moisture Protection	PRP Labor	
Additional Part		7 Thermal and Moisture Protection	PRP Material	
14/12 Area (Shingle)			Roof Area	Blue
15 # Felt	15 # Felt	7 Thermal and Moisture Protection	PRP Material	
20 Yr. 3-Tab Shingles		7 Thermal and Moisture Protection	PRP Material	
1-1/2" Ring Shank Coil Nails	60 Coils Per Box	7 Thermal and Moisture Protection	PRP Material	
Shingle Labor	Priced per SQR	7 Thermal and Moisture Protection	PRP Labor	
Additional Part		7 Thermal and Moisture Protection	PRP Material	
15/12 Area (Shingle)			Roof Area	Yellow
15 # Felt	15 # Felt	7 Thermal and Moisture Protection	PRP Material	
20 Yr. 3-Tab Shingles		7 Thermal and Moisture Protection	PRP Material	
1-1/2" Ring Shank Coil Nails	60 Coils Per Box	7 Thermal and Moisture Protection	PRP Material	
Shingle Labor	Priced per SQR	7 Thermal and Moisture Protection	PRP Labor	
Additional Part		7 Thermal and Moisture Protection	PRP Material	
16/12 Area (Shingle)			Roof Area	Light Green
15 # Felt	15 # Felt	7 Thermal and Moisture Protection	PRP Material	
20 Yr. 3-Tab Shingles		7 Thermal and Moisture Protection	PRP Material	
1-1/2" Ring Shank Coil Nails	60 Coils Per Box	7 Thermal and Moisture Protection	PRP Material	
Shingle Labor	Priced per SQR	7 Thermal and Moisture Protection	PRP Labor	
Additional Part		7 Thermal and Moisture Protection	PRP Material	

PRP Residential Assemblies—Continued

Name	Description	Division	Type	Color
Tile Roofs			Folder	
1/12 Area (Tile)			Roof Area	
30 # Felt	30 # Felt	7 Thermal and Moisture Protection	PRP Material	
Slate Tile		7 Thermal and Moisture Protection	PRP Material	
2" Ring Shank Hand Nail	50 Lb Box	7 Thermal and Moisture Protection	PRP Material	
Tile Labor			PRP Labor	
1"x3" - 8' Batten		7 Thermal and Moisture Protection	PRP Material	
Additional Part		7 Thermal and Moisture Protection	PRP Material	
2/12 Area (Tile)			Roof Area	
30 # Felt	30 # Felt	7 Thermal and Moisture Protection	PRP Material	
Slate Tile		7 Thermal and Moisture Protection	PRP Material	
2" Ring Shank Hand Nail	50 Lb Box	7 Thermal and Moisture Protection	PRP Material	
Tile Labor			PRP Labor	
1"x3" - 8' Batten		7 Thermal and Moisture Protection	PRP Material	
Additional Part		7 Thermal and Moisture Protection	PRP Material	
3/12 Area (Tile)			Roof Area	
30 # Felt	30 # Felt	7 Thermal and Moisture Protection	PRP Material	
Slate Tile		7 Thermal and Moisture Protection	PRP Material	
2" Ring Shank Hand Nail	50 Lb Box	7 Thermal and Moisture Protection	PRP Material	
1"x3" - 8' Batten		7 Thermal and Moisture Protection	PRP Material	
Tile Labor			PRP Labor	
Additional Part		7 Thermal and Moisture Protection	PRP Material	
4/12 Area (Tile)			Roof Area	
30 # Felt	30 # Felt	7 Thermal and Moisture Protection	PRP Material	
Slate Tile		7 Thermal and Moisture Protection	PRP Material	
2" Ring Shank Hand Nail	50 Lb Box	7 Thermal and Moisture Protection	PRP Material	
1"x3" - 8' Batten		7 Thermal and Moisture Protection	PRP Material	
Tile Labor			PRP Labor	
Additional Part		7 Thermal and Moisture Protection	PRP Material	
5/12 Area (Tile)			Roof Area	
30 # Felt	30 # Felt	7 Thermal and Moisture Protection	PRP Material	
Slate Tile		7 Thermal and Moisture Protection	PRP Material	
2" Ring Shank Hand Nail	50 Lb Box	7 Thermal and Moisture Protection	PRP Material	
1"x3" - 8' Batten		7 Thermal and Moisture Protection	PRP Material	
Tile Labor			PRP Labor	
Additional Part		7 Thermal and Moisture Protection	PRP Material	
6/12 Area (Tile)			Roof Area	
30 # Felt	30 # Felt	7 Thermal and Moisture Protection	PRP Material	
Slate Tile		7 Thermal and Moisture Protection	PRP Material	
2" Ring Shank Hand Nail	50 Lb Box	7 Thermal and Moisture Protection	PRP Material	
1"x3" - 8' Batten		7 Thermal and Moisture Protection	PRP Material	
Tile Labor			PRP Labor	
Additional Part		7 Thermal and Moisture Protection	PRP Material	
7/12 Area (Tile)			Roof Area	
30 # Felt	30 # Felt	7 Thermal and Moisture Protection	PRP Material	
Slate Tile		7 Thermal and Moisture Protection	PRP Material	
2" Ring Shank Hand Nail	50 Lb Box	7 Thermal and Moisture Protection	PRP Material	
1"x3" - 8' Batten		7 Thermal and Moisture Protection	PRP Material	
Tile Labor			PRP Labor	
Additional Part		7 Thermal and Moisture Protection	PRP Material	
8/12 Area (Tile)			Roof Area	
30 # Felt	30 # Felt	7 Thermal and Moisture Protection	PRP Material	
Slate Tile		7 Thermal and Moisture Protection	PRP Material	
2" Ring Shank Hand Nail	50 Lb Box	7 Thermal and Moisture Protection	PRP Material	
1"x3" - 8' Batten		7 Thermal and Moisture Protection	PRP Material	
Tile Labor			PRP Labor	
Additional Part		7 Thermal and Moisture Protection	PRP Material	

PRP Residential Assemblies—Continued

Name	Description	Division	Type	Color
9/12 Area (Tile)			Roof Area	
30 # Felt	30 # Felt	7 Thermal and Moisture Protection	PRP Material	
Slate Tile		7 Thermal and Moisture Protection	PRP Material	
2" Ring Shank Hand Nail	50 Lb Box	7 Thermal and Moisture Protection	PRP Material	
1"x3" - 8' Batten		7 Thermal and Moisture Protection	PRP Material	
Tile Labor			PRP Labor	
Additional Part		7 Thermal and Moisture Protection	PRP Material	
10/12 Area (Tile)			Roof Area	
30 # Felt	30 # Felt	7 Thermal and Moisture Protection	PRP Material	
Slate Tile		7 Thermal and Moisture Protection	PRP Material	
2" Ring Shank Hand Nail	50 Lb Box	7 Thermal and Moisture Protection	PRP Material	
1"x3" - 8' Batten		7 Thermal and Moisture Protection	PRP Material	
Tile Labor			PRP Labor	
Additional Part		7 Thermal and Moisture Protection	PRP Material	
11/12 Area (Tile)			Roof Area	
30 # Felt	30 # Felt	7 Thermal and Moisture Protection	PRP Material	
Slate Tile		7 Thermal and Moisture Protection	PRP Material	
2" Ring Shank Hand Nail	50 Lb Box	7 Thermal and Moisture Protection	PRP Material	
1"x3" - 8' Batten		7 Thermal and Moisture Protection	PRP Material	
Tile Labor			PRP Labor	
Additional Part		7 Thermal and Moisture Protection	PRP Material	
12/12 Area (Tile)			Roof Area	
30 # Felt	30 # Felt	7 Thermal and Moisture Protection	PRP Material	
Slate Tile		7 Thermal and Moisture Protection	PRP Material	
2" Ring Shank Hand Nail	50 Lb Box	7 Thermal and Moisture Protection	PRP Material	
1"x3" - 8' Batten		7 Thermal and Moisture Protection	PRP Material	
Tile Labor			PRP Labor	
Additional Part		7 Thermal and Moisture Protection	PRP Material	
13/12 Area (Tile)			Roof Area	
30 # Felt	30 # Felt	7 Thermal and Moisture Protection	PRP Material	
Slate Tile		7 Thermal and Moisture Protection	PRP Material	
2" Ring Shank Hand Nail	50 Lb Box	7 Thermal and Moisture Protection	PRP Material	
1"x3" - 8' Batten		7 Thermal and Moisture Protection	PRP Material	
Tile Labor			PRP Labor	
Additional Part		7 Thermal and Moisture Protection	PRP Material	
14/12 Area (Tile)			Roof Area	
30 # Felt	30 # Felt	7 Thermal and Moisture Protection	PRP Material	
Slate Tile		7 Thermal and Moisture Protection	PRP Material	
2" Ring Shank Hand Nail	50 Lb Box	7 Thermal and Moisture Protection	PRP Material	
1"x3" - 8' Batten		7 Thermal and Moisture Protection	PRP Material	
Tile Labor			PRP Labor	
Additional Part		7 Thermal and Moisture Protection	PRP Material	
15/12 Area (Tile)			Roof Area	
30 # Felt	30 # Felt	7 Thermal and Moisture Protection	PRP Material	
Slate Tile		7 Thermal and Moisture Protection	PRP Material	
2" Ring Shank Hand Nail	50 Lb Box	7 Thermal and Moisture Protection	PRP Material	
1"x3" - 8' Batten		7 Thermal and Moisture Protection	PRP Material	
Tile Labor			PRP Labor	
Additional Part		7 Thermal and Moisture Protection	PRP Material	
16/12 Area (Tile)			Roof Area	
30 # Felt	30 # Felt	7 Thermal and Moisture Protection	PRP Material	
Slate Tile		7 Thermal and Moisture Protection	PRP Material	
2" Ring Shank Hand Nail	50 Lb Box	7 Thermal and Moisture Protection	PRP Material	
1"x3" - 8' Batten		7 Thermal and Moisture Protection	PRP Material	
Tile Labor			PRP Labor	
Additional Part		7 Thermal and Moisture Protection	PRP Material	

PRP Residential Assemblies—Continued

Name	Description	Division	Type	Color
Metal Roofs			Folder	Black
1/12 Area (Metal)			Roof Area	Red
16" 5V		7 Thermal and Moisture Protection	PRP Material	
30 # Felt	30 # Felt	7 Thermal and Moisture Protection	PRP Material	
14x2" Hex Head Screws	Hex Head 250 per Bag	7 Thermal and Moisture Protection	PRP Material	
Metal Labor (priced per SQ FT)	Priced per SQ FT	7 Thermal and Moisture Protection	PRP Labor	
Additional Part		7 Thermal and Moisture Protection	PRP Material	
2/12 Area (Metal)			Roof Area	Teal
16" 5V		7 Thermal and Moisture Protection	PRP Material	
30 # Felt	30 # Felt	7 Thermal and Moisture Protection	PRP Material	
14x2" Hex Head Screws	Hex Head 250 per Bag	7 Thermal and Moisture Protection	PRP Material	
Metal Labor (priced per SQ FT)	Priced per SQ FT	7 Thermal and Moisture Protection	PRP Labor	
Additional Part		7 Thermal and Moisture Protection	PRP Material	
3/12 Area (Metal)			Roof Area	Purple
16" 5V		7 Thermal and Moisture Protection	PRP Material	
30 # Felt	30 # Felt	7 Thermal and Moisture Protection	PRP Material	
14x2" Hex Head Screws	Hex Head 250 per Bag	7 Thermal and Moisture Protection	PRP Material	
Metal Labor (priced per SQ FT)	Priced per SQ FT	7 Thermal and Moisture Protection	PRP Labor	
Additional Part		7 Thermal and Moisture Protection	PRP Material	
4/12 Area (Metal)			Roof Area	Dark Blue
16" 5V		7 Thermal and Moisture Protection	PRP Material	
30 # Felt	30 # Felt	7 Thermal and Moisture Protection	PRP Material	
14x2" Hex Head Screws	Hex Head 250 per Bag	7 Thermal and Moisture Protection	PRP Material	
Metal Labor (priced per SQ FT)	Priced per SQ FT	7 Thermal and Moisture Protection	PRP Labor	
Additional Part		7 Thermal and Moisture Protection	PRP Material	
5/12 Area (Metal)			Roof Area	Olive Green
16" 5V		7 Thermal and Moisture Protection	PRP Material	
30 # Felt	30 # Felt	7 Thermal and Moisture Protection	PRP Material	
14x2" Hex Head Screws	Hex Head 250 per Bag	7 Thermal and Moisture Protection	PRP Material	
Metal Labor (priced per SQ FT)	Priced per SQ FT	7 Thermal and Moisture Protection	PRP Labor	
Additional Part		7 Thermal and Moisture Protection	PRP Material	
6/12 Area (Metal)			Roof Area	Dark Green
16" 5V		7 Thermal and Moisture Protection	PRP Material	
30 # Felt	30 # Felt	7 Thermal and Moisture Protection	PRP Material	
14x2" Hex Head Screws	Hex Head 250 per Bag	7 Thermal and Moisture Protection	PRP Material	
Metal Labor (priced per SQ FT)	Priced per SQ FT	7 Thermal and Moisture Protection	PRP Labor	
Additional Part		7 Thermal and Moisture Protection	PRP Material	
7/12 Area (Metal)			Roof Area	Dark Red
16" 5V		7 Thermal and Moisture Protection	PRP Material	
30 # Felt	30 # Felt	7 Thermal and Moisture Protection	PRP Material	
14x2" Hex Head Screws	Hex Head 250 per Bag	7 Thermal and Moisture Protection	PRP Material	
Metal Labor (priced per SQ FT)	Priced per SQ FT	7 Thermal and Moisture Protection	PRP Labor	
Additional Part		7 Thermal and Moisture Protection	PRP Material	
8/12 Area (Metal)			Roof Area	Cyan
16" 5V		7 Thermal and Moisture Protection	PRP Material	
30 # Felt	30 # Felt	7 Thermal and Moisture Protection	PRP Material	
14x2" Hex Head Screws	Hex Head 250 per Bag	7 Thermal and Moisture Protection	PRP Material	
Metal Labor (priced per SQ FT)	Priced per SQ FT	7 Thermal and Moisture Protection	PRP Labor	
Additional Part		7 Thermal and Moisture Protection	PRP Material	
9/12 Area (Metal)			Roof Area	Magenta
16" 5V		7 Thermal and Moisture Protection	PRP Material	
30 # Felt	30 # Felt	7 Thermal and Moisture Protection	PRP Material	
14x2" Hex Head Screws	Hex Head 250 per Bag	7 Thermal and Moisture Protection	PRP Material	
Metal Labor (priced per SQ FT)	Priced per SQ FT	7 Thermal and Moisture Protection	PRP Labor	
Additional Part		7 Thermal and Moisture Protection	PRP Material	

PRP Residential Assemblies—Continued

Name	Description	Division	Type	Color
10/12 Area (Metal)			Roof Area	
16" 5V		7 Thermal and Moisture Protection	PRP Material	
30 # Felt	30 # Felt	7 Thermal and Moisture Protection	PRP Material	
14x2" Hex Head Screws	Hex Head 250 per Bag	7 Thermal and Moisture Protection	PRP Material	
Metal Labor (priced per SQ FT)	Priced per SQ FT	7 Thermal and Moisture Protection	PRP Labor	
Additional Part		7 Thermal and Moisture Protection	PRP Material	
11/12 Area (Metal)			Roof Area	
16" 5V		7 Thermal and Moisture Protection	PRP Material	
30 # Felt	30 # Felt	7 Thermal and Moisture Protection	PRP Material	
14x2" Hex Head Screws	Hex Head 250 per Bag	7 Thermal and Moisture Protection	PRP Material	
Metal Labor (priced per SQ FT)	Priced per SQ FT	7 Thermal and Moisture Protection	PRP Labor	
Additional Part		7 Thermal and Moisture Protection	PRP Material	
12/12 Area (Metal)			Roof Area	
16" 5V		7 Thermal and Moisture Protection	PRP Material	
30 # Felt	30 # Felt	7 Thermal and Moisture Protection	PRP Material	
14x2" Hex Head Screws	Hex Head 250 per Bag	7 Thermal and Moisture Protection	PRP Material	
Metal Labor (priced per SQ FT)	Priced per SQ FT	7 Thermal and Moisture Protection	PRP Labor	
Additional Part		7 Thermal and Moisture Protection	PRP Material	
13/12 Area (Metal)			Roof Area	
16" 5V		7 Thermal and Moisture Protection	PRP Material	
30 # Felt	30 # Felt	7 Thermal and Moisture Protection	PRP Material	
14x2" Hex Head Screws	Hex Head 250 per Bag	7 Thermal and Moisture Protection	PRP Material	
Metal Labor (priced per SQ FT)	Priced per SQ FT	7 Thermal and Moisture Protection	PRP Labor	
Additional Part		7 Thermal and Moisture Protection	PRP Material	
14/12 Area (Metal)			Roof Area	
16" 5V		7 Thermal and Moisture Protection	PRP Material	
30 # Felt	30 # Felt	7 Thermal and Moisture Protection	PRP Material	
14x2" Hex Head Screws	Hex Head 250 per Bag	7 Thermal and Moisture Protection	PRP Material	
Metal Labor (priced per SQ FT)	Priced per SQ FT	7 Thermal and Moisture Protection	PRP Labor	
Additional Part		7 Thermal and Moisture Protection	PRP Material	
15/12 Area (Metal)			Roof Area	
16" 5V		7 Thermal and Moisture Protection	PRP Material	
30 # Felt	30 # Felt	7 Thermal and Moisture Protection	PRP Material	
14x2" Hex Head Screws	Hex Head 250 per Bag	7 Thermal and Moisture Protection	PRP Material	
Metal Labor (priced per SQ FT)	Priced per SQ FT	7 Thermal and Moisture Protection	PRP Labor	
Additional Part		7 Thermal and Moisture Protection	PRP Material	
16/12 Area (Metal)			Roof Area	
16" 5V		7 Thermal and Moisture Protection	PRP Material	
30 # Felt	30 # Felt	7 Thermal and Moisture Protection	PRP Material	
14x2" Hex Head Screws	Hex Head 250 per Bag	7 Thermal and Moisture Protection	PRP Material	
Metal Labor (priced per SQ FT)	Priced per SQ FT	7 Thermal and Moisture Protection	PRP Labor	
Additional Part		7 Thermal and Moisture Protection	PRP Material	

PRP Residential Assemblies—Continued

Name	Description	Division	Type	Color
Linear Takeoffs			Folder	
Plan View	Top of Roof		Folder	
Ridges and Eaves			Folder	
Linear			Folder	
Ridge Vent			Linear	
Ridge Vent 50' Roll	Ridge Vent Priced per FT (Manufacturer)	7 Thermal and Moisture Protection	PRP Material	
Ridge Vent Labor (priced per FT)			PRP Labor	
Additional Part		7 Thermal and Moisture Protection	PRP Material	
Metal Ridge Cap			Linear	
Ridge Roll 10"	10" Lengths, 10 per Bundle	7 Thermal and Moisture Protection	PRP Material	
Ridge Vent Labor (priced per FT)			PRP Labor	
Additional Part		7 Thermal and Moisture Protection	PRP Material	
Ridge Shingles\Ridge Vent			Linear	
Ridge Cap Shingles	1 Bundle Covers 20'	7 Thermal and Moisture Protection	PRP Material	
Ridge Vent 20' Roll	Ridge Vent Priced per FT (Manufacturer)	7 Thermal and Moisture Protection	PRP Material	
1-1/2" Ring Shank Coil Nails	NLS 1.25" Coil Nails 60 Coils Per Box	7 Thermal and Moisture Protection	PRP Material	
Ridge Labor (priced per FT)			PRP Labor	
Additional Part		7 Thermal and Moisture Protection	PRP Material	
Ridge Shingles			Linear	
Ridge Cap Shingles	1 Bundle Covers 20'	7 Thermal and Moisture Protection	PRP Material	
1-1/2" Ring Shank Coil Nails	NLS 1.25" Coil Nails 60 Coils Per Box	7 Thermal and Moisture Protection	PRP Material	
Ridge Labor (priced per FT)			PRP Labor	
Additional Part		7 Thermal and Moisture Protection	PRP Material	
Starter Shingles			Linear	
Starter Strips Shingles	Starter Shingle (Manufacturer)	7 Thermal and Moisture Protection	PRP Material	
1-1/2" Ring Shank Coil Nails	NLS 1.25" Coil Nails 60 Coils Per Box	7 Thermal and Moisture Protection	PRP Material	
Starter Shingle Labor (priced per FT)			PRP Labor	
Additional Part		7 Thermal and Moisture Protection	PRP Material	
Starter Shingles\Drip Edge			Linear	
Starter Strips Shingles	Starter Shingle (Manufacturer)	7 Thermal and Moisture Protection	PRP Material	
1-1/2"x1-1/2" Steel Drip Edge	1.5 x1.5 Drip Edge Gal Mil	7 Thermal and Moisture Protection	PRP Material	
1-1/2" Ring Shank Coil Nails	NLS 1.25" Coil Nails 60 Coils Per Box	7 Thermal and Moisture Protection	PRP Material	
Starter Shingle Labor (priced per FT)			PRP Labor	
Drip Edge Labor			PRP Labor	
Additional Part		7 Thermal and Moisture Protection	PRP Material	
Starter Shingles\Drip Edge\Ice and Water			Linear	
Starter Strips Shingles	Starter Shingle (Manufacturer)	7 Thermal and Moisture Protection	PRP Material	
1-1/2"x1-1/2" Steel Drip Edge	1.5 x1.5 Drip Edge Gal Mil	7 Thermal and Moisture Protection	PRP Material	
Self-Adhere 1 Square Roll		7 Thermal and Moisture Protection	PRP Material	
1-1/2" Ring Shank Coil Nails	NLS 1.25" Coil Nails 60 Coils Per Box	7 Thermal and Moisture Protection	PRP Material	
Starter Shingle Labor (priced per FT)			PRP Labor	
Drip Edge Labor			PRP Labor	
Ice and Water Labor			PRP Labor	
Additional Part		7 Thermal and Moisture Protection	PRP Material	
Drip Edge			Linear	
1-1/2"x1-1/2" Steel Drip Edge	1.5 x1.5 Drip Edge Gal Mil	7 Thermal and Moisture Protection	PRP Material	
1-1/2" Ring Shank Coil Nails	NLS 1.25" Coil Nails 60 Coils Per Box	7 Thermal and Moisture Protection	PRP Material	
Drip Edge Labor			PRP Labor	
Additional Part		7 Thermal and Moisture Protection	PRP Material	
Drip Edge\Ice and Water			Linear	
1-1/2"x1-1/2" Steel Drip Edge	1.5 x1.5 Drip Edge Gal Mil	7 Thermal and Moisture Protection	PRP Material	
Self-Adhere 1 Square Roll		7 Thermal and Moisture Protection	PRP Material	
1-1/2" Ring Shank Coil Nails	NLS 1.25" Coil Nails 60 Coils Per Box	7 Thermal and Moisture Protection	PRP Material	
Drip Edge Labor			PRP Labor	
Ice and Water Labor			PRP Labor	
Additional Part		7 Thermal and Moisture Protection	PRP Material	
Ice and Water			Linear	
Self-Adhere 1 Square Roll		7 Thermal and Moisture Protection	PRP Material	
1-1/2" Ring Shank Coil Nails	NLS 1.25" Coil Nails 60 Coils Per Box	7 Thermal and Moisture Protection	PRP Material	
Ice and Water Labor			PRP Labor	
Additional Part		7 Thermal and Moisture Protection	PRP Material	

PRP Residential Assemblies—Continued

Name	Description	Division	Type	Color
Segment			Folder	Black
Ridge Vent			Segment	Blue
Ridge Vent 50' Roll	Ridge Vent Priced per FT (Manufacturer)	7 Thermal and Moisture Protection	PRP Material	
Ridge Vent Labor (priced per FT)			PRP Labor	
Additional Part		7 Thermal and Moisture Protection	PRP Material	
Metal Ridge Cap			Segment	Blue
Ridge Roll 10"	10' Lengths, 10 per Bundle	7 Thermal and Moisture Protection	PRP Material	
Ridge Vent Labor (priced per FT)			PRP Labor	
Additional Part		7 Thermal and Moisture Protection	PRP Material	
Ridge Shingles\Ridge Vent			Segment	Red
Ridge Cap Shingles	1 Bundle Covers 20'	7 Thermal and Moisture Protection	PRP Material	
Ridge Vent 20' Roll	Ridge Vent Priced per FT (Manufacturer)	7 Thermal and Moisture Protection	PRP Material	
1-1/2" Ring Shank Coil Nails	NLS 1.25" Coil Nails 60 Coils Per Box	7 Thermal and Moisture Protection	PRP Material	
Ridge Labor (priced per FT)			PRP Labor	
Additional Part		7 Thermal and Moisture Protection	PRP Material	
Ridge Shingles			Segment	Red
Ridge Cap Shingles	1 Bundle Covers 20'	7 Thermal and Moisture Protection	PRP Material	
1-1/2" Ring Shank Coil Nails	NLS 1.25" Coil Nails 60 Coils Per Box	7 Thermal and Moisture Protection	PRP Material	
Ridge Labor (priced per FT)			PRP Labor	
Additional Part		7 Thermal and Moisture Protection	PRP Material	
Starter Shingles			Segment	Orange
Starter Strips Shingles	Starter Shingle (Manufacturer)	7 Thermal and Moisture Protection	PRP Material	
1-1/2" Ring Shank Coil Nails	NLS 1.25" Coil Nails 60 Coils Per Box	7 Thermal and Moisture Protection	PRP Material	
Starter Shingle Labor (priced per FT)			PRP Labor	
Additional Part		7 Thermal and Moisture Protection	PRP Material	
Starter Shingles\Drip Edge			Segment	Green
Starter Strips Shingles	Starter Shingle (Manufacturer)	7 Thermal and Moisture Protection	PRP Material	
1-1/2"x1-1/2" Steel Drip Edge	1.5 x 1.5 Drip Edge Gal Mil	7 Thermal and Moisture Protection	PRP Material	
1-1/2" Ring Shank Coil Nails	NLS 1.25" Coil Nails 60 Coils Per Box	7 Thermal and Moisture Protection	PRP Material	
Starter Shingle Labor (priced per FT)			PRP Labor	
Drip Edge Labor			PRP Labor	
Additional Part		7 Thermal and Moisture Protection	PRP Material	
Starter Shingles\Drip Edge\Ice and Water			Segment	Green
Starter Strips Shingles	Starter Shingle (Manufacturer)	7 Thermal and Moisture Protection	PRP Material	
1-1/2"x1-1/2" Steel Drip Edge	1.5 x 1.5 Drip Edge Gal Mil	7 Thermal and Moisture Protection	PRP Material	
Self-Adhere 1 Square Roll		7 Thermal and Moisture Protection	PRP Material	
1-1/2" Ring Shank Coil Nails	NLS 1.25" Coil Nails 60 Coils Per Box	7 Thermal and Moisture Protection	PRP Material	
Starter Shingle Labor (priced per FT)			PRP Labor	
Drip Edge Labor			PRP Labor	
Ice and Water Labor			PRP Labor	
Additional Part		7 Thermal and Moisture Protection	PRP Material	
Starter Shingles\Drip Edge			Segment	Green
Starter Strips Shingles	Starter Shingle (Manufacturer)	7 Thermal and Moisture Protection	PRP Material	
1-1/2"x1-1/2" Steel Drip Edge	1.5 x 1.5 Drip Edge Gal Mil	7 Thermal and Moisture Protection	PRP Material	
1-1/2" Ring Shank Coil Nails	NLS 1.25" Coil Nails 60 Coils Per Box	7 Thermal and Moisture Protection	PRP Material	
Starter Shingle Labor (priced per FT)			PRP Labor	
Drip Edge Labor			PRP Labor	
Additional Part		7 Thermal and Moisture Protection	PRP Material	
Starter Shingles\Drip Edge\Ice and Water			Segment	Green
Starter Strips Shingles	Starter Shingle (Manufacturer)	7 Thermal and Moisture Protection	PRP Material	
1-1/2"x1-1/2" Steel Drip Edge	1.5 x 1.5 Drip Edge Gal Mil	7 Thermal and Moisture Protection	PRP Material	
Self-Adhere 1 Square Roll		7 Thermal and Moisture Protection	PRP Material	
1-1/2" Ring Shank Coil Nails	NLS 1.25" Coil Nails 60 Coils Per Box	7 Thermal and Moisture Protection	PRP Material	
Starter Shingle Labor (priced per FT)			PRP Labor	
Drip Edge Labor			PRP Labor	
Ice and Water Labor			PRP Labor	
Additional Part		7 Thermal and Moisture Protection	PRP Material	

PRP Residential Assemblies—Continued

Name	Description	Division	Type	Color
[-] Drip Edge			Segment	■
1-1/2"x1-1/2" Steel Drip Edge	1.5 x1.5 Drip Edge Gal Mil	7 Thermal and Moisture Protection	PRP Material	
1-1/2" Ring Shank Coil Nails	NLS 1.25" Coil Nails 60 Coils Per Box	7 Thermal and Moisture Protection	PRP Material	
Drip Edge Labor			PRP Labor	
Additional Part		7 Thermal and Moisture Protection	PRP Material	
[-] Drip Edge Ice and Water			Segment	■
1-1/2"x1-1/2" Steel Drip Edge	1.5 x1.5 Drip Edge Gal Mil	7 Thermal and Moisture Protection	PRP Material	
Self-Adhere 1 Square Roll		7 Thermal and Moisture Protection	PRP Material	
1-1/2" Ring Shank Coil Nails	NLS 1.25" Coil Nails 60 Coils Per Box	7 Thermal and Moisture Protection	PRP Material	
Drip Edge Labor			PRP Labor	
Ice and Water Labor			PRP Labor	
Additional Part		7 Thermal and Moisture Protection	PRP Material	
[-] Ice and Water			Segment	■
Self-Adhere 1 Square Roll		7 Thermal and Moisture Protection	PRP Material	
1-1/2" Ring Shank Coil Nails	NLS 1.25" Coil Nails 60 Coils Per Box	7 Thermal and Moisture Protection	PRP Material	
Ice and Water Labor			PRP Labor	
Additional Part		7 Thermal and Moisture Protection	PRP Material	

PRP Residential Assemblies—Continued

Name	Description	Division	Type	Color
Walls, Gables and Chimneys			Folder	Black
Segment			Folder	Black
Step Flashing			Segment	Orange
Step Flash Gal Mil 100 Pack	8x8 Step Tins Gal Mil 100 Pc per pack	7 Thermal and Moisture Protection	PRP Material	
Step Tin Labor (priced per FT)			PRP Labor	
Additional Part		7 Thermal and Moisture Protection	PRP Material	
Step Flashing\CounterFlashing			Segment	Orange
Step Flash Gal Mil 100 Pack	8x8 Step Tins Gal Mil 100 Pc per pack	7 Thermal and Moisture Protection	PRP Material	
CounterFlashing	10' Pieces	7 Thermal and Moisture Protection	PRP Material	
Step Tin Labor (priced per FT)			PRP Labor	
Caulk	30' per tube	7 Thermal and Moisture Protection	PRP Material	
Ice and Water Labor			PRP Labor	
Additional Part		7 Thermal and Moisture Protection	PRP Material	
Step Flashing\Ice and Water			Segment	Orange
Step Flash Gal Mil 100 Pack	8x8 Step Tins Gal Mil 100 Pc per pack	7 Thermal and Moisture Protection	PRP Material	
Ice and Water Self-Adhere 1 Sqr Roll		7 Thermal and Moisture Protection	PRP Material	
Step Tin Labor (priced per FT)			PRP Labor	
Ice and Water Labor			PRP Labor	
Additional Part		7 Thermal and Moisture Protection	PRP Material	
Head Wall Flashing			Segment	Cyan
Head Wall Flashing	Head Wall Flashing 4"x5" 120 deg	7 Thermal and Moisture Protection	PRP Material	
Head Wall Flashing Labor (priced per FT)			PRP Labor	
Additional Part		7 Thermal and Moisture Protection	PRP Material	
Head Wall Flashing\CounterFlashing			Segment	Cyan
Head Wall Flashing	Head Wall Flashing 4"x5" 120 deg	7 Thermal and Moisture Protection	PRP Material	
Head Wall Flashing Labor (priced per FT)			PRP Labor	
CounterFlashing	10' Pieces	7 Thermal and Moisture Protection	PRP Material	
CounterFlashing Labor			PRP Labor	
Additional Part		7 Thermal and Moisture Protection	PRP Material	
Head Wall Flashing\Ice and Water			Segment	Cyan
Head Wall Flashing	Head Wall Flashing 4"x5" 120 deg	7 Thermal and Moisture Protection	PRP Material	
Ice and Water Self-Adhere 1 Sqr Roll		7 Thermal and Moisture Protection	PRP Material	
Head Wall Flashing Labor (priced per FT)			PRP Labor	
Ice and Water Labor			PRP Labor	
Additional Part		7 Thermal and Moisture Protection	PRP Material	
Ice and Water			Segment	Cyan
Ice and Water Self-Adhere 1 Sqr Roll		7 Thermal and Moisture Protection	PRP Material	
Ice and Water Labor			PRP Labor	
Additional Part		7 Thermal and Moisture Protection	PRP Material	
J Metal			Segment	Yellow
J Metal	J Metal Flashing 4"x5"	7 Thermal and Moisture Protection	PRP Material	
J Metal Labor (priced per FT)			PRP Labor	
Ice and Water Self-Adhere 1 Sqr Roll		7 Thermal and Moisture Protection	PRP Material	
Additional Part		7 Thermal and Moisture Protection	PRP Material	
J Metal\Head Wall Flashing			Segment	Yellow
J Metal	J Metal Flashing 4"x5"	7 Thermal and Moisture Protection	PRP Material	
Head Wall Flashing	Head Wall Flashing 4"x5"x10' 120 deg	7 Thermal and Moisture Protection	PRP Material	
J Metal Labor			PRP Labor	
Head Wall Flashing Labor			PRP Labor	
Additional Part		7 Thermal and Moisture Protection	PRP Material	
J Metal\Head Wall Flashing\Ice and Water			Segment	Yellow
J Metal	J Metal Flashing 4"x5"	7 Thermal and Moisture Protection	PRP Material	
Ice and Water Self-Adhere 1 Sqr Roll		7 Thermal and Moisture Protection	PRP Material	
Head Wall Flashing	Head Wall Flashing 4"x5"x10' 120 deg	7 Thermal and Moisture Protection	PRP Material	
J Metal Labor (priced per FT)			PRP Labor	
Additional Part		7 Thermal and Moisture Protection	PRP Material	
Starter Strip			Segment	Yellow
Starter Strips Shingles	Starter Shingle (Manufacturer)	7 Thermal and Moisture Protection	PRP Material	
J Metal Labor (priced per FT)			PRP Labor	
Additional Part		7 Thermal and Moisture Protection	PRP Material	

PRP Residential Assemblies—Continued

Name	Description	Division	Type	Color
[-] Starter Strip\Drip Edge			Segment	Yellow
Starter Strips Shingles	Starter Shingle (Manufacturer)	7 Thermal and Moisture Protection	PRP Material	
1-1/2"x1-1/2" Steel Drip Edge	1.5 x1.5 Drip Edge Gal Mil	7 Thermal and Moisture Protection	PRP Material	
J Metal Labor (priced per FT)			PRP Labor	
Additional Part		7 Thermal and Moisture Protection	PRP Material	
[-] Starter Strip\Ice and Water			Segment	Yellow
Starter Strips Shingles	Starter Shingle (Manufacturer)	7 Thermal and Moisture Protection	PRP Material	
J Metal Labor (priced per FT)			PRP Labor	
Ice and Water Self-Adhere 1 Sqr Roll		7 Thermal and Moisture Protection	PRP Material	
Ice and Water Labor			PRP Labor	
Additional Part		7 Thermal and Moisture Protection	PRP Material	
[-] Starter Strip\Drip Edge\Ice and Water			Segment	Yellow
Starter Strips Shingles	Starter Shingle (Manufacturer)	7 Thermal and Moisture Protection	PRP Material	
1-1/2"x1-1/2" Steel Drip Edge	1.5 x1.5 Drip Edge Gal Mil	7 Thermal and Moisture Protection	PRP Material	
Ice and Water Self-Adhere 1 Sqr Roll		7 Thermal and Moisture Protection	PRP Material	
Ice and Water Labor			PRP Labor	
Drip Edge Labor			PRP Labor	
Starter Shingle Labor			PRP Labor	
Additional Part		7 Thermal and Moisture Protection	PRP Material	
[-] Linear			Folder	Black
[-] Step Flashing			Linear	Orange
Step Flash Gal Mil 100 Pack	8x8 Step Tins Gal Mil 100 Pc per pack	7 Thermal and Moisture Protection	PRP Material	
Step Tin Labor (priced per FT)			PRP Labor	
Additional Part		7 Thermal and Moisture Protection	PRP Material	
[-] Step Flashing\CounterFlashing			Linear	Orange
Step Flash Gal Mil 100 Pack	8x8 Step Tins Gal Mil 100 Pc per pack	7 Thermal and Moisture Protection	PRP Material	
CounterFlashing	10' Pieces	7 Thermal and Moisture Protection	PRP Material	
Step Tin Labor (priced per FT)			PRP Labor	
Cauk	30' per tube	7 Thermal and Moisture Protection	PRP Material	
Ice and Water Labor			PRP Labor	
Additional Part		7 Thermal and Moisture Protection	PRP Material	
[-] Step Flashing\Ice and Water			Linear	Orange
Step Flash Gal Mil 100 Pack	8x8 Step Tins Gal Mil 100 Pc per pack	7 Thermal and Moisture Protection	PRP Material	
Ice and Water Self-Adhere 1 Sqr Roll		7 Thermal and Moisture Protection	PRP Material	
Step Tin Labor (priced per FT)			PRP Labor	
Ice and Water Labor			PRP Labor	
Additional Part		7 Thermal and Moisture Protection	PRP Material	
[-] Head Wall Flashing			Linear	Cyan
Head Wall Flashing	Head Wall Flashing 4"x5" 120 deg	7 Thermal and Moisture Protection	PRP Material	
Head Wall Flashing Labor (priced per FT)			PRP Labor	
Additional Part		7 Thermal and Moisture Protection	PRP Material	
[-] Head Wall Flashing\CounterFlashing			Linear	Cyan
Head Wall Flashing	Head Wall Flashing 4"x5" 120 deg	7 Thermal and Moisture Protection	PRP Material	
Head Wall Flashing Labor (priced per FT)			PRP Labor	
CounterFlashing	10' Pieces	7 Thermal and Moisture Protection	PRP Material	
CounterFlashing Labor			PRP Labor	
Additional Part		7 Thermal and Moisture Protection	PRP Material	
[-] Head Wall Flashing\CounterFlashing			Segment	Cyan
Head Wall Flashing	Head Wall Flashing 4"x5" 120 deg	7 Thermal and Moisture Protection	PRP Material	
CounterFlashing	10' Pieces	7 Thermal and Moisture Protection	PRP Material	
Head Wall Flashing Labor (priced per FT)			PRP Labor	
CounterFlashing Labor			PRP Labor	
Additional Part		7 Thermal and Moisture Protection	PRP Material	
[-] Head Wall Flashing\Ice and Water			Segment	Cyan
Head Wall Flashing	Head Wall Flashing 4"x5" 120 deg	7 Thermal and Moisture Protection	PRP Material	
Ice and Water Self-Adhere 1 Sqr Roll		7 Thermal and Moisture Protection	PRP Material	
Head Wall Flashing Labor (priced per FT)			PRP Labor	
Ice and Water Labor			PRP Labor	
Additional Part		7 Thermal and Moisture Protection	PRP Material	

PRP Residential Assemblies—Continued

Name	Description	Division	Type	Color
Head Wall Flashing\Ice and Water			Linear	
Head Wall Flashing	Head Wall Flashing 4"x5" 120 deg	7 Thermal and Moisture Protection	PRP Material	
Ice and Water Self-Adhere 1 Sqr Roll		7 Thermal and Moisture Protection	PRP Material	
Head Wall Flashing Labor (priced per FT)			PRP Labor	
Ice and Water Labor			PRP Labor	
Additional Part		7 Thermal and Moisture Protection	PRP Material	
Head Wall Flashing\CounterFlashing			Linear	
Head Wall Flashing	Head Wall Flashing 4"x5" 120 deg	7 Thermal and Moisture Protection	PRP Material	
CounterFlashing	10' Pieces	7 Thermal and Moisture Protection	PRP Material	
Head Wall Flashing Labor (priced per FT)			PRP Labor	
CounterFlashing Labor			PRP Labor	
Additional Part		7 Thermal and Moisture Protection	PRP Material	
Ice and Water			Linear	
Ice and Water Self-Adhere 1 Sqr Roll		7 Thermal and Moisture Protection	PRP Material	
Ice and Water Labor			PRP Labor	
Additional Part		7 Thermal and Moisture Protection	PRP Material	
J Metal			Linear	
J Metal	J Metal Flashing 4"x5"	7 Thermal and Moisture Protection	PRP Material	
J Metal Labor (priced per FT)			PRP Labor	
Ice and Water Self-Adhere 1 Sqr Roll		7 Thermal and Moisture Protection	PRP Material	
Additional Part		7 Thermal and Moisture Protection	PRP Material	
J Metal\Head Wall Flashing			Linear	
J Metal	J Metal Flashing 4"x5"	7 Thermal and Moisture Protection	PRP Material	
Head Wall Flashing	Head Wall Flashing 4"x5"x10' 120 deg	7 Thermal and Moisture Protection	PRP Material	
J Metal Labor			PRP Labor	
Head Wall Flashing Labor			PRP Labor	
Additional Part		7 Thermal and Moisture Protection	PRP Material	
J Metal\Head Wall Flashing\Ice and Water			Linear	
J Metal	J Metal Flashing 4"x5"	7 Thermal and Moisture Protection	PRP Material	
Ice and Water Self-Adhere 1 Sqr Roll		7 Thermal and Moisture Protection	PRP Material	
Head Wall Flashing	Head Wall Flashing 4"x5"x10' 120 deg	7 Thermal and Moisture Protection	PRP Material	
J Metal Labor (priced per FT)			PRP Labor	
Additional Part		7 Thermal and Moisture Protection	PRP Material	
Starter Strip			Linear	
Starter Strips Shingles	Starter Shingle (Manufacturer)	7 Thermal and Moisture Protection	PRP Material	
J Metal Labor (priced per FT)			PRP Labor	
Additional Part		7 Thermal and Moisture Protection	PRP Material	
Starter Strip\Drip Edge			Linear	
Starter Strips Shingles	Starter Shingle (Manufacturer)	7 Thermal and Moisture Protection	PRP Material	
J Metal Labor (priced per FT)			PRP Labor	
1-1/2"x1-1/2" Steel Drip Edge	1.5 x 1.5 Drip Edge Gal Mil	7 Thermal and Moisture Protection	PRP Material	
Additional Part		7 Thermal and Moisture Protection	PRP Material	
J Metal\Head Wall Flashing\Ice and Water			Linear	
J Metal	J Metal Flashing 4"x5"	7 Thermal and Moisture Protection	PRP Material	
Head Wall Flashing	Head Wall Flashing 4"x5"x10' 120 deg	7 Thermal and Moisture Protection	PRP Material	
Ice and Water Self-Adhere 1 Sqr Roll		7 Thermal and Moisture Protection	PRP Material	
J Metal Labor (priced per FT)			PRP Labor	
Additional Part		7 Thermal and Moisture Protection	PRP Material	
Starter Strip\Drip Edge			Linear	
Starter Strips Shingles	Starter Shingle (Manufacturer)	7 Thermal and Moisture Protection	PRP Material	
1-1/2"x1-1/2" Steel Drip Edge	1.5 x 1.5 Drip Edge Gal Mil	7 Thermal and Moisture Protection	PRP Material	
J Metal Labor (priced per FT)			PRP Labor	
Additional Part		7 Thermal and Moisture Protection	PRP Material	
Starter Strip\Ice and Water			Linear	
Starter Strips Shingles	Starter Shingle (Manufacturer)	7 Thermal and Moisture Protection	PRP Material	
J Metal Labor (priced per FT)			PRP Labor	
Ice and Water Self-Adhere 1 Sqr Roll		7 Thermal and Moisture Protection	PRP Material	
Ice and Water Labor			PRP Labor	
Additional Part		7 Thermal and Moisture Protection	PRP Material	

PRP Residential Assemblies—Continued

Name	Description	Division	Type	Color
Starter Strip/Drip Edge/Ice and Water			Linear	Yellow
Starter Strips Shingles	Starter Shingle (Manufacturer)	7 Thermal and Moisture Protection	PRP Material	
1-1/2"x1-1/2" Steel Drip Edge	1.5 x1.5 Drip Edge Gal Ml	7 Thermal and Moisture Protection	PRP Material	
Ice and Water Self-Adhere 1 Sqr Roll		7 Thermal and Moisture Protection	PRP Material	
Ice and Water Labor			PRP Labor	
Drip Edge Labor			PRP Labor	
Starter Shingle Labor			PRP Labor	
Additional Part		7 Thermal and Moisture Protection	PRP Material	
Hips and Valley			Folder	Black
Hip Shingles			Hip-Valley Tool	Black
25 Yr 3 Tab Shingle	1 Bundle Covers 33'	7 Thermal and Moisture Protection	PRP Material	
Hip Labor (priced per FT)			PRP Labor	
1-1/4" Ring Shank Coil Nails	60 Coils Per Box	7 Thermal and Moisture Protection	PRP Material	
Additional Part		7 Thermal and Moisture Protection	PRP Material	
Hip Shingles/Ridge Vent			Hip-Valley Tool	Black
25 Yr 3 Tab Shingle	1 Bundle Covers 33'	7 Thermal and Moisture Protection	PRP Material	
Ridge Vent 20' Roll	Ridge Vent Priced per FT (Manufacturer)	7 Thermal and Moisture Protection	PRP Material	
Hip Labor (priced per FT)			PRP Labor	
1-1/4" Ring Shank Coil Nails	60 Coils Per Box	7 Thermal and Moisture Protection	PRP Material	
Ridge Vent Labor			PRP Labor	
Additional Part		7 Thermal and Moisture Protection	PRP Material	
Hip Shingles/Ice and Water			Hip-Valley Tool	Black
25 Yr 3 Tab Shingle	1 Bundle Covers 33'	7 Thermal and Moisture Protection	PRP Material	
Ice and Water Self-Adhere 1 Sqr Roll		7 Thermal and Moisture Protection	PRP Material	
Hip Labor (priced per FT)			PRP Labor	
1-1/4" Ring Shank Coil Nails	60 Coils Per Box	7 Thermal and Moisture Protection	PRP Material	
Additional Part		7 Thermal and Moisture Protection	PRP Material	
Hip Metal Ridge Roll			Hip-Valley Tool	Black
Ridge Roll 10"	10' Lengths, 10 per Bundle	7 Thermal and Moisture Protection	PRP Material	
1-1/4" Ring Shank Coil Nails	60 Coils Per Box	7 Thermal and Moisture Protection	PRP Material	
Hip Labor (priced per FT)			PRP Labor	
Additional Part		7 Thermal and Moisture Protection	PRP Material	
Hip Shingles/Ridge Vent/Ice and Water			Hip-Valley Tool	Black
25 Yr 3 Tab Shingle	1 Bundle Covers 33'	7 Thermal and Moisture Protection	PRP Material	
Ridge Vent 20' Roll	Ridge Vent Priced per FT (Manufacturer)	7 Thermal and Moisture Protection	PRP Material	
1-1/4" Ring Shank Coil Nails	60 Coils Per Box	7 Thermal and Moisture Protection	PRP Material	
Ice and Water Self-Adhere 1 Sqr Roll		7 Thermal and Moisture Protection	PRP Material	
Hip Labor (priced per FT)			PRP Labor	
Ridge Vent Labor			PRP Labor	
Ice and Water Labor			PRP Labor	
Additional Part		7 Thermal and Moisture Protection	PRP Material	
Valley with Metal Flashing			Hip-Valley Tool	Red
Valley Roll Steel 18"	50' Lengths	7 Thermal and Moisture Protection	PRP Material	
Valley Labor (priced per FT)			PRP Labor	
Additional Part		7 Thermal and Moisture Protection	PRP Material	
Valley with Self Adhering I/W Shield			Hip-Valley Tool	Cyan
Self-Adhere 1 Square Roll		7 Thermal and Moisture Protection	PRP Material	
Valley Labor (priced per FT)			PRP Labor	
Additional Part		7 Thermal and Moisture Protection	PRP Material	
Valley with Tarco ValleyFlash			Hip-Valley Tool	Blue
ValleyFlash	Tarco Valley Shield	7 Thermal and Moisture Protection	PRP Material	
Valley Labor (priced per FT)			PRP Labor	
Additional Part		7 Thermal and Moisture Protection	PRP Material	

PRP Residential Assemblies—Continued

Name	Description	Division	Type	Color
Elevation View	Side of Roof		Folder	Black
Ridges and Eaves			Folder	Black
Linear			Folder	Black
Ridge Vent			Linear	Light Blue
Ridge Vent 50' Roll	Ridge Vent Priced per FT (Manufacturer)	7 Thermal and Moisture Protection	PRP Material	
Ridge Vent Labor (priced per FT)			PRP Labor	
Additional Part		7 Thermal and Moisture Protection	PRP Material	
Metal Ridge Cap			Linear	Light Blue
Ridge Roll 10"	10' Lengths, 10 per Bundle	7 Thermal and Moisture Protection	PRP Material	
Ridge Vent Labor (priced per FT)			PRP Labor	
Additional Part		7 Thermal and Moisture Protection	PRP Material	
Ridge Shingles			Linear	Red
Ridge Cap Shingles	1 Bundle Covers 20'	7 Thermal and Moisture Protection	PRP Material	
1-1/2" Ring Shank Coil Nails	NLS 1.25" Coil Nails 60 Coils Per Box	7 Thermal and Moisture Protection	PRP Material	
Ridge Labor (priced per FT)			PRP Labor	
Additional Part		7 Thermal and Moisture Protection	PRP Material	
Ridge Shingles\Ridge Vent			Linear	Red
Ridge Cap Shingles	1 Bundle Covers 20'	7 Thermal and Moisture Protection	PRP Material	
Ridge Vent 20' Roll	Ridge Vent Priced per FT (Manufacturer)	7 Thermal and Moisture Protection	PRP Material	
1-1/2" Ring Shank Coil Nails	NLS 1.25" Coil Nails 60 Coils Per Box	7 Thermal and Moisture Protection	PRP Material	
Ridge Labor (priced per FT)			PRP Labor	
Additional Part		7 Thermal and Moisture Protection	PRP Material	
Ridge Shingles\Ice and Water			Linear	Red
Ridge Cap Shingles	1 Bundle Covers 20'	7 Thermal and Moisture Protection	PRP Material	
Self-Adhere 1 Square Roll		7 Thermal and Moisture Protection	PRP Material	
1-1/2" Ring Shank Coil Nails	NLS 1.25" Coil Nails 60 Coils Per Box	7 Thermal and Moisture Protection	PRP Material	
Ridge Labor (priced per FT)			PRP Labor	
Additional Part		7 Thermal and Moisture Protection	PRP Material	
Starter Shingles			Linear	Orange
Starter Strips Shingles	Starter Shingle (Manufacturer)	7 Thermal and Moisture Protection	PRP Material	
1-1/2" Ring Shank Coil Nails	NLS 1.25" Coil Nails 60 Coils Per Box	7 Thermal and Moisture Protection	PRP Material	
Starter Shingle Labor (priced per FT)			PRP Labor	
Additional Part		7 Thermal and Moisture Protection	PRP Material	
Starter Shingles\Drip Edge			Linear	Green
Starter Strips Shingles	Starter Shingle (Manufacturer)	7 Thermal and Moisture Protection	PRP Material	
1-1/2"x1-1/2" Steel Drip Edge	1.5 x1.5 Drip Edge Gal Mil	7 Thermal and Moisture Protection	PRP Material	
1-1/2" Ring Shank Coil Nails	NLS 1.25" Coil Nails 60 Coils Per Box	7 Thermal and Moisture Protection	PRP Material	
Starter Shingle Labor (priced per FT)			PRP Labor	
Drip Edge Labor			PRP Labor	
Additional Part		7 Thermal and Moisture Protection	PRP Material	
Starter Shingles\Drip Edge\Ice and Water			Linear	Green
Starter Strips Shingles	Starter Shingle (Manufacturer)	7 Thermal and Moisture Protection	PRP Material	
1-1/2"x1-1/2" Steel Drip Edge	1.5 x1.5 Drip Edge Gal Mil	7 Thermal and Moisture Protection	PRP Material	
Self-Adhere 1 Square Roll		7 Thermal and Moisture Protection	PRP Material	
1-1/2" Ring Shank Coil Nails	NLS 1.25" Coil Nails 60 Coils Per Box	7 Thermal and Moisture Protection	PRP Material	
Starter Shingle Labor (priced per FT)			PRP Labor	
Drip Edge Labor			PRP Labor	
Ice and Water Labor			PRP Labor	
Additional Part		7 Thermal and Moisture Protection	PRP Material	
Drip Edge			Linear	Green
1-1/2"x1-1/2" Steel Drip Edge	1.5 x1.5 Drip Edge Gal Mil	7 Thermal and Moisture Protection	PRP Material	
1-1/2" Ring Shank Coil Nails	NLS 1.25" Coil Nails 60 Coils Per Box	7 Thermal and Moisture Protection	PRP Material	
Drip Edge Labor			PRP Labor	
Additional Part		7 Thermal and Moisture Protection	PRP Material	
Drip Edge\Ice and Water			Linear	Green
1-1/2"x1-1/2" Steel Drip Edge	1.5 x1.5 Drip Edge Gal Mil	7 Thermal and Moisture Protection	PRP Material	
Self-Adhere 1 Square Roll		7 Thermal and Moisture Protection	PRP Material	
1-1/2" Ring Shank Coil Nails	NLS 1.25" Coil Nails 60 Coils Per Box	7 Thermal and Moisture Protection	PRP Material	
Drip Edge Labor			PRP Labor	
Ice and Water Labor			PRP Labor	
Additional Part		7 Thermal and Moisture Protection	PRP Material	



PRP Residential Assemblies—Continued

Name	Description	Division	Type	Color
Ice and Water			Linear	Green
Self-Adhere 1 Square Roll		7 Thermal and Moisture Protection	PRP Material	
1-1/2" Ring Shank Coil Nails	NLS 1.25" Coil Nails 60 Coils Per Box	7 Thermal and Moisture Protection	PRP Material	
Ice and Water Labor			PRP Labor	
Additional Part		7 Thermal and Moisture Protection	PRP Material	
Segment			Folder	Black
Ridge Shingles			Segment	Red
Ridge Cap Shingles	1 Bundle Covers 20'	7 Thermal and Moisture Protection	PRP Material	
1-1/2" Ring Shank Coil Nails	NLS 1.25" Coil Nails 60 Coils Per Box	7 Thermal and Moisture Protection	PRP Material	
Ridge Labor (priced per FT)			PRP Labor	
Additional Part		7 Thermal and Moisture Protection	PRP Material	
Ridge Shingles\Ridge Vent			Segment	Red
Ridge Cap Shingles	1 Bundle Covers 20'	7 Thermal and Moisture Protection	PRP Material	
Ridge Vent 20' Roll	Ridge Vent Priced per FT (Manufacturer)	7 Thermal and Moisture Protection	PRP Material	
1-1/2" Ring Shank Coil Nails	NLS 1.25" Coil Nails 60 Coils Per Box	7 Thermal and Moisture Protection	PRP Material	
Ridge Labor (priced per FT)			PRP Labor	
Additional Part		7 Thermal and Moisture Protection	PRP Material	
Ridge Vent			Segment	Blue
Ridge Vent 50' Roll	Ridge Vent Priced per FT (Manufacturer)	7 Thermal and Moisture Protection	PRP Material	
Ridge Vent Labor (priced per FT)			PRP Labor	
Additional Part		7 Thermal and Moisture Protection	PRP Material	
Starter Shingles			Segment	Orange
Starter Strips Shingles	Starter Shingle (Manufacturer)	7 Thermal and Moisture Protection	PRP Material	
1-1/2" Ring Shank Coil Nails	NLS 1.25" Coil Nails 60 Coils Per Box	7 Thermal and Moisture Protection	PRP Material	
Starter Shingle Labor (priced per FT)			PRP Labor	
Additional Part		7 Thermal and Moisture Protection	PRP Material	
Starter Shingles\Drip Edge			Segment	Green
Starter Strips Shingles	Starter Shingle (Manufacturer)	7 Thermal and Moisture Protection	PRP Material	
1-1/2"x1-1/2" Steel Drip Edge	1.5 x 1.5 Drip Edge Gal Mil	7 Thermal and Moisture Protection	PRP Material	
1-1/2" Ring Shank Coil Nails	NLS 1.25" Coil Nails 60 Coils Per Box	7 Thermal and Moisture Protection	PRP Material	
Starter Shingle Labor (priced per FT)			PRP Labor	
Drip Edge Labor			PRP Labor	
Additional Part		7 Thermal and Moisture Protection	PRP Material	
Starter Shingles\Drip Edge\Ice and Water			Segment	Green
Starter Strips Shingles	Starter Shingle (Manufacturer)	7 Thermal and Moisture Protection	PRP Material	
1-1/2"x1-1/2" Steel Drip Edge	1.5 x 1.5 Drip Edge Gal Mil	7 Thermal and Moisture Protection	PRP Material	
Self-Adhere 1 Square Roll		7 Thermal and Moisture Protection	PRP Material	
1-1/2" Ring Shank Coil Nails	NLS 1.25" Coil Nails 60 Coils Per Box	7 Thermal and Moisture Protection	PRP Material	
Starter Shingle Labor (priced per FT)			PRP Labor	
Drip Edge Labor			PRP Labor	
Ice and Water Labor			PRP Labor	
Additional Part		7 Thermal and Moisture Protection	PRP Material	
Drip Edge\Ice and Water			Segment	Green
1-1/2"x1-1/2" Steel Drip Edge	1.5 x 1.5 Drip Edge Gal Mil	7 Thermal and Moisture Protection	PRP Material	
Self-Adhere 1 Square Roll		7 Thermal and Moisture Protection	PRP Material	
1-1/2" Ring Shank Coil Nails	NLS 1.25" Coil Nails 60 Coils Per Box	7 Thermal and Moisture Protection	PRP Material	
Drip Edge Labor			PRP Labor	
Ice and Water Labor			PRP Labor	
Additional Part		7 Thermal and Moisture Protection	PRP Material	
Drip Edge			Segment	Green
1-1/2"x1-1/2" Steel Drip Edge	1.5 x 1.5 Drip Edge Gal Mil	7 Thermal and Moisture Protection	PRP Material	
1-1/2" Ring Shank Coil Nails	NLS 1.25" Coil Nails 60 Coils Per Box	7 Thermal and Moisture Protection	PRP Material	
Drip Edge Labor			PRP Labor	
Additional Part		7 Thermal and Moisture Protection	PRP Material	
Ice and Water			Segment	Green
Self-Adhere 1 Square Roll		7 Thermal and Moisture Protection	PRP Material	
1-1/2" Ring Shank Coil Nails	NLS 1.25" Coil Nails 60 Coils Per Box	7 Thermal and Moisture Protection	PRP Material	
Ice and Water Labor			PRP Labor	
Additional Part		7 Thermal and Moisture Protection	PRP Material	

PRP Residential Assemblies—Continued

Name	Description	Division	Type	Color
Walls, Gables and Chimneys			Folder	
Segment			Folder	
Starter Strip			Segment	Yellow
Starter Strips Shingles	Starter Shingle (Manufacturer)	7 Thermal and Moisture Protection	PRP Material	
J Metal Labor (priced per FT)			PRP Labor	
Additional Part		7 Thermal and Moisture Protection	PRP Material	
Starter Strip\Drip Edge			Segment	Yellow
Starter Strips Shingles	Starter Shingle (Manufacturer)	7 Thermal and Moisture Protection	PRP Material	
1-1/2"x1-1/2" Steel Drip Edge	1.5 x1.5 Drip Edge Gal Mil	7 Thermal and Moisture Protection	PRP Material	
J Metal Labor (priced per FT)			PRP Labor	
Additional Part		7 Thermal and Moisture Protection	PRP Material	
Starter Strip\Ice and Water			Segment	Yellow
Starter Strips Shingles	Starter Shingle (Manufacturer)	7 Thermal and Moisture Protection	PRP Material	
Ice and Water Self-Adhere 1 Sqr Roll		7 Thermal and Moisture Protection	PRP Material	
J Metal Labor (priced per FT)			PRP Labor	
Ice and Water Labor			PRP Labor	
Additional Part		7 Thermal and Moisture Protection	PRP Material	
Starter Strip\Drip Edge\Ice and Water			Segment	Yellow
Starter Strips Shingles	Starter Shingle (Manufacturer)	7 Thermal and Moisture Protection	PRP Material	
1-1/2"x1-1/2" Steel Drip Edge	1.5 x1.5 Drip Edge Gal Mil	7 Thermal and Moisture Protection	PRP Material	
Ice and Water Self-Adhere 1 Sqr Roll		7 Thermal and Moisture Protection	PRP Material	
Ice and Water Labor			PRP Labor	
Drip Edge Labor			PRP Labor	
Starter Shingle Labor			PRP Labor	
Additional Part		7 Thermal and Moisture Protection	PRP Material	
J Metal			Segment	Yellow
J Metal	J Metal Flashing 4"x5"	7 Thermal and Moisture Protection	PRP Material	
Ice and Water Self-Adhere 1 Sqr Roll		7 Thermal and Moisture Protection	PRP Material	
J Metal Labor (priced per FT)			PRP Labor	
Additional Part		7 Thermal and Moisture Protection	PRP Material	
J Metal\Head Wall Flashing			Segment	Yellow
J Metal	J Metal Flashing 4"x5"	7 Thermal and Moisture Protection	PRP Material	
Head Wall Flashing	Head Wall Flashing 4"x5"x10' 120 deg	7 Thermal and Moisture Protection	PRP Material	
J Metal Labor			PRP Labor	
Head Wall Flashing Labor			PRP Labor	
Additional Part		7 Thermal and Moisture Protection	PRP Material	
J Metal\Head Wall Flashing\Ice and Water			Segment	Yellow
J Metal	J Metal Flashing 4"x5"	7 Thermal and Moisture Protection	PRP Material	
Head Wall Flashing	Head Wall Flashing 4"x5"x10' 120 deg	7 Thermal and Moisture Protection	PRP Material	
Ice and Water Self-Adhere 1 Sqr Roll		7 Thermal and Moisture Protection	PRP Material	
J Metal Labor (priced per FT)			PRP Labor	
Additional Part		7 Thermal and Moisture Protection	PRP Material	
Ice and Water			Segment	Cyan
Ice and Water Self-Adhere 1 Sqr Roll		7 Thermal and Moisture Protection	PRP Material	
Ice and Water Labor			PRP Labor	
Additional Part		7 Thermal and Moisture Protection	PRP Material	
Head Wall Flashing			Segment	Cyan
Head Wall Flashing	Head Wall Flashing 4"x5" 120 deg	7 Thermal and Moisture Protection	PRP Material	
Head Wall Flashing Labor (priced per FT)			PRP Labor	
Additional Part		7 Thermal and Moisture Protection	PRP Material	
Head Wall Flashing\Ice and Water			Segment	Cyan
Head Wall Flashing	Head Wall Flashing 4"x5" 120 deg	7 Thermal and Moisture Protection	PRP Material	
Ice and Water Self-Adhere 1 Sqr Roll		7 Thermal and Moisture Protection	PRP Material	
Head Wall Flashing Labor (priced per FT)			PRP Labor	
Ice and Water Labor			PRP Labor	
Additional Part		7 Thermal and Moisture Protection	PRP Material	

PRP Residential Assemblies—Continued

Name	Description	Division	Type	Color
Head Wall Flashing\CounterFlashing			Segment	
Head Wall Flashing	Head Wall Flashing 4"x5" 120 deg	7 Thermal and Moisture Protection	PRP Material	
CounterFlashing	10' Pieces	7 Thermal and Moisture Protection	PRP Material	
Head Wall Flashing Labor (priced per FT)			PRP Labor	
CounterFlashing Labor			PRP Labor	
Additional Part		7 Thermal and Moisture Protection	PRP Material	
Step Flashing			Segment	
Step Flash Gal Mil 100 Pack	8x8 Step Tins Gal Mil 100 Pc per pack	7 Thermal and Moisture Protection	PRP Material	
Step Tin Labor (priced per FT)			PRP Labor	
Additional Part		7 Thermal and Moisture Protection	PRP Material	
Step Flashing\Ice and Water			Segment	
Step Flash Gal Mil 100 Pack	8x8 Step Tins Gal Mil 100 Pc per pack	7 Thermal and Moisture Protection	PRP Material	
Ice and Water Self-Adhere 1 Sqr Roll		7 Thermal and Moisture Protection	PRP Material	
Step Tin Labor (priced per FT)			PRP Labor	
Ice and Water Labor			PRP Labor	
Additional Part		7 Thermal and Moisture Protection	PRP Material	
Step Flashing\CounterFlashing			Segment	
Step Flash Gal Mil 100 Pack	8x8 Step Tins Gal Mil 100 Pc per pack	7 Thermal and Moisture Protection	PRP Material	
CounterFlashing	10' Pieces	7 Thermal and Moisture Protection	PRP Material	
Caulk	30' per tube	7 Thermal and Moisture Protection	PRP Material	
Step Tin Labor (priced per FT)			PRP Labor	
Ice and Water Labor			PRP Labor	
Additional Part		7 Thermal and Moisture Protection	PRP Material	
Linear			Folder	
Step Flashing			Linear	
Step Flash Gal Mil 100 Pack	8x8 Step Tins Gal Mil 100 Pc per pack	7 Thermal and Moisture Protection	PRP Material	
Step Tin Labor (priced per FT)			PRP Labor	
Additional Part		7 Thermal and Moisture Protection	PRP Material	
Step Flashing\Ice and Water			Linear	
Step Flash Gal Mil 100 Pack	8x8 Step Tins Gal Mil 100 Pc per pack	7 Thermal and Moisture Protection	PRP Material	
Ice and Water Self-Adhere 1 Sqr Roll		7 Thermal and Moisture Protection	PRP Material	
Step Tin Labor (priced per FT)			PRP Labor	
Ice and Water Labor			PRP Labor	
Additional Part		7 Thermal and Moisture Protection	PRP Material	
Step Flashing\CounterFlashing			Linear	
Step Flash Gal Mil 100 Pack	8x8 Step Tins Gal Mil 100 Pc per pack	7 Thermal and Moisture Protection	PRP Material	
CounterFlashing	10' Pieces	7 Thermal and Moisture Protection	PRP Material	
Caulk	30' per tube	7 Thermal and Moisture Protection	PRP Material	
Step Tin Labor (priced per FT)			PRP Labor	
Ice and Water Labor			PRP Labor	
Additional Part		7 Thermal and Moisture Protection	PRP Material	
Head Wall Flashing			Linear	
Head Wall Flashing	Head Wall Flashing 4"x5" 120 deg	7 Thermal and Moisture Protection	PRP Material	
Head Wall Flashing Labor (priced per FT)			PRP Labor	
Additional Part		7 Thermal and Moisture Protection	PRP Material	
Head Wall Flashing\CounterFlashing			Linear	
Head Wall Flashing	Head Wall Flashing 4"x5" 120 deg	7 Thermal and Moisture Protection	PRP Material	
CounterFlashing	10' Pieces	7 Thermal and Moisture Protection	PRP Material	
Head Wall Flashing Labor (priced per FT)			PRP Labor	
CounterFlashing Labor			PRP Labor	
Additional Part		7 Thermal and Moisture Protection	PRP Material	
Head Wall Flashing\Ice and Water			Linear	
Head Wall Flashing	Head Wall Flashing 4"x5" 120 deg	7 Thermal and Moisture Protection	PRP Material	
Ice and Water Self-Adhere 1 Sqr Roll		7 Thermal and Moisture Protection	PRP Material	
Head Wall Flashing Labor (priced per FT)			PRP Labor	
Ice and Water Labor			PRP Labor	
Additional Part		7 Thermal and Moisture Protection	PRP Material	
Ice and Water			Linear	
Ice and Water Self-Adhere 1 Sqr Roll		7 Thermal and Moisture Protection	PRP Material	
Ice and Water Labor			PRP Labor	
Additional Part		7 Thermal and Moisture Protection	PRP Material	

PRP Residential Assemblies—Continued

Name	Description	Division	Type	Color
[-] J Metal			Linear	
J Metal	J Metal Flashing 4"x5"	7 Thermal and Moisture Protection	PRP Material	
Ice and Water Self-Adhere 1 Sqr Roll		7 Thermal and Moisture Protection	PRP Material	
J Metal Labor (priced per FT)			PRP Labor	
Additional Part		7 Thermal and Moisture Protection	PRP Material	
[-] J Metal\Head Wall Flashing			Linear	
J Metal	J Metal Flashing 4"x5"	7 Thermal and Moisture Protection	PRP Material	
Head Wall Flashing	Head Wall Flashing 4"x5"x10' 120 deg	7 Thermal and Moisture Protection	PRP Material	
J Metal Labor			PRP Labor	
Head Wall Flashing Labor			PRP Labor	
Additional Part		7 Thermal and Moisture Protection	PRP Material	
[-] J Metal\Head Wall Flashing\Ice and Water			Linear	
J Metal	J Metal Flashing 4"x5"	7 Thermal and Moisture Protection	PRP Material	
Head Wall Flashing	Head Wall Flashing 4"x5"x10' 120 deg	7 Thermal and Moisture Protection	PRP Material	
Ice and Water Self-Adhere 1 Sqr Roll		7 Thermal and Moisture Protection	PRP Material	
J Metal Labor (priced per FT)			PRP Labor	
Additional Part		7 Thermal and Moisture Protection	PRP Material	
[-] Starter Strip			Linear	
Starter Strips Shingles	Starter Shingle (Manufacturer)	7 Thermal and Moisture Protection	PRP Material	
J Metal Labor (priced per FT)			PRP Labor	
Additional Part		7 Thermal and Moisture Protection	PRP Material	
[-] Starter Strip\Ice and Water			Linear	
Starter Strips Shingles	Starter Shingle (Manufacturer)	7 Thermal and Moisture Protection	PRP Material	
Ice and Water Self-Adhere 1 Sqr Roll		7 Thermal and Moisture Protection	PRP Material	
J Metal Labor (priced per FT)			PRP Labor	
Ice and Water Labor			PRP Labor	
Additional Part		7 Thermal and Moisture Protection	PRP Material	
[-] Starter Strip\Drip Edge\Ice and Water			Linear	
Starter Strips Shingles	Starter Shingle (Manufacturer)	7 Thermal and Moisture Protection	PRP Material	
1-1/2"x1-1/2" Steel Drip Edge	1.5 x 1.5 Drip Edge Gal Mil	7 Thermal and Moisture Protection	PRP Material	
Ice and Water Self-Adhere 1 Sqr Roll		7 Thermal and Moisture Protection	PRP Material	
Ice and Water Labor			PRP Labor	
Drip Edge Labor			PRP Labor	
Starter Shingle Labor			PRP Labor	
Additional Part		7 Thermal and Moisture Protection	PRP Material	
[-] Starter Strip\Drip Edge			Linear	
Starter Strips Shingles	Starter Shingle (Manufacturer)	7 Thermal and Moisture Protection	PRP Material	
1-1/2"x1-1/2" Steel Drip Edge	1.5 x 1.5 Drip Edge Gal Mil	7 Thermal and Moisture Protection	PRP Material	
J Metal Labor (priced per FT)			PRP Labor	
Additional Part		7 Thermal and Moisture Protection	PRP Material	

PRP Residential Assemblies—Continued

Name	Description	Division	Type	Color
<ul style="list-style-type: none"> Hips and Valley 			Folder	
<ul style="list-style-type: none"> <ul style="list-style-type: none"> Hip Shingles 			Hip-Valley Tool	
<ul style="list-style-type: none"> <ul style="list-style-type: none"> <ul style="list-style-type: none"> 25 Yr 3 Tab Shingle 	1 Bundle Covers 33'	7 Thermal and Moisture Protection	PRP Material	
<ul style="list-style-type: none"> <ul style="list-style-type: none"> <ul style="list-style-type: none"> 1-1/4" Ring Shank Coil Nails 	60 Coils Per Box	7 Thermal and Moisture Protection	PRP Material	
<ul style="list-style-type: none"> <ul style="list-style-type: none"> <ul style="list-style-type: none"> Hip Labor (priced per FT) 			PRP Labor	
<ul style="list-style-type: none"> <ul style="list-style-type: none"> <ul style="list-style-type: none"> Additional Part 		7 Thermal and Moisture Protection	PRP Material	
<ul style="list-style-type: none"> <ul style="list-style-type: none"> Hip Shingles\Ridge Vent\Ice and Water 			Hip-Valley Tool	
<ul style="list-style-type: none"> <ul style="list-style-type: none"> <ul style="list-style-type: none"> 25 Yr 3 Tab Shingle 	1 Bundle Covers 33'	7 Thermal and Moisture Protection	PRP Material	
<ul style="list-style-type: none"> <ul style="list-style-type: none"> <ul style="list-style-type: none"> 1-1/4" Ring Shank Coil Nails 	60 Coils Per Box	7 Thermal and Moisture Protection	PRP Material	
<ul style="list-style-type: none"> <ul style="list-style-type: none"> <ul style="list-style-type: none"> Ridge Vent 20' Roll 	Ridge Vent Priced per FT (Manufacturer)	7 Thermal and Moisture Protection	PRP Material	
<ul style="list-style-type: none"> <ul style="list-style-type: none"> <ul style="list-style-type: none"> Ice and Water Self-Adhere 1 Sqr Roll 		7 Thermal and Moisture Protection	PRP Material	
<ul style="list-style-type: none"> <ul style="list-style-type: none"> <ul style="list-style-type: none"> Hip Labor (priced per FT) 			PRP Labor	
<ul style="list-style-type: none"> <ul style="list-style-type: none"> <ul style="list-style-type: none"> Ridge Vent Labor 			PRP Labor	
<ul style="list-style-type: none"> <ul style="list-style-type: none"> <ul style="list-style-type: none"> Ice and Water Labor 			PRP Labor	
<ul style="list-style-type: none"> <ul style="list-style-type: none"> <ul style="list-style-type: none"> Additional Part 		7 Thermal and Moisture Protection	PRP Material	
<ul style="list-style-type: none"> <ul style="list-style-type: none"> Hip Metal Ridge Roll 			Hip-Valley Tool	
<ul style="list-style-type: none"> <ul style="list-style-type: none"> <ul style="list-style-type: none"> Ridge Roll 10" 	10' Lengths, 10 per Bundle	7 Thermal and Moisture Protection	PRP Material	
<ul style="list-style-type: none"> <ul style="list-style-type: none"> <ul style="list-style-type: none"> 1-1/4" Ring Shank Coil Nails 	60 Coils Per Box	7 Thermal and Moisture Protection	PRP Material	
<ul style="list-style-type: none"> <ul style="list-style-type: none"> <ul style="list-style-type: none"> Hip Labor (priced per FT) 			PRP Labor	
<ul style="list-style-type: none"> <ul style="list-style-type: none"> <ul style="list-style-type: none"> Additional Part 		7 Thermal and Moisture Protection	PRP Material	
<ul style="list-style-type: none"> <ul style="list-style-type: none"> Hip Shingles\Ice and Water 			Hip-Valley Tool	
<ul style="list-style-type: none"> <ul style="list-style-type: none"> <ul style="list-style-type: none"> 25 Yr 3 Tab Shingle 	1 Bundle Covers 33'	7 Thermal and Moisture Protection	PRP Material	
<ul style="list-style-type: none"> <ul style="list-style-type: none"> <ul style="list-style-type: none"> 1-1/4" Ring Shank Coil Nails 	60 Coils Per Box	7 Thermal and Moisture Protection	PRP Material	
<ul style="list-style-type: none"> <ul style="list-style-type: none"> <ul style="list-style-type: none"> Ice and Water Self-Adhere 1 Sqr Roll 		7 Thermal and Moisture Protection	PRP Material	
<ul style="list-style-type: none"> <ul style="list-style-type: none"> <ul style="list-style-type: none"> Hip Labor (priced per FT) 			PRP Labor	
<ul style="list-style-type: none"> <ul style="list-style-type: none"> <ul style="list-style-type: none"> Additional Part 		7 Thermal and Moisture Protection	PRP Material	
<ul style="list-style-type: none"> <ul style="list-style-type: none"> Hip Shingles\Ridge Vent 			Hip-Valley Tool	
<ul style="list-style-type: none"> <ul style="list-style-type: none"> <ul style="list-style-type: none"> 25 Yr 3 Tab Shingle 	1 Bundle Covers 33'	7 Thermal and Moisture Protection	PRP Material	
<ul style="list-style-type: none"> <ul style="list-style-type: none"> <ul style="list-style-type: none"> 1-1/4" Ring Shank Coil Nails 	60 Coils Per Box	7 Thermal and Moisture Protection	PRP Material	
<ul style="list-style-type: none"> <ul style="list-style-type: none"> <ul style="list-style-type: none"> Ridge Vent 20' Roll 	Ridge Vent Priced per FT (Manufacturer)	7 Thermal and Moisture Protection	PRP Material	
<ul style="list-style-type: none"> <ul style="list-style-type: none"> <ul style="list-style-type: none"> Hip Labor (priced per FT) 			PRP Labor	
<ul style="list-style-type: none"> <ul style="list-style-type: none"> <ul style="list-style-type: none"> Ridge Vent Labor 			PRP Labor	
<ul style="list-style-type: none"> <ul style="list-style-type: none"> <ul style="list-style-type: none"> Additional Part 		7 Thermal and Moisture Protection	PRP Material	
<ul style="list-style-type: none"> <ul style="list-style-type: none"> Valley with Metal Flashing 			Hip-Valley Tool	
<ul style="list-style-type: none"> <ul style="list-style-type: none"> <ul style="list-style-type: none"> Valley Roll Steel 18" 	50' Lengths	7 Thermal and Moisture Protection	PRP Material	
<ul style="list-style-type: none"> <ul style="list-style-type: none"> <ul style="list-style-type: none"> Valley Labor (priced per FT) 			PRP Labor	
<ul style="list-style-type: none"> <ul style="list-style-type: none"> <ul style="list-style-type: none"> Additional Part 		7 Thermal and Moisture Protection	PRP Material	
<ul style="list-style-type: none"> <ul style="list-style-type: none"> Valley with Self Adhering I/W Shield 			Hip-Valley Tool	
<ul style="list-style-type: none"> <ul style="list-style-type: none"> <ul style="list-style-type: none"> Self-Adhere 1 Square Roll 		7 Thermal and Moisture Protection	PRP Material	
<ul style="list-style-type: none"> <ul style="list-style-type: none"> <ul style="list-style-type: none"> Valley Labor (priced per FT) 			PRP Labor	
<ul style="list-style-type: none"> <ul style="list-style-type: none"> <ul style="list-style-type: none"> Additional Part 		7 Thermal and Moisture Protection	PRP Material	
<ul style="list-style-type: none"> <ul style="list-style-type: none"> Valley with Tarco ValleyFlash 			Hip-Valley Tool	
<ul style="list-style-type: none"> <ul style="list-style-type: none"> <ul style="list-style-type: none"> ValleyFlash 	Tarco Valley Shield	7 Thermal and Moisture Protection	PRP Material	
<ul style="list-style-type: none"> <ul style="list-style-type: none"> <ul style="list-style-type: none"> Valley Labor (priced per FT) 			PRP Labor	
<ul style="list-style-type: none"> <ul style="list-style-type: none"> <ul style="list-style-type: none"> Additional Part 		7 Thermal and Moisture Protection	PRP Material	

PRP Residential Assemblies—Continued

Name	Description	Division	Type	Color
Count Takeoffs			Folder	
Kick Outs			Count	
Kick Outs		7 Thermal and Moisture Protection	PRP Material	
Kick Outs Labor (priced EA)			PRP Labor	
Additional Part		7 Thermal and Moisture Protection	PRP Material	
Ridge Vents			Count	
Ridge Vent	Ridge Vent (Manufacturer)	7 Thermal and Moisture Protection	PRP Material	
Vents Labor (priced EA)			PRP Labor	
Additional Part		7 Thermal and Moisture Protection	PRP Material	
Metal Dome Vents			Count	
Metal Dome Vent	Metal Dome Vent 144 NFA	7 Thermal and Moisture Protection	PRP Material	
Metal Dome Labor (priced EA)			PRP Labor	
Additional Part		7 Thermal and Moisture Protection	PRP Material	
Low Profile SB (P)			Count	
Low Profile SB (P)	Low Profile Slant Back (Plastic) 61 NFA	7 Thermal and Moisture Protection	PRP Material	
Slant Backs Labor (priced EA)			PRP Labor	
Additional Part		7 Thermal and Moisture Protection	PRP Material	
Low Profile SB (M)			Count	
Low Profile SB (M)	Low Profile Slant Back (Metal) 61 NFA	7 Thermal and Moisture Protection	PRP Material	
Slant Backs Labor (priced EA)			PRP Labor	
Additional Part		7 Thermal and Moisture Protection	PRP Material	
Bullet Boot			Count	
Bullet Boot 2"		7 Thermal and Moisture Protection	PRP Material	
Vents Labor			PRP Labor	
Additional Part		7 Thermal and Moisture Protection	PRP Material	
To make new assemblies copy and paste existing assemblies and make necessary changes			Other	

PRP Residential Parts

Name	Description	Division	Type	Color
Area Materials			Folder	████
Underlayment (Priced per Roll)			Folder	████
15 # Felt		7 Thermal and Moisture Protection	PRP Material	
30 # Felt		7 Thermal and Moisture Protection	PRP Material	
40 # Felt		7 Thermal and Moisture Protection	PRP Material	
Synthetic Felt		7 Thermal and Moisture Protection	PRP Material	
Shingles (Priced per SQR)			Folder	████
Asphalt (Priced per SQR)			Folder	████
20 Yr. 3-Tab Shingles		7 Thermal and Moisture Protection	PRP Material	
25 Yr. 3-Tab Shingles		7 Thermal and Moisture Protection	PRP Material	
30 Yr. 3-Tab Shingles		7 Thermal and Moisture Protection	PRP Material	
40 Yr. 3-Tab Shingles		7 Thermal and Moisture Protection	PRP Material	
20 Yr. Laminated Shingles		7 Thermal and Moisture Protection	PRP Material	
25 Yr. Laminated Shingles		7 Thermal and Moisture Protection	PRP Material	
40 Yr. Laminated Shingles		7 Thermal and Moisture Protection	PRP Material	
Tile (Priced per SQR)			Folder	████
Concrete Tile		7 Thermal and Moisture Protection	PRP Material	
Clay Tile		7 Thermal and Moisture Protection	PRP Material	
Slate Tile		7 Thermal and Moisture Protection	PRP Material	
Ceramic Tile		7 Thermal and Moisture Protection	PRP Material	
Wood (Priced per SQR)			Folder	████
Cedar Shakes		7 Thermal and Moisture Protection	PRP Material	
Cedar Shingles		7 Thermal and Moisture Protection	PRP Material	
Hand-Split Shakes		7 Thermal and Moisture Protection	PRP Material	
Taper-Sawn Shakes		7 Thermal and Moisture Protection	PRP Material	
Composite (Priced per SQR)			Folder	████
Composite Shake		7 Thermal and Moisture Protection	PRP Material	
Composite Slate		7 Thermal and Moisture Protection	PRP Material	
Metal (Priced per SQR)			Folder	████
Slate Steel Shingles		7 Thermal and Moisture Protection	PRP Material	
Tile Steel Shingles		7 Thermal and Moisture Protection	PRP Material	
Wood Steel Shingles		7 Thermal and Moisture Protection	PRP Material	
Batten (Priced per BUNDLE)			Folder	████
1"x2" - 4 Batten		7 Thermal and Moisture Protection	PRP Material	
1"x2" - 8 Batten		7 Thermal and Moisture Protection	PRP Material	
1"x3" - 4 Batten		7 Thermal and Moisture Protection	PRP Material	
1"x3" - 8 Batten		7 Thermal and Moisture Protection	PRP Material	
Metal Panels (Priced per FT)			Folder	████
12" Panels			Folder	████
12" TM-RIB		7 Thermal and Moisture Protection	PRP Material	
12" CORRUGATED		7 Thermal and Moisture Protection	PRP Material	
12" TM-LOCK		7 Thermal and Moisture Protection	PRP Material	
12" PBR/R		7 Thermal and Moisture Protection	PRP Material	
12" 5V		7 Thermal and Moisture Protection	PRP Material	
16" Panels			Folder	████
16" TM-LOCK		7 Thermal and Moisture Protection	PRP Material	
16" PBR/R		7 Thermal and Moisture Protection	PRP Material	
16" TM-RIB		7 Thermal and Moisture Protection	PRP Material	
16" CORRUGATED		7 Thermal and Moisture Protection	PRP Material	
16" 5V		7 Thermal and Moisture Protection	PRP Material	
24" Panels			Folder	████
24" CORRUGATED		7 Thermal and Moisture Protection	PRP Material	
24" PBR/R		7 Thermal and Moisture Protection	PRP Material	
24" TM-LOCK		7 Thermal and Moisture Protection	PRP Material	
24" TM-RIB		7 Thermal and Moisture Protection	PRP Material	
24" 5V		7 Thermal and Moisture Protection	PRP Material	
36" Panels			Folder	████
36" CORRUGATED		7 Thermal and Moisture Protection	PRP Material	
36" PBR/R		7 Thermal and Moisture Protection	PRP Material	
36" TM-LOCK		7 Thermal and Moisture Protection	PRP Material	
36" TM-RIB		7 Thermal and Moisture Protection	PRP Material	
36" 5V		7 Thermal and Moisture Protection	PRP Material	

PRP Residential Parts—Continued

Name	Description	Division	Type	Color
Metal Panels (Priced per SQR)			Folder	
12" Panels			Folder	
12" TM-RIB		7 Thermal and Moisture Protection	PRP Material	
12" CORRUGATED		7 Thermal and Moisture Protection	PRP Material	
12" TM-LOCK		7 Thermal and Moisture Protection	PRP Material	
12" PBR/R		7 Thermal and Moisture Protection	PRP Material	
12" SV		7 Thermal and Moisture Protection	PRP Material	
16" Panels			Folder	
16" TM-LOCK		7 Thermal and Moisture Protection	PRP Material	
16" PBR/R		7 Thermal and Moisture Protection	PRP Material	
16" TM-RIB		7 Thermal and Moisture Protection	PRP Material	
16" CORRUGATED		7 Thermal and Moisture Protection	PRP Material	
16" SV		7 Thermal and Moisture Protection	PRP Material	
24" Panels			Folder	
24" CORRUGATED		7 Thermal and Moisture Protection	PRP Material	
24" PBR/R		7 Thermal and Moisture Protection	PRP Material	
24" TM-LOCK		7 Thermal and Moisture Protection	PRP Material	
24" TM-RIB		7 Thermal and Moisture Protection	PRP Material	
24" SV		7 Thermal and Moisture Protection	PRP Material	
36" Panels			Folder	
36" CORRUGATED		7 Thermal and Moisture Protection	PRP Material	
36" PBR/R		7 Thermal and Moisture Protection	PRP Material	
36" TM-LOCK		7 Thermal and Moisture Protection	PRP Material	
36" TM-RIB		7 Thermal and Moisture Protection	PRP Material	
36" SV		7 Thermal and Moisture Protection	PRP Material	
Fasteners (Priced per BOX)			Folder	
Plastic Cap Nails	Plastic Cap Nails 2000/Box	7 Thermal and Moisture Protection	PRP Material	
1-1/2" Ring Shank Hand Nail	50 Lb Box	7 Thermal and Moisture Protection	PRP Material	
2" Ring Shank Hand Nail	50 Lb Box	7 Thermal and Moisture Protection	PRP Material	
2-1/2" Ring Shank Hand Nail	50 Lb Box	7 Thermal and Moisture Protection	PRP Material	
3" Ring Shank Hand Nail	50 Lb Box	7 Thermal and Moisture Protection	PRP Material	
1-1/2" Smooth Hand Nail	50 Lb Box	7 Thermal and Moisture Protection	PRP Material	
2" Smooth Hand Nail	50 Lb Box	7 Thermal and Moisture Protection	PRP Material	
2-1/2" Smooth Hand Nail	50 Lb Box	7 Thermal and Moisture Protection	PRP Material	
1-1/4" Ring Shank Coil Nails	60 Coils Per Box	7 Thermal and Moisture Protection	PRP Material	
1-1/2" Ring Shank Coil Nails	60 Coils Per Box	7 Thermal and Moisture Protection	PRP Material	
1-3/4" Ring Shank Coil Nails	60 Coils Per Box	7 Thermal and Moisture Protection	PRP Material	
10x1-1/2" Hex Head Screws	Hex Head 250 per Bag	7 Thermal and Moisture Protection	PRP Material	
10x2" Hex Head Screws	Hex Head 250 per Bag	7 Thermal and Moisture Protection	PRP Material	
10x2-1/2" Hex Head Screws	Hex Head 250 per Bag	7 Thermal and Moisture Protection	PRP Material	
12x1-1/2" Hex Head Screws	Hex Head 250 per Bag	7 Thermal and Moisture Protection	PRP Material	
12x2" Hex Head Screws	Hex Head 250 per Bag	7 Thermal and Moisture Protection	PRP Material	
12x2-1/2" Hex Head Screws	Hex Head 250 per Bag	7 Thermal and Moisture Protection	PRP Material	
14x1-1/2" Hex Head Screws	Hex Head 250 per Bag	7 Thermal and Moisture Protection	PRP Material	
14x2" Hex Head Screws	Hex Head 250 per Bag	7 Thermal and Moisture Protection	PRP Material	
14x2-1/2" Hex Head Screws	Hex Head 250 per Bag	7 Thermal and Moisture Protection	PRP Material	

PRP Residential Parts—Continued

Name	Description	Division	Type	Color
Linear Materials			Folder	█
Priced EACH			Folder	█
Fasteners			Folder	█
Plastic Cap Nails	Plastic Cap Nails 2000/Box	7 Thermal and Moisture Protection	PRP Material	
1-1/2" Ring Shank Hand Nail	50 Lb Box	7 Thermal and Moisture Protection	PRP Material	
2" Ring Shank Hand Nail	50 Lb Box	7 Thermal and Moisture Protection	PRP Material	
2-1/2" Ring Shank Hand Nail	50 Lb Box	7 Thermal and Moisture Protection	PRP Material	
3" Ring Shank Hand Nail	50 Lb Box	7 Thermal and Moisture Protection	PRP Material	
1-1/2" Smooth Hand Nail	50 Lb Box	7 Thermal and Moisture Protection	PRP Material	
2" Smooth Hand Nail	50 Lb Box	7 Thermal and Moisture Protection	PRP Material	
2-1/2" Smooth Hand Nail	50 Lb Box	7 Thermal and Moisture Protection	PRP Material	
1-1/4" Ring Shank Coil Nails	60 Coils Per Box	7 Thermal and Moisture Protection	PRP Material	
1-1/2" Ring Shank Coil Nails	60 Coils Per Box	7 Thermal and Moisture Protection	PRP Material	
1-3/4" Ring Shank Coil Nails	60 Coils Per Box	7 Thermal and Moisture Protection	PRP Material	
10x1-1/2" Hex Head Screws	Hex Head 250 per Bag	7 Thermal and Moisture Protection	PRP Material	
10x2" Hex Head Screws	Hex Head 250 per Bag	7 Thermal and Moisture Protection	PRP Material	
10x2-1/2" Hex Head Screws	Hex Head 250 per Bag	7 Thermal and Moisture Protection	PRP Material	
12x1-1/2" Hex Head Screws	Hex Head 250 per Bag	7 Thermal and Moisture Protection	PRP Material	
12x2" Hex Head Screws	Hex Head 250 per Bag	7 Thermal and Moisture Protection	PRP Material	
12x2-1/2" Hex Head Screws	Hex Head 250 per Bag	7 Thermal and Moisture Protection	PRP Material	
14x1-1/2" Hex Head Screws	Hex Head 250 per Bag	7 Thermal and Moisture Protection	PRP Material	
14x2" Hex Head Screws	Hex Head 250 per Bag	7 Thermal and Moisture Protection	PRP Material	
14x2-1/2" Hex Head Screws	Hex Head 250 per Bag	7 Thermal and Moisture Protection	PRP Material	
Perimeter Material			Folder	█
Starter Strips Shingles	Starter Shingle (Manufacturer)	7 Thermal and Moisture Protection	PRP Material	
Quick Roll Starter Shingles	7"x33.4" Roll	7 Thermal and Moisture Protection	PRP Material	
Head Wall Flashing	Head Wall Flashing 4"x5"x10' 120 deg	7 Thermal and Moisture Protection	PRP Material	
Counter Flashing	10' Pieces	7 Thermal and Moisture Protection	PRP Material	
Apron Flashing	10' Pieces	7 Thermal and Moisture Protection	PRP Material	
End Wall Flashing	10' Pieces	7 Thermal and Moisture Protection	PRP Material	
Z Bar Flashing	10' Pieces	7 Thermal and Moisture Protection	PRP Material	
Caulk	Coverage 30' per tube	7 Thermal and Moisture Protection	PRP Material	
J Metal	J Metal Flashing 4"x5"	7 Thermal and Moisture Protection	PRP Material	
Step Flash Gal Mil 100 Pack	8x8 Step Tins Gal Mil 100 Pc per pack	7 Thermal and Moisture Protection	PRP Material	
1-1/2"x1-1/2" Steel Drip Edge	1.5 x1.5 Drip Edge Gal Mil	7 Thermal and Moisture Protection	PRP Material	
2"x2" Steel Drip Edge	2x2 Drip Edge Gal Mil	7 Thermal and Moisture Protection	PRP Material	
1-1/2"x1-1/2" Alum. Drip Edge	1.5 x1.5 Drip Edge Gal Mil	7 Thermal and Moisture Protection	PRP Material	
2"x2" Alum. Drip Edge	2x2 Drip Edge Gal Mil	7 Thermal and Moisture Protection	PRP Material	
Metal Roof Edge 3"x1-1/2"	3"x1-1/2"	7 Thermal and Moisture Protection	PRP Material	
Metal Roof Edge 4"x2"	4"x2"	7 Thermal and Moisture Protection	PRP Material	
Metal Roof Edge 4-1/2"x2-1/2"	4-1/2"x2-1/2"	7 Thermal and Moisture Protection	PRP Material	
Metal Roof Edge 5"x2"	5"x2"	7 Thermal and Moisture Protection	PRP Material	
Metal Roof Edge 6"x2"	6"x2"	7 Thermal and Moisture Protection	PRP Material	
Metal Roof Edge 6"x3"	6"x3"	7 Thermal and Moisture Protection	PRP Material	
Metal Roof Edge 8"x4"	8"x4"	7 Thermal and Moisture Protection	PRP Material	
Hip and Ridge Material			Folder	█
20 Yr 3 Tab Shingle	1 Bundle Covers 33'	7 Thermal and Moisture Protection	PRP Material	
25 Yr 3 Tab Shingle	1 Bundle Covers 33'	7 Thermal and Moisture Protection	PRP Material	
Ridglass Ridge Cap	1 Box Covers 31'	7 Thermal and Moisture Protection	PRP Material	
Timbertex Ridge Cap	1 Bundle Covers 20'	7 Thermal and Moisture Protection	PRP Material	
Seal-a-ridge Ridge Cap 6-2/3" Exp	1 Bundle Covers 25'	7 Thermal and Moisture Protection	PRP Material	
Seal-a-ridge Ridge Cap 5" Exp	1 Bundle Covers 25'	7 Thermal and Moisture Protection	PRP Material	
Ridge Vent 4' Sections	Ridge Vent Priced per FT (Manufacturer)	7 Thermal and Moisture Protection	PRP Material	
Ridge Vent 50' Roll	Ridge Vent Priced per FT (Manufacturer)	7 Thermal and Moisture Protection	PRP Material	
Ridge Vent 20' Roll	Ridge Vent Priced per FT (Manufacturer)	7 Thermal and Moisture Protection	PRP Material	
Ridge Roll 10"	10' Lengths, 10 per Bundle	7 Thermal and Moisture Protection	PRP Material	
Ridge Roll 12"	10' Lengths, 10 per Bundle	7 Thermal and Moisture Protection	PRP Material	
Ridge Roll 14"	10' Lengths, 10 per Bundle	7 Thermal and Moisture Protection	PRP Material	
Ridge Roll 18"	10' Lengths, 10 per Bundle	7 Thermal and Moisture Protection	PRP Material	

PRP Residential Parts—Continued

Name	Description	Division	Type	Color
Valleys and Ice and Water Shield			Folder	█
Valley Roll Alum. 6"	10' Lengths, 5 per Bundle	7 Thermal and Moisture Protection	PRP Material	
ValleyFlash	Tarco Valley Shield	7 Thermal and Moisture Protection	PRP Material	
Ice and Water Self-Adhere 1 Sqr Roll		7 Thermal and Moisture Protection	PRP Material	
Ice and Water Self-Adhere 2 Sqr Roll		7 Thermal and Moisture Protection	PRP Material	
Ice and Water Mech. Attached 1 Sqr Roll		7 Thermal and Moisture Protection	PRP Material	
Ice and Water Mech. Attached 2 Sqr Roll		7 Thermal and Moisture Protection	PRP Material	
Torch-Applied 1 Square Roll		7 Thermal and Moisture Protection	PRP Material	
Hot Mopped 1 Square Roll		7 Thermal and Moisture Protection	PRP Material	
Formed Valley 24"x10' 26Ga	10' Lengths, 5 per Bundle	7 Thermal and Moisture Protection	PRP Material	
Formed Valley 18"x10' 26Ga	10' Lengths, 5 per Bundle	7 Thermal and Moisture Protection	PRP Material	
Valley Roll Steel 18"	50' Lengths	7 Thermal and Moisture Protection	PRP Material	
Valley Roll Steel 24"	50' Lengths	7 Thermal and Moisture Protection	PRP Material	
Valley Roll Alum. 18"	50' Lengths	7 Thermal and Moisture Protection	PRP Material	
Valley Roll Alum. 24"	50' Lengths	7 Thermal and Moisture Protection	PRP Material	
Priced per FT			Folder	█
Perimeter Material			Folder	█
Starter Strips Shingles	Starter Shingle (Manufacturer)	7 Thermal and Moisture Protection	PRP Material	
Quick Roll Starter Shingles	7"x33.4" Roll	7 Thermal and Moisture Protection	PRP Material	
Head Wall Flashing	Head Wall Flashing 4"x5" 120 deg	7 Thermal and Moisture Protection	PRP Material	
CounterFlashing		7 Thermal and Moisture Protection	PRP Material	
Apron Flashing		7 Thermal and Moisture Protection	PRP Material	
End Wall Flashing		7 Thermal and Moisture Protection	PRP Material	
Caulking		7 Thermal and Moisture Protection	PRP Material	
J Metal	J Metal Flashing 4"x5"	7 Thermal and Moisture Protection	PRP Material	
Z Bar Flashing		7 Thermal and Moisture Protection	PRP Material	
Step Flash 8"x8"	8x8 Step Tins Gal Mil 100 Pc per pack	7 Thermal and Moisture Protection	PRP Material	
Stucco Flash 5"	5" 26 ga 25 per carton coverage 32'	7 Thermal and Moisture Protection	PRP Material	
1-1/2"x1-1/2" Steel Drip Edge	1.5 x1.5 Drip Edge Gal Mil	7 Thermal and Moisture Protection	PRP Material	
2"x2" Steel Drip Edge	2x2 Drip Edge Gal Mil	7 Thermal and Moisture Protection	PRP Material	
1-1/2"x1-1/2" Alum. Drip Edge	1.5 x1.5 Drip Edge Gal Mil	7 Thermal and Moisture Protection	PRP Material	
2"x2" Alum. Drip Edge	2x2 Drip Edge Gal Mil	7 Thermal and Moisture Protection	PRP Material	
Hip, Valley and Ridge Material			Folder	█
20 Yr 3 Tab Shingle		7 Thermal and Moisture Protection	PRP Material	
25 Yr 3 Tab Shingle		7 Thermal and Moisture Protection	PRP Material	
Ridge Cap Shingles		7 Thermal and Moisture Protection	PRP Material	
Ridge Vent 20' Roll		7 Thermal and Moisture Protection	PRP Material	
Metal Ridge Cap		7 Thermal and Moisture Protection	PRP Material	
Ridge Vent 50' Roll		7 Thermal and Moisture Protection	PRP Material	
Ridge Roll 10"		7 Thermal and Moisture Protection	PRP Material	
Ridge Roll 12"		7 Thermal and Moisture Protection	PRP Material	
Ridge Roll 14"		7 Thermal and Moisture Protection	PRP Material	
Ridge Roll 18"		7 Thermal and Moisture Protection	PRP Material	
Valleys and Ice and Water Shield			Folder	█
ValleyFlash		7 Thermal and Moisture Protection	PRP Material	
Self-Adhere 1 Square Roll		7 Thermal and Moisture Protection	PRP Material	
Self-Adhere 2 Square Roll		7 Thermal and Moisture Protection	PRP Material	
Mech. Attached 1 Square Roll		7 Thermal and Moisture Protection	PRP Material	
Mech. Attached 2 Square Roll		7 Thermal and Moisture Protection	PRP Material	
Torch-Applied 1 Square Roll		7 Thermal and Moisture Protection	PRP Material	
Hot Mopped 1 Square Roll		7 Thermal and Moisture Protection	PRP Material	
Formed Valley 24"x10' 26Ga	10' Lengths, 5 per Bundle	7 Thermal and Moisture Protection	PRP Material	
Formed Valley 18"x10' 26Ga	10' Lengths, 5 per Bundle	7 Thermal and Moisture Protection	PRP Material	
Valley Roll Steel 18"	50' Lengths	7 Thermal and Moisture Protection	PRP Material	
Valley Roll Steel 24"	50' Lengths	7 Thermal and Moisture Protection	PRP Material	
Valley Roll Alum. 6"	10' Lengths, 5 per Bundle	7 Thermal and Moisture Protection	PRP Material	
Valley Roll Alum. 18"	50' Lengths	7 Thermal and Moisture Protection	PRP Material	
Valley Roll Alum. 24"	50' Lengths	7 Thermal and Moisture Protection	PRP Material	

PRP Residential Parts—Continued

Name	Description	Division	Type	Color
Valley Roll Alum. 24"	50' Lengths	7 Thermal and Moisture Protection	PRP Material	
Count Materials			Folder	
Kick Outs			Material	
Gooseneck Vent			Material	
Bullet Boot 1-1/2"			Material	
12" Turbine			Material	
Bullet Boot 2"			Material	
Bullet Boot 3"			Material	
Ridge Vent			Material	
Pipe Flashing			Material	
Metal Dome Vent			Material	
Low Profile SB (P)			Material	
Low Profile SB (M)			Material	
Caulk			Material	
Labor			Folder	
Area Labor			Folder	
Priced per SQR			Folder	
Shingle Labor		7 Thermal and Moisture Protection	PRP Labor	
Tile Labor			PRP Labor	
Metal Panels Labor			PRP Labor	
Priced per SQ FT			Folder	
Shingle Labor		7 Thermal and Moisture Protection	PRP Labor	
Tile Labor		7 Thermal and Moisture Protection	PRP Labor	
Metal Panels Labor		7 Thermal and Moisture Protection	PRP Labor	
Priced per HR			Folder	
Shingle Labor		7 Thermal and Moisture Protection	PRP Labor	
Tile Labor		7 Thermal and Moisture Protection	PRP Labor	
Metal Panels Labor		7 Thermal and Moisture Protection	PRP Labor	
Linear Labor			Folder	
Priced per FT			Folder	
Drip Edge Labor		7 Thermal and Moisture Protection	PRP Labor	
Ice and Water Labor		7 Thermal and Moisture Protection	PRP Labor	
Hip Labor		7 Thermal and Moisture Protection	PRP Labor	
Valley Labor		7 Thermal and Moisture Protection	PRP Labor	
Ridge Labor		7 Thermal and Moisture Protection	PRP Labor	
Starter Shingle Labor		7 Thermal and Moisture Protection	PRP Labor	
Ridge Vent Labor		7 Thermal and Moisture Protection	PRP Labor	
J Metal Labor		7 Thermal and Moisture Protection	PRP Labor	
Head Wall Flashing Labor		7 Thermal and Moisture Protection	PRP Labor	
Step Flashing Labor		7 Thermal and Moisture Protection	PRP Labor	
CounterFlashing Labor		7 Thermal and Moisture Protection	PRP Labor	
Priced per HR			Folder	
Drip Edge Labor		7 Thermal and Moisture Protection	PRP Labor	
Hip Labor		7 Thermal and Moisture Protection	PRP Labor	
Valley Labor		7 Thermal and Moisture Protection	PRP Labor	
Ridge Labor		7 Thermal and Moisture Protection	PRP Labor	
Starter Shingle Labor		7 Thermal and Moisture Protection	PRP Labor	
Ridge Vent Labor		7 Thermal and Moisture Protection	PRP Labor	
J Metal Labor		7 Thermal and Moisture Protection	PRP Labor	
Head Wall Flashing Labor		7 Thermal and Moisture Protection	PRP Labor	
Step Flashing Labor		7 Thermal and Moisture Protection	PRP Labor	
CounterFlashing Labor		7 Thermal and Moisture Protection	PRP Labor	
Count Labor			Folder	
Priced EA			Folder	
Vents Labor		7 Thermal and Moisture Protection	PRP Labor	
Kick Outs Labor		7 Thermal and Moisture Protection	PRP Labor	
Slant Back Labor		7 Thermal and Moisture Protection	PRP Labor	
Metal Dome Labor		7 Thermal and Moisture Protection	PRP Labor	
Caulk Labor		7 Thermal and Moisture Protection	PRP Labor	
Priced per HR			Folder	
Caulk Labor		7 Thermal and Moisture Protection	PRP Labor	
Metal Dome Labor		7 Thermal and Moisture Protection	PRP Labor	
Slant Back Labor		7 Thermal and Moisture Protection	PRP Labor	
Kick Outs Labor		7 Thermal and Moisture Protection	PRP Labor	
Vents Labor		7 Thermal and Moisture Protection	PRP Labor	
When adding parts just copy and paste existing parts and make the needed changes			Other	
Also do not change folder names or add new folders			Other	