

Concrete Starter Pack

User Guide

UPDATED ON 1/24/2019

PlanSwift

Authored by: Dave Hansen



Table of Contents

Overview	3
Purchasing and Installation	4
Purchasing Plugins.....	4
Installation and Uninstallation	4
Features.....	4
How To	5
How to: Copy and Paste an Assembly.....	5
How to: Copy and Paste Parts.....	10
How to: Drag and Drop Parts	15
FAQ.....	17
Compendium.....	18
Concrete Assemblies.....	18
Concrete Parts.....	23

Overview

This guide will teach you how to properly use the tools and features found within the Concrete starter pack. It is designed for use with PlanSwift® Takeoff and Estimating Software. This guide is not meant to be a step-by-step “walk through” document, although it can be used as a reference for getting the work done. If you encounter technical difficulty, consult this guide (including the [FAQ](#) section of this user manual) or contact the technical support department at:

PlanSwift® Technical Support
support@PlanSwift.com
1-888-752-6794 Ext. 2

PlanSwift also offers additional training. For training options, contact the training department at:

PlanSwift® Training Department
training@PlanSwift.com
1-888-752-6794 Ext. 4

Purchasing and Installation

Purchasing Plugins

If you need to purchase PlanSwift or a plugin product, contact the Sales Department at:

PlanSwift® Sales
sales@PlanSwift.com
1-888-752-6794 Ext. 1

Installation and Uninstallation

Installing and uninstalling starter packs is simple. For installing them, click on the Import Plugin Package icon (arrow 1 in Figure 1) from the PlanSwift Main Ribbon-bar **Plugin** tab (arrow 3 of Figure 1) and follow the prompts from there. For uninstalling, click on the Uninstall Plugin (arrow 2 in Figure 1) and follow those prompts.

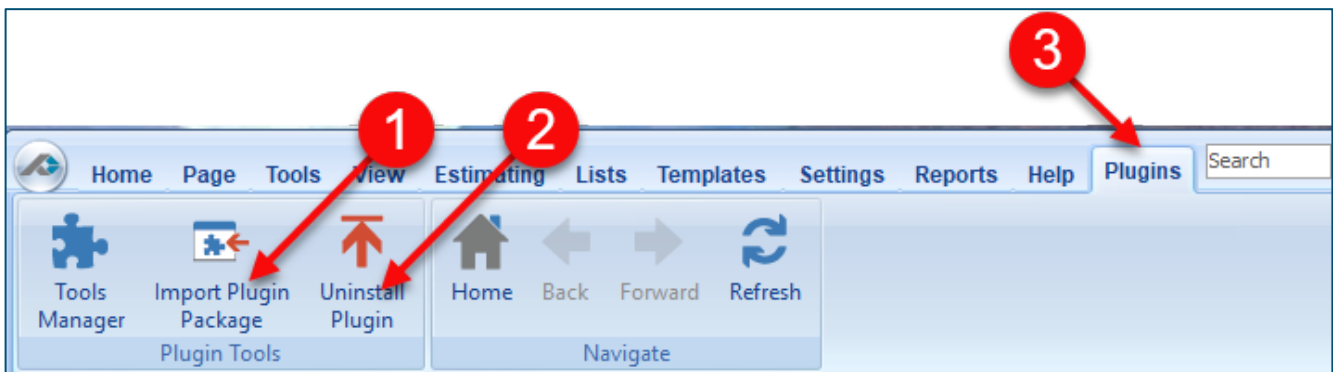


Figure 1

Features

The Concrete Starter Pack includes parts and assemblies found in the Templates tab of PlanSwift. These are listed in the [Compendium](#) at the end of this guide. With these Concrete assemblies and parts, PlanSwift users can easily customize assemblies and parts for later use. Starter Packs contain a large library of prebuilt templates, parts and assemblies. Modifying the library of parts and assemblies for any Starter Pack allows users the ability to customize their Templates to their specific needs. Users will save

countless hours of setup by utilizing a Starter Pack as their starting point for building custom parts and assemblies. The instructions below will guide new users through the basics of modifying parts and assemblies. We highly recommend purchasing a training package for accelerated learning and faster customization.

How To

How to: Copy and Paste an Assembly

The purpose of copying and pasting an assembly is to allow the user to copy and then modify the assembly for later use. As an example, you may want two different assemblies: one might include a part, and another might have an alternative part or not include that part at all. By copying one assembly and then modifying and renaming the copy (for easy identification), you can have two different assemblies available, allowing for easier and faster takeoffs. Figure 2 shows the **Templates Tab** (arrow 1) and the **Area Takeoff Item Example 1** assembly (arrow 2). If you want to add another assembly but with no **Material 3**, then you would click on the assembly you want to copy (arrow 2), click on **Copy** (arrow 3), and then click on **Paste** (arrow 4).

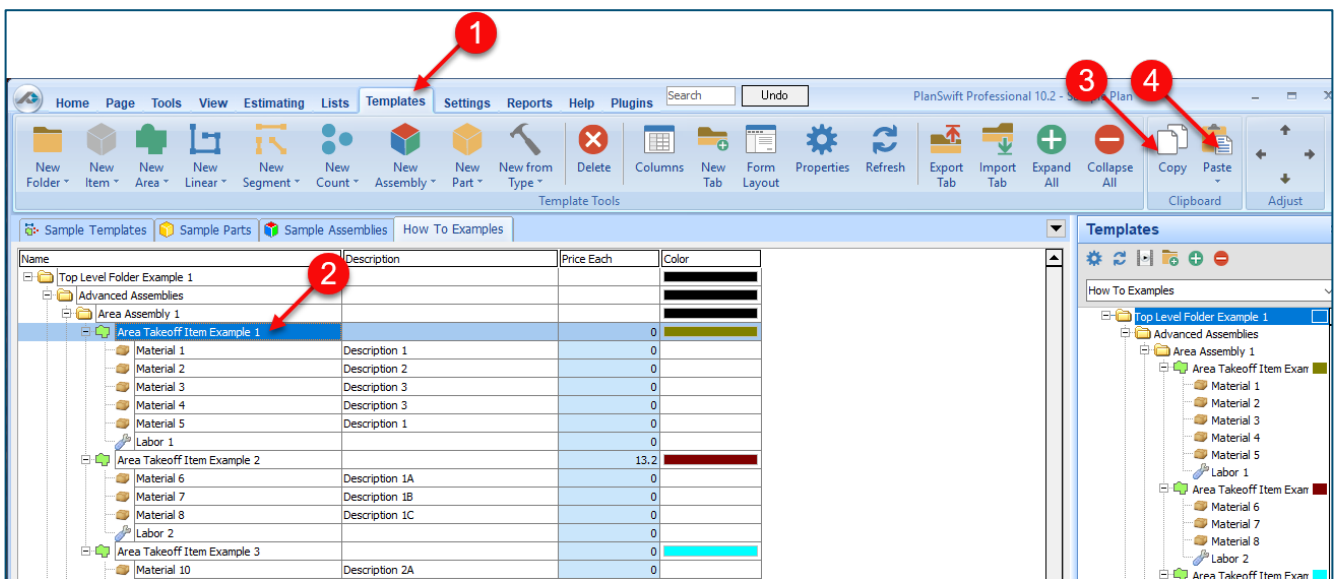


Figure 2

Figure 3 shows the original (arrows 1) and new **Area Takeoff Item Example 1** assembly (arrow 2). To delete the **Material 3** (arrow 3) from the newly created **Area Takeoff Item Example 1** assembly (arrow 2), click on **Material 3** (arrow 3), click on **Delete** (arrow 4), and click on **OK** in the popup window to confirm the deletion.

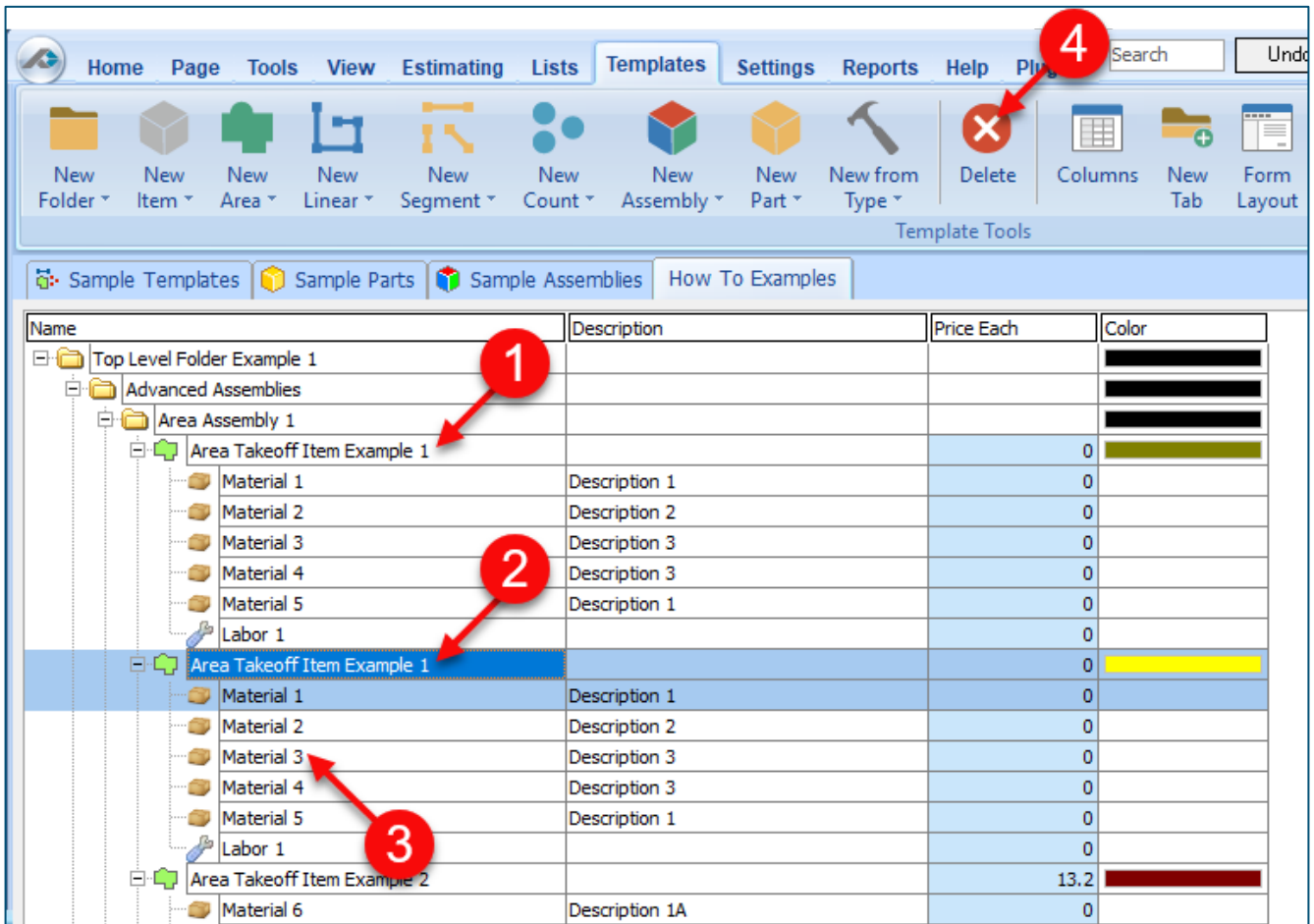


Figure 3

Figure 4 now shows the two assemblies, one with (arrow 1) and one without (arrow 2) the **Material 3** item. You can now change the description of the duplicated **Area Takeoff Item Example 1** (arrow 3) without the **Material 3** item by double-clicking the duplicate **Area Takeoff Item Example 1** (arrow 3).

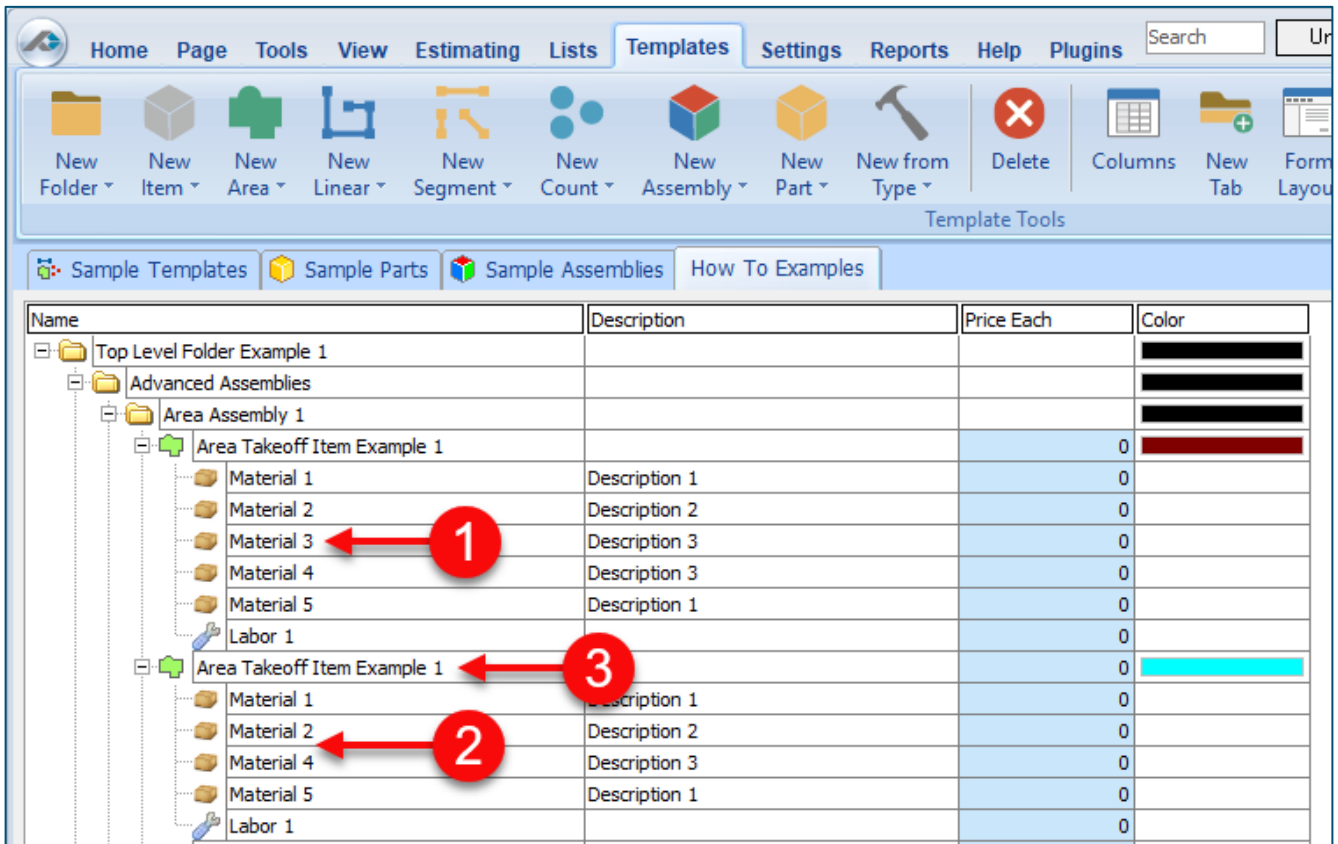


Figure 4

This opens the **Properties – [Area Takeoff Item Example 1]** window (Figure 5) where you can change the assembly’s name to something like **Area Takeoff Item Example 1—No Material 3** to make it easier to identify.

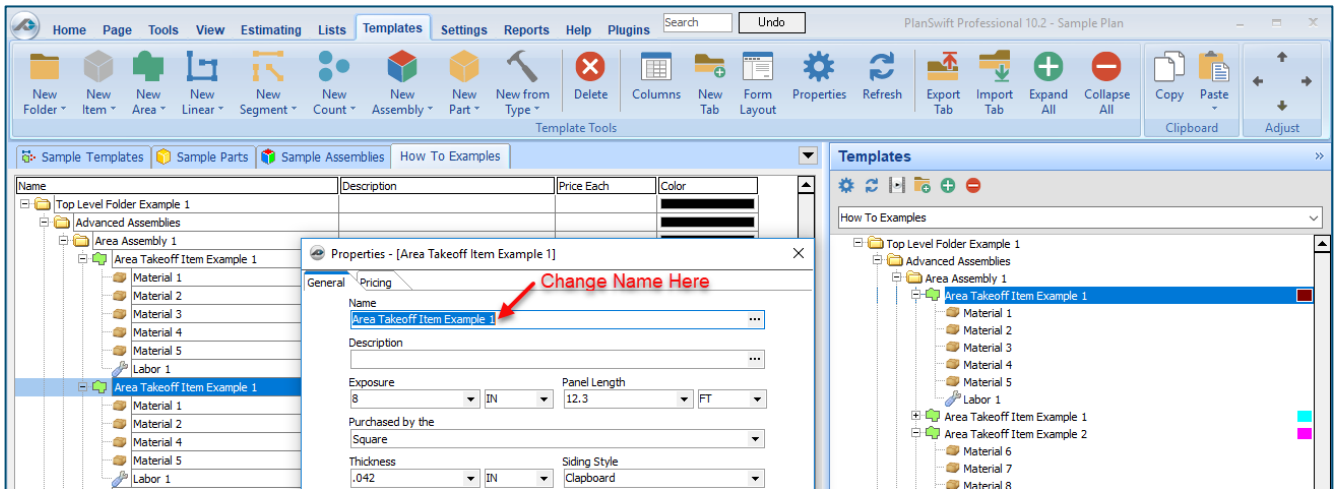


Figure 5

Click on **Ok** in the **Properties** window after you have entered the name. Figure 6 shows the new name.

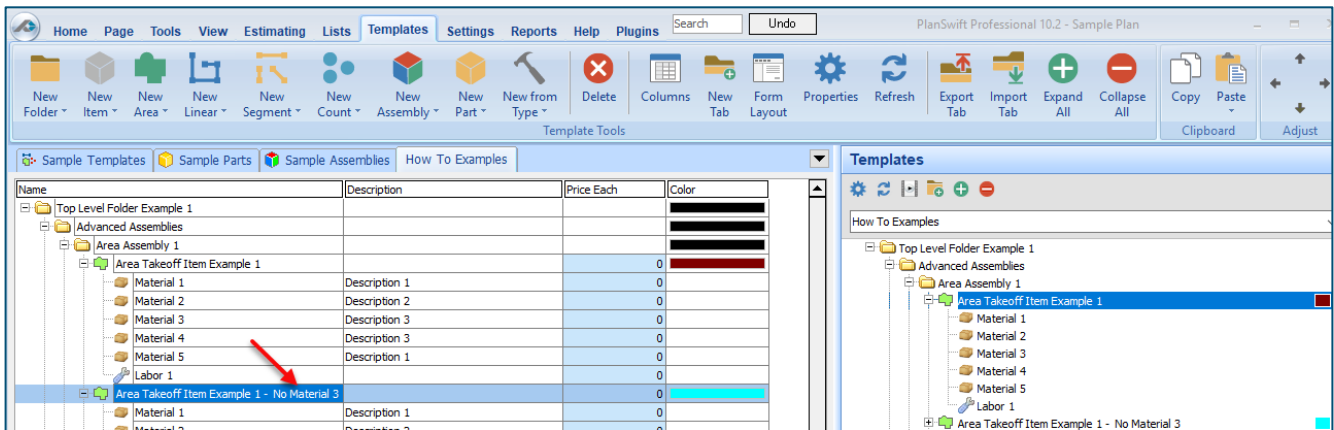


Figure 6

To perform a takeoff with the **Area Takeoff Item Example 1—No Material 3** assembly, go to the takeoff page, click on the green **Record Button** (see the arrow in Figure 7) in the **Templates** sidebar window, and then proceed to do your takeoff.

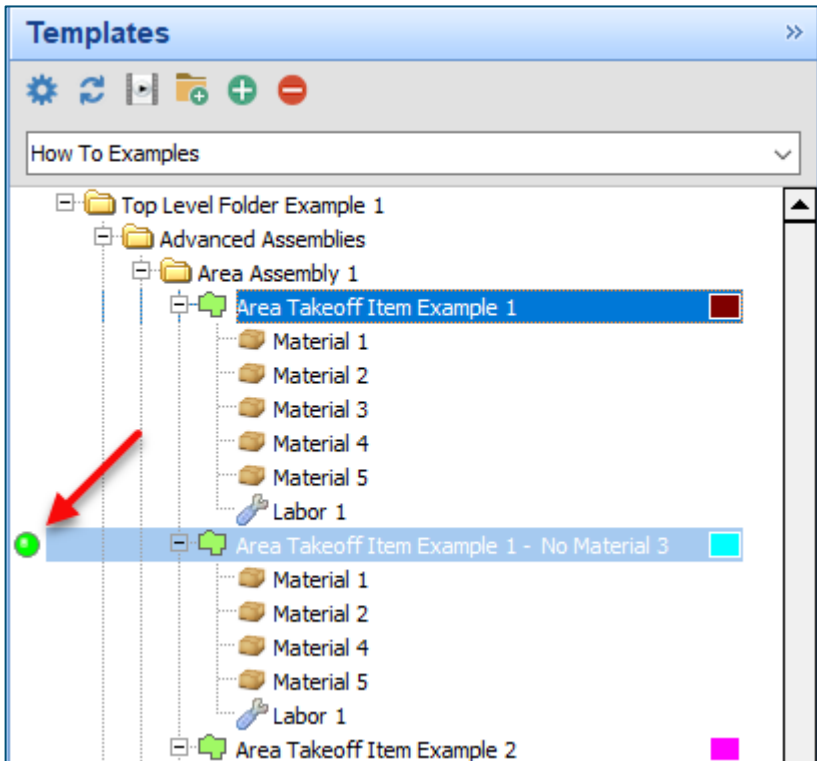


Figure 7

Disclaimer

Any modifications that a user makes to a Starter Pack should always be tested and verified by that user to ensure quantities and calculations are accurate. PlanSwift cannot verify the accuracy of modifications made to templates, parts and assemblies by the user.

How to: Copy and Paste Parts

Copying and pasting parts is handled similarly to copying and pasting an assembly. If, for instance, you want to move **Material 6** in **Area Takeoff Item Example 2** to **Area Takeoff Item Example 1**, click on **Material 6** (arrow 1), then click on copy (arrow 2) as shown in Figure 8.

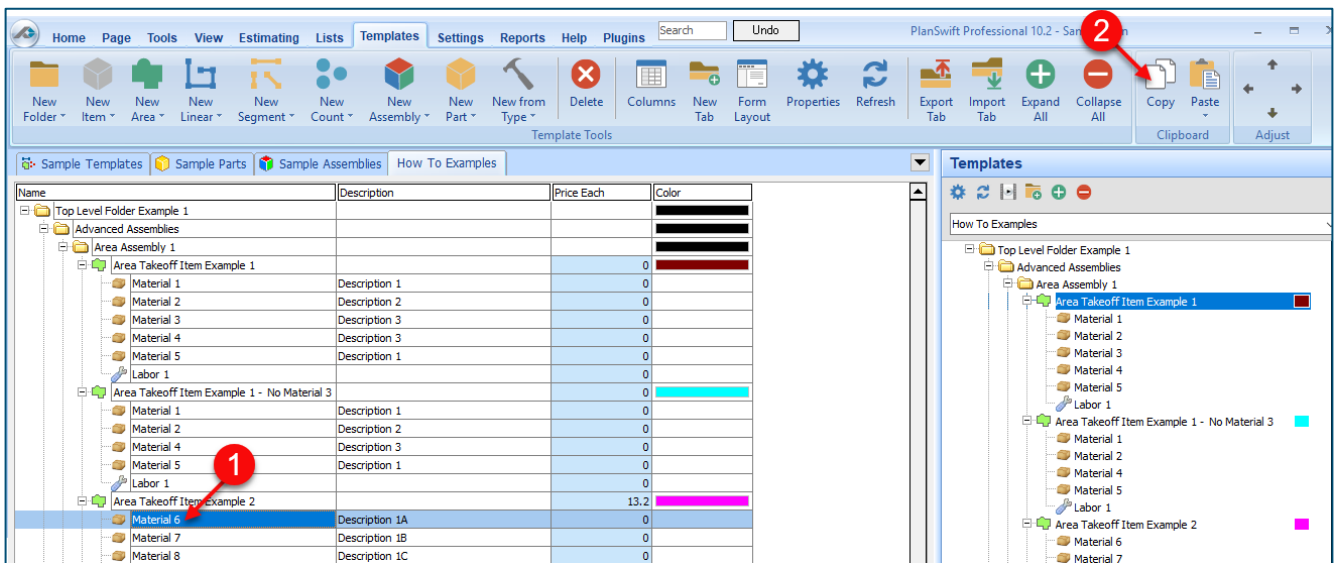


Figure 8

There are now two ways to paste the part. The first is to paste it at the same hierarchical level of a selected item, and the second is to paste it as a sub-item of a selected item. Figure 9 shows the **Paste** button. Clicking on the top half of the button pastes the part at the same hierarchical level of a selected item. Clicking on the drop-down half of the button, then selecting **As Sub-Item** pastes the part as a sub-item of the selected item.

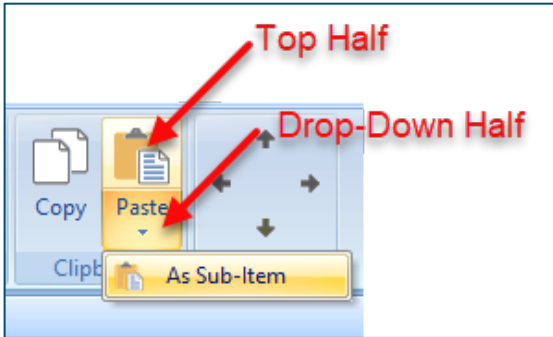


Figure 9

Click on **Area Takeoff Item Example 1**, then click on the top half of **Paste**. As shown in Figure 10, **Material 6** gets pasted at the same hierarchical level as **Area Takeoff Item Example 1**.

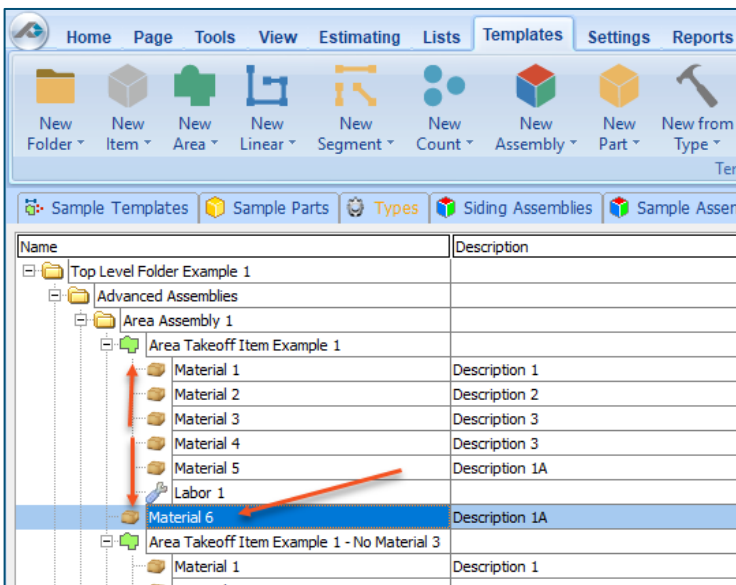


Figure 10

If you had selected the drop-down half of the **Paste** button, then **Material 6** would be a sub-item of **Area Takeoff Item Example 1**. Figure 11 shows **Material 6** as a sub-item.

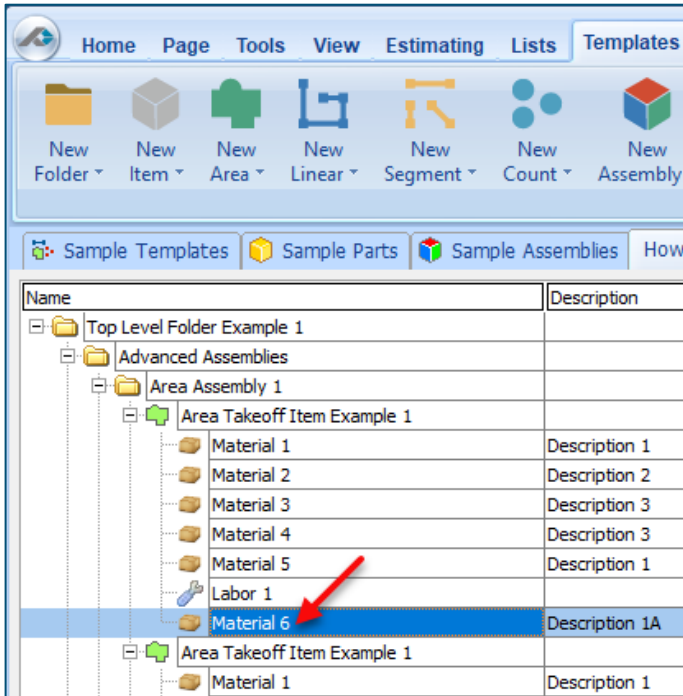


Figure 11

Another way to adjust the hierarchy of an item, such as **Material 6**, is to use the Main Ribbon bar arrow **Adjust** keys (Figure 12).

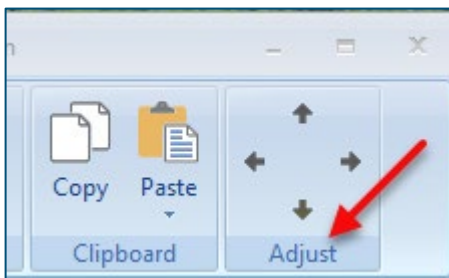


Figure 12

The left and right **Adjust** arrows move the item left and right (up or down) in the hierarchy, and the up and down **Adjust** arrows keys moves the item higher and lower in the list of items.

A shortcut to the **Copy** and **Paste** and **Paste as Sub-Item** selections is available with a right-click menu. Figure 13 shows the **Copy**, **Paste**, and **Paste As Sub-Item** options on the right-click menu when **Material 6** is right-clicked on.

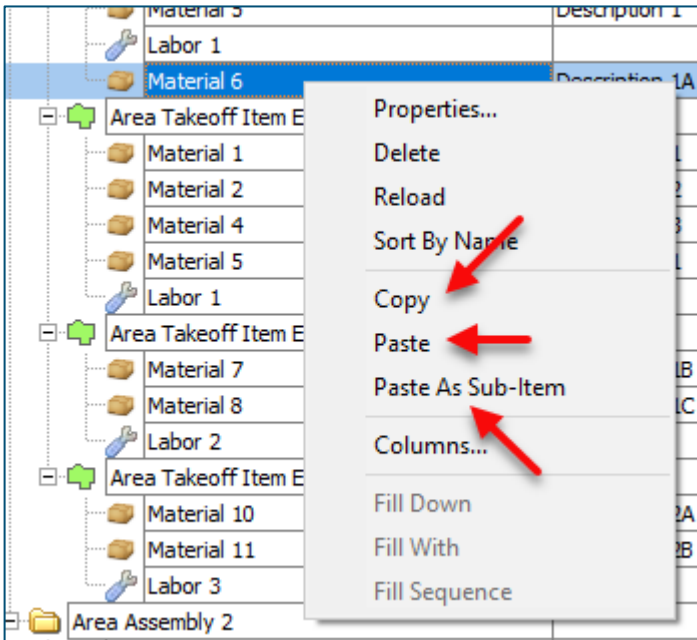


Figure 13

Double-clicking on **Material 6** allows you to change the name of the item and alter other properties of the item (Figure 14). To change the name of **Material 6**, double-click on the **Material 6** name, type the new name, and click on **Ok**.

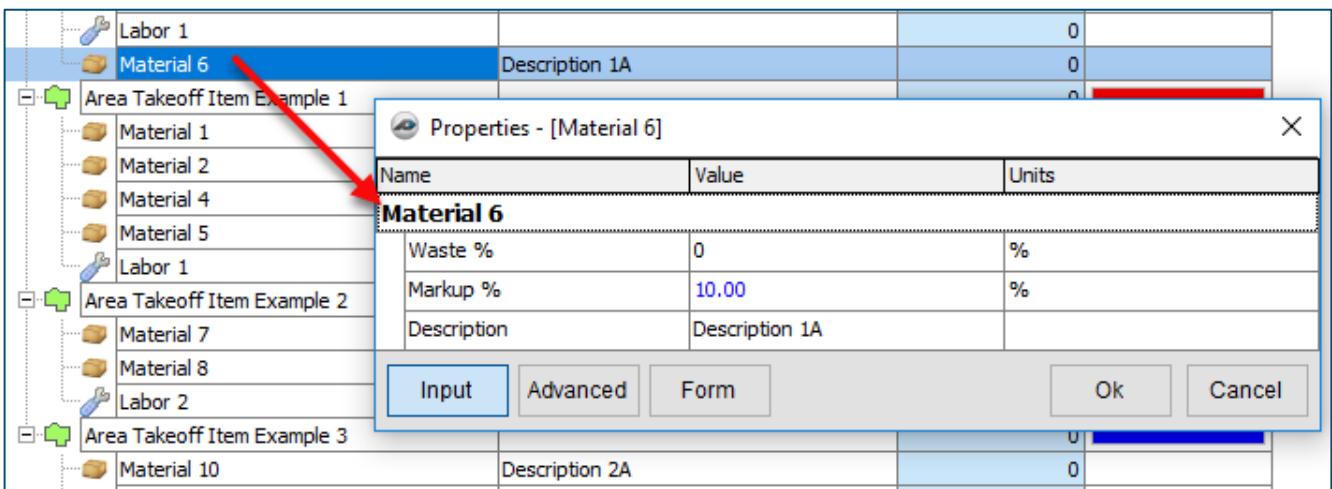
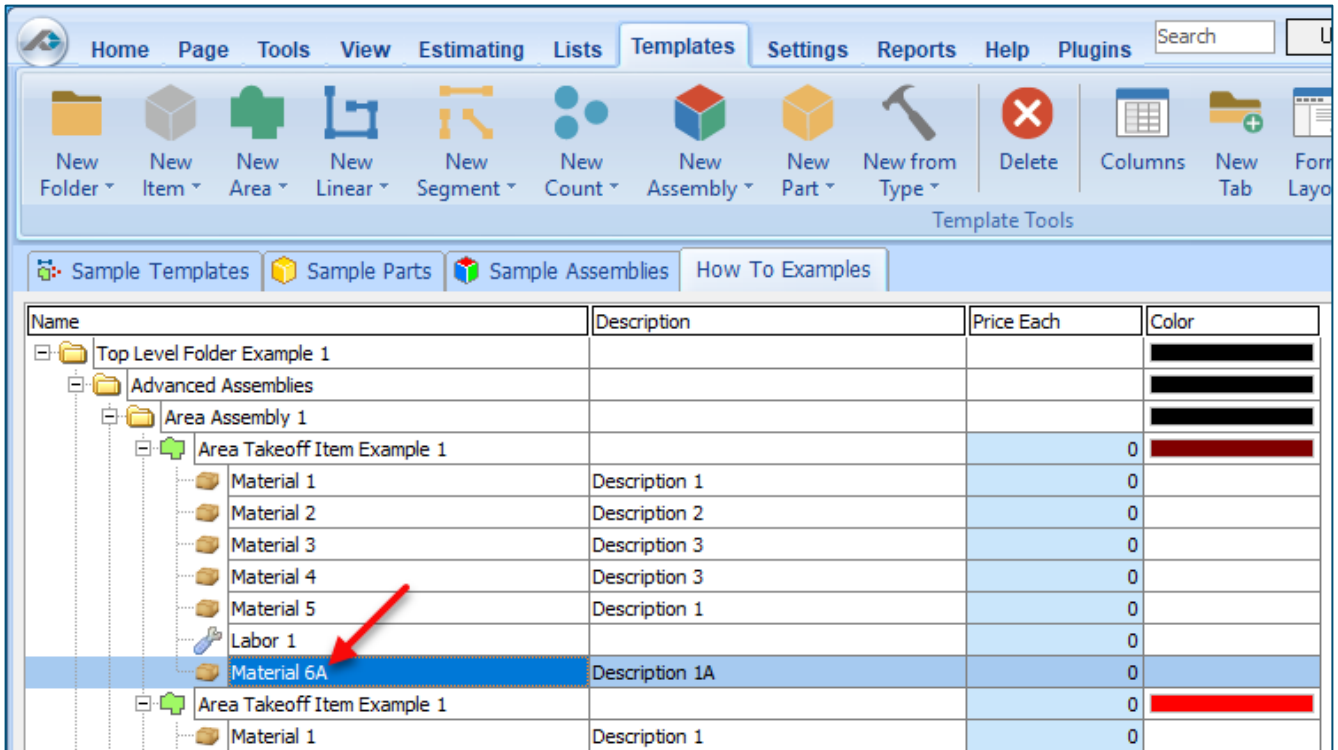


Figure 14

Figure 15 shows **Material 6** renamed to **Material 6A**.



The screenshot shows a software interface with a menu bar (Home, Page, Tools, View, Estimating, Lists, Templates, Settings, Reports, Help, Plugins) and a toolbar with various icons for creating and editing items. Below the toolbar is a navigation pane with tabs for Sample Templates, Sample Parts, Sample Assemblies, and How To Examples. The main area displays a table with columns for Name, Description, Price Each, and Color. The table contains a hierarchical list of items, including folders like 'Top Level Folder Example 1' and 'Advanced Assemblies', and individual items like 'Material 1' through 'Material 5', 'Labor 1', and 'Material 6A'. A red arrow points to the 'Material 6A' row, which is highlighted in blue. The 'Price Each' column for all items is set to 0, and the 'Color' column shows various color swatches.

Name	Description	Price Each	Color
Top Level Folder Example 1			
Advanced Assemblies			
Area Assembly 1			
Area Takeoff Item Example 1		0	
Material 1	Description 1	0	
Material 2	Description 2	0	
Material 3	Description 3	0	
Material 4	Description 3	0	
Material 5	Description 1	0	
Labor 1		0	
Material 6A	Description 1A	0	
Area Takeoff Item Example 1		0	
Material 1	Description 1	0	

Figure 15

Disclaimer

Any modifications that a user makes to a Starter Pack should always be tested and verified by that user to ensure quantities and calculations are accurate. PlanSwift cannot verify the accuracy of modifications made to templates, parts and assemblies by the user.

How to: Drag and Drop Parts

Parts may be dragged and dropped from one assembly to another assembly. If, for instance, you want to drag the **Material 8** item from **Area Takeoff Item Example 2** up to **Area Takeoff Item Example 1**, click on **Material 8** and drag it up to just below **Material 6A** (see Figure 16) and release the mouse button.

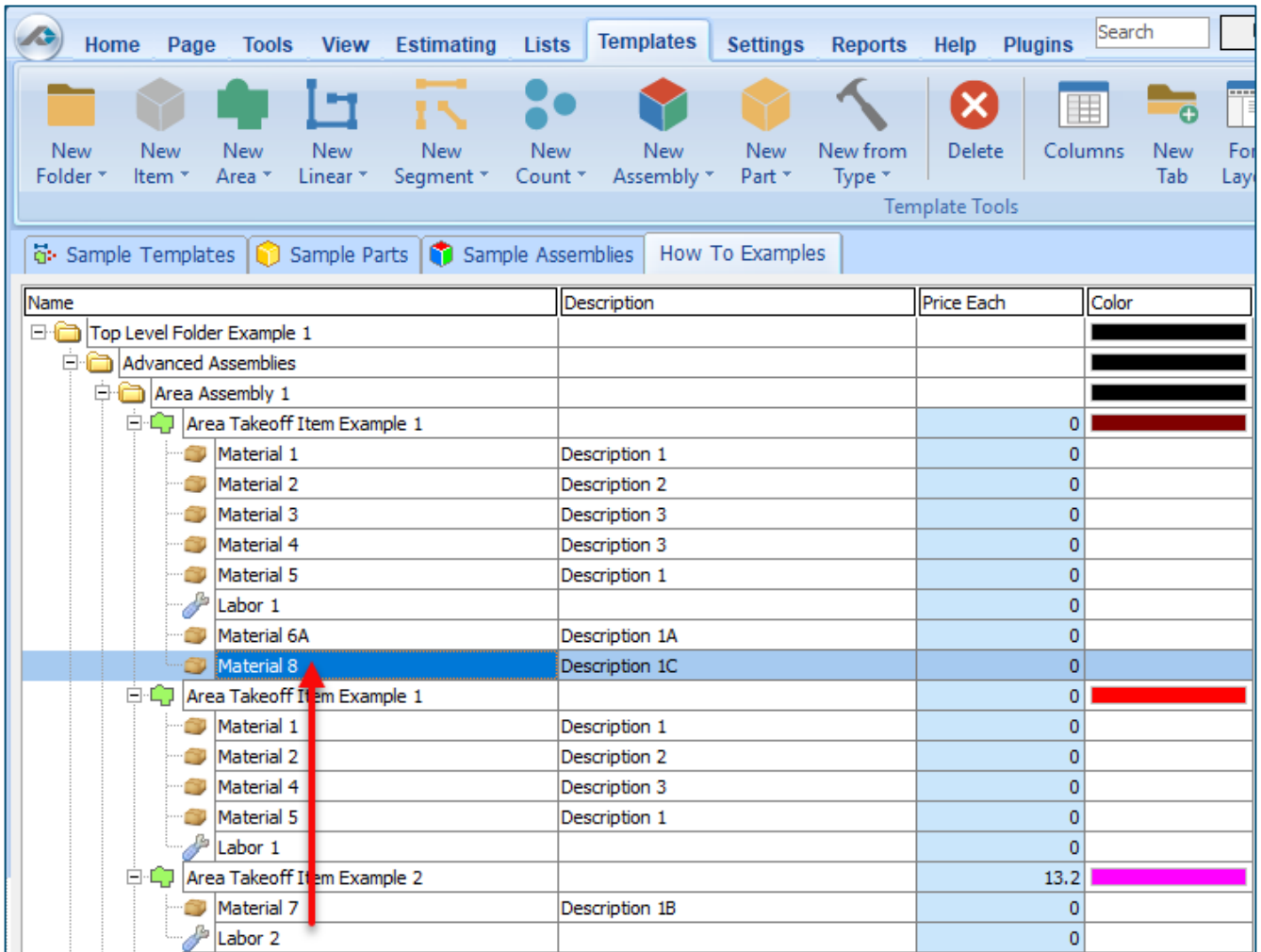


Figure 16

Notice that dragging the part this way *moves* the part from the **Example 2** assembly to the **Example 1** assembly, *not* leaving behind a copy.

The **Templates** sidebar window is a summarized view of everything in the Templates Tab. It is designed for easily dragging and dropping parts and for quickly launching takeoff templates and assemblies.

Parts may be dragged over from the **Templates** sidebar window into the **Templates Tab** window; note that dragging any part from the **Templates** sidebar window makes a copy of it. If, for instance, you want a **Material 7** item added to **Area Takeoff Item Example 1** as a sub-item, simply drag the **Material 7** from the right **Templates** sidebar window over on top of **Area Takeoff Item Example 1** label and release the mouse button. (Figure 17).

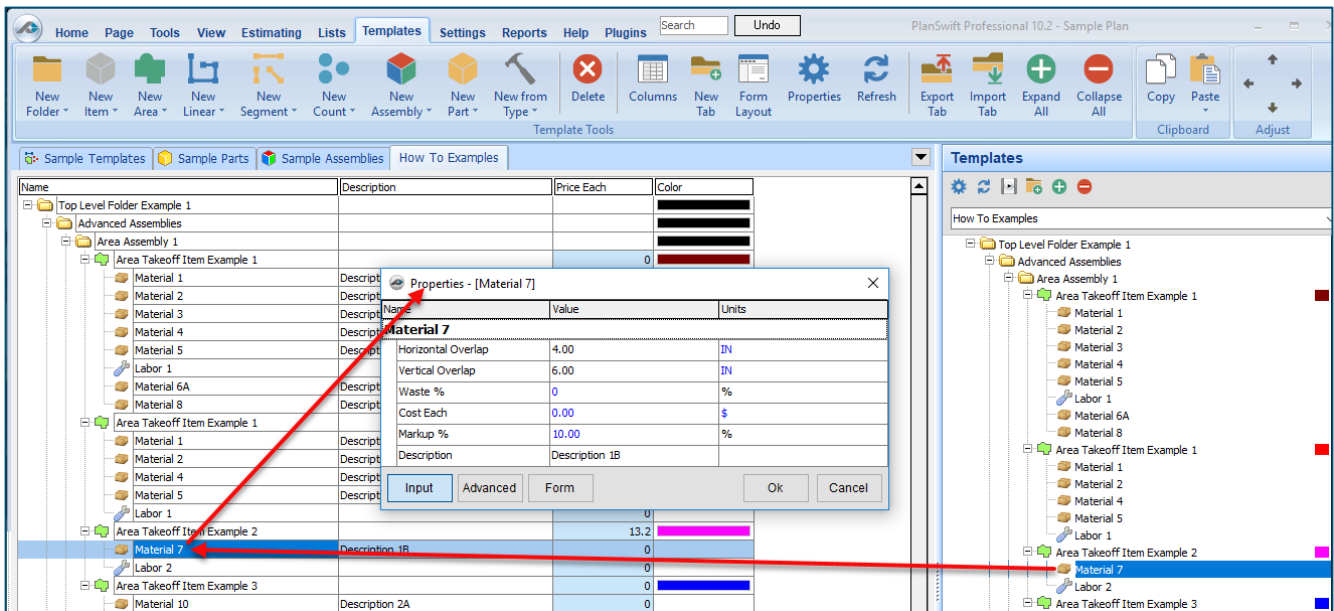


Figure 17

Figure 17 shows the **Material 7** item in place after it was dropped on top of **Area Takeoff Item Example 1**. In addition, the **Properties – [Material 7]** window automatically opens, allowing the user to change any properties for **Material 7**. Click on **Ok** to close the **Properties – [Material 7]** window.

Disclaimer

Any modifications that a user makes to a Starter Pack should always be tested and verified by that user to ensure quantities and calculations are accurate. PlanSwift cannot verify the accuracy of modifications made to templates, parts and assemblies by the user.

FAQ

Question: I've read this user guide, and I still have questions. What do I do?

Answer: We highly recommend new users purchase a training package because training is customized to each user. We offer [one-on-one training](#) and [classroom training](#). Contact training@PlanSwift.com or at 1-888-752-6794 Ext. 4.

Question: Does the Starter Pack include everything a contractor will need to generate an estimate?

Answer: No. A Starter Pack is a tool to get you started toward creating a complete estimate. For example, the Starter Pack does not include industry pricing for materials and labor. However, you can supply prices for materials and labor on the assemblies and labor included in the Starter Pack.

Question: Do I have to input all the pricing for all my parts?












Answer: Inputting pricing is optional. You can use the Starter Pack to generate quantities that you can then send to your supplier, who can then provide you current pricing. Inputting pricing on your own is optional. If your industry's pricing is not subject to frequent changes, you may want to consider inputting your pricing in PlanSwift.

Compendium

Concrete Assemblies

Name	Description	Division	Type	Color
Area Assemblies			Folder	
Basic Assemblies			Folder	
Slab on Grade SQ FT			Area	Blue
Material	Slab on Grade SQ FT		Material	
Labor	Slab on Grade SQ FT		Labor	
Flat Work SQ FT			Area	Olive
Material	Flat Work SQ FT		Material	
Labor	Flat Work SQ FT		Labor	
Suspended Slab SQ FT			Area	Green
Material	Suspended Slab SQ FT		Material	
Labor	Suspended Slab SQ FT		Labor	
Slab on Grade CU YD			Area	Red
Material	Slab on Grade CU YD		Material	
Labor	Slab on Grade CU YD		Labor	
Flat Work CU YD			Area	Cyan
Material	Flat Work CU YD		Material	
Labor	Flat Work CU YD		Labor	
Suspended Slab CU YD			Area	Magenta
Material	Suspended Slab CU YD		Material	
Labor	Suspended Slab CU YD		Labor	
Advanced Assemblies			Folder	
Concrete Slab w/ Rebar Reinf.		03 00 00 Concrete	Area	Blue
Concrete	4" Thick 4000 PSI	03 00 00 Concrete	Material	
1" Gravel	4" Thick, Weight 3800 LBS/CUYD	03 00 00 Concrete	Material	
#4 Rebar	#4 Rebar, 0.668 LBS/FT	03 00 00 Concrete	Material	
15 Mil Vapor Barrier	20' x 200' Roll	03 00 00 Concrete	Material	
2x6 Forms	2x6 16' Lengths		Material	
Pump Truck Rental		03 00 00 Concrete	Equipment	
Concrete Labor	Priced per SQ FT	03 00 00 Concrete	Labor	
Concrete Slab w/ Welded Wire		03 00 00 Concrete	Area	Yellow
Concrete	4" Thick 4000 PSI	03 00 00 Concrete	Material	
1" Gravel	4" Thick, Weight 3800 LBS/CUYD	03 00 00 Concrete	Material	
15 Mil Vapor Barrier	20' x 200' Roll	03 00 00 Concrete	Material	
2x6 Forms	2x6 16' Lengths		Material	
Welded Wire	8'W x 20'L	3 Concrete	Material	
Pump Truck Rental		03 00 00 Concrete	Equipment	
Concrete Labor	Priced per SQ FT	03 00 00 Concrete	Labor	
Suspended Slab		03 00 00 Concrete	Area	Green
Concrete	6" Thick 4000 PSI	03 00 00 Concrete	Material	
1" Gravel	4" Thick, Weight 3800 LBS/CUYD	03 00 00 Concrete	Material	
#4 Rebar	#4 Rebar, 0.668 LBS/FT	03 00 00 Concrete	Material	
15 Mil Vapor Barrier	20' x 200' Roll	03 00 00 Concrete	Material	
2x10 Forms	2x10 16' Lengths		Material	
Pump Truck Rental		03 00 00 Concrete	Equipment	
Concrete Labor	Priced per SQ FT	03 00 00 Concrete	Labor	

Concrete Assemblies—Continued

Name	Description	Division	Type	Color
[-] Tilt Up Wall		03 00 00 Concrete	Area	
Concrete	8" Thick 4000 PSI	03 00 00 Concrete	Material	
1" Gravel	4" Thick, Weight 3800 LBS/CUYD	03 00 00 Concrete	Material	
#4 Rebar	#4 Rebar, 0.668 LBS/FT	03 00 00 Concrete	Material	
15 Mil Vapor Barrier	20' x 200' Roll	03 00 00 Concrete	Material	
2x10 Forms	2x10 16' Lengths		Material	
Pump Truck Rental		03 00 00 Concrete	Equipment	
Concrete Labor	Priced per SQ FT	03 00 00 Concrete	Labor	
[-] Driveway		03 00 00 Concrete	Area	
Concrete	8" Thick 4000 PSI	03 00 00 Concrete	Material	
1" Gravel	4" Thick, Weight 3800 LBS/CUYD	03 00 00 Concrete	Material	
#4 Rebar	#4 Rebar, 0.668 LBS/FT	03 00 00 Concrete	Material	
15 Mil Vapor Barrier	20' x 200' Roll	03 00 00 Concrete	Material	
2x4 Forms	2x4 16' Lengths		Material	
Pump Truck Rental		03 00 00 Concrete	Equipment	
Concrete Labor	Priced per SQ FT	03 00 00 Concrete	Labor	
[-] Sidewalk		03 00 00 Concrete	Area	
Concrete	8" Thick 4000 PSI	03 00 00 Concrete	Material	
1" Gravel	4" Thick, Weight 3800 LBS/CUYD	03 00 00 Concrete	Material	
#4 Rebar	#4 Rebar, 0.668 LBS/FT	03 00 00 Concrete	Material	
15 Mil Vapor Barrier	20' x 200' Roll	03 00 00 Concrete	Material	
2x4 Forms	2x4 16' Lengths		Material	
Pump Truck Rental		03 00 00 Concrete	Equipment	
Concrete Labor	Priced per SQ FT	03 00 00 Concrete	Labor	
[+] Linear Assemblies			Folder	
[-] Basic Assemblies			Folder	
[-] Footing FT			Linear	
Material	Footing FT		Material	
Labor	Footing FT		Labor	
[-] Sidewalk FT		03 00 00 Concrete	Linear	
Material	Sidewalk FT	03 00 00 Concrete	Material	
Labor	Sidewalk FT	03 00 00 Concrete	Labor	
[-] Grade Beam FT		03 00 00 Concrete	Linear	
Material	Grade Beam FT	03 00 00 Concrete	Material	
Labor	Grade Beam FT	03 00 00 Concrete	Labor	
[-] Foundation Wall SQ FT		03 00 00 Concrete	Linear	
Material	Foundation Wall SQ FT	03 00 00 Concrete	Material	
Labor	Foundation Wall SQ FT	03 00 00 Concrete	Labor	
[-] Footing CU YD			Linear	
Material	Footing CU YD		Material	
Labor	Footing CU YD		Labor	
[-] Foundation Wall CU YD			Linear	
Material	Foundation Wall CU YD		Material	
Labor	Foundation Wall CU YD		Labor	

Concrete Assemblies—Continued

Name	Description	Division	Type	Color
Advanced Assemblies			Folder	
Continuous Footing		03 00 00 Concrete	Linear	
Concrete	4000 PSI, 36" W x 24" D	03 00 00 Concrete	Material	
#4 Rebar	Horiz. #4 Rebar, 0.668 LBS/FT	03 00 00 Concrete	Material	
#4 Rebar	Vert. #4 Rebar, 0.668 LBS/FT	03 00 00 Concrete	Material	
Concrete Labor	Priced per FT	03 00 00 Concrete	Labor	
Grade Beam		03 00 00 Concrete	Linear	
Concrete	4000 PSI, 16" W x 24" D	03 00 00 Concrete	Material	
#4 Rebar	#4 Rebar, 0.668 LBS/FT	03 00 00 Concrete	Material	
#4 Rebar	#4 Rebar, 0.668 LBS/FT	03 00 00 Concrete	Material	
#4 - 10" x 12" Rebar Stirrup	12" O.C. Spacing, 0 per Row	03 00 00 Concrete	Material	
Concrete Labor FT	Priced per FT	03 00 00 Concrete	Labor	
Foundation Wall		03 00 00 Concrete	Linear	
Concrete	4000 PSI, 8" W x 8' H	03 00 00 Concrete	Material	
#4 Rebar	Horiz. #4 Rebar, 12" O.C., 0.668 LBS/FT,	03 00 00 Concrete	Material	
#4 Rebar	8' Vertical #4 Rebar, 12" O.C., 0.668 LBS/FT	03 00 00 Concrete	Material	
Concrete Labor SQ FT	Priced per Sq Ft	03 00 00 Concrete	Labor	
Segment Assemblies			Folder	
Basic Assemblies			Folder	
Footing FT			Segment	
Material	Footing FT		Material	
Labor	Footing FT		Labor	
Grade Beam FT			Segment	
Material	Grade Beam FT		Material	
Labor	Grade Beam FT		Labor	
Foundation Wall FT			Segment	
Material	Foundation Wall FT		Material	
Labor	Foundation Wall FT		Labor	
Sidewalk FT		03 00 00 Concrete	Segment	
Material	Sidewalk FT	03 00 00 Concrete	Material	
Labor	Sidewalk FT	03 00 00 Concrete	Labor	
Continuous Footing FT		03 00 00 Concrete	Segment	
Material	Continuous Footing FT	03 00 00 Concrete	Material	
Labor	Continuous Footing FT	03 00 00 Concrete	Labor	
Grade Beam FT		03 00 00 Concrete	Segment	
Material	Grade Beam FT	03 00 00 Concrete	Material	
Labor	Grade Beam FT	03 00 00 Concrete	Labor	
Foundation Wall SQ FT		03 00 00 Concrete	Segment	
Material	Foundation Wall SQ FT	03 00 00 Concrete	Material	
Labor	Foundation Wall SQ FT	03 00 00 Concrete	Labor	
Footing CU YD			Segment	
Material	Footing CU YD		Material	
Labor	Footing CU YD		Labor	
Grade Beam CU YD			Segment	
Material	Grade Beam CU YD		Material	
Labor	Grade Beam CU YD		Labor	

Concrete Assemblies—Continued

Name	Description	Division	Type	Color
[-] Foundation Wall CU YD			Segment	Green
[-] Material	Foundation Wall CU YD		Material	
[-] Labor	Foundation Wall CU YD		Labor	
[-] Advanced Assemblies			Folder	Black
[-] Continuous Footing		03 00 00 Concrete	Segment	Green
[-] Concrete	4000 PSI, 36" W x 24" D	03 00 00 Concrete	Material	
[-] #4 Rebar	Horiz. #4 Rebar, 0.668 LBS/FT	03 00 00 Concrete	Material	
[-] #4 Rebar	Vert. #4 Rebar, 0.668 LBS/FT	03 00 00 Concrete	Material	
[-] Concrete Labor	Priced per FT	03 00 00 Concrete	Labor	
[-] Grade Beam		03 00 00 Concrete	Segment	Red
[-] Concrete	4000 PSI, 16" W x 24" D	03 00 00 Concrete	Material	
[-] #4 Rebar	#4 Rebar, 0.668 LBS/FT	03 00 00 Concrete	Material	
[-] #4 Rebar	#4 Rebar, 0.668 LBS/FT	03 00 00 Concrete	Material	
[-] #4 - 10" x 12" Rebar Stirrup	12" O.C. Spacing, 0 per Row	03 00 00 Concrete	Material	
[-] Concrete Labor FT	Priced per FT	03 00 00 Concrete	Labor	
[-] Foundation Wall		03 00 00 Concrete	Segment	Teal
[-] Concrete	4000 PSI, 8" W x 8' H	03 00 00 Concrete	Material	
[-] #4 Rebar	Horiz. #4 Rebar, 12" O.C., 0.668 LBS/FT,	03 00 00 Concrete	Material	
[-] #4 Rebar	8' Vertical #4 Rebar, 12" O.C., 0.668 LBS/FT	03 00 00 Concrete	Material	
[-] Concrete Labor	Priced per Sq Ft	03 00 00 Concrete	Labor	
[-] Count Assemblies			Folder	Black
[-] Basic Assemblies			Folder	Black
[-] Stepped Footing			Count	Purple
[-] Material	Stepped Footing		Material	
[-] Labor	Stepped Footing		Labor	
[-] Spot Footing			Count	Blue
[-] Material	Spot Footing		Material	
[-] Labor	Spot Footing		Labor	
[-] Wall Corner			Count	Olive
[-] Material	Wall Corner		Material	
[-] Labor	Wall Corner		Labor	
[-] Round Column			Count	Green
[-] Material	Round Column		Material	
[-] Labor	Round Column		Labor	
[-] Square Column			Count	Red
[-] Material	Square Column		Material	
[-] Labor	Square Column		Labor	
[-] Column Reinforcement			Count	Cyan
[-] Material	Column Reinforcement		Material	
[-] Labor	Column Reinforcement		Labor	
[-] Slab Reinforcement			Count	Magenta
[-] Material	Slab Reinforcement		Material	
[-] Labor	Slab Reinforcement		Labor	
[-] Outside Corner Reinforcement			Count	Blue
[-] Material	Outside Corner Reinforcement		Material	
[-] Labor	Outside Corner Reinforcement		Labor	

Concrete Assemblies—Continued

Name	Description	Division	Type	Color
[-] Inside Corner Reinforcement			Count	Yellow
[-] Material	Inside Corner Reinforcement		Material	
[-] Labor	Inside Corner Reinforcement		Labor	
[+] Advanced Assemblies			Folder	Black
[-] Square Spot Footing		03 00 00 Concrete	Count	Yellow
[-] Concrete	4000 PSI	03 00 00 Concrete	Material	
[-] #4 Rebar	#4 Rebar, 0.668 LBS/FT	03 00 00 Concrete	Material	
[-] Concrete Labor	Priced per SQ FT	03 00 00 Concrete	Labor	
[-] Square Column		03 00 00 Concrete	Count	Green
[-] Concrete	4000 PSI	03 00 00 Concrete	Material	
[-] #4 Rebar	#4 Rebar, 0.668 LBS/FT	03 00 00 Concrete	Material	
[-] #4 - 6" x 12" Rebar Stirrup	12" O.C. Spacing, 1 per Row	03 00 00 Concrete	Material	
[-] Concrete Labor	Priced EA	03 00 00 Concrete	Labor	
[-] Round Column		03 00 00 Concrete	Count	Red
[-] Concrete	4000 PSI	03 00 00 Concrete	Material	
[-] #4 Rebar	#4 Rebar, 0.668 LBS/FT	03 00 00 Concrete	Material	
[-] #4 - 20" x 62.83" Rebar Round Stirrups	12" O.C. Spacing, 1 per Row	03 00 00 Concrete	Material	
[-] Concrete Labor	Priced EA	03 00 00 Concrete	Labor	
[-] Round Concrete Pier		03 00 00 Concrete	Count	Teal
[-] Concrete	4000 PSI	03 00 00 Concrete	Material	
[-] # Rebar	# Rebar, 0 LBS/FT	03 00 00 Concrete	Material	
[-] #3 Rebar 20" D Round Stirrups	12" O.C. Spacing, 1 per Row	03 00 00 Concrete	Material	
[-] 5/8" x 12" Anchor Bolts		03 00 00 Concrete	Material	
[-] Concrete Labor	Priced EA	03 00 00 Concrete	Labor	

Concrete Parts

Name	Description	Division	Type	Color
Area Takeoff Parts			Folder	
Base			Folder	
Pea Gravel	Pea Gravel - 3500 LBS per CuYd	3 Concrete	Material	
No. 4 Gravel	No. 4 Gravel - 3500 LBS per CuYd	3 Concrete	Material	
Crushed Gravel	Crushed Gravel - 3500 LBS per CuYd	3 Concrete	Material	
Gravel	Gravel - 3500 LBS per CuYd	3 Concrete	Material	
Concrete			Folder	
Concrete	Ready Mix 3,500 PSI, 4" Concrete	3 Concrete	Material	
Concrete Topping	300 SQ FT per Bag	3 Concrete	Material	
Concrete Stain	300 SQ FT per GAL	3 Concrete	Material	
Steel			Folder	
Rebar Priced per FT			Folder	
#2 Rebar	#2 Rebar, 0.167 LBS/FT	3 Concrete	Material	
#3 Rebar	#3 Rebar, 0.376 LBS/FT	3 Concrete	Material	
#4 Rebar	#4 Rebar, 0.668 LBS/FT	3 Concrete	Material	
#5 Rebar	#5 Rebar, 1.043 LBS/FT	3 Concrete	Material	
#6 Rebar	#6 Rebar, 1.502 LBS/FT	3 Concrete	Material	
#7 Rebar	#7 Rebar, 2.044 LBS/FT	3 Concrete	Material	
#8 Rebar	#8 Rebar, 2.67 LBS/FT	3 Concrete	Material	
#9 Rebar	#9 Rebar, 3.4 LBS/FT	3 Concrete	Material	
#10 Rebar	#10 Rebar, 4.303 LBS/FT	3 Concrete	Material	
#11 Rebar	#11 Rebar, 5.313 LBS/FT	3 Concrete	Material	
#14 Rebar	#14 Rebar, 7.65 LBS/FT	3 Concrete	Material	
#18 Rebar	#18 Rebar, 13.6 LBS/FT	3 Concrete	Material	
Mesh Priced per Sheet			Folder	
2"x2" Welded Wire	7.5' x 20' Sheets, 150 SQ FT approx coverage (with lap)	3 Concrete	Material	
4"x4" Welded Wire	7.5' x 20' Sheets, 150 SQ FT approx coverage (with lap)	3 Concrete	Material	
3"x3" Welded Wire	7.5' x 20' Sheets, 150 SQ FT approx coverage (with lap)	3 Concrete	Material	
6"x6" Welded Wire	7.5' x 20' Sheets, 150 SQ FT approx coverage (with lap)	3 Concrete	Material	
12"x12" Welded Wire	7.5' x 20' Sheets, 150 SQ FT approx coverage (with lap)	3 Concrete	Material	
Rebar Priced per Bar			Folder	
#2 Rebar	#2 Rebar, 0.167 LBS/FT	3 Concrete	Material	
#4 Rebar	#4 Rebar, 0.668 LBS/FT	3 Concrete	Material	
#3 Rebar	#3 Rebar, 0.376 LBS/FT	3 Concrete	Material	
#5 Rebar	#5 Rebar, 1.043 LBS/FT	3 Concrete	Material	
#6 Rebar	#6 Rebar, 1.502 LBS/FT	3 Concrete	Material	
#7 Rebar	#7 Rebar, 2.044 LBS/FT	3 Concrete	Material	
#8 Rebar	#8 Rebar, 2.67 LBS/FT	3 Concrete	Material	
#9 Rebar	#9 Rebar, 3.4 LBS/FT	3 Concrete	Material	
#10 Rebar	#10 Rebar, 4.303 LBS/FT	3 Concrete	Material	
#11 Rebar	#11 Rebar, 5.313 LBS/FT	3 Concrete	Material	
#14 Rebar	#14 Rebar, 7.65 LBS/FT	3 Concrete	Material	
#18 Rebar	#18 Rebar, 13.6 LBS/FT	3 Concrete	Material	

Concrete Parts—Continued

Name	Description	Division	Type	Color
Rebar Priced per LBS			Folder	
#2 Rebar	#2 Rebar, 0.167 LBS/FT	3 Concrete	Material	
#4 Rebar	#4 Rebar, 0.668 LBS/FT	3 Concrete	Material	
#3 Rebar	#3 Rebar, 0.376 LBS/FT	3 Concrete	Material	
#5 Rebar	#5 Rebar, 1.043 LBS/FT	3 Concrete	Material	
#6 Rebar	#6 Rebar, 1.502 LBS/FT	3 Concrete	Material	
#7 Rebar	#7 Rebar, 2.044 LBS/FT	3 Concrete	Material	
#8 Rebar	#8 Rebar, 2.67 LBS/FT	3 Concrete	Material	
#9 Rebar	#9 Rebar, 3.4 LBS/FT	3 Concrete	Material	
#10 Rebar	#10 Rebar, 4.303 LBS/FT	3 Concrete	Material	
#11 Rebar	#11 Rebar, 5.313 LBS/FT	3 Concrete	Material	
#14 Rebar	#14 Rebar, 7.65 LBS/FT	3 Concrete	Material	
#18 Rebar	#18 Rebar, 13.6 LBS/FT	3 Concrete	Material	
.6" Post Tension Cables LBS	0.74 LBS/FT	3 Concrete	Material	
Rebar Ties	1000 per Box		Material	
.6" Post Tension Cables FT		3 Concrete	Material	
Rebar Chairs	50 per Box		Material	
Vapor Barrier			Folder	
15 mil Vapor Barrier	20' x 100' roll, High Performance Polyethylene	3 Concrete	Material	
10 mil Vapor Barrier	20' x 100' roll, High Performance Polyethylene	3 Concrete	Material	
Forms			Folder	
3/4" Plywood	4' x 8' Sheets		Material	
3/4" OSB T&G	4' x 8' Sheets		Material	
2x4 Forms	2x4x16		Material	
2x6 Forms	2x6x16		Material	
2x8 Forms	2x8x16		Material	
2x10 Forms	2x10x16		Material	
2x12 Forms	2x12x16		Material	
Labor			Folder	
Concrete Labor SQ FT	Priced per Sq Ft		Labor	
SOG Labor SQ FT	Priced per Sq Ft		Labor	
Suspended Slab Labor SQ FT	Priced per Sq Ft		Labor	
Stamping Labor SQ FT	Priced per Sq Ft		Labor	
Sealing Labor SQ FT	Priced per Sq Ft		Labor	
Slab Forming Labor FT	Priced per Ft		Labor	
Slab Forming Labor Hours			Labor	
Pour and Finish Labor Hours			Labor	
Rebar Labor SQ FT	Priced per Sq Ft		Labor	
Equipment			Folder	
Pump Truck Rental			Equipment	

Concrete Parts—Continued

Name	Description	Division	Type	Color
Linear Takeoff Parts			Folder	
Base			Folder	
Pea Gravel	Pea Gravel - 3500 LBS per CuYd	3 Concrete	Material	
No. 4 Gravel	No. 4 Gravel - 3500 LBS per CuYd	3 Concrete	Material	
Crushed Gravel	Crushed Gravel - 3500 LBS per CuYd	3 Concrete	Material	
Gravel	Gravel - 3500 LBS per CuYd	3 Concrete	Material	
Road Base	Gravel - 3500 LBS per CuYd	3 Concrete	Material	
Concrete			Folder	
Footing Concrete		3 Concrete	Material	
Foundation Wall Concrete		3 Concrete	Material	
Steel			Folder	
Rebar Priced per LBS			Folder	
# of Runs			Folder	
#2 Rebar	#2 Rebar, 0.167 LBS/FT	3 Concrete	Material	
#3 Rebar	#3 Rebar, 0.376 LBS/FT	3 Concrete	Material	
#4 Rebar	#4 Rebar, 0.668 LBS/FT	3 Concrete	Material	
#5 Rebar	#5 Rebar, 1.043 LBS/FT	3 Concrete	Material	
#6 Rebar	#6 Rebar, 1.502 LBS/FT	3 Concrete	Material	
#7 Rebar	#7 Rebar, 2.044 LBS/FT	3 Concrete	Material	
#8 Rebar	#8 Rebar, 2.67 LBS/FT	3 Concrete	Material	
#9 Rebar	#9 Rebar, 3.4 LBS/FT	3 Concrete	Material	
#10 Rebar	#10 Rebar, 4.303 LBS/FT	3 Concrete	Material	
#11 Rebar	#11 Rebar, 5.313 LBS/FT	3 Concrete	Material	
#14 Rebar	#14 Rebar, 7.65 LBS/FT	3 Concrete	Material	
#18 Rebar	#18 Rebar, 13.6 LBS/FT	3 Concrete	Material	
OC Spacing			Folder	
#2 Rebar	#2 Rebar, 0.167 LBS/FT	3 Concrete	Material	
#3 Rebar	#3 Rebar, 0.376 LBS/FT	3 Concrete	Material	
#4 Rebar	#4 Rebar, 0.668 LBS/FT	3 Concrete	Material	
#5 Rebar	#5 Rebar, 1.043 LBS/FT	3 Concrete	Material	
#6 Rebar	#6 Rebar, 1.502 LBS/FT	3 Concrete	Material	
#7 Rebar	#7 Rebar, 2.044 LBS/FT	3 Concrete	Material	
#8 Rebar	#8 Rebar, 2.67 LBS/FT	3 Concrete	Material	
#9 Rebar	#9 Rebar, 3.4 LBS/FT	3 Concrete	Material	
#10 Rebar	#10 Rebar, 4.303 LBS/FT	3 Concrete	Material	
#11 Rebar	#11 Rebar, 5.313 LBS/FT	3 Concrete	Material	
#14 Rebar	#14 Rebar, 7.65 LBS/FT	3 Concrete	Material	
#18 Rebar	#18 Rebar, 13.6 LBS/FT	3 Concrete	Material	

Concrete Parts—Continued

Name	Description	Division	Type	Color
Rebar Priced per FT			Folder	■
Horizontals Priced per FT			Folder	■
#2 Rebar	#2 Rebar, 0.167 LBS/FT	3 Concrete	Material	
#3 Rebar	#3 Rebar, 0.376 LBS/FT	3 Concrete	Material	
#4 Rebar	#4 Rebar, 0.668 LBS/FT	3 Concrete	Material	
#5 Rebar	#5 Rebar, 1.043 LBS/FT	3 Concrete	Material	
#6 Rebar	#6 Rebar, 1.502 LBS/FT	3 Concrete	Material	
#7 Rebar	#7 Rebar, 2.044 LBS/FT	3 Concrete	Material	
#8 Rebar	#8 Rebar, 2.67 LBS/FT	3 Concrete	Material	
#9 Rebar	#9 Rebar, 3.4 LBS/FT	3 Concrete	Material	
#10 Rebar	#10 Rebar, 4.303 LBS/FT	3 Concrete	Material	
#11 Rebar	#11 Rebar, 5.313 LBS/FT	3 Concrete	Material	
#14 Rebar	#14 Rebar, 7.65 LBS/FT	3 Concrete	Material	
#18 Rebar	#18 Rebar, 13.6 LBS/FT	3 Concrete	Material	
Verticals Priced per FT			Folder	■
#2 Rebar	#2 Rebar, 0.167 LBS/FT	3 Concrete	Material	
#3 Rebar	#3 Rebar, 0.376 LBS/FT	3 Concrete	Material	
#4 Rebar	#4 Rebar, 0.668 LBS/FT	3 Concrete	Material	
#5 Rebar	#5 Rebar, 1.043 LBS/FT	3 Concrete	Material	
#6 Rebar	#6 Rebar, 1.502 LBS/FT	3 Concrete	Material	
#7 Rebar	#7 Rebar, 2.044 LBS/FT	3 Concrete	Material	
#8 Rebar	#8 Rebar, 2.67 LBS/FT	3 Concrete	Material	
#9 Rebar	#9 Rebar, 3.4 LBS/FT	3 Concrete	Material	
#10 Rebar	#10 Rebar, 4.303 LBS/FT	3 Concrete	Material	
#11 Rebar	#11 Rebar, 5.313 LBS/FT	3 Concrete	Material	
#14 Rebar	#14 Rebar, 7.65 LBS/FT	3 Concrete	Material	
#18 Rebar	#18 Rebar, 13.6 LBS/FT	3 Concrete	Material	
5/8" Anchor Bolts	30" OC	3 Concrete	Material	
Vapor Tape	4" x 180' roll, High Performance Polyethylene	3 Concrete	Material	
PT Anchors	24" OC	3 Concrete	Material	
Rebar Chairs	30" OC	3 Concrete	Material	
#4 Hairpins	24" OC	3 Concrete	Material	
Vapor Barrier			Folder	■
15 mil Vapor Barrier	20' x 100' roll, High Performance Polyethylene	3 Concrete	Material	
10 mil Vapor Barrier	20' x 100' roll, High Performance Polyethylene	3 Concrete	Material	
Forms			Folder	■
3/4" Plywood	4' x 8' Sheets		Material	
3/4" OSB T&G	4' x 8' Sheets		Material	
2x4 Forms	2x4x16		Material	
2x6 Forms	2x6x16		Material	
2x8 Forms	2x8x16		Material	
2x10 Forms	2x10x16		Material	
2x12 Forms	2x12x16		Material	

Concrete Parts—Continued

Name	Description	Division	Type	Color
[-] Labor			Folder	██████
[-] Footing Forming Labor FT			Labor	
[-] Slab Forming Labor FT			Labor	
[-] Rebar Labor SQ FT			Labor	
[-] Wall Forming Labor SQ FT			Labor	
[-] Wall Forming Labor Hours	Priced per Hour		Labor	
[-] Slab Forming Labor Hours	Priced per Hour		Labor	
[-] Equipment			Folder	██████
[-] Pump Truck Rental			Equipment	
[-] Count Takeoff Parts			Folder	██████
[-] Base			Folder	██████
[-] Gravel	Gravel - 3500 LBS per CuYd	3 Concrete	Material	
[-] No. 4 Gravel	Gravel - 3500 LBS per CuYd	3 Concrete	Material	
[-] Crushed Gravel	Gravel - 3500 LBS per CuYd	3 Concrete	Material	
[-] Pea Gravel	Gravel - 3500 LBS per CuYd	3 Concrete	Material	
[-] Road Base	Gravel - 3500 LBS per CuYd	3 Concrete	Material	
[-] Concrete			Folder	██████
[-] Round Column			Folder	██████
[-] Concrete	3,500 PSI, 12" Dia x 10' High	3 Concrete	Material	
[-] Round Spot Footing			Folder	██████
[-] Concrete	3,500 PSI, 12" Dia x 10' High	3 Concrete	Material	
[-] Square Column			Folder	██████
[-] Concrete	3,500 PSI, 2' W x 2' L x 8' D	3 Concrete	Material	
[-] Square Spot Footing			Folder	██████
[-] Concrete	3,500 PSI, 2' W x 2' L x 12' D	3 Concrete	Material	
[-] Steel			Folder	██████
[-] Rebar Priced per Bar			Folder	██████
[-] #2 Rebar	#2 Rebar, 0.167 LBS/FT	3 Concrete	Material	
[-] #3 Rebar	#3 Rebar, 0.376 LBS/FT	3 Concrete	Material	
[-] #4 Rebar	#4 Rebar, 0.668 LBS/FT	3 Concrete	Material	
[-] #5 Rebar	#5 Rebar, 1.043 LBS/FT	3 Concrete	Material	
[-] #6 Rebar	#6 Rebar, 1.502 LBS/FT	3 Concrete	Material	
[-] #7 Rebar	#7 Rebar, 2.044 LBS/FT	3 Concrete	Material	
[-] #8 Rebar	#8 Rebar, 2.67 LBS/FT	3 Concrete	Material	
[-] #9 Rebar	#9 Rebar, 3.4 LBS/FT	3 Concrete	Material	
[-] #10 Rebar	#10 Rebar, 4.303 LBS/FT	3 Concrete	Material	
[-] #11 Rebar	#11 Rebar, 5.313 LBS/FT	3 Concrete	Material	
[-] #14 Rebar	#14 Rebar, 7.65 LBS/FT	3 Concrete	Material	
[-] #18 Rebar	#18 Rebar, 13.6 LBS/FT	3 Concrete	Material	

Concrete Parts—Continued

Name	Description	Division	Type	Color
Rebar Priced per LBS			Folder	
#2 Rebar	#2 Rebar, 0.167 LBS/FT	3 Concrete	Material	
#3 Rebar	#3 Rebar, 0.376 LBS/FT	3 Concrete	Material	
#4 Rebar	#4 Rebar, 0.668 LBS/FT	3 Concrete	Material	
#5 Rebar	#5 Rebar, 1.043 LBS/FT	3 Concrete	Material	
#6 Rebar	#6 Rebar, 1.502 LBS/FT	3 Concrete	Material	
#7 Rebar	#7 Rebar, 2.044 LBS/FT	3 Concrete	Material	
#8 Rebar	#8 Rebar, 2.67 LBS/FT	3 Concrete	Material	
#9 Rebar	#9 Rebar, 3.4 LBS/FT	3 Concrete	Material	
#10 Rebar	#10 Rebar, 4.303 LBS/FT	3 Concrete	Material	
#11 Rebar	#11 Rebar, 5.313 LBS/FT	3 Concrete	Material	
#14 Rebar	#14 Rebar, 7.65 LBS/FT	3 Concrete	Material	
#18 Rebar	#18 Rebar, 13.6 LBS/FT	3 Concrete	Material	
Rebar Priced Per FT			Folder	
#2 Rebar	#2 Rebar, 0.167 LBS/FT	3 Concrete	Material	
#3 Rebar	#3 Rebar, 0.376 LBS/FT	3 Concrete	Material	
#4 Rebar	#4 Rebar, 0.668 LBS/FT	3 Concrete	Material	
#5 Rebar	#5 Rebar, 1.043 LBS/FT	3 Concrete	Material	
#6 Rebar	#6 Rebar, 1.502 LBS/FT	3 Concrete	Material	
#7 Rebar	#7 Rebar, 2.044 LBS/FT	3 Concrete	Material	
#8 Rebar	#8 Rebar, 2.67 LBS/FT	3 Concrete	Material	
#9 Rebar	#9 Rebar, 3.4 LBS/FT	3 Concrete	Material	
#10 Rebar	#10 Rebar, 4.303 LBS/FT	3 Concrete	Material	
#11 Rebar	#11 Rebar, 5.313 LBS/FT	3 Concrete	Material	
#14 Rebar	#14 Rebar, 7.65 LBS/FT	3 Concrete	Material	
#18 Rebar	#18 Rebar, 13.6 LBS/FT	3 Concrete	Material	
Rebar Stirrups	3' Stirrup, #4 Rebar	3 Concrete	Material	
Rebar Chairs	2" Plastic chairs	3 Concrete	Material	
1" Stud Rails	1"W x 1/4"T x 36"L w/ 1/2" Studs	3 Concrete	Material	
7" Studs	3/8" x 7" Studs	3 Concrete	Material	
4-0 3-6 Window Buck	18 gauge galvanized steel	3 Concrete	Material	
5-0 4-0 Window Buck	18 gauge galvanized steel	3 Concrete	Material	
4-0 4-0 Window Buck	18 gauge galvanized steel	3 Concrete	Material	
6-0 4-0 Window Buck	18 gauge galvanized steel	3 Concrete	Material	
2-8 6-8 Door Buck	18 gauge galvanized steel	3 Concrete	Material	
3-0 7-0 Door Buck	18 gauge galvanized steel	3 Concrete	Material	
3-0 6-8 Door Buck	18 gauge galvanized steel	3 Concrete	Material	

Concrete Parts—Continued

Name	Description	Division	Type	Color
Forms			Folder	■
3/4" Plywood	4' x 8' Sheets		Material	
3/4" OSB T&G	4' x 8' Sheets		Material	
2x4 Forms	2x4x16		Material	
2x6 Forms	2x6x16		Material	
2x8 Forms	2x8x16		Material	
2x10 Forms	2x10x16		Material	
2x12 Forms	2x12x16		Material	
Labor			Folder	■
Column Labor			Labor	
Spot Footing Labor			Labor	
Stud and Reinf Labor			Labor	
Column Labor Hours			Labor	
Equipment			Folder	■
Pump Truck Rental			Equipment	
Lump Sum Parts			Folder	■
Base			Folder	■
Gravel TONS		3 Concrete	Material	
Gravel CU YD		3 Concrete	Material	
Aggregate Base TONS		3 Concrete	Material	
Aggregate Base CU YD		3 Concrete	Material	
Concrete			Folder	■
14"x4" Concrete Trowel	Wood handle	3 Concrete	Material	
20" Mag Float	Wood handle	3 Concrete	Material	
1"x3"x30" Wood Stakes	50 per bundle	3 Concrete	Material	
2"x2"x6" Hub Stakes	25 per bundle	3 Concrete	Material	
Concrete		03 00 00 Concrete	Subcontract	
Concrete Testing		03 00 00 Concrete	Subcontract	
Steel			Folder	■
Pre-Cast Window Well	4000 PSI	3 Concrete	Material	
4"x4" Rebar Caps	50 per box	3 Concrete	Material	
2-1/2" Rebar Chairs	300 per box	3 Concrete	Material	
Vapor Barrier			Folder	■
15 mil Vapor Barrier	20' x 100' roll, High Performance Polyethylene	3 Concrete	Material	
Vapor Tape	4" x 180' roll, High Performance Polyethylene	3 Concrete	Material	
Labor			Folder	■
Labor Hours			Labor	
Labor		03 00 00 Concrete	Labor	
Equipment			Folder	■
Back Hoe		03 00 00 Concrete	Equipment	
Track Hoe		03 00 00 Concrete	Equipment	
Skid Steer		03 00 00 Concrete	Equipment	
Pump Truck Rental			Equipment	