

Concrete Starter Pack

User Guide

UPDATED ON 11/21/2018

PlanSwift

Authored by: Dave Hansen



Table of Contents

Overview	3
Purchasing and Installation	4
Purchasing Plugins.....	4
Installation and Uninstallation	4
Features.....	4
How To	5
How to: Copy and Paste an Assembly.....	5
How to: Copy and Paste Parts.....	10
How to: Drag and Drop Parts	15
FAQ.....	17
Compendium.....	18
Concrete -- Concrete (Div 3).....	18
Concrete -- Rebar	20

Overview

This guide will teach you how to properly use the tools and features found within the Concrete starter pack. It is designed for use with PlanSwift® Takeoff and Estimating Software. This guide is not meant to be a step-by-step “walk through” document, although it can be used as a reference for getting the work done. If you encounter technical difficulty, consult this guide (including the [FAQ](#) section of this user manual) or contact the technical support department at:

PlanSwift® Technical Support
support@PlanSwift.com
1-888-752-6794 ext. 2

PlanSwift also offers additional training. For training options, contact the training department at:

PlanSwift® Training Department
training@PlanSwift.com
1-888-752-6794 ext. 4

Purchasing and Installation

Purchasing Plugins

If you need to purchase PlanSwift or a plugin product, contact the Sales Department at:

PlanSwift® Sales
sales@PlanSwift.com
1-888-752-6794 Ext. 1

Installation and Uninstallation

Installing and uninstalling starter packs is simple. For installing them, click on the Import Plugin Package icon (arrow 1 in Figure 1) from the PlanSwift Main Ribbon-bar **Plugin** tab (arrow 3 of Figure 1) and follow the prompts from there. For uninstalling, click on the Uninstall Plugin (arrow 2 in Figure 1) and follow those prompts.

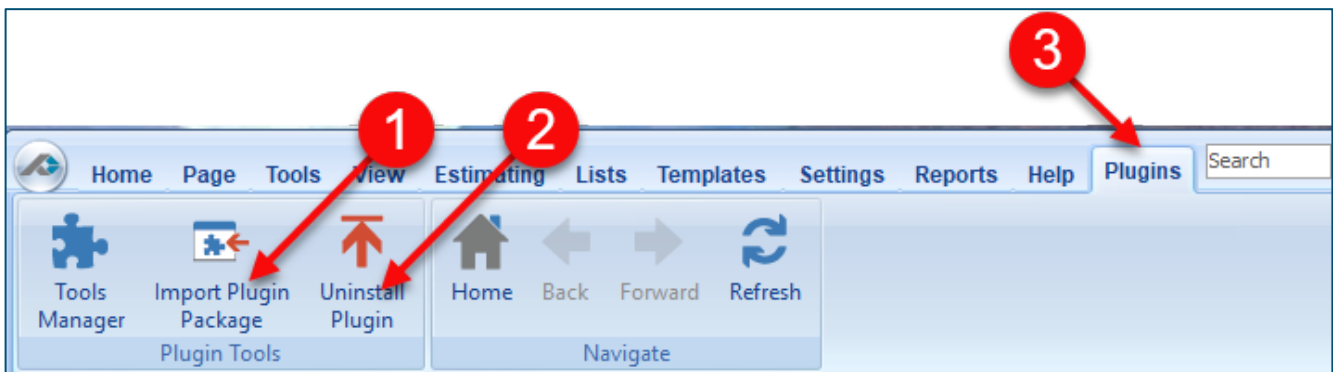


Figure 1

Features

The Concrete Starter Pack includes parts and assemblies found in the Templates tab of PlanSwift. These are listed in the [Compendium](#) at the end of this guide. With these Concrete assemblies and parts, PlanSwift users can easily customize assemblies and parts for later use. Starter Packs contain a large library of prebuilt templates, parts and assemblies. Modifying the library of parts and assemblies for any Starter Pack allows users the ability to customize their Templates to their specific needs. Users will save

countless hours of setup by utilizing a Starter Pack as their starting point for building custom parts and assemblies. The instructions below will guide new users through the basics of modifying parts and assemblies. We highly recommend purchasing a training package for accelerated learning and faster customization.

How To

How to: Copy and Paste an Assembly

The purpose of copying and pasting an assembly is to allow the user to copy and then modify the assembly for later use. As an example, you may want two different assemblies: one might include a part, and another might have an alternative part or not include that part at all. By copying one assembly and then modifying and renaming the copy (for easy identification), you can have two different assemblies available, allowing for easier and faster takeoffs. Figure 2 shows the **Templates Tab** (arrow 1) and the **Area Takeoff Item Example 1** assembly (arrow 2). If you want to add another assembly but with no **Material 3**, then you would click on the assembly you want to copy (arrow 2), click on **Copy** (arrow 3), and then click on **Paste** (arrow 4).

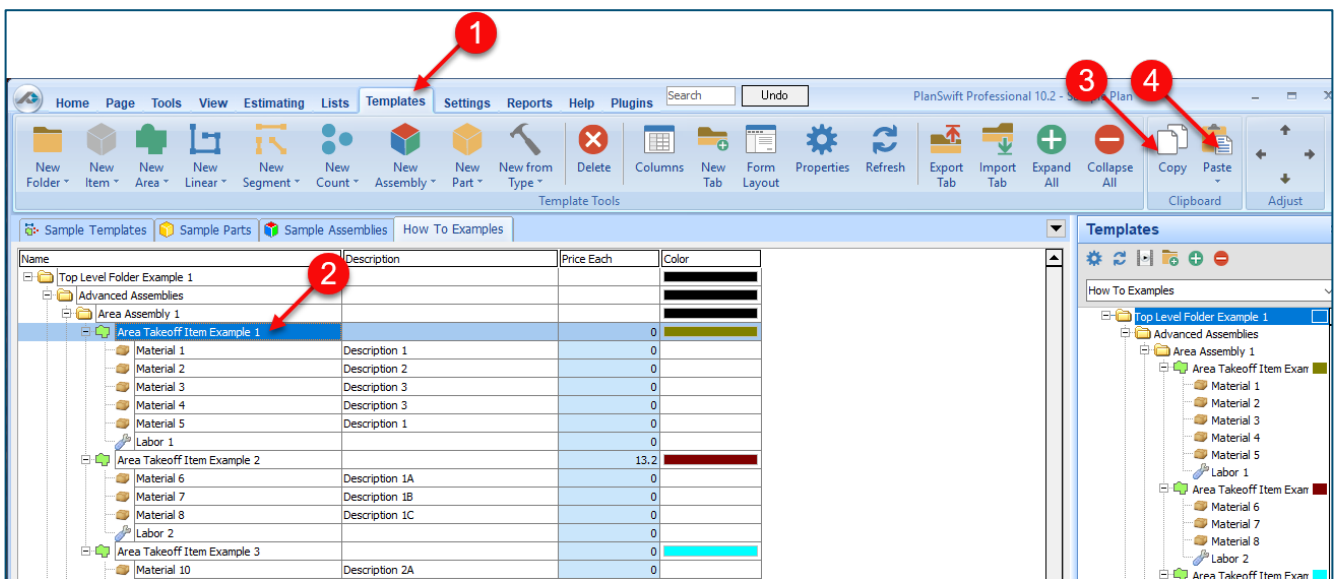


Figure 2

Figure 3 shows the original (arrows 1) and new **Area Takeoff Item Example 1** assembly (arrow 2). To delete the **Material 3** (arrow 3) from the newly created **Area Takeoff Item Example 1** assembly (arrow 2), click on **Material 3** (arrow 3), click on **Delete** (arrow 4), and click on **OK** in the popup window to confirm the deletion.

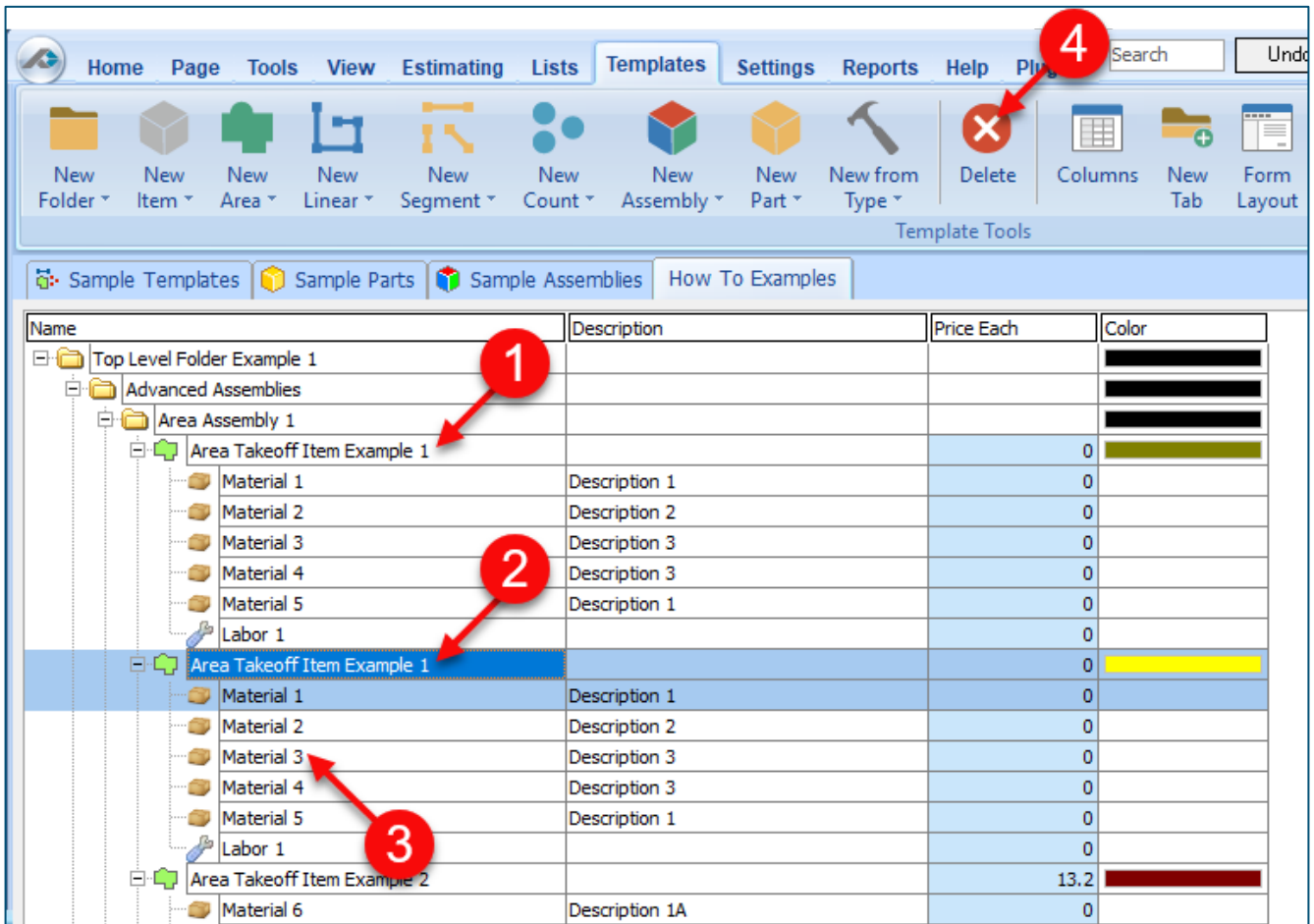


Figure 3

Figure 4 now shows the two assemblies, one with (arrow 1) and one without (arrow 2) the **Material 3** item. You can now change the description of the duplicated **Area Takeoff Item Example 1** (arrow 3) without the **Material 3** item by double-clicking the duplicate **Area Takeoff Item Example 1** (arrow 3).

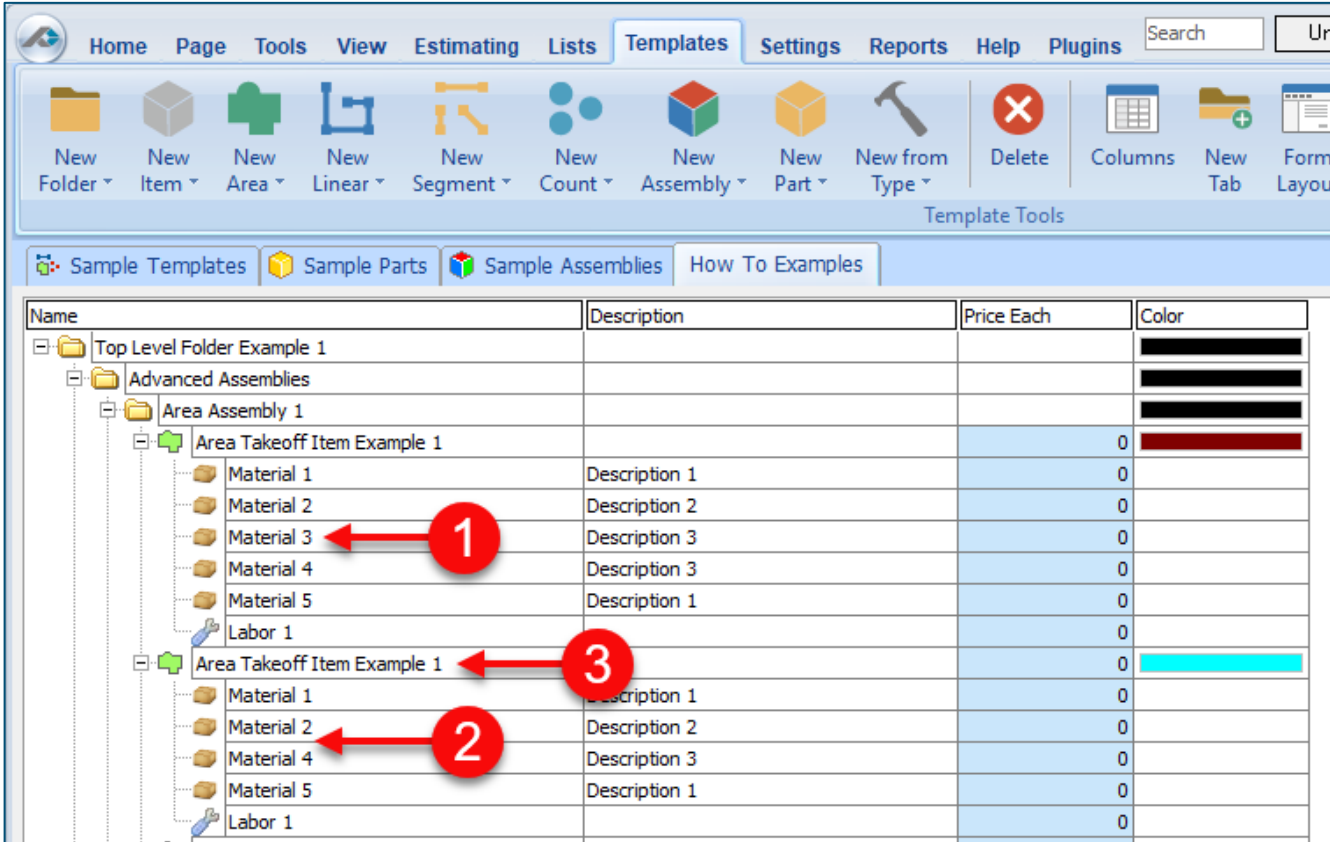


Figure 4

This opens the **Properties – [Area Takeoff Item Example 1]** window (Figure 5) where you can change the assembly’s name to something like **Area Takeoff Item Example 1—No Material 3** to make it easier to identify.

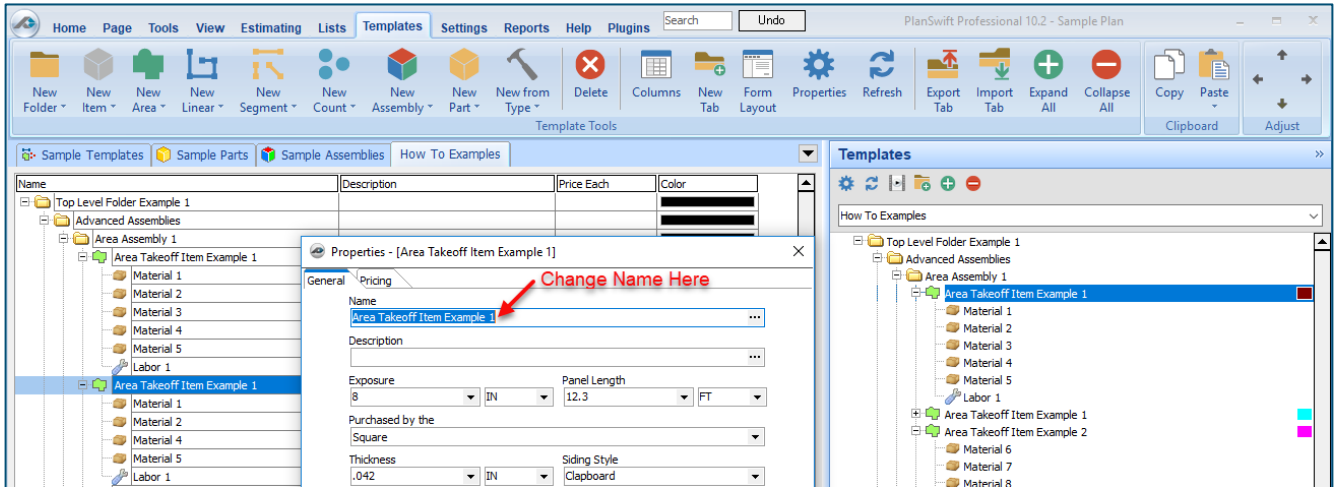


Figure 5

Click on **Ok** in the **Properties** window after you have entered the name. Figure 6 shows the new name.

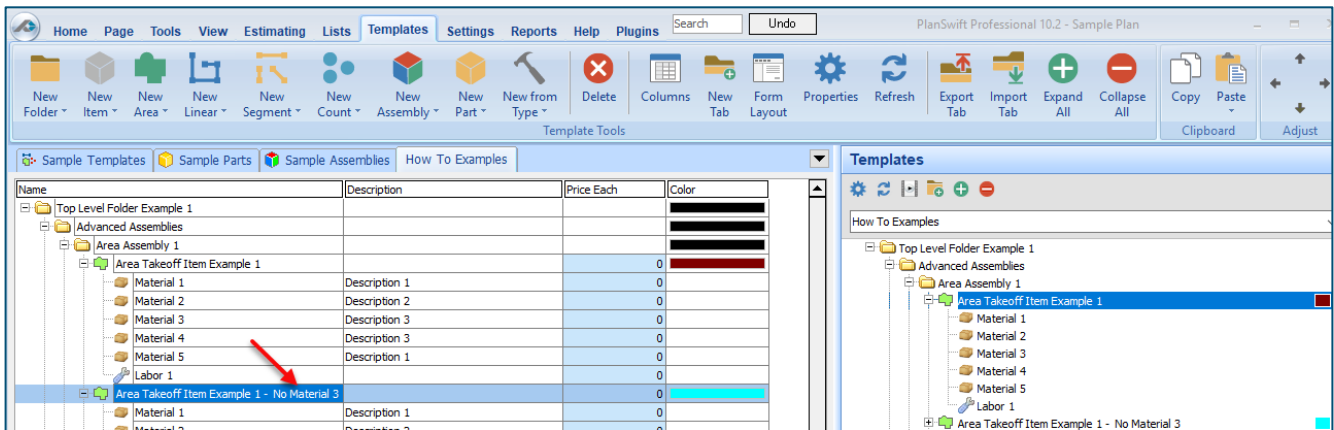


Figure 6

To perform a takeoff with the **Area Takeoff Item Example 1—No Material 3** assembly, go to the takeoff page, click on the green **Record Button** (see the arrow in Figure 7) in the **Templates** sidebar window, and then proceed to do your takeoff.

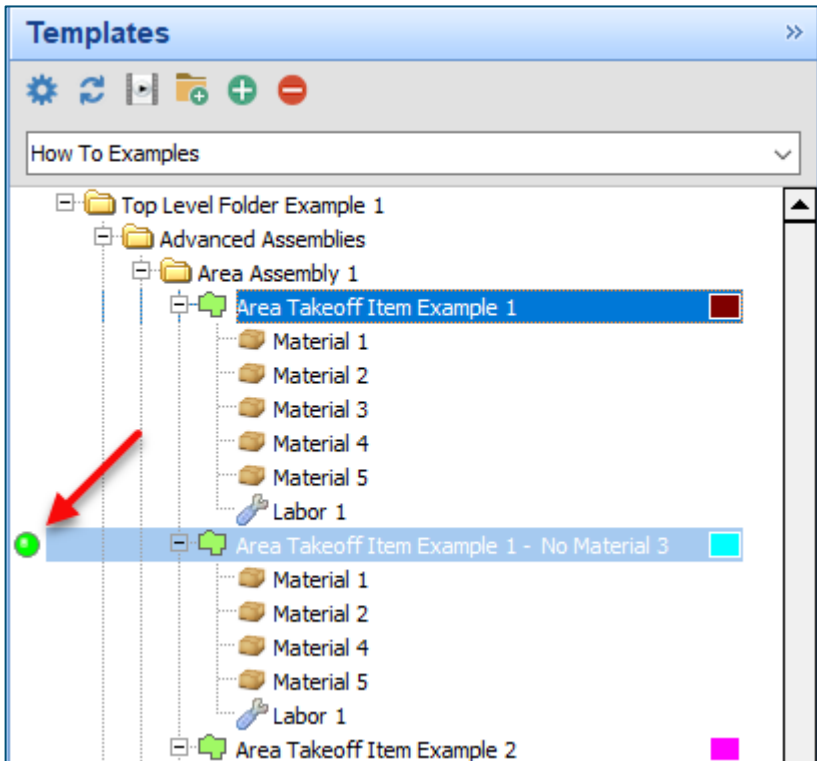


Figure 7

Disclaimer

Any modifications that a user makes to a Starter Pack should always be tested and verified by that user to ensure quantities and calculations are accurate. PlanSwift cannot verify the accuracy of modifications made to templates, parts and assemblies by the user.

How to: Copy and Paste Parts

Copying and pasting parts is handled similarly to copying and pasting an assembly. If, for instance, you want to move **Material 6** in **Area Takeoff Item Example 2** to **Area Takeoff Item Example 1**, click on **Material 6** (arrow 1), then click on copy (arrow 2) as shown in Figure 8.

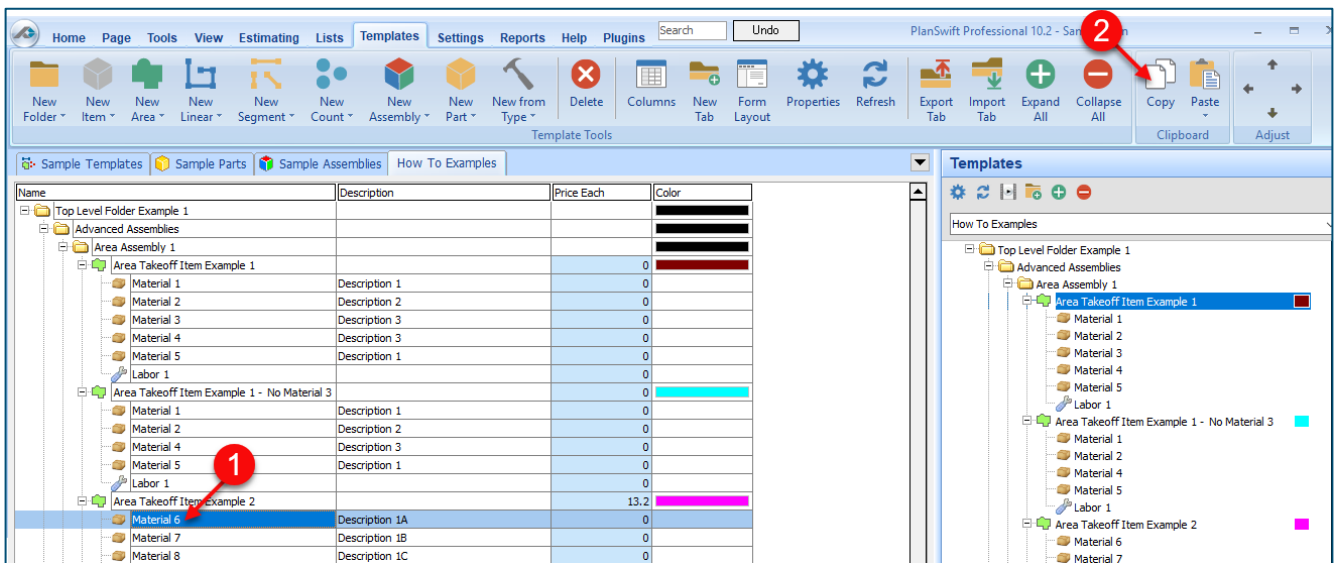


Figure 8

There are now two ways to paste the part. The first is to paste it at the same hierarchical level of a selected item, and the second is to paste it as a sub-item of a selected item. Figure 9 shows the **Paste** button. Clicking on the top half of the button pastes the part at the same hierarchical level of a selected item. Clicking on the drop-down half of the button, then selecting **As Sub-Item** pastes the part as a sub-item of the selected item.

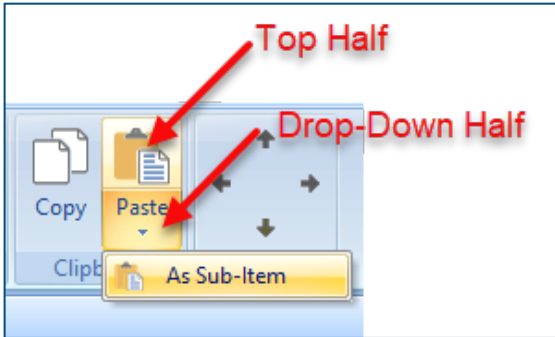


Figure 9

Click on **Area Takeoff Item Example 1**, then click on the top half of **Paste**. As shown in Figure 10, **Material 6** gets pasted at the same hierarchical level as **Area Takeoff Item Example 1**.

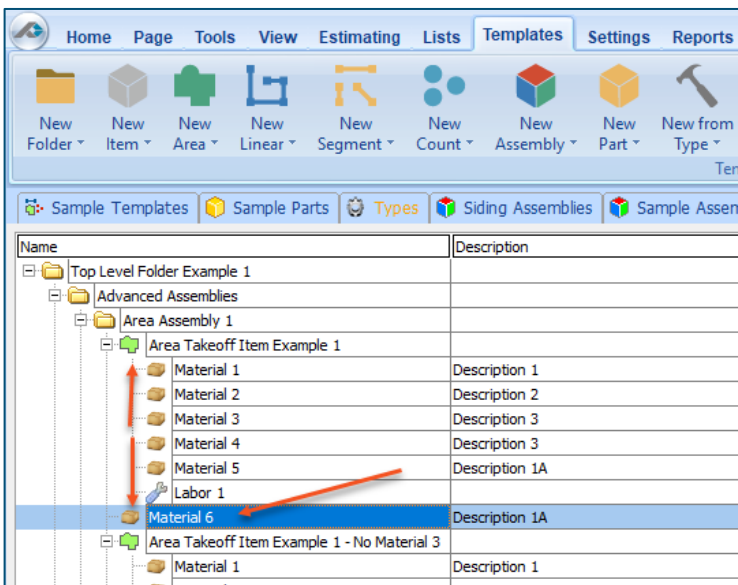


Figure 10

If you had selected the drop-down half of the **Paste** button, then **Material 6** would be a sub-item of **Area Takeoff Item Example 1**. Figure 11 shows **Material 6** as a sub-item.

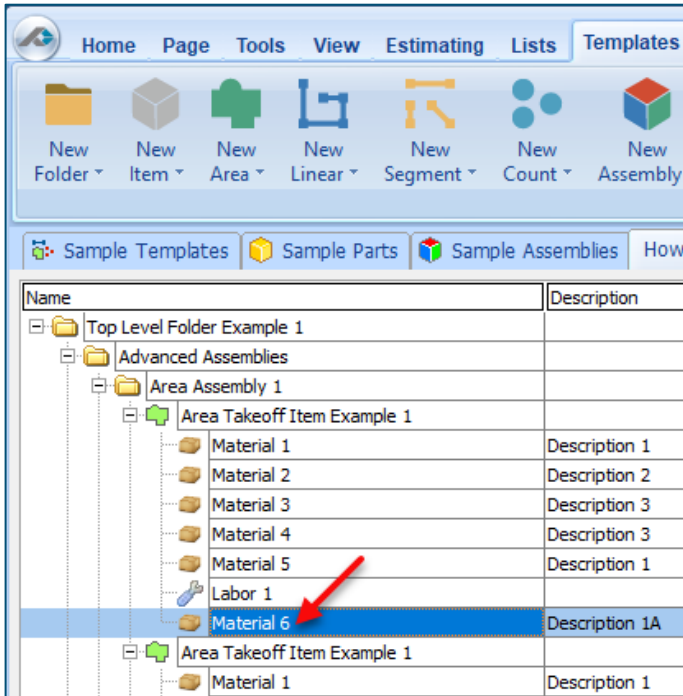


Figure 11

Another way to adjust the hierarchy of an item, such as **Material 6**, is to use the Main Ribbon bar arrow **Adjust** keys (Figure 12).

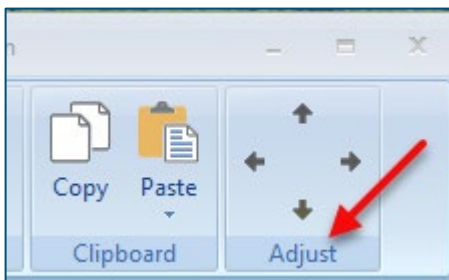


Figure 12

The left and right **Adjust** arrows move the item left and right (up or down) in the hierarchy, and the up and down **Adjust** arrows keys moves the item higher and lower in the list of items.

A shortcut to the **Copy** and **Paste** and **Paste as Sub-Item** selections is available with a right-click menu. Figure 13 shows the **Copy**, **Paste**, and **Paste As Sub-Item** options on the right-click menu when **Material 6** is right-clicked on.

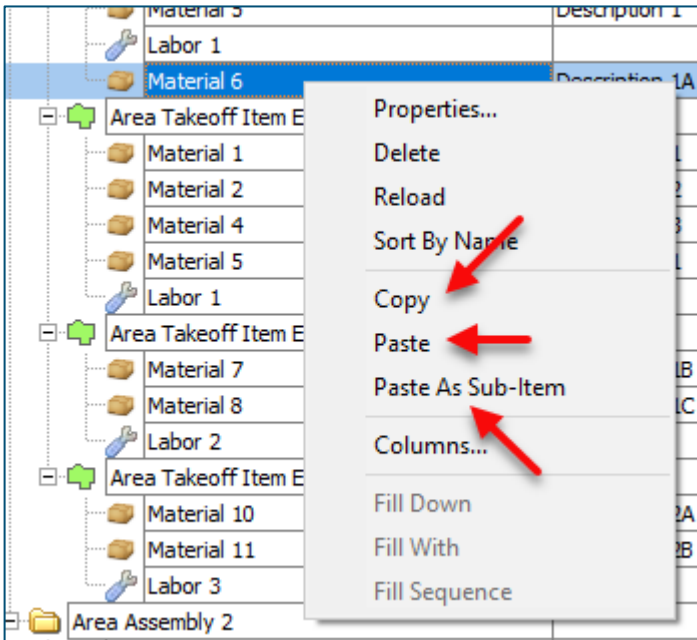


Figure 13

Double-clicking on **Material 6** allows you to change the name of the item and alter other properties of the item (Figure 14). To change the name of **Material 6**, double-click on the **Material 6** name, type the new name, and click on **Ok**.

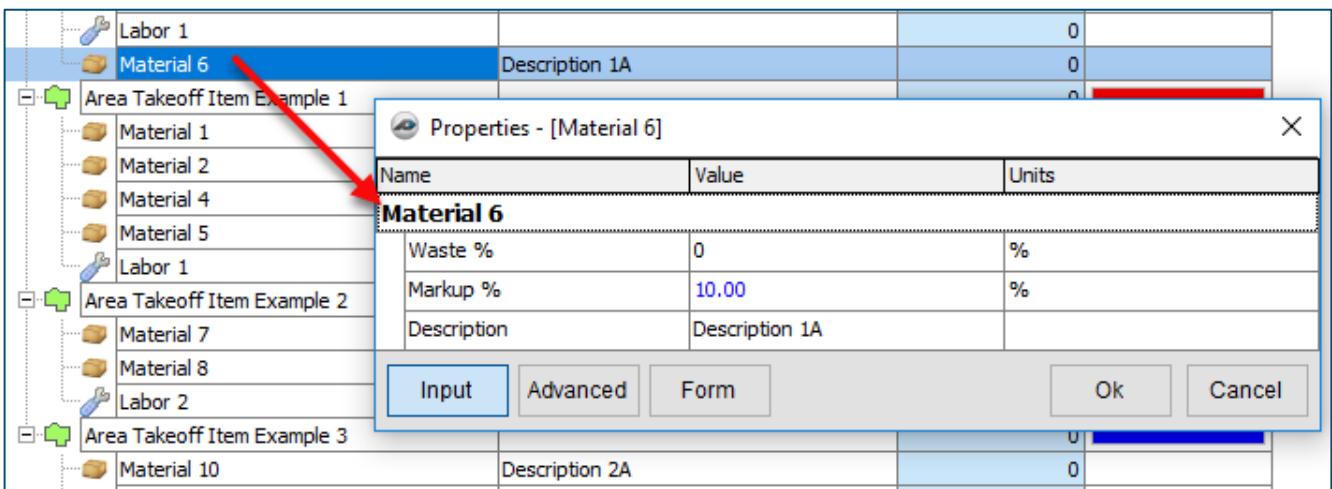
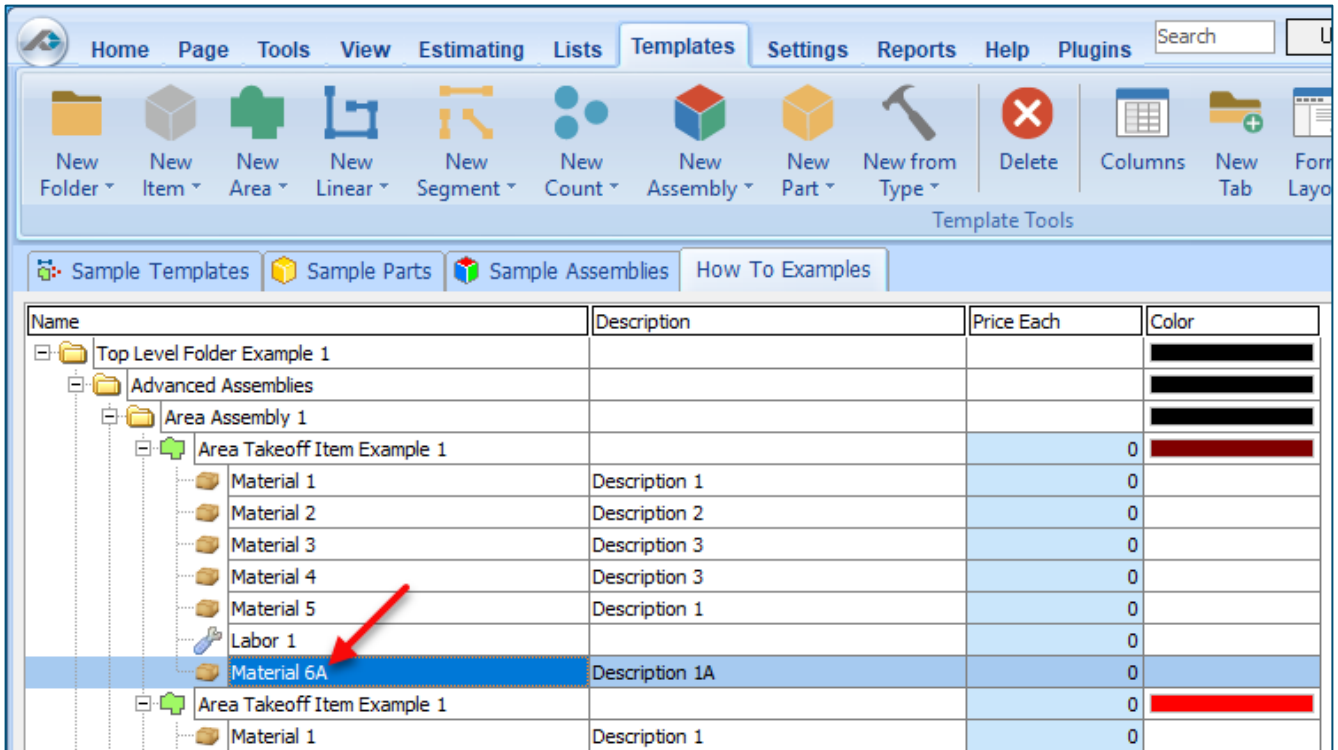


Figure 14

Figure 15 shows **Material 6** renamed to **Material 6A**.



The screenshot shows a software interface with a menu bar (Home, Page, Tools, View, Estimating, Lists, Templates, Settings, Reports, Help, Plugins) and a toolbar with various icons. Below the toolbar is a navigation pane with tabs for 'Sample Templates', 'Sample Parts', 'Sample Assemblies', and 'How To Examples'. The main area displays a table with columns: Name, Description, Price Each, and Color. The table contains a hierarchical tree structure of folders and items. A red arrow points to the row for 'Material 6A'.

Name	Description	Price Each	Color
Top Level Folder Example 1			
Advanced Assemblies			
Area Assembly 1			
Area Takeoff Item Example 1		0	
Material 1	Description 1	0	
Material 2	Description 2	0	
Material 3	Description 3	0	
Material 4	Description 3	0	
Material 5	Description 1	0	
Labor 1		0	
Material 6A	Description 1A	0	
Area Takeoff Item Example 1		0	
Material 1	Description 1	0	

Figure 15

Disclaimer

Any modifications that a user makes to a Starter Pack should always be tested and verified by that user to ensure quantities and calculations are accurate. PlanSwift cannot verify the accuracy of modifications made to templates, parts and assemblies by the user.

How to: Drag and Drop Parts

Parts may be dragged and dropped from one assembly to another assembly. If, for instance, you want to drag the **Material 8** item from **Area Takeoff Item Example 2** up to **Area Takeoff Item Example 1**, click on **Material 8** and drag it up to just below **Material 6A** (see Figure 16) and release the mouse button.

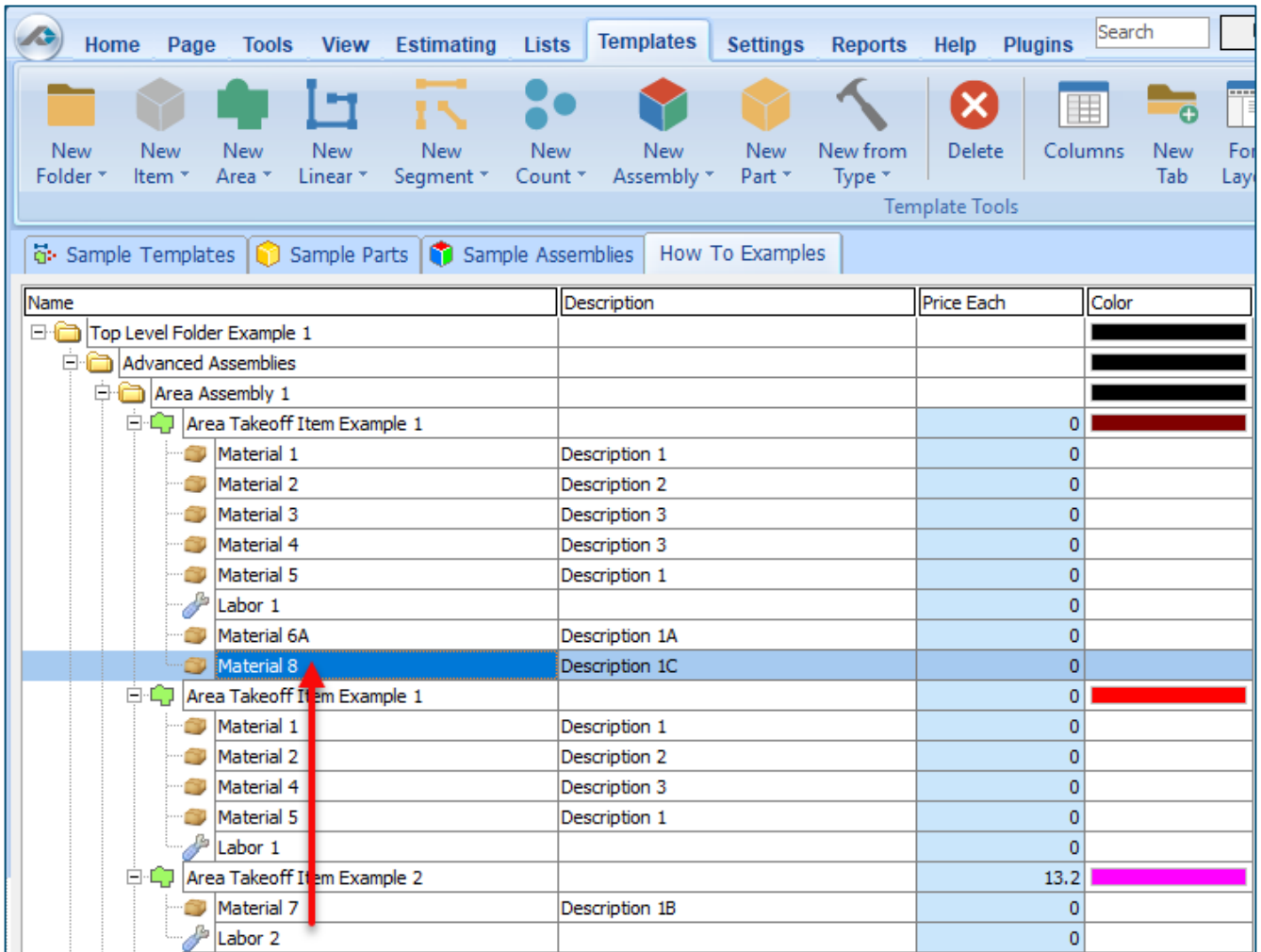


Figure 16

Notice that dragging the part this way *moves* the part from the **Example 2** assembly to the **Example 1** assembly, *not* leaving behind a copy.

The **Templates** sidebar window is a summarized view of everything in the Templates Tab. It is designed for easily dragging and dropping parts and for quickly launching takeoff templates and assemblies.

Parts may be dragged over from the **Templates** sidebar window into the **Templates Tab** window; note that dragging any part from the **Templates** sidebar window makes a copy of it. If, for instance, you want a **Material 7** item added to **Area Takeoff Item Example 1** as a sub-item, simply drag the **Material 7** from the right **Templates** sidebar window over on top of **Area Takeoff Item Example 1** label and release the mouse button. (Figure 17).

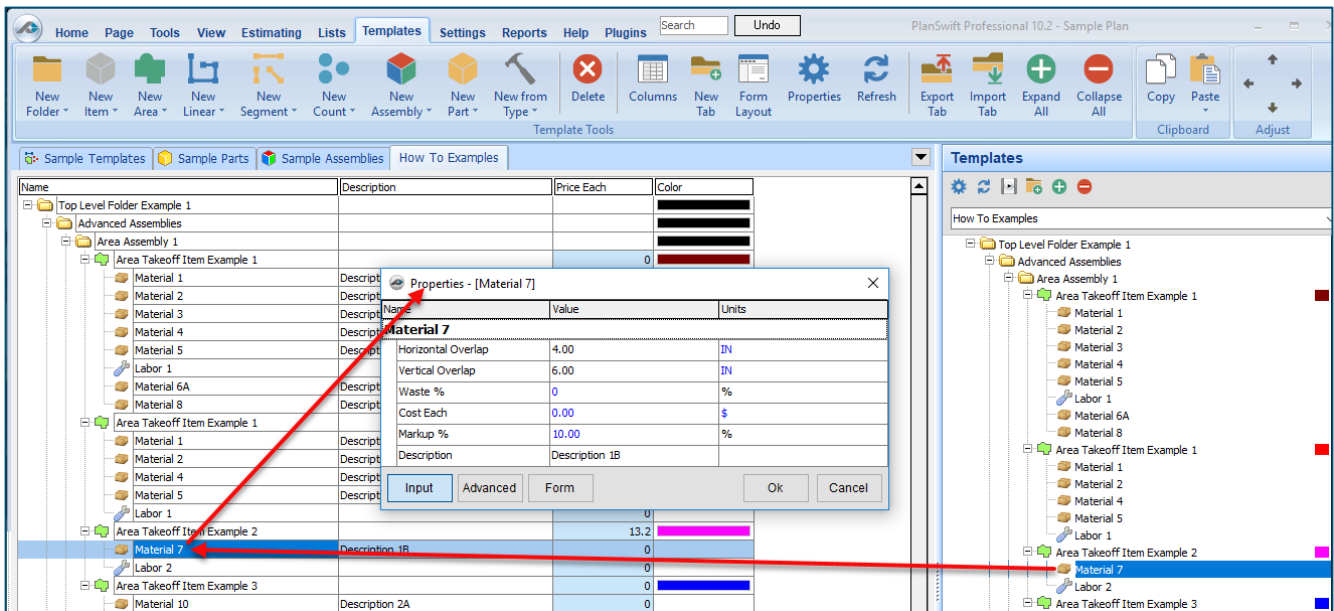


Figure 17

Figure 17 shows the **Material 7** item in place after it was dropped on top of **Area Takeoff Item Example 1**. In addition, the **Properties – [Material 7]** window automatically opens, allowing the user to change any properties for **Material 7**. Click on **Ok** to close the **Properties – [Material 7]** window.

Disclaimer

Any modifications that a user makes to a Starter Pack should always be tested and verified by that user to ensure quantities and calculations are accurate. PlanSwift cannot verify the accuracy of modifications made to templates, parts and assemblies by the user.

FAQ

Question: I've read this user guide, and I still have questions. What do I do?

Answer: PlanSwift recommends that you purchase a training package. We highly recommend new users purchase a training package, because training is customized to each user. We offer [one-on-one training](#) and [classroom training](#). Contact training@PlanSwift.com or at 1-888-752-6794 Ext. 4.

Question: Does the Starter Pack include everything a contractor will need to generate an estimate?

Answer: No. A Starter Pack is a tool to get you started toward creating a complete estimate. For example, the Starter Pack does not include industry pricing for materials and labor. However, you can supply prices for materials and labor on the assemblies and labor included in the Starter Pack.

Question: Do I have to input all the pricing for all my parts?

Answer: Inputting pricing is optional. You can use the Starter Pack to generate quantities that you can then send to your supplier, who can then provide you current pricing. Inputting pricing on your own is optional. If your industry's pricing is not subject to frequent changes, you may want to consider inputting your pricing in PlanSwift.

Compendium

Concrete -- Concrete (Div 3)

Name	Description	Division	Type	Color
Concrete (Div 3)			Folder	■
Concrete Parts (Linear/Segment Takeoffs)			Folder	■
Concrete Priced per CU YD (Linear/Segment Takeoffs)			Folder	■
Continuous Footing	3,500 PSI, 2' wide x 1' deep	3 Concrete	Material	
Grade Beam	3,500 PSI, 2' wide x 3' deep	3 Concrete	Material	
Concrete Wall	3,500 PSI, 8" wide x 10' high	3 Concrete	Material	
Base Courses Priced per TON (Linear/Segment Takeoffs)			Folder	■
Pea Gravel	Pea Gravel - 3500 LBS per CuYd	3 Concrete	Material	
No. 4 Gravel	No. 4 Gravel - 3500 LBS per CuYd	3 Concrete	Material	
Crushed Gravel	Crushed Gravel - 3500 LBS per CuYd	3 Concrete	Material	
Gravel	Gravel - 3500 LBS per CuYd	3 Concrete	Material	
Concrete Parts (Area Takeoffs)			Folder	■
Base Courses Priced per TON (Area Takeoffs)			Folder	■
Pea Gravel	Pea Gravel - 3500 LBS per CuYd	3 Concrete	Material	
No. 4 Gravel	No. 4 Gravel - 3500 LBS per CuYd	3 Concrete	Material	
Crushed Gravel	Crushed Gravel - 3500 LBS per CuYd	3 Concrete	Material	
Gravel	Gravel - 3500 LBS per CuYd	3 Concrete	Material	
Concrete Priced per CU YD (Area Takeoffs)			Folder	■
Slab	Ready Mix 3,500 PSI, 4" Concrete	3 Concrete	Material	
Sidewalk	Ready Mix 3,500 PSI, 4" Concrete	3 Concrete	Material	
Driveway	Ready Mix 3,500 PSI, 4" Concrete	3 Concrete	Material	
Suspended Slab	Ready Mix 3,500 PSI, 4" Concrete	3 Concrete	Material	
Poured Deck	Ready Mix 3,500 PSI, 4" Concrete	3 Concrete	Material	
Pool Deck	Ready Mix 3,500 PSI, 4" Concrete	3 Concrete	Material	
Concrete Toppings/Finishes (Area Takeoffs)			Folder	■
Concrete Topping	300 SQ FT per Bag	3 Concrete	Material	
Concrete Stamping	Priced per SQ FT	3 Concrete	Material	
Concrete Stain	300 SQ FT per GAL	3 Concrete	Material	

Concrete -- Concrete (Div 3) -- Continued

Name	Description	Division	Type	Color
Concrete Parts (Count Takeoffs)			Folder	■
Concrete Priced per CU YD (Count Takeoffs)			Folder	■
Spot Footing	3,500 PSI, 2' W x 2' L x 1' D	3 Concrete	Material	
Round Column	3,500 PSI, 16" Dia x 10' High	3 Concrete	Material	
Concrete Pier	3,500 PSI, 2' W x 2' L x 10' D	3 Concrete	Material	
Accessories Priced Each (Count Takeoffs)			Folder	■
4036 Window Buck	18 gauge galvanized steel	3 Concrete	Material	
5040 Window Buck	18 gauge galvanized steel	3 Concrete	Material	
4040 Window Buck	18 gauge galvanized steel	3 Concrete	Material	
6040 Window Buck	18 gauge galvanized steel	3 Concrete	Material	
2868 Door Buck	18 gauge galvanized steel	3 Concrete	Material	
3070 Door Buck	18 gauge galvanized steel	3 Concrete	Material	
3068 Door Buck	18 gauge galvanized steel	3 Concrete	Material	
Concrete Parts (Manual Qty)			Folder	■
Concrete Tools Priced Each (Manual Qty)			Folder	■
20" Mag Float	Wood handle	3 Concrete	Material	
1"x3"x30" Wood Stakes	50 per bundle	3 Concrete	Material	
2"x2"x6" Hub Stakes	25 per bundle	3 Concrete	Material	
14"x4" Concrete Trowel	Wood handle	3 Concrete	Material	
Concrete Parts (Manual Qty)			Folder	■
Pre-Cast Window Well	4000 PSI	3 Concrete	Material	

Concrete -- Rebar

Name	Description	Division	Type	Color
Rebar/Vapor Barriers (Div 3)			Folder	█
Rebar (Area Takeoffs)			Folder	█
Rebar Priced per LBS (Area Takeoffs)			Folder	█
#2 Rebar	#2 Rebar, 0.167 LBS/FT	3 Concrete	Material	
#4 Rebar	#4 Rebar, 0.668 LBS/FT	3 Concrete	Material	
#3 Rebar	#3 Rebar, 0.376 LBS/FT	3 Concrete	Material	
#5 Rebar	#5 Rebar, 1.043 LBS/FT	3 Concrete	Material	
#6 Rebar	#6 Rebar, 1.502 LBS/FT	3 Concrete	Material	
#7 Rebar	#7 Rebar, 2.044 LBS/FT	3 Concrete	Material	
#8 Rebar	#8 Rebar, 2.67 LBS/FT	3 Concrete	Material	
#9 Rebar	#9 Rebar, 3.4 LBS/FT	3 Concrete	Material	
#10 Rebar	#10 Rebar, 4.303 LBS/FT	3 Concrete	Material	
#11 Rebar	#11 Rebar, 5.313 LBS/FT	3 Concrete	Material	
#14 Rebar	#14 Rebar, 7.65 LBS/FT	3 Concrete	Material	
#18 Rebar	#18 Rebar, 13.6 LBS/FT	3 Concrete	Material	
Rebar Priced per FT (Area Takeoffs)			Folder	█
#2 Rebar	#2 Rebar, 0.167 LBS/FT	3 Concrete	Material	
#3 Rebar	#3 Rebar, 0.376 LBS/FT	3 Concrete	Material	
#4 Rebar	#4 Rebar, 0.668 LBS/FT	3 Concrete	Material	
#5 Rebar	#5 Rebar, 1.043 LBS/FT	3 Concrete	Material	
#6 Rebar	#6 Rebar, 1.502 LBS/FT	3 Concrete	Material	
#7 Rebar	#7 Rebar, 2.044 LBS/FT	3 Concrete	Material	
#8 Rebar	#8 Rebar, 2.67 LBS/FT	3 Concrete	Material	
#9 Rebar	#9 Rebar, 3.4 LBS/FT	3 Concrete	Material	
#10 Rebar	#10 Rebar, 4.303 LBS/FT	3 Concrete	Material	
#11 Rebar	#11 Rebar, 5.313 LBS/FT	3 Concrete	Material	
#14 Rebar	#14 Rebar, 7.65 LBS/FT	3 Concrete	Material	
#18 Rebar	#18 Rebar, 13.6 LBS/FT	3 Concrete	Material	
Rebar Priced per Bar (Area Takeoffs)			Folder	█
#2 Rebar	#2 Rebar, 0.167 LBS/FT	3 Concrete	Material	
#4 Rebar	#4 Rebar, 0.668 LBS/FT	3 Concrete	Material	
#3 Rebar	#3 Rebar, 0.376 LBS/FT	3 Concrete	Material	
#5 Rebar	#5 Rebar, 1.043 LBS/FT	3 Concrete	Material	
#6 Rebar	#6 Rebar, 1.502 LBS/FT	3 Concrete	Material	
#7 Rebar	#7 Rebar, 2.044 LBS/FT	3 Concrete	Material	
#8 Rebar	#8 Rebar, 2.67 LBS/FT	3 Concrete	Material	
#9 Rebar	#9 Rebar, 3.4 LBS/FT	3 Concrete	Material	
#10 Rebar	#10 Rebar, 4.303 LBS/FT	3 Concrete	Material	
#11 Rebar	#11 Rebar, 5.313 LBS/FT	3 Concrete	Material	
#14 Rebar	#14 Rebar, 7.65 LBS/FT	3 Concrete	Material	
#18 Rebar	#18 Rebar, 13.6 LBS/FT	3 Concrete	Material	

Concrete -- Rebar -- Continued

Name	Description	Division	Type	Color
Mesh Priced per Sheet (Area Takeoffs)			Folder	█
2"x2" Welded Wire	7.5' x 20' Sheets, 150 SQ FT approx coverage (with lap)	3 Concrete	Material	
4"x4" Welded Wire	7.5' x 20' Sheets, 150 SQ FT approx coverage (with lap)	3 Concrete	Material	
3"x3" Welded Wire	7.5' x 20' Sheets, 150 SQ FT approx coverage (with lap)	3 Concrete	Material	
6"x6" Welded Wire	7.5' x 20' Sheets, 150 SQ FT approx coverage (with lap)	3 Concrete	Material	
12"x12" Welded Wire	7.5' x 20' Sheets, 150 SQ FT approx coverage (with lap)	3 Concrete	Material	
Barriers Priced per Roll (Area Takeoffs)			Folder	█
15 mil Vapor Barrier	20' x 100' roll, High Performance Polyethylene	3 Concrete	Material	
10 mil Vapor Barrier	20' x 100' roll, High Performance Polyethylene	3 Concrete	Material	
Rebar (Linear/Segment Takeoffs)			Folder	█
Rebar Priced per LBS (Linear/Segment Takeoffs)			Folder	█
Horizontals Priced per LBS			Folder	█
#2 Rebar	#2 Rebar, 0.167 LBS/FT	3 Concrete	Material	
#3 Rebar	#3 Rebar, 0.376 LBS/FT	3 Concrete	Material	
#4 Rebar	#4 Rebar, 0.668 LBS/FT	3 Concrete	Material	
#5 Rebar	#5 Rebar, 1.043 LBS/FT	3 Concrete	Material	
#6 Rebar	#6 Rebar, 1.502 LBS/FT	3 Concrete	Material	
#7 Rebar	#7 Rebar, 2.044 LBS/FT	3 Concrete	Material	
#8 Rebar	#8 Rebar, 2.67 LBS/FT	3 Concrete	Material	
#9 Rebar	#9 Rebar, 3.4 LBS/FT	3 Concrete	Material	
#10 Rebar	#10 Rebar, 4.303 LBS/FT	3 Concrete	Material	
#11 Rebar	#11 Rebar, 5.313 LBS/FT	3 Concrete	Material	
#14 Rebar	#14 Rebar, 7.65 LBS/FT	3 Concrete	Material	
#18 Rebar	#18 Rebar, 13.6 LBS/FT	3 Concrete	Material	
Verticals Priced per LBS			Folder	█
#2 Rebar	#2 Rebar, 0.167 LBS/FT	3 Concrete	Material	
#3 Rebar	#3 Rebar, 0.376 LBS/FT	3 Concrete	Material	
#4 Rebar	#4 Rebar, 0.668 LBS/FT	3 Concrete	Material	
#5 Rebar	#5 Rebar, 1.043 LBS/FT	3 Concrete	Material	
#6 Rebar	#6 Rebar, 1.502 LBS/FT	3 Concrete	Material	
#7 Rebar	#7 Rebar, 2.044 LBS/FT	3 Concrete	Material	
#8 Rebar	#8 Rebar, 2.67 LBS/FT	3 Concrete	Material	
#9 Rebar	#9 Rebar, 3.4 LBS/FT	3 Concrete	Material	
#10 Rebar	#10 Rebar, 4.303 LBS/FT	3 Concrete	Material	
#11 Rebar	#11 Rebar, 5.313 LBS/FT	3 Concrete	Material	
#14 Rebar	#14 Rebar, 7.65 LBS/FT	3 Concrete	Material	
#18 Rebar	#18 Rebar, 13.6 LBS/FT	3 Concrete	Material	

Concrete -- Rebar -- Continued

Name	Description	Division	Type	Color
Rebar Priced per Bar (Linear/Segment Takeoffs)			Folder	■
Horizontals Priced per Bar			Folder	■
#2 Rebar	#2 Rebar, 0.167 LBS/FT	3 Concrete	Material	
#4 Rebar	#4 Rebar, 0.668 LBS/FT	3 Concrete	Material	
#3 Rebar	#3 Rebar, 0.376 LBS/FT	3 Concrete	Material	
#5 Rebar	#5 Rebar, 1.043 LBS/FT	3 Concrete	Material	
#6 Rebar	#6 Rebar, 1.502 LBS/FT	3 Concrete	Material	
#7 Rebar	#7 Rebar, 2.044 LBS/FT	3 Concrete	Material	
#8 Rebar	#8 Rebar, 2.67 LBS/FT	3 Concrete	Material	
#9 Rebar	#9 Rebar, 3.4 LBS/FT	3 Concrete	Material	
#10 Rebar	#10 Rebar, 4.303 LBS/FT	3 Concrete	Material	
#11 Rebar	#11 Rebar, 5.313 LBS/FT	3 Concrete	Material	
#14 Rebar	#14 Rebar, 7.65 LBS/FT	3 Concrete	Material	
#18 Rebar	#18 Rebar, 13.6 LBS/FT	3 Concrete	Material	
Verticals Priced per Bar			Folder	■
#2 Rebar	#2 Rebar, 0.167 LBS/FT	3 Concrete	Material	
#3 Rebar	#3 Rebar, 0.376 LBS/FT	3 Concrete	Material	
#4 Rebar	#4 Rebar, 0.668 LBS/FT	3 Concrete	Material	
#5 Rebar	#5 Rebar, 1.043 LBS/FT	3 Concrete	Material	
#6 Rebar	#6 Rebar, 1.502 LBS/FT	3 Concrete	Material	
#7 Rebar	#7 Rebar, 2.044 LBS/FT	3 Concrete	Material	
#8 Rebar	#8 Rebar, 2.67 LBS/FT	3 Concrete	Material	
#9 Rebar	#9 Rebar, 3.4 LBS/FT	3 Concrete	Material	
#10 Rebar	#10 Rebar, 4.303 LBS/FT	3 Concrete	Material	
#11 Rebar	#11 Rebar, 5.313 LBS/FT	3 Concrete	Material	
#14 Rebar	#14 Rebar, 7.65 LBS/FT	3 Concrete	Material	
#18 Rebar	#18 Rebar, 13.6 LBS/FT	3 Concrete	Material	

Concrete -- Rebar -- Continued

Name	Description	Division	Type	Color
Rebar Priced per FT (Linear/Segment Takeoffs)			Folder	■
Horizontals Priced per FT			Folder	■
#2 Rebar	#2 Rebar, 0.167 LBS/FT	3 Concrete	Material	
#3 Rebar	#3 Rebar, 0.376 LBS/FT	3 Concrete	Material	
#4 Rebar	#4 Rebar, 0.668 LBS/FT	3 Concrete	Material	
#5 Rebar	#5 Rebar, 1.043 LBS/FT	3 Concrete	Material	
#6 Rebar	#6 Rebar, 1.502 LBS/FT	3 Concrete	Material	
#7 Rebar	#7 Rebar, 2.044 LBS/FT	3 Concrete	Material	
#8 Rebar	#8 Rebar, 2.67 LBS/FT	3 Concrete	Material	
#9 Rebar	#9 Rebar, 3.4 LBS/FT	3 Concrete	Material	
#10 Rebar	#10 Rebar, 4.303 LBS/FT	3 Concrete	Material	
#11 Rebar	#11 Rebar, 5.313 LBS/FT	3 Concrete	Material	
#14 Rebar	#14 Rebar, 7.65 LBS/FT	3 Concrete	Material	
#18 Rebar	#18 Rebar, 13.6 LBS/FT	3 Concrete	Material	
Verticals Priced per FT			Folder	■
#2 Rebar	#2 Rebar, 0.167 LBS/FT	3 Concrete	Material	
#3 Rebar	#3 Rebar, 0.376 LBS/FT	3 Concrete	Material	
#4 Rebar	#4 Rebar, 0.668 LBS/FT	3 Concrete	Material	
#5 Rebar	#5 Rebar, 1.043 LBS/FT	3 Concrete	Material	
#6 Rebar	#6 Rebar, 1.502 LBS/FT	3 Concrete	Material	
#7 Rebar	#7 Rebar, 2.044 LBS/FT	3 Concrete	Material	
#8 Rebar	#8 Rebar, 2.67 LBS/FT	3 Concrete	Material	
#9 Rebar	#9 Rebar, 3.4 LBS/FT	3 Concrete	Material	
#10 Rebar	#10 Rebar, 4.303 LBS/FT	3 Concrete	Material	
#11 Rebar	#11 Rebar, 5.313 LBS/FT	3 Concrete	Material	
#14 Rebar	#14 Rebar, 7.65 LBS/FT	3 Concrete	Material	
#18 Rebar	#18 Rebar, 13.6 LBS/FT	3 Concrete	Material	
Other Parts (Linear/Segment Takeoffs)			Folder	■
5/8" Anchor Bolts (priced EA)	30" OC	3 Concrete	Material	
15 mil Vapor Barrier (priced per Roll)	20' x 100' roll, High Performance Polyethylene	3 Concrete	Material	
Vapor Tape (priced per Roll)	4" x 180' roll, High Performance Polyethylene	3 Concrete	Material	
10 mil Vapor Barrier (priced per Roll)	20' x 100' roll, High Performance Polyethylene	3 Concrete	Material	

Concrete -- Rebar -- Continued

Name	Description	Division	Type	Color
Rebar (Count Takeoffs)			Folder	■
Rebar Priced per Bar (Count Takeoffs)			Folder	■
#2 Rebar	#2 Rebar, 0.167 LBS/FT	3 Concrete	Material	
#3 Rebar	#3 Rebar, 0.376 LBS/FT	3 Concrete	Material	
#4 Rebar	#4 Rebar, 0.668 LBS/FT	3 Concrete	Material	
#5 Rebar	#5 Rebar, 1.043 LBS/FT	3 Concrete	Material	
#6 Rebar	#6 Rebar, 1.502 LBS/FT	3 Concrete	Material	
#7 Rebar	#7 Rebar, 2.044 LBS/FT	3 Concrete	Material	
#8 Rebar	#8 Rebar, 2.67 LBS/FT	3 Concrete	Material	
#9 Rebar	#9 Rebar, 3.4 LBS/FT	3 Concrete	Material	
#10 Rebar	#10 Rebar, 4.303 LBS/FT	3 Concrete	Material	
#11 Rebar	#11 Rebar, 5.313 LBS/FT	3 Concrete	Material	
#14 Rebar	#14 Rebar, 7.65 LBS/FT	3 Concrete	Material	
#18 Rebar	#18 Rebar, 13.6 LBS/FT	3 Concrete	Material	
Rebar Priced per LBS (Count Takeoffs)			Folder	■
#2 Rebar	#2 Rebar, 0.167 LBS/FT	3 Concrete	Material	
#3 Rebar	#3 Rebar, 0.376 LBS/FT	3 Concrete	Material	
#4 Rebar	#4 Rebar, 0.668 LBS/FT	3 Concrete	Material	
#5 Rebar	#5 Rebar, 1.043 LBS/FT	3 Concrete	Material	
#6 Rebar	#6 Rebar, 1.502 LBS/FT	3 Concrete	Material	
#7 Rebar	#7 Rebar, 2.044 LBS/FT	3 Concrete	Material	
#8 Rebar	#8 Rebar, 2.67 LBS/FT	3 Concrete	Material	
#9 Rebar	#9 Rebar, 3.4 LBS/FT	3 Concrete	Material	
#10 Rebar	#10 Rebar, 4.303 LBS/FT	3 Concrete	Material	
#11 Rebar	#11 Rebar, 5.313 LBS/FT	3 Concrete	Material	
#14 Rebar	#14 Rebar, 7.65 LBS/FT	3 Concrete	Material	
#18 Rebar	#18 Rebar, 13.6 LBS/FT	3 Concrete	Material	
Rebar Priced Per FT (Count Takeoffs)			Folder	■
#2 Rebar	#2 Rebar, 0.167 LBS/FT	3 Concrete	Material	
#3 Rebar	#3 Rebar, 0.376 LBS/FT	3 Concrete	Material	
#4 Rebar	#4 Rebar, 0.668 LBS/FT	3 Concrete	Material	
#5 Rebar	#5 Rebar, 1.043 LBS/FT	3 Concrete	Material	
#6 Rebar	#6 Rebar, 1.502 LBS/FT	3 Concrete	Material	
#7 Rebar	#7 Rebar, 2.044 LBS/FT	3 Concrete	Material	
#8 Rebar	#8 Rebar, 2.67 LBS/FT	3 Concrete	Material	
#9 Rebar	#9 Rebar, 3.4 LBS/FT	3 Concrete	Material	
#10 Rebar	#10 Rebar, 4.303 LBS/FT	3 Concrete	Material	
#11 Rebar	#11 Rebar, 5.313 LBS/FT	3 Concrete	Material	
#14 Rebar	#14 Rebar, 7.65 LBS/FT	3 Concrete	Material	
#18 Rebar	#18 Rebar, 13.6 LBS/FT	3 Concrete	Material	
Reinforcement Parts (Manual Qty)			Folder	■
15 mil Vapor Barrier (priced per Roll)	20' x 100' roll, High Performance Polyethylene	3 Concrete	Material	
Vapor Tape (priced per Roll)	4" x 180' roll, High Performance Polyethylene	3 Concrete	Material	
4"x4" Rebar Caps w/metal insert	50 per box	3 Concrete	Material	
2-1/2" Rebar Chairs (plastic dipped)	300 per box	3 Concrete	Material	
Reinforcement Parts (Inherit Qty From Parent)			Folder	■
Rebar per EACH unit (priced per LBS)	#4 Rebar, 0.668 LBS/FT	3 Concrete	Material	

Concrete -- Example Assemblies

Name	Description	Division	Type	Color
Reinforcement Parts (Inherit Qty From Parent)			Folder	
Rebar per EACH unit (priced per LBS)	#4 Rebar, 0.668 LBS/FT	3 Concrete	Material	
Example Assemblies			Folder	
Linear Assemblies			Folder	
Concrete Footing			Linear	
#4 Rebar	#4 Rebar, 0.668 LBS/FT	3 Concrete	Material	
Gravel	Gravel - 3500 LBS per CuYd	3 Concrete	Material	
Continuous Footing	3,500 PSI, 3' wide x 2' deep	3 Concrete	Material	
Area Assemblies			Folder	
Slab			Area	
Slab	Ready Mix 3,500 PSI, 4" Concrete	3 Concrete	Material	
Pea Gravel	Pea Gravel - 3500 LBS per CuYd	3 Concrete	Material	
4"x4" Welded Wire	7.5' x 20' Sheets, 150 SQ FT approx coverage (with lap)	3 Concrete	Material	
Slab with Grid Tool			Grid Tool	
Slab	Ready Mix 3,500 PSI, 4" Concrete	3 Concrete	Material	
Pea Gravel	Pea Gravel - 3500 LBS per CuYd	3 Concrete	Material	
#4 Rebar	#4 Rebar, 0.668 LBS/FT	3 Concrete	Material	
Segment Assemblies			Folder	
Footing			Segment	
#4 Rebar	#4 Rebar, 0.668 LBS/FT	3 Concrete	Material	
Gravel	Gravel - 3500 LBS per CuYd	3 Concrete	Material	
Continuous Footing	3,500 PSI, 0' wide x 0' deep	3 Concrete	Material	
Count Assemblies			Folder	
Spot Footing			Count	
Spot Footing	3,500 PSI, 2' W x 2' L x 1' D	3 Concrete	Material	
#4 Rebar	#4 Rebar, 0.668 LBS/FT	3 Concrete	Material	