

Masonry

Starter Pack

User Guide

UPDATED ON 11/21/2018

PlanSwift

Authored by: Dave Hansen



Table of Contents

Overview	3
Purchasing and Installation	4
Purchasing Plugins.....	4
Installation and Uninstallation	4
Features.....	4
How To	5
How to: Copy and Paste an Assembly.....	5
How to: Copy and Paste Parts.....	10
How to: Drag and Drop Parts	15
FAQ.....	17
Compendium.....	18
Masonry Assemblies – Block.....	18
Masonry Assemblies – Stone	23
Masonry Parts – Block.....	26
Masonry Parts – Brick	27
Masonry Parts – Stone	28
Masonry Parts – Lump Sum Parts	28

Overview

This guide will teach you how to properly use the tools and features found within the Masonry Starter Pack. It is designed for use with PlanSwift® Takeoff and Estimating Software. This guide is not meant to be a step-by-step “walk through” document, although it can be used as a reference for getting the work done. If you encounter technical difficulty, consult this guide (including the [FAQ](#) section of this user manual) or contact the technical support department at:

PlanSwift® Technical Support
support@PlanSwift.com
1-888-752-6794 ext. 2

PlanSwift also offers additional training. For training options, contact the training department at:

PlanSwift® Training Department
training@PlanSwift.com
1-888-752-6794 ext. 4

Purchasing and Installation

Purchasing Plugins

If you need to purchase PlanSwift or a plugin product, contact the sales department at:

PlanSwift® Sales
sales@PlanSwift.com
1-888-752-6794 ext. 1

Installation and Uninstallation

Installing and uninstalling starter packs is simple. For installing them, click on the Import Plugin Package icon (arrow 1 in Figure 1) from the PlanSwift Main Ribbon-bar **Plugin** tab (arrow 3 of Figure 1) and follow the prompts from there. For uninstalling, click on the Uninstall Plugin (arrow 2 in Figure 1) and follow those prompts.

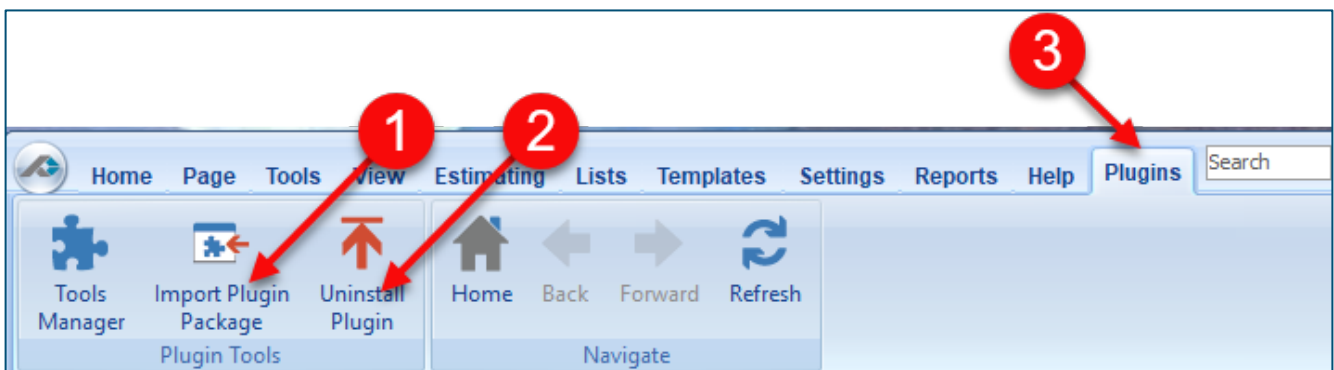


Figure 1

Features

The Masonry Starter Pack includes [Masonry Assemblies](#) and [Masonry Parts](#) found in the Templates tab of PlanSwift. These are listed in the [Compendium](#) at the end of this guide. With these Masonry assemblies and parts, PlanSwift users can easily customize assemblies and parts for later use. Starter Packs contain a large library of prebuilt templates, parts and assemblies. Modifying the library of parts and assemblies for any Starter Pack allows users the ability to customize their Templates to their specific

needs. Users will save countless hours of setup by utilizing a Starter Pack as their starting point for building custom parts and assemblies. The instructions below will guide new users through the basics of modifying parts and assemblies. We highly recommend purchasing a training package for accelerated learning and faster customization.

How To

How to: Copy and Paste an Assembly

The purpose of copying and pasting an assembly is to allow the user to copy and then modify the assembly for later use. As an example, you may want two different assemblies: one might include a part, and another might have an alternative part or not include that part at all. By copying one assembly and then modifying and renaming the copy (for easy identification), you can have two different assemblies available, allowing for easier and faster takeoffs. Figure 2 shows the **Templates Tab** (arrow 1) and the **Area Takeoff Item Example 1** assembly (arrow 2). If you want to add another assembly but with no **Material 3**, then you would click on the assembly you want to copy (arrow 2), click on **Copy** (arrow 3), and then click on **Paste** (arrow 4).

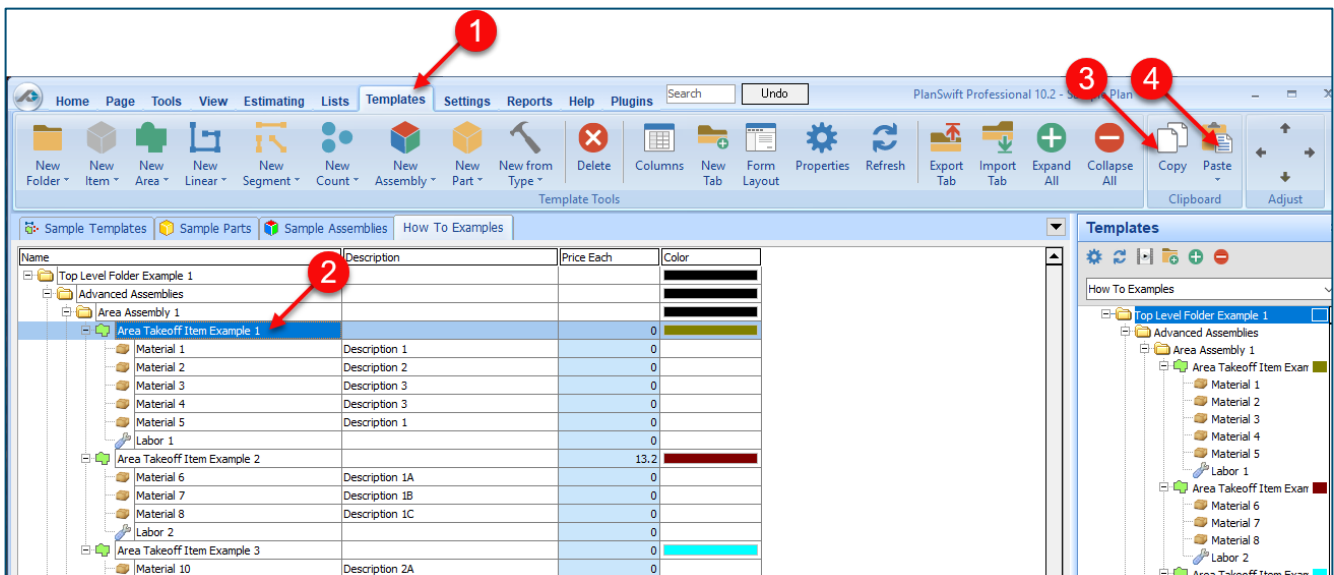


Figure 2

Figure 3 shows the original (arrows 1) and new **Area Takeoff Item Example 1** assembly (arrow 2). To delete the **Material 3** (arrow 3) from the newly created **Area Takeoff Item Example 1** assembly (arrow 2), click on **Material 3** (arrow 3), click on **Delete** (arrow 4), and click on **OK** in the popup window to confirm the deletion.

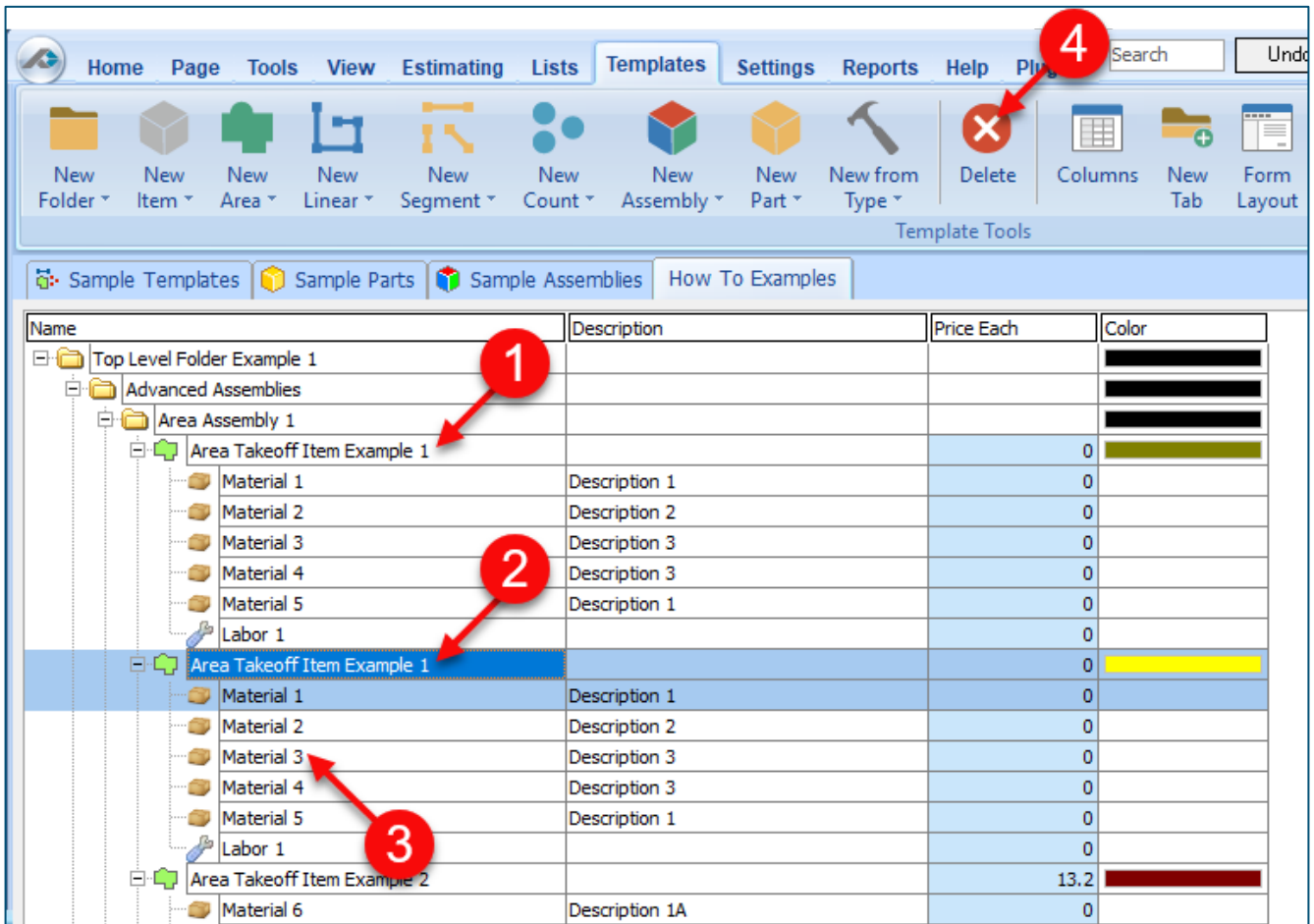


Figure 3

Figure 4 now shows the two assemblies, one with (arrow 1) and one without (arrow 2) the **Material 3** item. You can now change the description of the duplicated **Area Takeoff Item Example 1** (arrow 3) without the **Material 3** item by double-clicking the duplicate **Area Takeoff Item Example 1** (arrow 3).

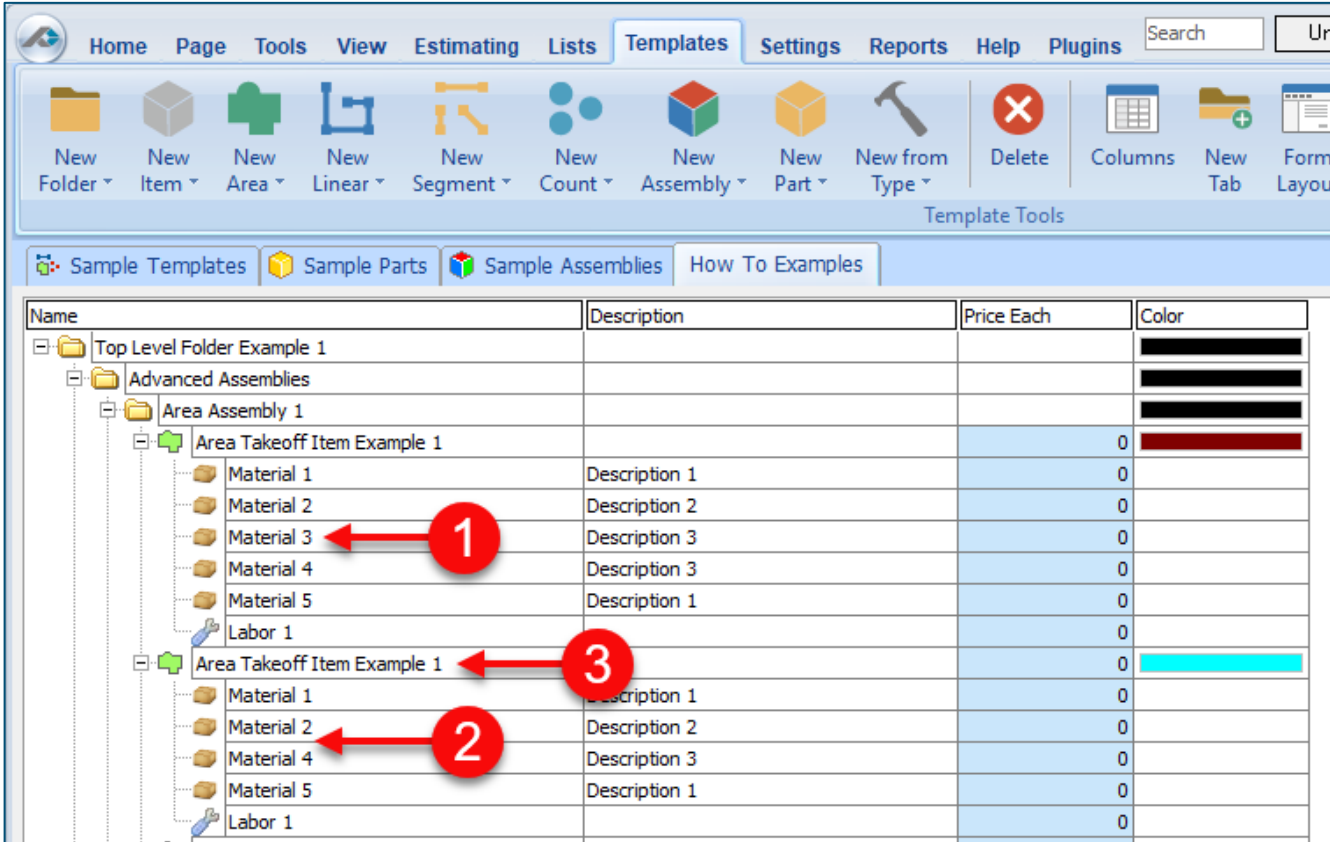


Figure 4

This opens the **Properties – [Area Takeoff Item Example 1]** window (Figure 5) where you can change the assembly’s name to something like **Area Takeoff Item Example 1—No Material 3** to make it easier to identify.

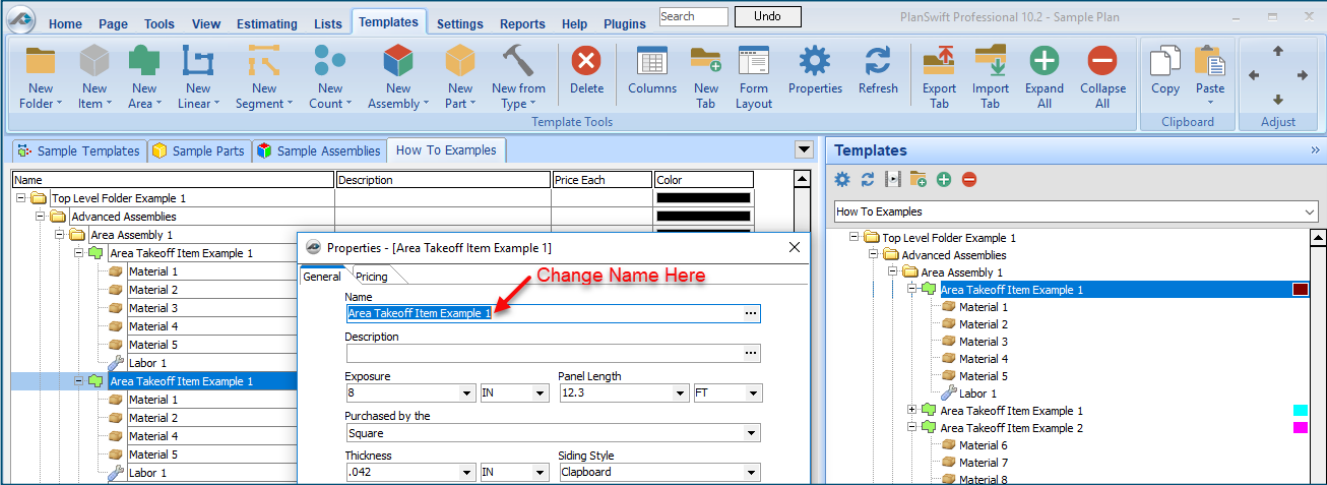


Figure 5

Click on **Ok** in the **Properties** window after you have entered the name. Figure 6 shows the new name.

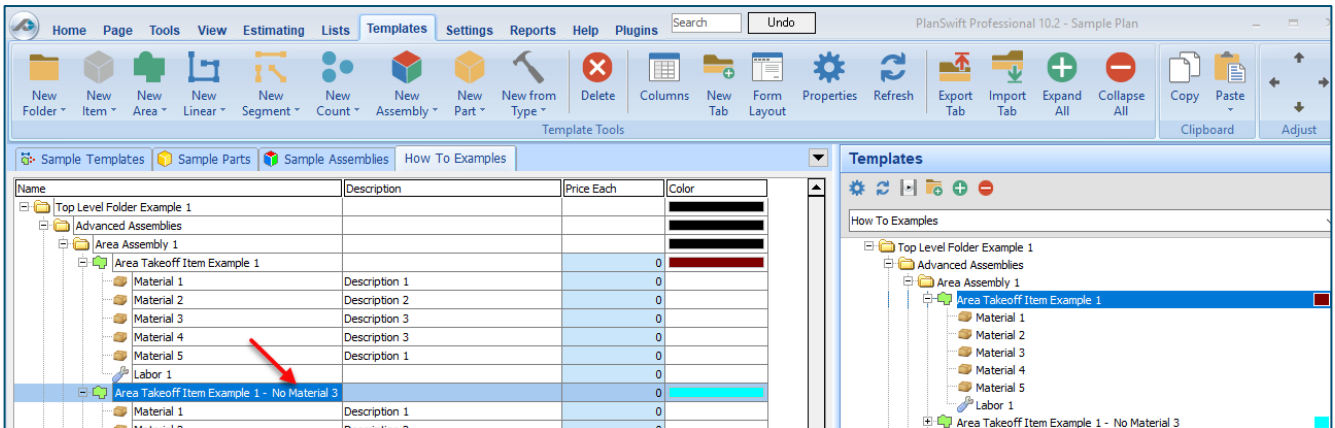


Figure 6

To perform a takeoff with the **Area Takeoff Item Example 1—No Material 3** assembly, go to the takeoff page, click on the green **Record Button** (see the arrow in Figure 7) in the **Templates** sidebar window, and then proceed to do your takeoff.

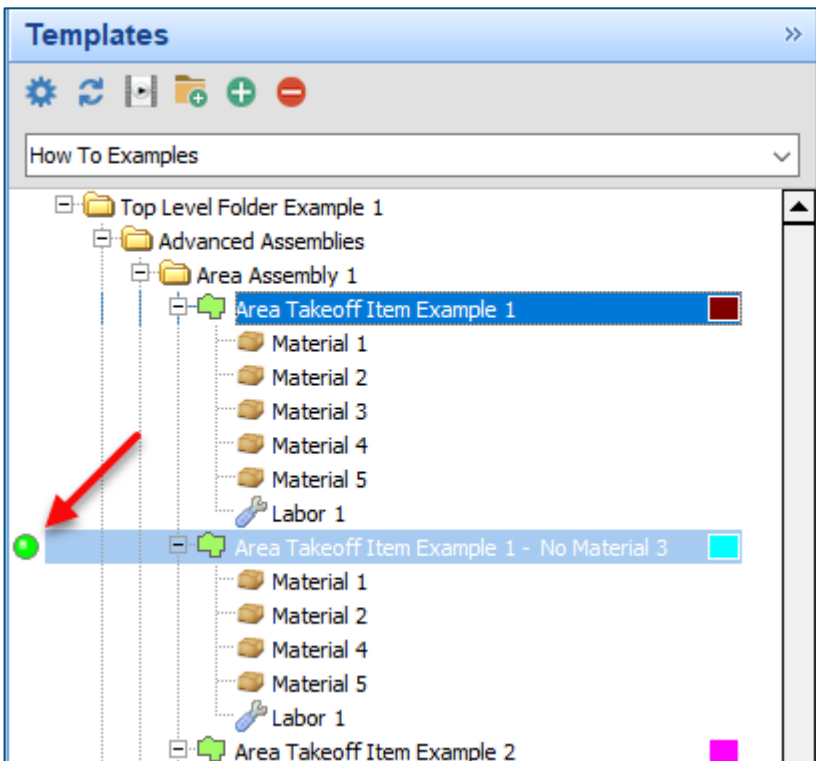


Figure 7

Disclaimer

Any modifications that a user makes to a Starter Pack should always be tested and verified by that user to ensure quantities and calculations are accurate. PlanSwift cannot verify the accuracy of modifications made to templates, parts and assemblies by the user.

How to: Copy and Paste Parts

Copying and pasting parts is handled similarly to copying and pasting an assembly. If, for instance, you want to move **Material 6** in **Area Takeoff Item Example 2** to **Area Takeoff Item Example 1**, click on **Material 6** (arrow 1), then click on copy (arrow 2) as shown in Figure 8.

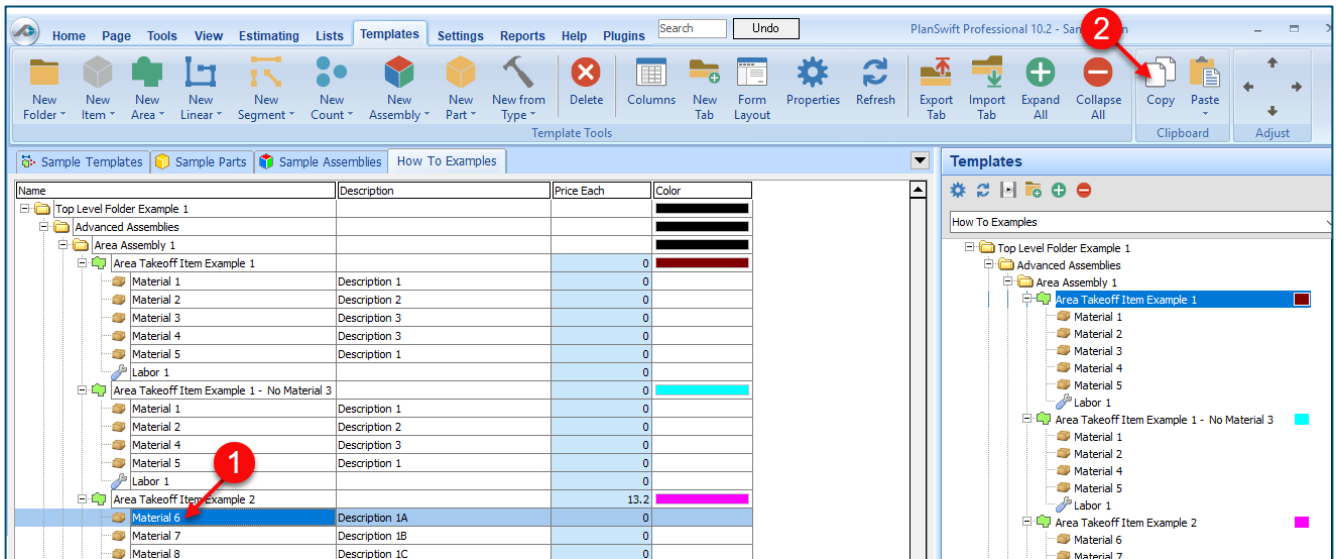


Figure 8

There are now two ways to paste the part. The first is to paste it at the same hierarchical level of a selected item, and the second is to paste it as a sub-item of a selected item. Figure 9 shows the **Paste** button. Clicking on the top half of the button pastes the part at the same hierarchical level of a selected item. Clicking on the drop-down half of the button, then selecting **As Sub-Item** pastes the part as a sub-item of the selected item.

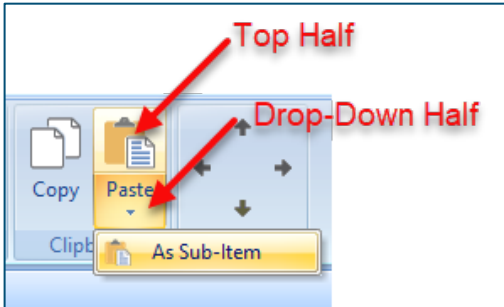


Figure 9

Click on **Area Takeoff Item Example 1**, then click on the top half of **Paste**. As shown in Figure 10, **Material 6** gets pasted at the same hierarchical level as **Area Takeoff Item Example 1**.

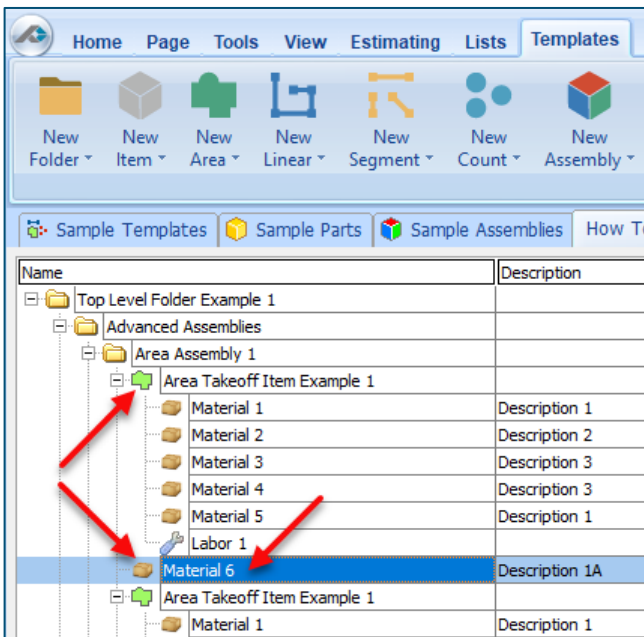


Figure 10

If you had selected the drop-down half of the **Paste** button, then **Material 6** would be a sub-item of **Area Takeoff Item Example 1**. Figure 11 shows **Material 6** as a sub-item.

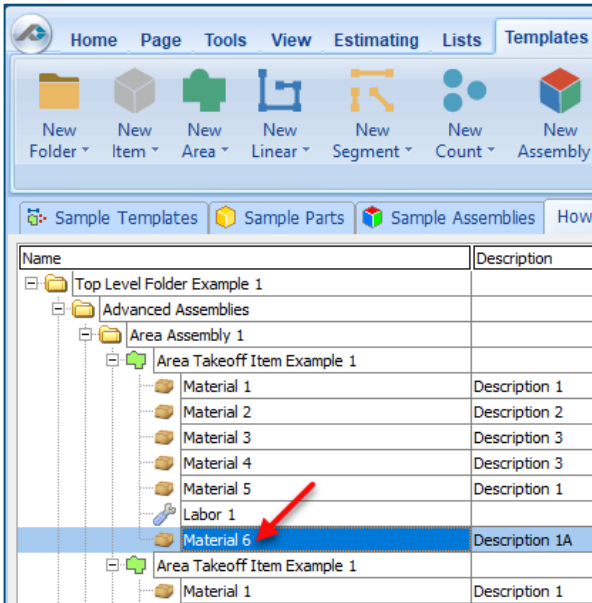


Figure 11

Another way to adjust the hierarchy of an item, such as **Material 6**, is to use the Main Ribbon bar arrow **Adjust** keys (Figure 12).

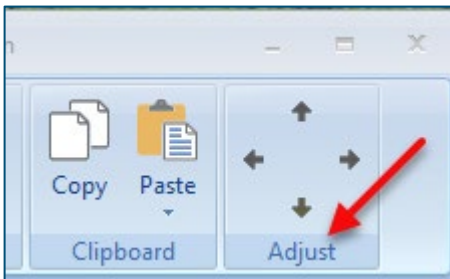


Figure 12

The left and right **Adjust** arrows move the item left and right (up or down) in the hierarchy, and the up and down **Adjust** arrows keys moves the item higher and lower in the list of items.

A shortcut to the **Copy** and **Paste** and **Paste as Sub-Item** selections is available with a right-click menu. Figure 13 shows the **Copy**, **Paste**, and **Paste As Sub-Item** options on the right-click menu when **Material 6** is right-clicked on.

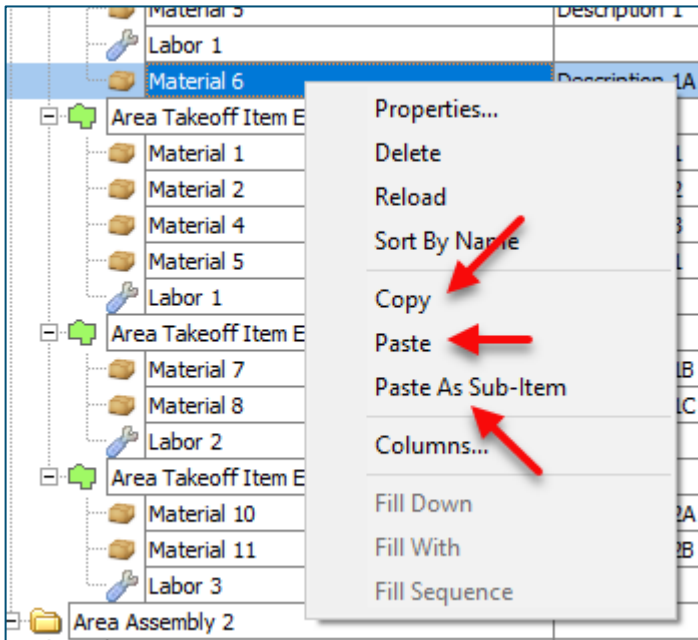


Figure 13

Double-clicking on **Material 6** allows you to change the name of the item and alter other properties of the item (Figure 14). To change the name of **Material 6**, double-click on the **Material 6** name, type the new name, and click on **Ok**.

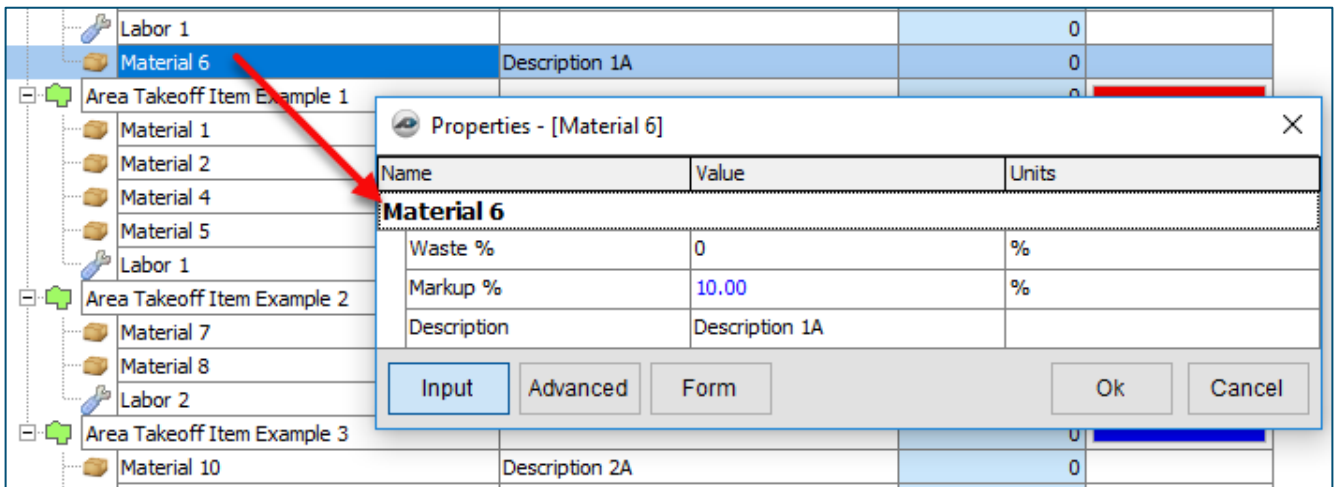
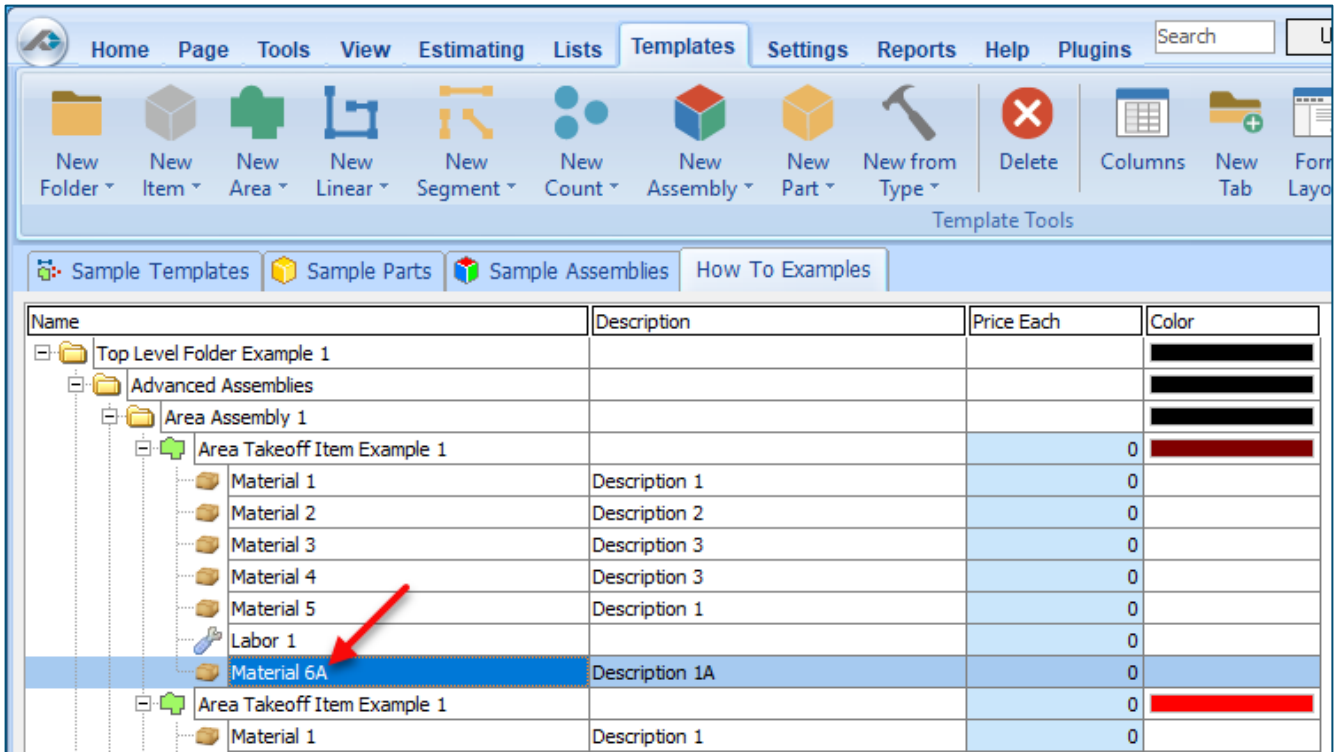


Figure 14

Figure 15 shows **Material 6** renamed to **Material 6A**.



The screenshot shows a software interface with a menu bar (Home, Page, Tools, View, Estimating, Lists, Templates, Settings, Reports, Help, Plugins) and a toolbar with various icons. Below the toolbar is a navigation pane with tabs for 'Sample Templates', 'Sample Parts', 'Sample Assemblies', and 'How To Examples'. The main area displays a table with columns: Name, Description, Price Each, and Color. The table contains a hierarchical tree structure of folders and items. A red arrow points to the row for 'Material 6A'.

Name	Description	Price Each	Color
Top Level Folder Example 1			
Advanced Assemblies			
Area Assembly 1			
Area Takeoff Item Example 1		0	
Material 1	Description 1	0	
Material 2	Description 2	0	
Material 3	Description 3	0	
Material 4	Description 3	0	
Material 5	Description 1	0	
Labor 1		0	
Material 6A	Description 1A	0	
Area Takeoff Item Example 1		0	
Material 1	Description 1	0	

Figure 15

Disclaimer

Any modifications that a user makes to a Starter Pack should always be tested and verified by that user to ensure quantities and calculations are accurate. PlanSwift cannot verify the accuracy of modifications made to templates, parts and assemblies by the user.

How to: Drag and Drop Parts

Parts may be dragged and dropped from one assembly to another assembly. If, for instance, you want to drag the **Material 8** item from **Area Takeoff Item Example 2** up to **Area Takeoff Item Example 1**, click on **Material 8** and drag it up to just below **Material 6A** (see Figure 16) and release the mouse button.

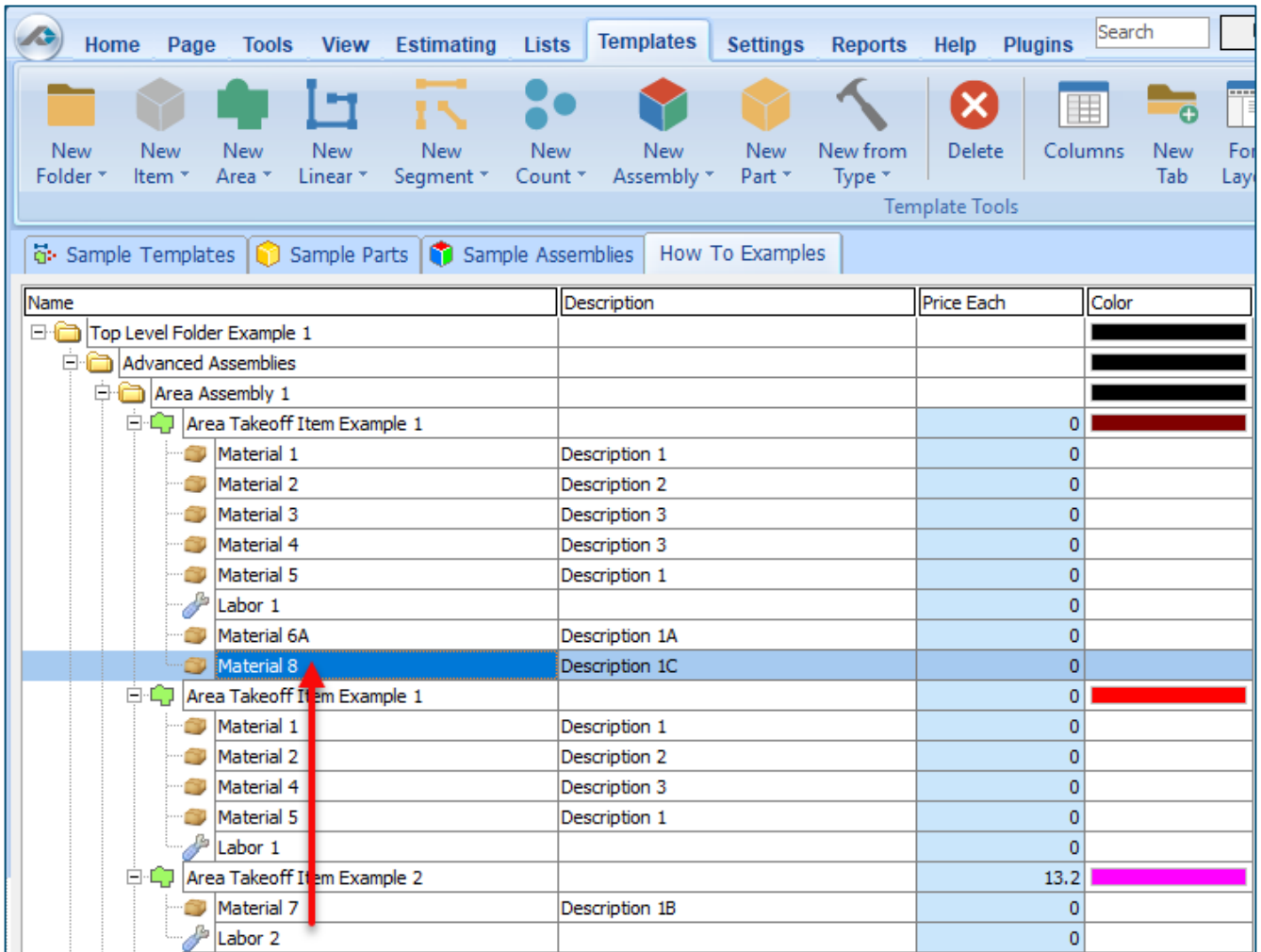


Figure 16

Notice that dragging the part this way *moves* the part from the **Example 2** assembly to the **Example 1** assembly, *not* leaving behind a copy.

The **Templates** sidebar window is a summarized view of everything in the Templates Tab. It is designed for easily dragging and dropping parts and for quickly launching takeoff templates and assemblies.

Parts may be dragged over from the **Templates** sidebar window into the **Templates Tab** window; note that dragging any part from the **Templates** sidebar window makes a copy of it. If, for instance, you want a **Material 7** item added to **Area Takeoff Item Example 1** as a sub-item, simply drag the **Material 7** from the right **Templates** sidebar window over on top of **Area Takeoff Item Example 1** label and release the mouse button. (Figure 17).

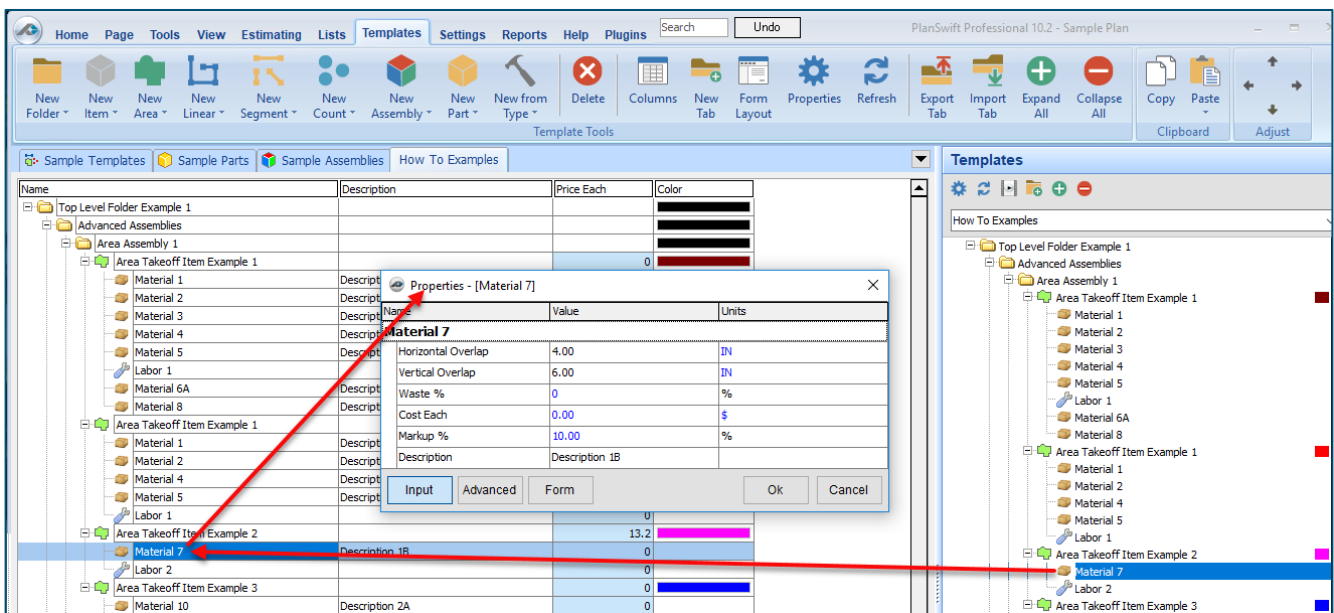


Figure 17

Figure 17 shows the **Material 7** item in place after it was dropped on top of **Area Takeoff Item Example 1**. In addition, the **Properties – [Material 7]** window automatically opens, allowing the user to change any properties for **Material 7**. Click on **Ok** to close the **Properties – [Material 7]** window.

Disclaimer

Any modifications that a user makes to a Starter Pack should always be tested and verified by that user to ensure quantities and calculations are accurate. PlanSwift cannot verify the accuracy of modifications made to templates, parts and assemblies by the user.

FAQ

Question: I've read this user guide, and I still have questions. What do I do?

Answer: PlanSwift recommends that you purchase a training package. We highly recommend new users purchase a training package, because training is customized to each user. We offer [one-on-one training](#) and [classroom training](#). Contact training@PlanSwift.com or at 1-888-752-6794 Ext. 4.

Question: Does the Starter Pack include everything a contractor will need to generate an estimate?

Answer: No. A Starter Pack is a tool to get you started toward creating a complete estimate. For example, the Starter Pack does not include industry pricing for materials and labor. However, you can supply prices for materials and labor on the assemblies and labor included in the Starter Pack.

Question: Do I have to input all the pricing for all my parts?

Answer: Inputting pricing is optional. You can use the Starter Pack to generate quantities that you can then send to your supplier, who can then provide you current pricing. Inputting pricing on your own is optional. If your industry's pricing is not subject to frequent changes, you may want to consider inputting your pricing in PlanSwift.

Compendium

Masonry Assemblies – Block

Name	Description	Division	Type	Color
Block			Folder	
Advanced Assemblies			Folder	
4" CMU Block Wall		04 00 00 Masonry	Area	Green
4"W x 8"H x 16"L CMU Block	Standard Block	04 00 00 Masonry	Material	
Sand	200 Blocks/Ton	04 00 00 Masonry	Material	
Mortar	33 Blocks/Bag	04 00 00 Masonry	Material	
#4 Rebar	28" O.C. Spacing, #4 Rebar, 0.668 LBS/FT	04 00 00 Masonry	Material	
Block Labor	20 Blocks/Hour/Worker, 4 Workers	04 00 00 Masonry	Labor	
6" CMU Block Wall		04 00 00 Masonry	Area	Red
6"W x 8"H x 16"L CMU Block	Standard Block	04 00 00 Masonry	Material	
Sand	200 Blocks/Ton	04 00 00 Masonry	Material	
Mortar	33 Blocks/Bag	04 00 00 Masonry	Material	
#4 Rebar	28" O.C. Spacing, #4 Rebar, 0.668 LBS/FT	04 00 00 Masonry	Material	
Block Labor	20 Blocks/Hour/Worker, 4 Workers	04 00 00 Masonry	Labor	
8" CMU Block Wall		04 00 00 Masonry	Area	Cyan
8"W x 8"H x 16"L CMU Block	Standard Block	04 00 00 Masonry	Material	
Sand	200 Blocks/Ton	04 00 00 Masonry	Material	
Mortar	33 Blocks/Bag	04 00 00 Masonry	Material	
#4 Rebar	28" O.C. Spacing, #4 Rebar, 0.668 LBS/FT	04 00 00 Masonry	Material	
Block Labor	20 Blocks/Hour/Worker, 4 Workers	04 00 00 Masonry	Labor	
10" CMU Block Wall		04 00 00 Masonry	Area	Magenta
10"W x 8"H x 16"L CMU Block	Standard Block	04 00 00 Masonry	Material	
Sand	200 Blocks/Ton	04 00 00 Masonry	Material	
Mortar	33 Blocks/Bag	04 00 00 Masonry	Material	
#4 Rebar	28" O.C. Spacing, #4 Rebar, 0.668 LBS/FT	04 00 00 Masonry	Material	
Block Labor	20 Blocks/Hour/Worker, 4 Workers	04 00 00 Masonry	Labor	
4" CMU Block Wall			Linear	Blue
4"W x 8"H x 16"L CMU Block	Standard Block		Material	
Sand	200 Blocks/Ton		Material	
Mortar	Gray 70 lbs bag		Material	
#4 Rebar	#4 Rebar, 0.668 LBS/FT		Material	
Block Labor	20 Blocks/Hour/Worker, 4 Workers		Labor	
6" CMU Block Wall			Linear	Yellow
6"W x 8"H x 16"L CMU Block	Standard Block		Material	
Sand	200 Blocks/Ton		Material	
Mortar	Gray 70 lbs bag		Material	
#4 Rebar	#4 Rebar, 0.668 LBS/FT		Material	
Block Labor	20 Blocks/Hour/Worker, 4 Workers		Labor	
8" CMU Block Wall			Linear	Light Green
8"W x 8"H x 16"L CMU Block	Standard Block		Material	
Sand	200 Blocks/Ton		Material	
Mortar	Gray 70 lbs bag		Material	
#4 Rebar	#4 Rebar, 0.668 LBS/FT		Material	
Block Labor	20 Blocks/Hour/Worker, 4 Workers		Labor	
10" CMU Block Wall			Linear	Red
10"W x 8"H x 16"L CMU Block	Standard Block		Material	
Sand	200 Blocks/Ton		Material	
Mortar	Gray 70 lbs bag		Material	
#4 Rebar	#4 Rebar, 0.668 LBS/FT		Material	
Block Labor	20 Blocks/Hour/Worker, 4 Workers		Labor	
Cap Block			Segment	Dark Green
8"W x 2"H x 16"L Cap Block	Straight		Material	
Type-S Mortar	50 Ft/Bag		Material	
Cap Labor			Labor	

Masonry Assemblies – Block -- Continued

Name	Description	Division	Type	Color
Steel Lintel			Count	
6"W x 3"H x 4" L Steel Lintel			Material	
Lintel Labor			Labor	
Concrete Lintel			Count	
6"W x 3"H x 4" L Concrete Lintel			Material	
Lintel Labor			Labor	
Basic Assemblies			Folder	
CMU Block		04 00 00 Masonry	Area	
Material	CMU Block	04 00 00 Masonry	Material	
Labor	CMU Block	04 00 00 Masonry	Labor	
Glass Block		04 00 00 Masonry	Area	
Material	Glass Block	04 00 00 Masonry	Material	
Labor	Glass Block	04 00 00 Masonry	Labor	
CMU Block Wall		04 00 00 Masonry	Linear	
Material	CMU Block Wall	04 00 00 Masonry	Material	
Labor	CMU Block Wall	04 00 00 Masonry	Labor	
Glass Block Wall		04 00 00 Masonry	Linear	
Material	Glass Block Wall	04 00 00 Masonry	Material	
Labor	Glass Block Wall	04 00 00 Masonry	Labor	
Pillar Cap		01 00 00 General Requirements	Count	
Material	Pillar Cap	01 00 00 General Requirements	Material	
Labor	Pillar Cap	01 00 00 General Requirements	Labor	
Lintel		01 00 00 General Requirements	Count	
Material	Lintel	01 00 00 General Requirements	Material	
Labor	Lintel	01 00 00 General Requirements	Labor	

Masonry Assemblies – Brick -- Continued

Name	Description	Division	Type	Color
Brick			Folder	
Advanced Assemblies			Folder	
Standard Brick Wall		04 00 00 Masonry	Area	Yellow
3.62" D x 2.25" H x 8" L Standard Brick		04 00 00 Masonry	Material	
Mason Sand	1000 Bricks/Ton	04 00 00 Masonry	Material	
Mortar	140 Bricks/Bag	04 00 00 Masonry	Material	
Wall Ties	2.67 Sq Ft/Wall Tie, 500/Box	04 00 00 Masonry	Material	
Weather Barrier	1,295.67 Sq Ft/Roll	07 00 00 Thermal and Moisture Protection	Material	
Brick Labor	Price per SQ FT	04 00 00 Masonry	Labor	
Modular Brick Wall		04 00 00 Masonry	Area	Green
3.62" D x 2.25" H x 7.62" L Modular Brick		04 00 00 Masonry	Material	
Mason Sand	1000 Bricks/Ton	04 00 00 Masonry	Material	
Mortar	140 Bricks/Bag	04 00 00 Masonry	Material	
Wall Tie	2.67 Sq Ft/Wall Tie, 500/Box	04 00 00 Masonry	Material	
Weather Barrier	1,295.67 Sq Ft/Roll	07 00 00 Thermal and Moisture Protection	Material	
Brick Labor	Price per SQ FT	04 00 00 Masonry	Labor	
Norman Brick Wall		04 00 00 Masonry	Area	Red
3.62" D x 2.25" H x 11.62" L Norman Brick		04 00 00 Masonry	Material	
Mason Sand	1000 Bricks/Ton	04 00 00 Masonry	Material	
Mortar	140 Bricks/Bag	04 00 00 Masonry	Material	
Wall Tie	2.67 Sq Ft/Wall Tie, 500/Box	04 00 00 Masonry	Material	
Weather Barrier	1,295.67 Sq Ft/Roll	07 00 00 Thermal and Moisture Protection	Material	
Brick Labor	Price per SQ FT	04 00 00 Masonry	Labor	
Roman Brick Wall		04 00 00 Masonry	Area	Teal
3.62" D x 1.62" H x 11.62" L Roman Brick		04 00 00 Masonry	Material	
Mason Sand	1000 Bricks/Ton	04 00 00 Masonry	Material	
Mortar	140 Bricks/Bag	04 00 00 Masonry	Material	
Wall Tie	2.67 Sq Ft/Wall Tie, 500/Box	04 00 00 Masonry	Material	
Weather Barrier	1,295.67 Sq Ft/Roll	07 00 00 Thermal and Moisture Protection	Material	
Brick Labor	Price per SQ FT	04 00 00 Masonry	Labor	
2.25" True Pavers		04 00 00 Masonry	Area	Purple
4" D x 2.25" H x 8" L True Brick		04 00 00 Masonry	Material	
Mason Sand	1000 Bricks/Ton	04 00 00 Masonry	Material	
Mortar	140 Bricks/Bag	04 00 00 Masonry	Material	
Paver Labor	Price per SQ FT	04 00 00 Masonry	Labor	
1.25" Modular Pavers		04 00 00 Masonry	Area	Dark Blue
3.62" D x 1.25" H x 7.62" L Modular Brick		04 00 00 Masonry	Material	
Mason Sand	1000 Bricks/Ton	04 00 00 Masonry	Material	
Mortar	140 Bricks/Bag	04 00 00 Masonry	Material	
Paver Labor	Price per SQ FT	04 00 00 Masonry	Labor	
Standard Brick Wall		04 00 00 Masonry	Linear	Olive Green
3.62" W x 2.25" H x 8" L Standard Brick		04 00 00 Masonry	Material	
Mason Sand	1000 Bricks/Ton	04 00 00 Masonry	Material	
Mortar	140 Bricks/Bag	04 00 00 Masonry	Material	
Wall Tie	2.67 Sq Ft/Wall Tie, 500/Box	04 00 00 Masonry	Material	
Weather Barrier	1,295.67 Sq Ft/Roll	07 00 00 Thermal and Moisture Protection	Material	
Brick Labor	Price per SQ FT	04 00 00 Masonry	Labor	

Masonry Assemblies – Brick -- Continued

Name	Description	Division	Type	Color
[-] Modular Brick Wall		04 00 00 Masonry	Linear	Green
[-] 3.62" W x 2.25" H x 7.62" L Modular Brick		04 00 00 Masonry	Material	
[-] Mason Sand	1000 Bricks/Ton	04 00 00 Masonry	Material	
[-] Mortar	140 Bricks/Bag	04 00 00 Masonry	Material	
[-] Wall Tie	2.67 Sq Ft/Wall Tie, 500/Box	04 00 00 Masonry	Material	
[-] Weather Barrier	1,295.67 Sq Ft/Roll	07 00 00 Thermal and Moisture Protection	Material	
[-] Brick Labor	Price per SQ FT	04 00 00 Masonry	Labor	
[-] Norman Brick Wall		04 00 00 Masonry	Linear	Red
[-] 3.62" W x 2.25" H x 11.62" L Norman Brick		04 00 00 Masonry	Material	
[-] Mason Sand	1000 Bricks/Ton	04 00 00 Masonry	Material	
[-] Mortar	140 Bricks/Bag	04 00 00 Masonry	Material	
[-] Wall Tie	2.67 Sq Ft/Wall Tie, 500/Box	04 00 00 Masonry	Material	
[-] Weather Barrier	1,295.67 Sq Ft/Roll	07 00 00 Thermal and Moisture Protection	Material	
[-] Brick Labor	Price per SQ FT	04 00 00 Masonry	Labor	
[-] Roman Brick Wall		04 00 00 Masonry	Linear	Cyan
[-] 3.62" W x 1.62" H x 11.62" L Roman Brick		04 00 00 Masonry	Material	
[-] Mason Sand	1000 Bricks/Ton	04 00 00 Masonry	Material	
[-] Mortar	140 Bricks/Bag	04 00 00 Masonry	Material	
[-] Wall Tie	2.67 Sq Ft/Wall Tie, 500/Box	04 00 00 Masonry	Material	
[-] Weather Barrier	1,295.67 Sq Ft/Roll	07 00 00 Thermal and Moisture Protection	Material	
[-] Brick Labor	Price per SQ FT	04 00 00 Masonry	Labor	
[-] Standard Brick Edge		04 00 00 Masonry	Segment	Magenta
[-] 3.62" W x 2.25" H x 9.62" L Brick	4" x 2.25" x 9.62" Nominal Brick Size	04 00 00 Masonry	Material	
[-] Sand	1000 Bricks/Ton	04 00 00 Masonry	Material	
[-] Mortar	140 Bricks/Bag	04 00 00 Masonry	Material	
[-] Brick Labor	Price per Ft	04 00 00 Masonry	Labor	
[-] Steel Lintel			Count	Blue
[-] 3"W x 3"H x 4" L Steel Lintel			Material	
[-] Lintel Labor			Labor	
[-] Concrete Lintel			Count	Yellow
[-] 3"W x 3"H x 4" L Concrete Lintel			Material	
[-] Lintel Labor			Labor	

Masonry Assemblies – Brick -- Continued

Name	Description	Division	Type	Color
Basic Assemblies			Folder	
2-1/4" Modular Brick		04 00 00 Masonry	Area	
Material	2-1/4" Modular Brick	04 00 00 Masonry	Material	
Labor	2-1/4" Modular Brick	04 00 00 Masonry	Labor	
2-3/4" Modular Brick		04 00 00 Masonry	Area	
Material	2-3/4" Modular Brick	04 00 00 Masonry	Material	
Labor	2-3/4" Modular Brick	04 00 00 Masonry	Labor	
2-1/4" Norman Brick		04 00 00 Masonry	Area	
Material	2-1/4" Norman Brick	04 00 00 Masonry	Material	
Labor	2-1/4" Norman Brick	04 00 00 Masonry	Labor	
4" Norman Brick		04 00 00 Masonry	Area	
Material	4" Norman Brick	04 00 00 Masonry	Material	
Labor	4" Norman Brick	04 00 00 Masonry	Labor	
3" King Brick		04 00 00 Masonry	Area	
Material	3" King Brick	04 00 00 Masonry	Material	
Labor	3" King Brick	04 00 00 Masonry	Labor	
1-1/4" Modular Paver		04 00 00 Masonry	Area	
Material	1-1/4" Modular Paver	04 00 00 Masonry	Material	
Labor	1-1/4" Modular Paver	04 00 00 Masonry	Labor	
2-1/4" Modular Paver		04 00 00 Masonry	Area	
Material	2-1/4" Modular Paver	04 00 00 Masonry	Material	
Labor	2-1/4" Modular Paver	04 00 00 Masonry	Labor	
2-1/4" Modular Brick		04 00 00 Masonry	Linear	
Material	2-1/4" Modular Brick	04 00 00 Masonry	Material	
Labor	2-1/4" Modular Brick	04 00 00 Masonry	Labor	
2-3/4" Modular Brick		04 00 00 Masonry	Linear	
Material	2-3/4" Modular Brick	04 00 00 Masonry	Material	
Labor	2-3/4" Modular Brick	04 00 00 Masonry	Labor	
2-1/4" Norman Brick		04 00 00 Masonry	Linear	
Material	2-1/4" Norman Brick	04 00 00 Masonry	Material	
Labor	2-1/4" Norman Brick	04 00 00 Masonry	Labor	
4" Norman Brick		04 00 00 Masonry	Linear	
Material	4" Norman Brick	04 00 00 Masonry	Material	
Labor	4" Norman Brick	04 00 00 Masonry	Labor	
3" King Brick		04 00 00 Masonry	Linear	
Material	3" King Brick	04 00 00 Masonry	Material	
Labor	3" King Brick	04 00 00 Masonry	Labor	
Lintel		01 00 00 General Requirements	Count	
Material	Lintel	01 00 00 General Requirements	Material	
Labor	Lintel	01 00 00 General Requirements	Labor	
Pillar Cap		01 00 00 General Requirements	Count	
Material	Pillar Cap	01 00 00 General Requirements	Material	
Labor	Pillar Cap	01 00 00 General Requirements	Labor	

Masonry Assemblies – Stone

Name	Description	Division	Type	Color
Stone			Folder	Black
Advanced Assemblies			Folder	Black
Stone			Area	Green
Stone	Priced per Sq Ft		Material	
Type-S Mortar	10 Sq Ft/Bag		Material	
Metal Lath	Self-Furring 36" x 50'		Material	
Drainage Mesh	3.26' x 61.5' Roll		Material	
Vapor Barrier	3' x 100' Roll @ 40 mil		Material	
Prep Labor	Priced per Sq Ft		Labor	
Stone Labor	Priced per Sq Ft		Labor	
Ledgestone Stone			Area	Red
Ledgestone Stone	Priced per Sq Ft		Material	
Type-S Mortar	10 Sq Ft/Bag		Material	
Metal Lath	Self-Furring 36" x 50'		Material	
Drainage Mesh	3.26' x 61.5' Roll		Material	
Vapor Barrier	3' x 100' Roll @ 40 mil		Material	
Prep Labor	Priced per Sq Ft		Labor	
Stone Labor	Priced per Sq Ft		Labor	
River Rock Stone			Area	Cyan
River Rock Stone	Priced per Sq Ft		Material	
Type-S Mortar	10 Sq Ft/Bag		Material	
Metal Lath	Self-Furring 36" x 50'		Material	
Drainage Mesh	3.26' x 61.5' Roll		Material	
Vapor Barrier	3' x 100' Roll @ 40 mil		Material	
Prep Labor	Priced per Sq Ft		Labor	
Stone Labor	Priced per Sq Ft		Labor	
Drystack Stone			Area	Magenta
Drystack Stone	Priced per Sq Ft		Material	
Type-S Mortar	10 Sq Ft/Bag		Material	
Metal Lath	Self-Furring 36" x 50'		Material	
Drainage Mesh	3.26' x 61.5' Roll		Material	
Vapor Barrier	3' x 100' Roll @ 40 mil		Material	
Prep Labor	Priced per Sq Ft		Labor	
Stone Labor	Priced per Sq Ft		Labor	
Stone			Linear	Blue
Stone	20 Lbs/ Sq Ft		Material	
Type-S Mortar	10 Sq Ft/Bag		Material	
Metal Lath	Self-Furring 36"W x 100'L		Material	
Drainage Mesh	3.26' x 61.5' Roll		Material	
Vapor Barrier	3' x 100' Roll @ 40 mil		Material	
Prep Labor	Priced per Sq Ft		Labor	
Stone Labor	Priced per Sq Ft		Labor	

Masonry Assemblies – Stone -- Continued

Name	Description	Division	Type	Color
[-] Ledgestone Stone			Linear	Yellow
[-] Ledgestone Stone	20 Lbs/ Sq Ft		Material	
[-] Type-S Mortar	10 Sq Ft/Bag		Material	
[-] Metal Lath	Self-Furring 36"W x 100'L		Material	
[-] Drainage Mesh	3.26' x 61.5' Roll		Material	
[-] Vapor Barrier	3' x 100' Roll @ 40 mil		Material	
[-] Prep Labor	Priced per Sq Ft		Labor	
[-] Stone Labor	Priced per Sq Ft		Labor	
[-] River Rock Stone			Linear	Green
[-] River Rock Stone	20 Lbs/ Sq Ft		Material	
[-] Type-S Mortar	10 Sq Ft/Bag		Material	
[-] Metal Lath	Self-Furring 36"W x 100'L		Material	
[-] Drainage Mesh	3.26' x 61.5' Roll		Material	
[-] Vapor Barrier	3' x 100' Roll @ 40 mil		Material	
[-] Prep Labor	Priced per Sq Ft		Labor	
[-] Stone Labor	Priced per Sq Ft		Labor	
[-] Drystack Stone			Linear	Red
[-] Drystack Stone	20 Lbs/ Sq Ft		Material	
[-] Type-S Mortar	10 Sq Ft/Bag		Material	
[-] Metal Lath	Self-Furring 36"W x 100'L		Material	
[-] Drainage Mesh	3.26' x 61.5' Roll		Material	
[-] Vapor Barrier	3' x 100' Roll @ 40 mil		Material	
[-] Prep Labor	Priced per Sq Ft		Labor	
[-] Stone Labor	Priced per Sq Ft		Labor	
[-] Corner Stone			Segment	Teal
[-] Castle Rock Corner Stone	20 Lbs/ Sq Ft		Material	
[-] Type-S Mortar	10 Ft/Bag		Material	
[-] Prep Labor			Labor	
[-] Stone Labor			Labor	
[-] Sill Stone			Segment	Purple
[-] Castle Rock Sill Stone	20 Lbs/ Sq Ft		Material	
[-] Type-S Mortar	10 Ft/Bag		Material	
[-] Prep Labor			Labor	
[-] Stone Labor			Labor	
[-] Cap Stone			Segment	Dark Blue
[-] Castle Rock Cap Stone	20 Lbs/ Sq Ft		Material	
[-] Type-S Mortar	10 Ft/Bag		Material	
[-] Prep Labor			Labor	
[-] Stone Labor			Labor	
[-] Utility Box Stone 6" x 8"			Count	Olive Green
[-] Utility Box Stone 6" x 8"			Material	
[-] Stone Labor			Labor	
[-] Trim Stone Stone 6" x 8"			Count	Dark Green
[-] Trim Stone Stone 6" x 8"			Material	
[-] Stone Labor			Labor	
[-] Light Box Stone 9" x 12"			Count	Red
[-] Light Box Stone 9" x 12"			Material	
[-] Stone Labor			Labor	
[-] Key Stone Stone 8" x 10"			Count	Cyan
[-] Key Stone Stone 8" x 10"			Material	
[-] Stone Labor			Labor	

Masonry Assemblies – Stone -- Continued

Name	Description	Division	Type	Color
Stone Labor			Labor	
Basic Assemblies			Folder	
Stone		04 00 00 Masonry	Area	Blue
Material	Stone	04 00 00 Masonry	Material	
Labor	Stone	04 00 00 Masonry	Labor	
Stone Wall		04 00 00 Masonry	Linear	Yellow
Material	Stone Wall	04 00 00 Masonry	Material	
Labor	Stone Wall	04 00 00 Masonry	Labor	
Precast Sill		04 00 00 Masonry	Segment	Green
Material	Precast Sill	04 00 00 Masonry	Material	
Labor	Precast Sill	04 00 00 Masonry	Labor	
Cast Stone		04 00 00 Masonry	Segment	Red
Material	Cast Stone	04 00 00 Masonry	Material	
Labor	Cast Stone	04 00 00 Masonry	Labor	
Corner Stones		04 00 00 Masonry	Segment	Teal
Material	Corner Stones	04 00 00 Masonry	Material	
Labor	Corner Stones	04 00 00 Masonry	Labor	
Decorative Stone		01 00 00 General Requirements	Count	Purple
Material	Decorative Stone	01 00 00 General Requirements	Material	
Labor	Decorative Stone	01 00 00 General Requirements	Labor	
Utility Box Stone		01 00 00 General Requirements	Count	Dark Blue
Material	Utility Box Stone	01 00 00 General Requirements	Material	
Labor	Utility Box Stone	01 00 00 General Requirements	Labor	
Pillar Cap		01 00 00 General Requirements	Count	Olive Green
Material	Pillar Cap	01 00 00 General Requirements	Material	
Labor	Pillar Cap	01 00 00 General Requirements	Labor	

Masonry Parts – Block

Name	Description	Division	Type	Color
Block			Folder	■
Area Takeoff Parts			Folder	■
2"W x 8"H x 16"L CMU Block		04 00 00 Masonry	Material	
4"W x 8"H x 16"L CMU Block		04 00 00 Masonry	Material	
6"W x 8"H x 16"L CMU Block		04 00 00 Masonry	Material	
8"W x 8"H x 16"L CMU Block		04 00 00 Masonry	Material	
12"W x 8"H x 16"L CMU Block		04 00 00 Masonry	Material	
#4 Rebar	16" O.C. Spacing, #4 Rebar, 0.668 LBS/FT	04 00 00 Masonry	Material	
#5 Rebar	16" O.C. Spacing, #5 Rebar, 1.043 LBS/FT	04 00 00 Masonry	Material	
Type-N Mortar	80lb Bag, Type-N Mortar	04 00 00 Masonry	Material	
Mason Sand	500 Bricks/Ton	04 00 00 Masonry	Material	
Block Labor	Priced per Sq Ft	04 00 00 Masonry	Labor	
Block Labor Hours	Priced per Hour	04 00 00 Masonry	Labor	
Linear Takeoff Parts			Folder	■
3"W x 8"H x 16"L CMU Block			Material	
4"W x 8"H x 16"L CMU Block			Material	
6"W x 8"H x 16"L CMU Block			Material	
8"W x 8"H x 16"L CMU Block			Material	
12"W x 8"H x 16"L CMU Block			Material	
#4 Rebar	16" O.C. Spacing, #4 Rebar, 0.668 LBS/FT	04 00 00 Masonry	Material	
#5 Rebar	16" O.C. Spacing, #5 Rebar, 1.043 LBS/FT	04 00 00 Masonry	Material	
Type-N Mortar	80lb Bag, Type-N Mortar	04 00 00 Masonry	Material	
Mason Sand	500 Blocks/Ton	04 00 00 Masonry	Material	
Block Labor	Priced per Sq Ft		Labor	
Block Labor Hours	Priced per Hour		Labor	
Count Takeoff Parts			Folder	■
8"W x 3"H x 4" L Steel Lintel			Material	
8"W x 3"H x 5" L Steel Lintel			Material	
8"W x 3"H x 6" L Steel Lintel			Material	
8"W x 3"H x 4" L Concrete Lintel			Material	
Lintel Labor	Priced Each		Labor	

Masonry Parts – Brick

Name	Description	Division	Type	Color
Brick			Folder	■
Area Takeoff Parts			Folder	■
3.62" D x 2.25" H x 9.62" L Modular Brick		04 00 00 Masonry	Material	
3.56" D x 2.25" H x 11.56" L Norman Brick		04 00 00 Masonry	Material	
3.62" D x 2.25" H x 7.62" L Modular Paver		04 00 00 Masonry	Material	
4.00" D x 2.25" H x 8.00" L True Paver		04 00 00 Masonry	Material	
Wall Ties	2.67 Sq Ft/Wall Tie, 500.00/Box	04 00 00 Masonry	Material	
Mason Sand	1000 Bricks/Ton	04 00 00 Masonry	Material	
Type-N Mortar	80lb Bag, Type-N Mortar	04 00 00 Masonry	Material	
Weather Barrier	1,295.67 Sq Ft/Roll	07 00 00 Thermal and Moisture Protection	Material	
Brick Labor	Priced per Sq Ft	04 00 00 Masonry	Labor	
Paver Labor	Priced per Sq Ft	04 00 00 Masonry	Labor	
Brick Labor Hours	Priced per Hour	04 00 00 Masonry	Labor	
Paver Labor Hours	Priced per Hour	04 00 00 Masonry	Labor	
Linear Takeoff Parts			Folder	■
3.62" W x 2.25" H x 9.62" L Modular Brick		04 00 00 Masonry	Material	
3.56" W x 2.25" H x 11.62" L Norman Brick		04 00 00 Masonry	Material	
Wall Ties	2.67 Sq Ft/Wall Tie, 500.00/Box	04 00 00 Masonry	Material	
Mason Sand	1000 Bricks/Ton	04 00 00 Masonry	Material	
Type-N Mortar	140 Bricks/Bag	04 00 00 Masonry	Material	
Weather Barrier	1,295.67 Sq Ft/Roll	07 00 00 Thermal and Moisture Protection	Material	
Brick Labor	Priced per Sq Ft	04 00 00 Masonry	Labor	
Brick Labor Hours	Priced per Hour	04 00 00 Masonry	Labor	
Count Takeoff Parts			Folder	■
3"W x 3"H x 4" L Steel Lintel			Material	
3"W x 3"H x 5" L Steel Lintel			Material	
3"W x 3"H x 6" L Steel Lintel			Material	
Lintel Labor	Priced Each		Labor	

Masonry Parts – Stone

Name	Description	Division	Type	Color
Stone			Folder	█
Area Takeoff Parts			Folder	█
Drystack Stone			Material	
River Rock Stone			Material	
Stone			Material	
Weather Barrier	1,295.67 Sq Ft/Roll	07 00 00 Thermal and Moisture Protection	Material	
Type-N Mortar	80lb Bag, Type-N Mortar	04 00 00 Masonry	Material	
Metal Lath	Self-Furring 36"W x 100'L Roll(s)		Material	
Drainage Mesh	4' x 50' Roll		Material	
Ledgestone Stone			Material	
Prep Labor	Priced per Sq Ft	07 00 00 Thermal and Moisture Protection	Labor	
Stone Labor	Priced per Sq Ft	07 00 00 Thermal and Moisture Protection	Labor	
Stone Labor Hours	Priced per Hour	07 00 00 Thermal and Moisture Protection	Labor	
Linear Takeoff Parts			Folder	█
Ledgestone Stone			Material	
Drystack Stone			Material	
River Rock Stone			Material	
Stone			Material	
Type-S Mortar	80 lb, Type-S @ 1,800 psi strength		Material	
10' Weep Screed	Galvanized	07 00 00 Thermal and Moisture Protection	Material	
Weather Barrier	1,295.67 Sq Ft/Roll	07 00 00 Thermal and Moisture Protection	Material	
Drainage Mesh	4' x 50' Roll		Material	
Prep Labor	Priced per Sq Ft		Labor	
Stone Labor	Priced per Sq Ft		Labor	
Stone Labor Hours	Priced per Hour	07 00 00 Thermal and Moisture Protection	Labor	
Count Takeoff Parts			Folder	█
Sill Stone 4" x 30"			Material	
Utility Box Stone 9" x 12"			Material	
Pillar Cap Stone 16" x 16"			Material	
Light Box Stone 9" x 12"			Material	
Stone Labor	Priced Each		Labor	

Masonry Parts – Lump Sum Parts

Name	Description	Division	Type	Color
Lump Sum Parts			Folder	█
Scaffolding		04 00 00 Masonry	Equipment	
Mixer		04 00 00 Masonry	Equipment	
Forklift		04 00 00 Masonry	Equipment	
Scissor Lift		04 00 00 Masonry	Equipment	
Paint		04 00 00 Masonry	Subcontra	
Siding		04 00 00 Masonry	Subcontra	
Soffit and Fascia		04 00 00 Masonry	Subcontra	
Rain Gutters		04 00 00 Masonry	Subcontra	
Insulation		04 00 00 Masonry	Subcontra	
Concrete		04 00 00 Masonry	Subcontra	
Weather Shield			Material	
Labor		07 00 00 Thermal and Moisture Protection	Labor	
Allowance		04 00 00 Masonry	Other	