

Flooring Starter Pack

User Guide

UPDATED ON 11/21/2018

PlanSwift

Authored by: Dave Hansen



Table of Contents

Table of Contents	2
Overview	3
Purchasing and Installation	4
Purchasing Plugins.....	4
Installation and Uninstallation	4
Features.....	4
How To	5
How to: Copy and Paste an Assembly	5
How to: Copy and Paste Parts.....	10
How to: Drag and Drop Parts	15
FAQ.....	17
Compendium.....	18
Flooring Assemblies	18
Flooring Parts	24

Overview

This guide will teach you how to properly use the tools and features found within the Flooring Starter Pack. It is designed for use with PlanSwift® Takeoff and Estimating Software. This guide is not meant to be a step-by-step “walk through” document, although it can be used as a reference for getting the work done. If you encounter technical difficulty, consult this guide (including the [FAQ](#) section of this user manual) or contact the technical support department at:

PlanSwift® Technical Support
support@PlanSwift.com
1-888-752-6794 ext. 2

PlanSwift also offers additional training. For training options, contact the training department at:

PlanSwift® Training Department
training@PlanSwift.com
1-888-752-6794 ext. 4

Purchasing and Installation

Purchasing Plugins

If you need to purchase PlanSwift or a plugin product, contact the Sales Department at:

PlanSwift® Sales
sales@PlanSwift.com
1-888-752-6794 Ext. 1

Installation and Uninstallation

Installing and uninstalling starter packs is simple. For installing them, click on the Import Plugin Package icon (arrow 1 in Figure 1) from the PlanSwift Main Ribbon-bar **Plugin** tab (arrow 3 of Figure 1) and follow the prompts from there. For uninstalling, click on the Uninstall Plugin (arrow 2 in Figure 1) and follow those prompts.

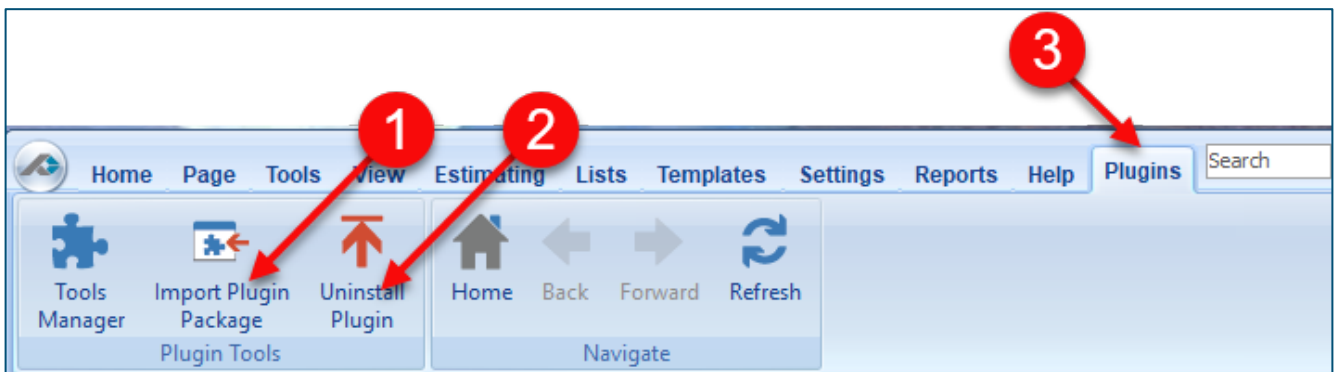


Figure 1

Features

The Flooring Starter Pack includes Flooring Assemblies and Flooring Parts found in the Templates tab of PlanSwift. These are listed in the [Compendium](#) at the end of this guide. With these Flooring Starter Pack assemblies and parts, PlanSwift users can easily customize assemblies and parts for later use. Starter Packs contain a large library of prebuilt templates, parts and assemblies. Modifying the library of parts and assemblies for any Starter Pack allows users the ability to customize their Templates to their

specific needs. Users will save countless hours of setup by utilizing a Starter Pack as their starting point for building custom parts and assemblies. The instructions below will guide new users through the basics of modifying parts and assemblies. We highly recommend purchasing a training package for accelerated learning and faster customization.

How To

How to: Copy and Paste an Assembly

The purpose of copying and pasting an assembly is to allow the user to copy and then modify the assembly for later use. As an example, you may want two different assemblies: one might include a part, and another might have an alternative part or not include that part at all. By copying one assembly and then modifying and renaming the copy (for easy identification), you can have two different assemblies available, allowing for easier and faster takeoffs. Figure 2 shows the **Templates Tab** (arrow 1) and the **Area Takeoff Item Example 1** assembly (arrow 2). If you want to add another assembly but with no **Material 3**, then you would click on the assembly you want to copy (arrow 2), click on **Copy** (arrow 3), and then click on **Paste** (arrow 4).

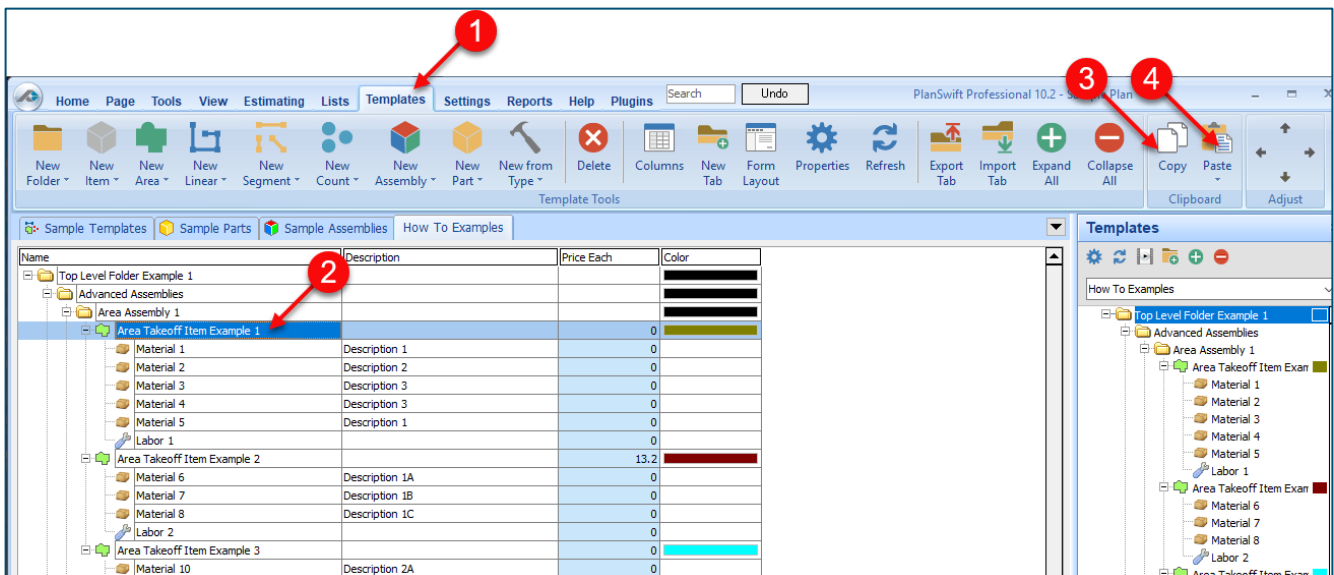


Figure 2

Figure 3 shows the original (arrows 1) and new **Area Takeoff Item Example 1** assembly (arrow 2). To delete the **Material 3** (arrow 3) from the newly created **Area Takeoff Item Example 1** assembly (arrow 2), click on **Material 3** (arrow 3), click on **Delete** (arrow 4), and click on **OK** in the popup window to confirm the deletion.

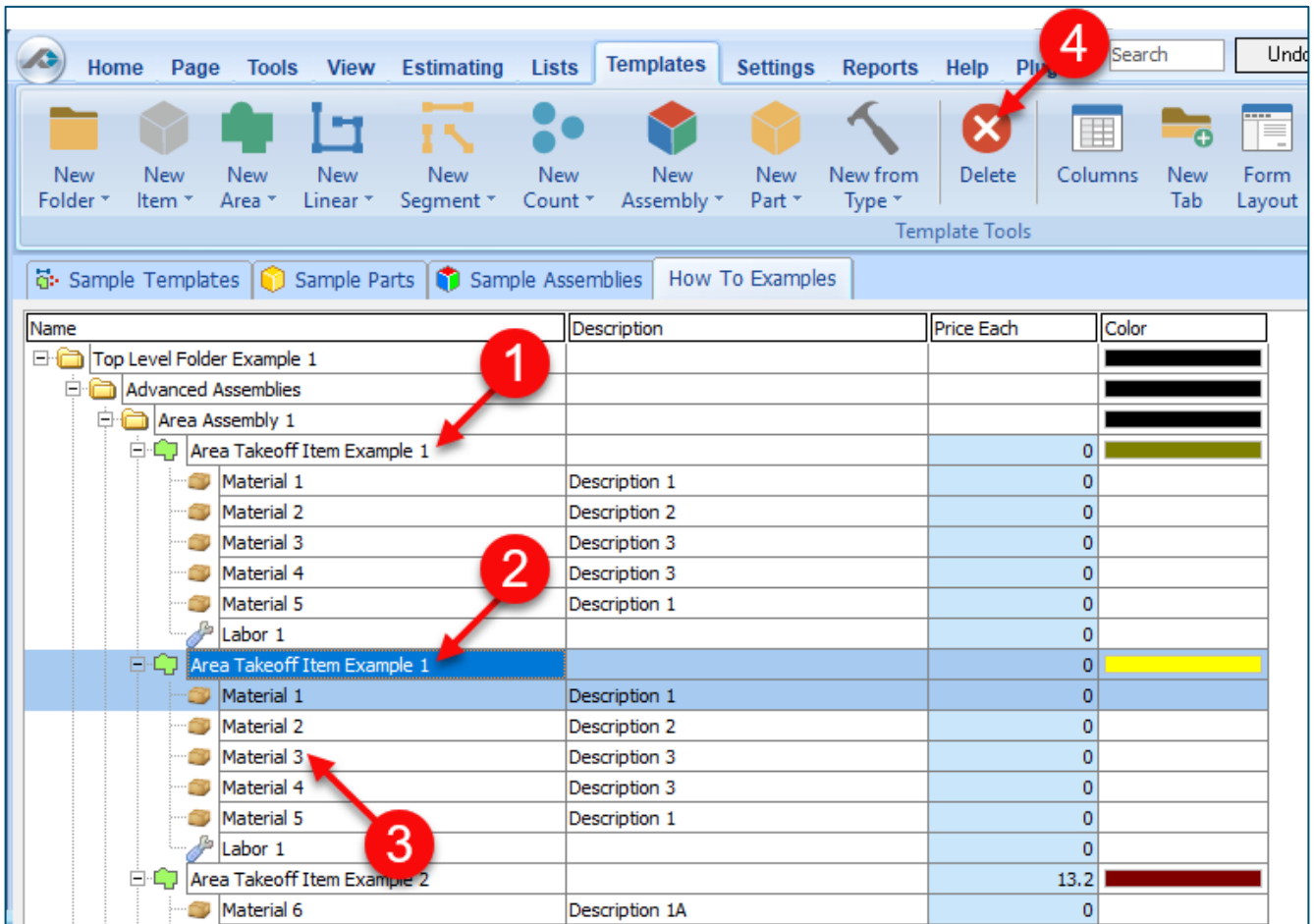


Figure 3

Figure 4 now shows the two assemblies, one with (arrow 1) and one without (arrow 2) the **Material 3** item. You can now change the description of the duplicated **Area Takeoff Item Example 1** (arrow 3) without the **Material 3** item by double-clicking the duplicate **Area Takeoff Item Example 1** (arrow 3).

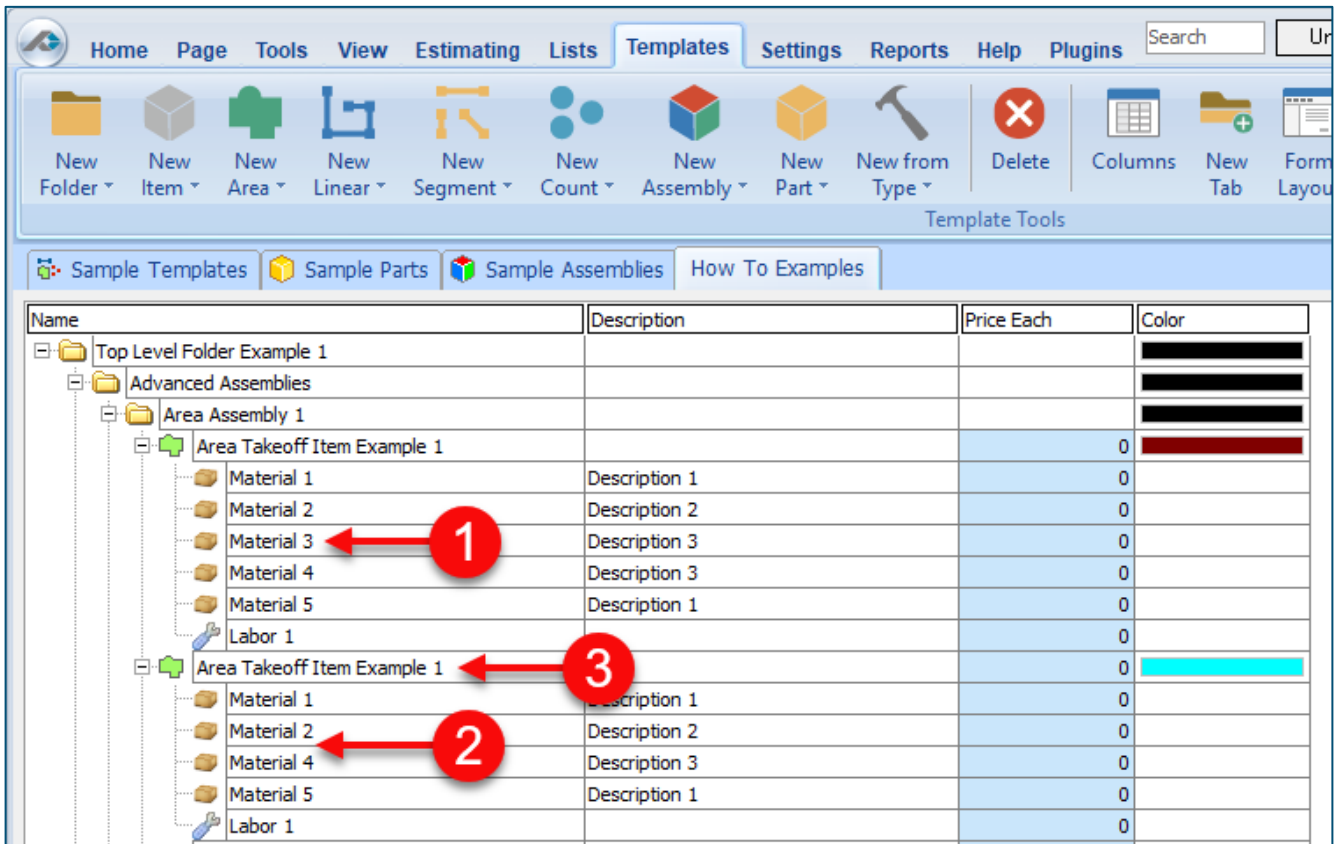


Figure 4

This opens the **Properties – [Area Takeoff Item Example 1]** window (Figure 5) where you can change the assembly’s name to something like **Area Takeoff Item Example 1— No Material 3** to make it easier to identify.

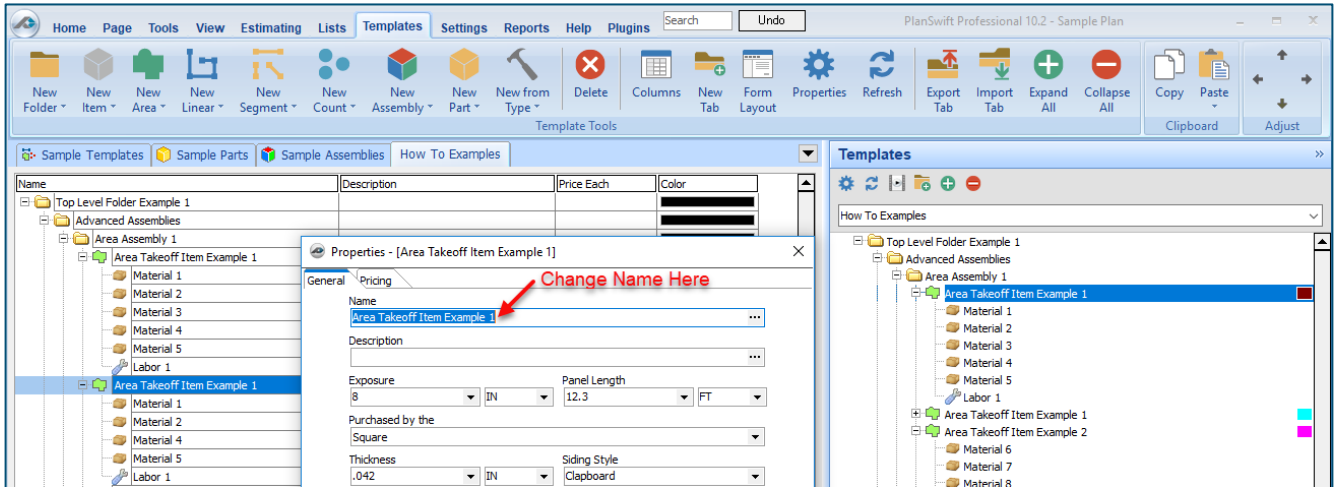


Figure 5

Click on **Ok** in the **Properties** window after you have entered the name. Figure 6 shows the new name.

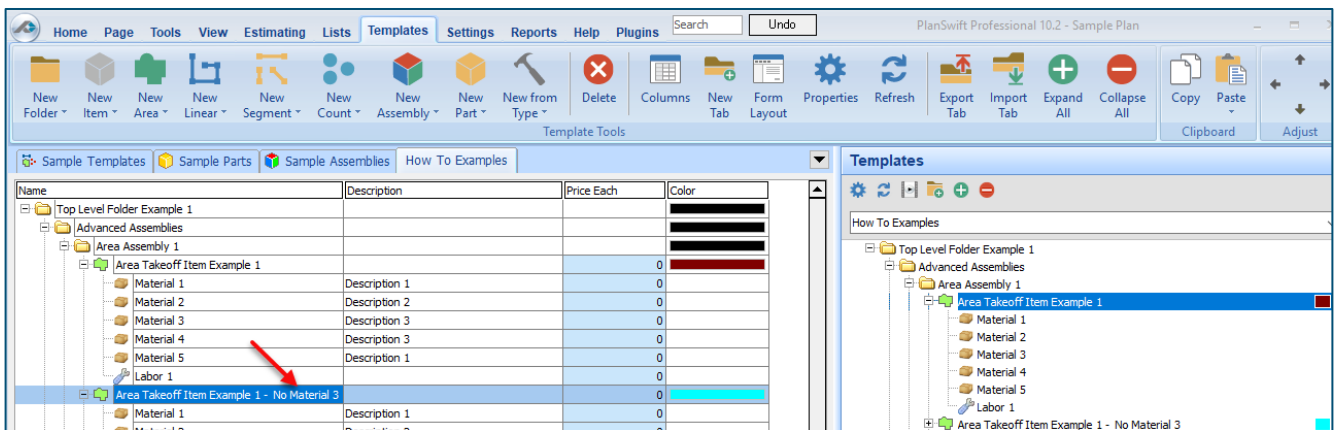


Figure 6

To perform a takeoff with the **Area Takeoff Item Example 1—No Material 3** assembly, go to the takeoff page, click on the green **Record Button** (see the arrow in Figure 7) in the **Templates** sidebar window, and then proceed to do your takeoff.

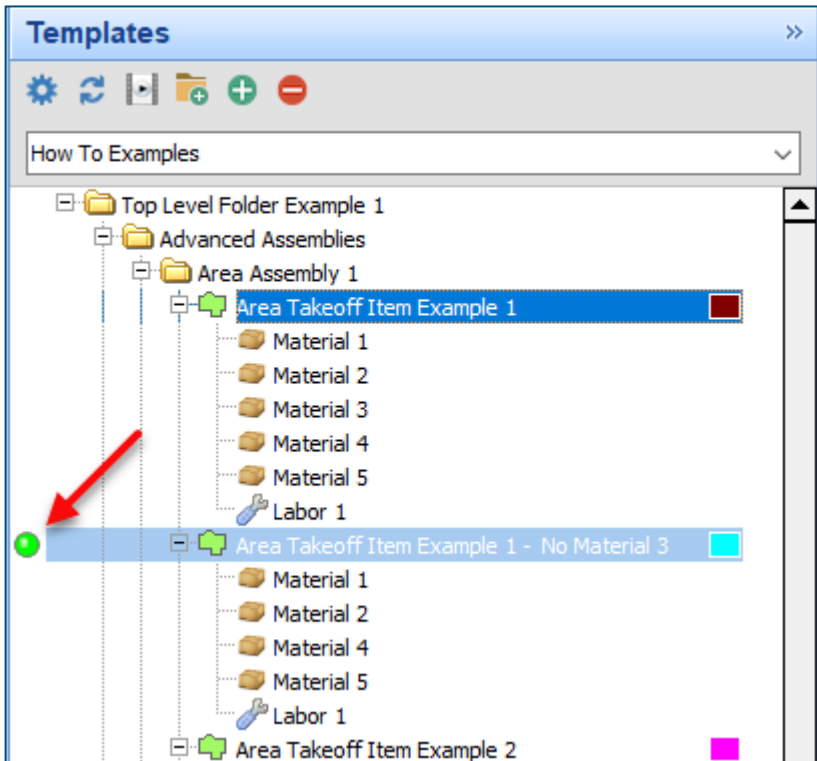


Figure 7

Disclaimer

Any modifications that a user makes to a Starter Pack should always be tested and verified by that user to ensure quantities and calculations are accurate. PlanSwift cannot verify the accuracy of modifications made to templates, parts and assemblies by the user.

How to: Copy and Paste Parts

Copying and pasting parts is handled similarly to copying and pasting an assembly. If, for instance, you want to move **Material 6** in **Area Takeoff Item Example 2** to **Area Takeoff Item Example 1**, click on **Material 6** (arrow 1), then click on copy (arrow 2) as shown in Figure 8.

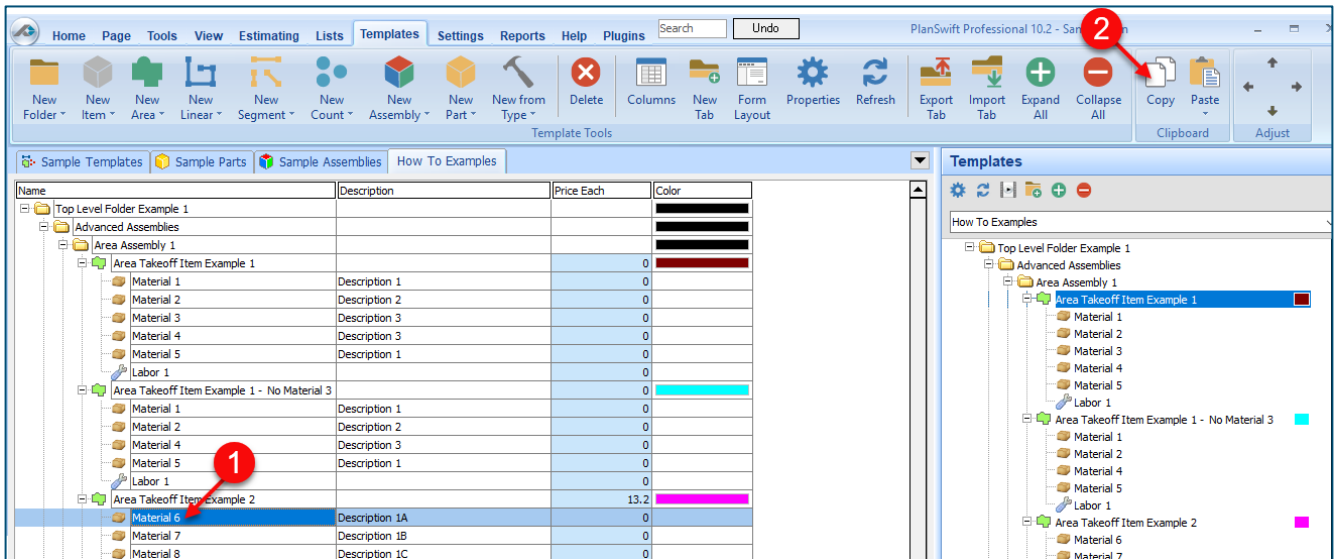


Figure 8

There are now two ways to paste the part. The first is to paste it at the same hierarchical level of a selected item, and the second is to paste it as a sub-item of a selected item. Figure 9 shows the **Paste** button. Clicking on the top half of the button pastes the part at the same hierarchical level of a selected item. Clicking on the drop-down half of the button, then selecting **As Sub-Item** pastes the part as a sub-item of the selected item.

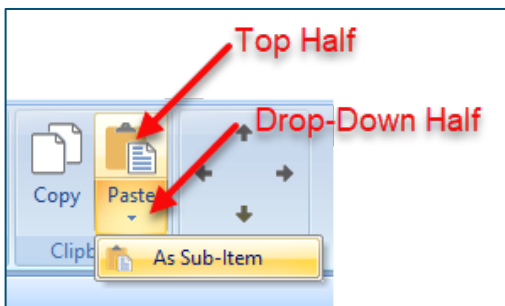


Figure 9

Click on **Area Takeoff Item Example 1**, then click on the top half of **Paste**. As shown in Figure 10, **Material 6** gets pasted at the same hierarchical level as **Area Takeoff Item Example 1**.

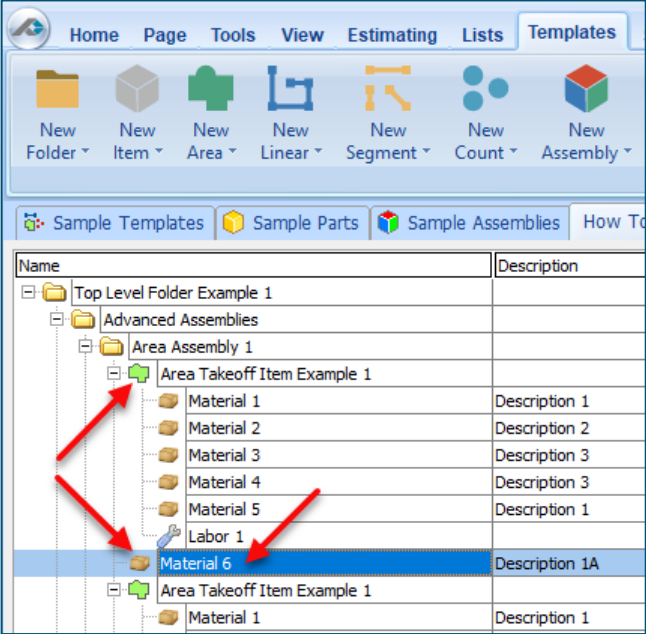


Figure 10

If you had selected the drop-down half of the **Paste** button, then **Material 6** would be a sub-item of **Area Takeoff Item Example 1**. Figure 11 shows **Material 6** as a sub-item.

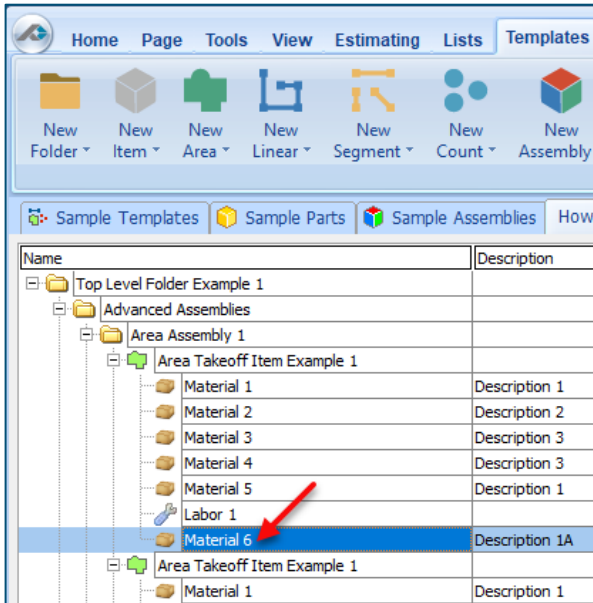


Figure 11

Another way to adjust the hierarchy of an item, such as **Material 6**, is to use the Main Ribbon bar arrow **Adjust** keys (Figure 12).

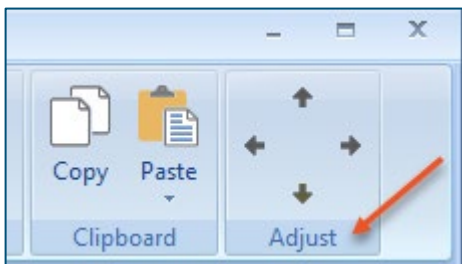


Figure 12

The left and right **Adjust** arrows move the item left and right (up or down) in the hierarchy, and the up and down **Adjust** arrows keys moves the item higher and lower in the list of items.

A shortcut to the **Copy** and **Paste** and **Paste as Sub-Item** selections is available with a right-click menu. Figure 13 shows the **Copy**, **Paste**, and **Paste As Sub-Item** options on the right-click menu when **Material 6** is right-clicked on.

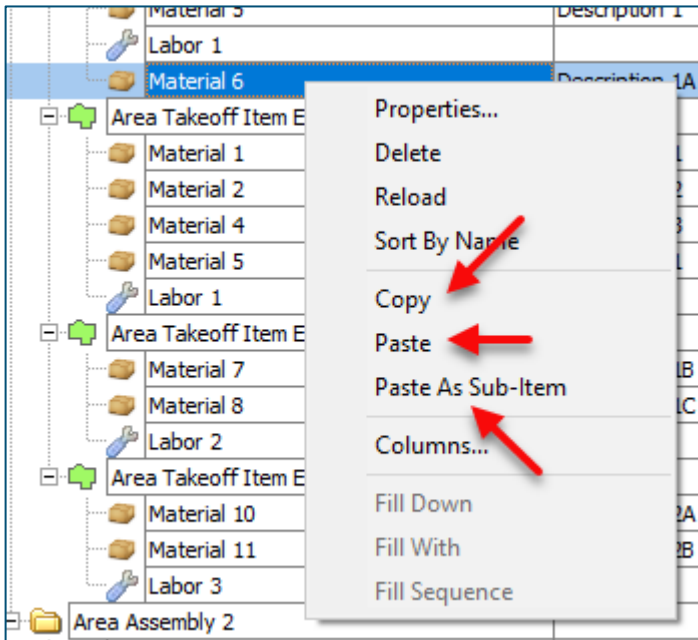


Figure 13

Double-clicking on **Material 6** allows you to change the name of the item and alter other properties of the item (Figure 14). To change the name of **Material 6**, double-click on the **Material 6** name, type the new name, and click on **Ok**.

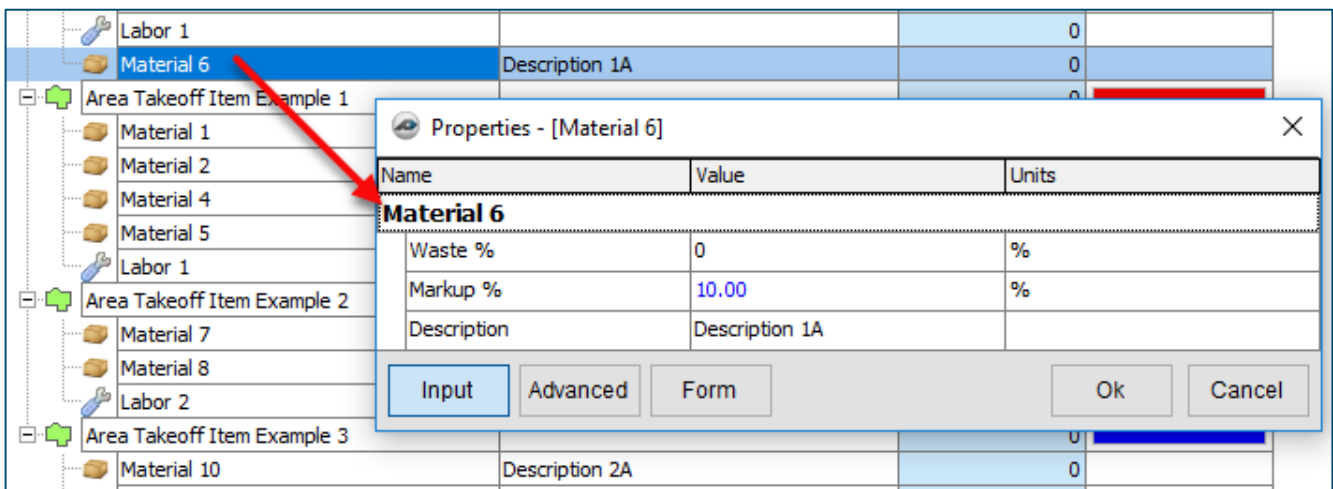
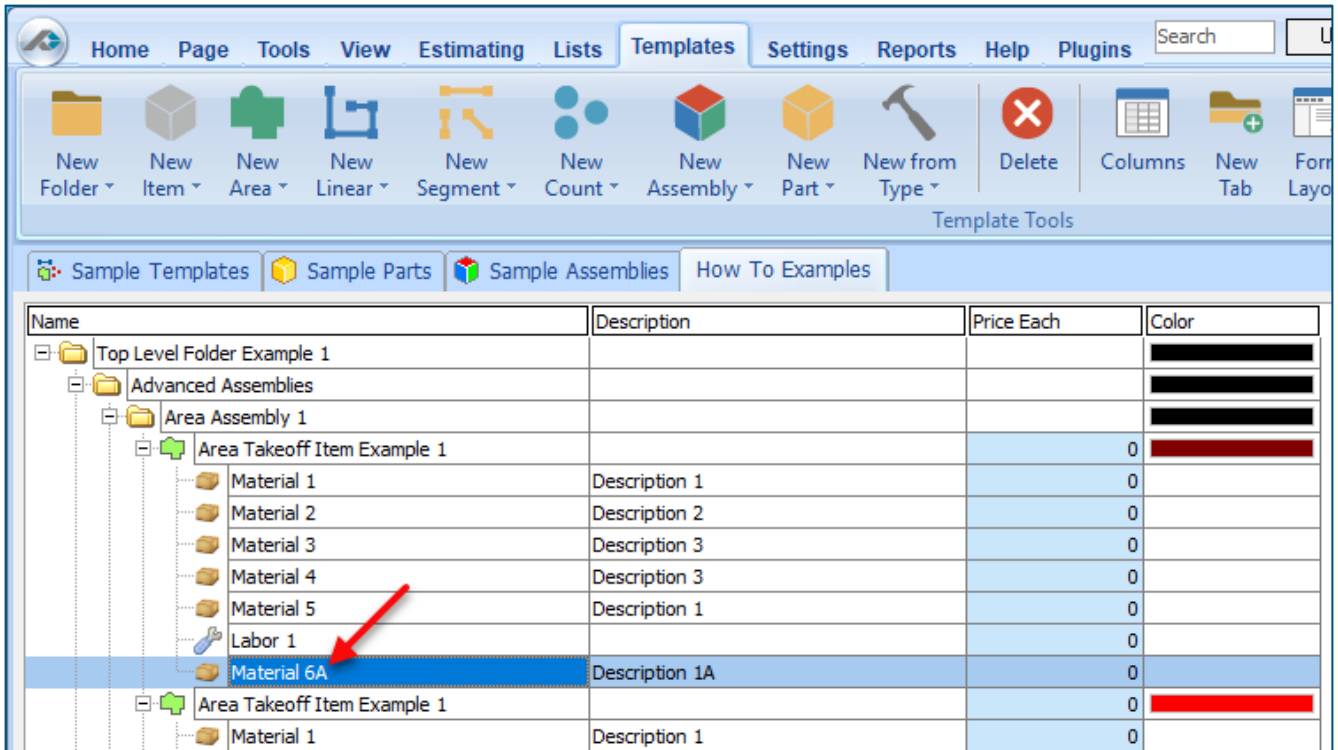


Figure 14

Figure 15 shows **Material 6** renamed to **Material 6A**.



The screenshot shows a software interface with a menu bar (Home, Page, Tools, View, Estimating, Lists, Templates, Settings, Reports, Help, Plugins) and a toolbar with various icons. Below the toolbar is a navigation pane with tabs for 'Sample Templates', 'Sample Parts', 'Sample Assemblies', and 'How To Examples'. The main area displays a table with columns: Name, Description, Price Each, and Color. The table contains a hierarchical tree structure of folders and items. A red arrow points to the row for 'Material 6A'.

Name	Description	Price Each	Color
Top Level Folder Example 1			
Advanced Assemblies			
Area Assembly 1			
Area Takeoff Item Example 1		0	
Material 1	Description 1	0	
Material 2	Description 2	0	
Material 3	Description 3	0	
Material 4	Description 3	0	
Material 5	Description 1	0	
Labor 1		0	
Material 6A	Description 1A	0	
Area Takeoff Item Example 1		0	
Material 1	Description 1	0	

Figure 15

Disclaimer

Any modifications that a user makes to a Starter Pack should always be tested and verified by that user to ensure quantities and calculations are accurate. PlanSwift cannot verify the accuracy of modifications made to templates, parts and assemblies by the user.

How to: Drag and Drop Parts

Parts may be dragged and dropped from one assembly to another assembly. If, for instance, you want to drag the **Material 8** item from **Area Takeoff Item Example 2** up to **Area Takeoff Item Example 1**, click on **Material 8** and drag it up to just below **Material 6A** (see Figure 16) and release the mouse button.

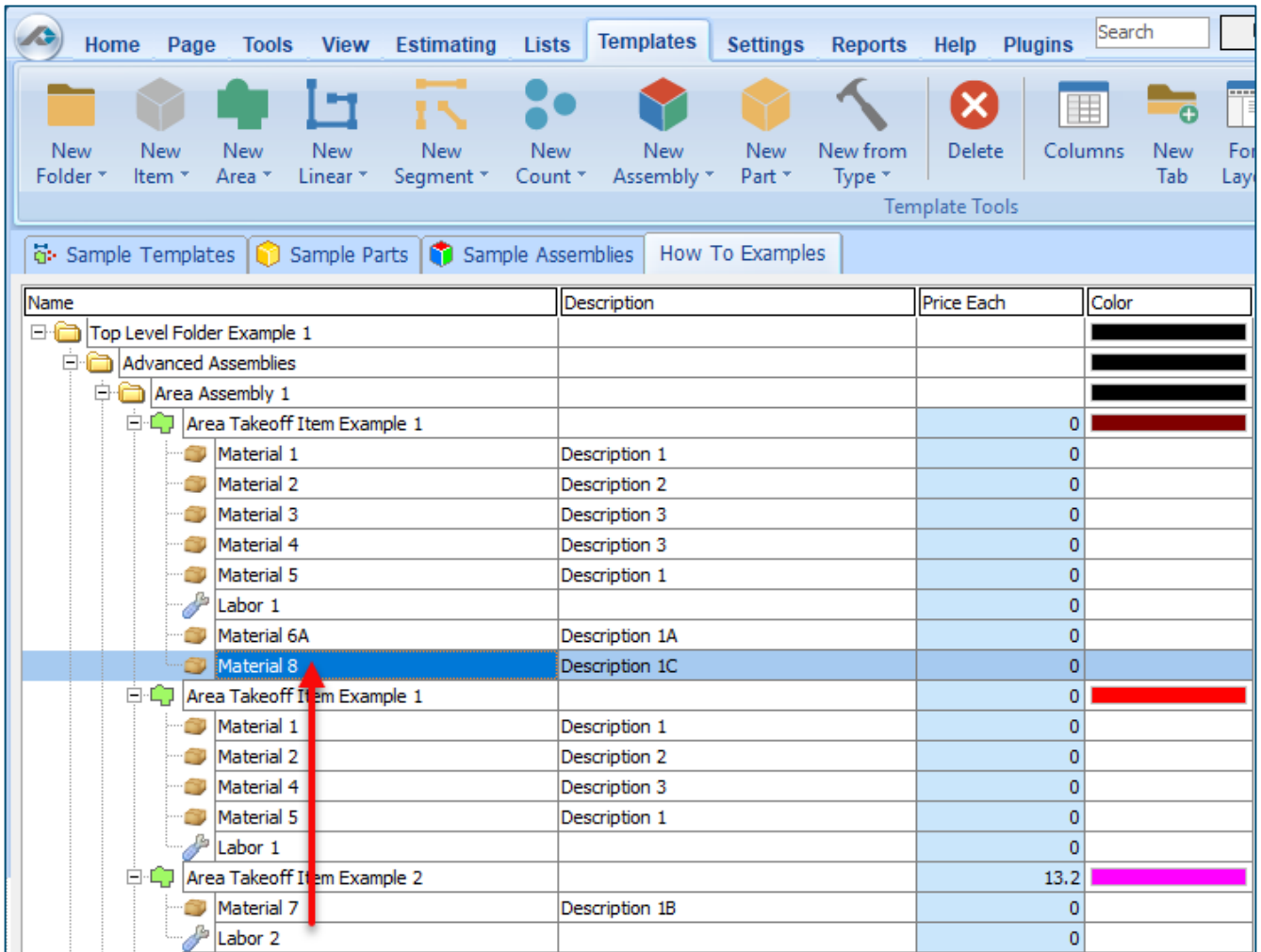


Figure 16

Notice that dragging the part this way *moves* the part from the **Example 2** assembly to the **Example 1** assembly, *not* leaving behind a copy.

The **Templates** sidebar window is a summarized view of everything in the Templates Tab. It is designed for easily dragging and dropping parts and for quickly launching takeoff templates and assemblies.

Parts may be dragged over from the **Templates** sidebar window into the **Templates Tab** window; note that dragging any part from the **Templates** sidebar window makes a copy of it. If, for instance, you want a **Material 7** item added to **Area Takeoff Item Example 1** as a sub-item, simply drag the **Material 7** from the right **Templates** sidebar window over on top of **Area Takeoff Item Example 1** label and release the mouse button. (Figure 17).

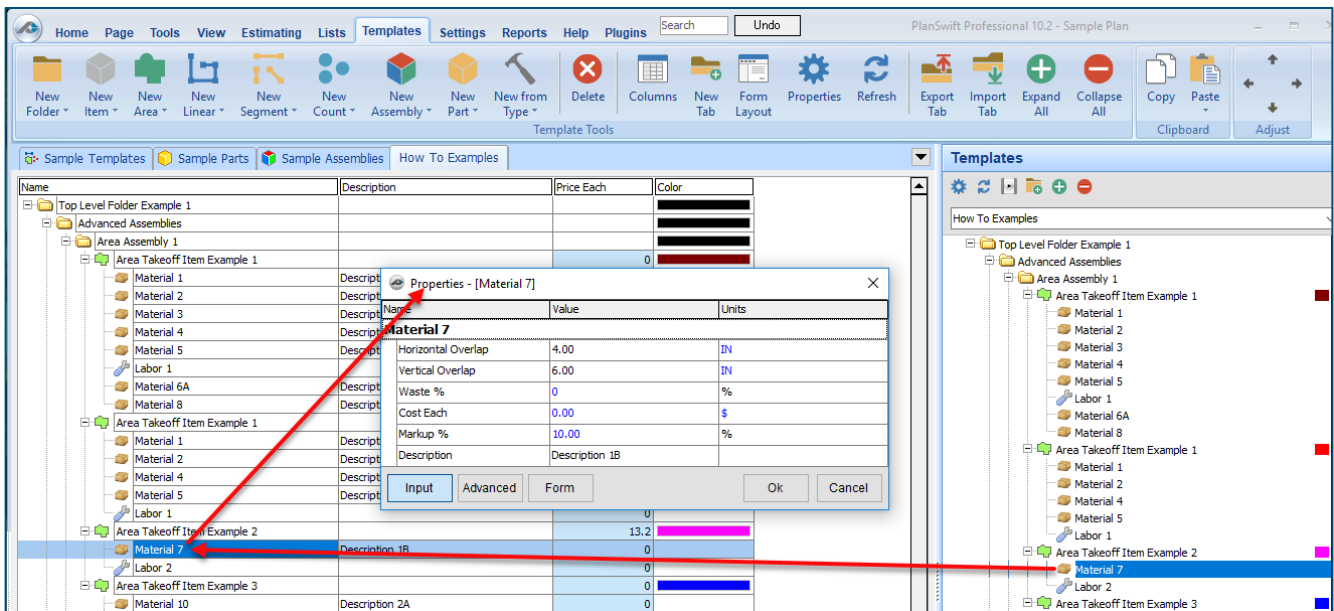


Figure 17

Figure 17 shows the **Material 7** item in place after it was dropped on top of **Area Takeoff Item Example 1**. In addition, the **Properties – [Material 7]** window automatically opens, allowing the user to change any properties for **Material 7**. Click on **Ok** to close the **Properties – [Material 7]** window.

Disclaimer

Any modifications that a user makes to a Starter Pack should always be tested and verified by that user to ensure quantities and calculations are accurate. PlanSwift cannot verify the accuracy of modifications made to templates, parts and assemblies by the user.

FAQ

Question: I've read this user guide, and I still have questions. What do I do?

Answer: PlanSwift recommends that you purchase a training package. We highly recommend new users purchase a training package, because training is customized to each user. We offer [one-on-one training](#) and [classroom training](#). Contact training@PlanSwift.com or at 1-888-752-6794 Ext. 4.

Question: Does the Starter Pack include everything a contractor will need to generate an estimate?

Answer: No. A Starter Pack is a tool to get you started toward creating a complete estimate. For example, the Starter Pack does not include industry pricing for materials and labor. However, you can supply prices for materials and labor on the assemblies and labor included in the Starter Pack.

Question: Do I have to input all the pricing for all my parts?

Answer: Inputting pricing is optional. You can use the Starter Pack to generate quantities that you can then send to your supplier, who can then provide you current pricing. Inputting pricing on your own is optional. If your industry's pricing is not subject to frequent changes, you may want to consider inputting your pricing in PlanSwift.

Compendium

Flooring Assemblies

Name	Description	Type	Color
[-] Carpet and Carpet Tile		Folder	
[-] Basic Assemblies		Folder	
[-] Basic Carpet		Area	
Material	Basic Carpet	Material	
Labor	Basic Carpet	Labor	
[-] Pattern Carpet		Area	
Material	Pattern Carpet	Material	
Labor	Pattern Carpet	Labor	
[-] Carpet Tile		Area	
Material	Carpet Tile	Material	
Labor	Carpet Tile	Labor	
[-] Carpet Edge		Linear	
Material	Carpet Edge	Material	
Labor	Carpet Edge	Labor	
[-] Tile Edge		Linear	
Material	Tile Edge	Material	
Labor	Tile Edge	Labor	
[-] Advanced Assemblies		Folder	
[-] Carpet		Area	
Carpet	12" Width - 0.2" Pile Height - Nylon	Material	
Carpet Pad	20 Sq Yd/Roll - 6Lb Density - 0.5" Thickness	Material	
Carpet Labor		Labor	
[-] Carpet Tile		Area	
Carpet Tile	24" x 24" Nylon Carpet Tile	Material	
Carpet Pad	20 Sq Yd/Roll - 6Lb Density - 0.5" Thickness	Material	
Carpet Tile Labor		Labor	
[-] Wood and Laminate		Folder	
[-] Basic Assemblies		Folder	
[-] Laminate		Area	
Material	Laminate	Material	
Labor	Laminate	Labor	
[-] Engineered Wood		Area	
Material	Engineered Wood	Material	
Labor	Engineered Wood	Labor	
[-] Bamboo		Area	
Material	Bamboo	Material	
Labor	Bamboo	Labor	
[-] Cork Flooring		Area	
Material	Cork Flooring	Material	
Labor	Cork Flooring	Labor	
[-] Baseboard		Linear	
Material	Baseboard	Material	
Labor	Baseboard	Labor	
[-] Advanced Assemblies		Folder	
[-] Hardwood Flooring		Area	
Hardwood Flooring	3/8" T x 6" W Walnut	Material	
Underlayment	15 LB Felt	Material	
Hardwood Labor		Labor	
[-] Laminate		Area	
Laminate	10 MM Maple Textured	Material	
Underlayment	1/8 Inch DITRA	Material	
Laminate Labor	Laminate	Labor	
[-] Eng. Wood Flooring		Area	
Hardwood Flooring	3/8" T x 6" W Engineered Wood	Material	
Underlayment	15 LB Felt	Material	
Hardwood Labor		Labor	

Flooring Assemblies (Cont.)

Name	Description	Type	Color
Tile and Stone		Folder	
Basic Assemblies		Folder	
Stone		Area	
Material	Stone	Material	
Labor	Stone	Labor	
Tile		Area	
Material	Tile	Material	
Labor	Tile	Labor	
Wall Tile		Linear	
Material	Wall Tile	Material	
Labor	Wall Tile	Labor	
2" Tile Base Mudset		Linear	
Material	2" Tile Base Mudset	Material	
Labor	2" Tile Base Mudset	Labor	
5" Tile Base Mudset		Linear	
Material	5" Tile Base Mudset	Material	
Labor	5" Tile Base Mudset	Labor	
2" Tile Base Thinset		Linear	
Material	2" Tile Base Thinset	Material	
Labor	2" Tile Base Thinset	Labor	
5" Tile Base Thinset		Linear	
Material	5" Tile Base Thinset	Material	
Labor	5" Tile Base Thinset	Labor	
Bullnose Trim		Segment	
Material	Bullnose Trim	Material	
Labor	Bullnose Trim	Labor	
Window Sill		Segment	
Material	Window Sill	Material	
Labor	Window Sill	Labor	
Corners		Count	
Material	Corners	Material	
Labor	Corners	Labor	
Advanced Assemblies		Folder	
Floor Tile		Area	
12" x 12" Ceramic Tile		Material	
Tile Grout		Material	
Thin-Set Mortar		Material	
Tile Labor		Labor	
Wall Tile		Linear	
12" x 12" Porcelain Tile		Material	
Tile Grout		Material	
Thin-Set Mortar		Material	
Tile Labor		Labor	
Backsplash		Linear	
4" x 4" Porcelain Tile		Material	
Tile Grout		Material	
Thin-Set Mortar		Material	
Tile Labor		Labor	

Flooring Assemblies (Cont.)

Name	Description	Type	Color
Concrete and Terrazzo		Folder	
Basic Assemblies		Folder	
Acid Stained		Area	
Material	Acid Stained	Material	
Labor	Acid Stained	Labor	
Polished Concrete		Area	
Material	Polished Concrete	Material	
Labor	Polished Concrete	Labor	
Stamped and Polished Concrete		Area	
Material	Stamped and Polished Concrete	Material	
Labor	Stamped and Polished Concrete	Labor	
Granolithic Concrete		Area	
Material	Granolithic Concrete	Material	
Labor	Granolithic Concrete	Labor	
Exposed Aggregate Finish		Area	
Material	Exposed Aggregate Finish	Material	
Labor	Exposed Aggregate Finish	Labor	
Terrazzo		Area	
Material	Terrazzo	Material	
Labor	Terrazzo	Labor	
Acrylic		Area	
Material	Acrylic	Material	
Labor	Acrylic	Labor	
Epoxy		Area	
Material	Epoxy	Material	
Labor	Epoxy	Labor	
Epoxy Terrazzo		Area	
Material	Epoxy Terrazzo	Material	
Labor	Epoxy Terrazzo	Labor	
Mastic		Area	
Material	Mastic	Material	
Labor	Mastic	Labor	
Neoprene		Area	
Material	Neoprene	Material	
Labor	Neoprene	Labor	
Polyacrylate w/ Granite		Area	
Material	Polyacrylate w/ Granite	Material	
Labor	Polyacrylate w/ Granite	Labor	
Polyester w/ Colored Quart 2 Chips		Area	
Material	Polyester w/ Colored Quart 2 Chips	Material	
Labor	Polyester w/ Colored Quart 2 Chips	Labor	
Polyurethane w/ Vinyl Chips		Area	
Material	Polyurethane w/ Vinyl Chips	Material	
Labor	Polyurethane w/ Vinyl Chips	Labor	

Flooring Assemblies (Cont.)

Name	Description	Type	Color
Advanced Assemblies		Folder	
Terrazzo		Area	
Underlayment	15 LB Felt	Material	
Sand	80 Lb Bag	Material	
Mortar	80 Lb Bags	Material	
Aggregate	50 Lb Bag, Natural Marble	Material	
Epoxy	55 Gallon Containers	Material	
Cement	80 Lb Bag	Material	
Sealant	High Gloss Sealer	Material	
Mesh	Fiberglass Wire Mesh	Material	
Labor		Labor	
Polished Concrete		Area	
Pad	100 Grit	Material	
Pad	200 Grit	Material	
Pad	400 Grit	Material	
Pad	800 Grit	Material	
Pad	1,500.00 Grit	Material	
Pad	3,000.00 Grit	Material	
Sealant	High Gloss Sealant	Material	
Polished Concrete Labor		Labor	

Flooring Assemblies (Cont.)

Name	Description	Type	Color
Resilient Flooring (Rubber, Vinyl, Linoleum...)		Folder	
Basic Assemblies		Folder	
2-1/2" High Corner		Count	
Material	2-1/2" High Corner	Material	
Labor	2-1/2" High Corner	Labor	
4" High Corner		Count	
Material	4" High Corner	Material	
Labor	4" High Corner	Labor	
6" High Corner		Count	
Material	6" High Corner	Material	
Labor	6" High Corner	Labor	
Rubber Base		Linear	
Material	Rubber Base	Material	
Labor	Rubber Base	Labor	
Vinyl Base		Linear	
Material	Vinyl Base	Material	
Labor	Vinyl Base	Labor	
Cove Stick		Linear	
Material	Cove Stick	Material	
Labor	Cove Stick	Labor	
Vinyl Flooring		Area	
Material	Vinyl Flooring	Material	
Labor	Vinyl Flooring	Labor	
Vinyl Composition Tile (VCT)		Area	
Material	Vinyl Composition Tile (VCT)	Material	
Labor	Vinyl Composition Tile (VCT)	Labor	
Bio-Based Tile (BBT)		Area	
Material	Bio-Based Tile (BBT)	Material	
Labor	Bio-Based Tile (BBT)	Labor	
Asphalt Tile		Area	
Material	Asphalt Tile	Material	
Labor	Asphalt Tile	Labor	
Rubber Tile		Area	
Material	Rubber Tile	Material	
Labor	Rubber Tile	Labor	
Linoleum		Area	
Material	Linoleum	Material	
Labor	Linoleum	Labor	
Cork Tile		Area	
Material	Cork Tile	Material	
Labor	Cork Tile	Labor	
Rubber Sheet		Area	
Material	Rubber Sheet	Material	
Labor	Rubber Sheet	Labor	
Vinyl Sheet		Area	
Material	Vinyl Sheet	Material	
Labor	Vinyl Sheet	Labor	
Polyvinyl Chloride (PVC)		Area	
Material	Polyvinyl Chloride (PVC)	Material	
Labor	Polyvinyl Chloride (PVC)	Labor	
Polyethylene		Area	
Material	Polyethylene	Material	
Labor	Polyethylene	Labor	
Substrate Prep		Area	
Material	Substrate Prep	Material	
Labor	Substrate Prep	Labor	

Flooring Assemblies (Cont.)

Name	Description	Type	Color
Advanced Assemblies		Folder	Black
Resilient Sheet Flooring		Area	Cyan
Resilient Sheet Flooring	0.25" Thick 4'W x 5'L, Vinyl Sheets	Material	
Adhesive	Liquid Adhesive	Material	
Resilient Flooring Labor	Priced per Hour	Labor	
Resilient Tile Flooring		Area	Red
Resilient Tile Flooring	0.25" Thick 12"W x 12"L, Vinyl Tiles, 15 per Pack	Material	
Adhesive	Liquid Adhesive	Material	
Resilient Flooring Labor	Priced per Hour	Labor	

Flooring Parts

Name	Description	Type	Color
[-] Carpet and Carpet Tile		Folder	██████████
[-] Area Takeoff Parts		Folder	██████████
[-] Carpet Pad	25 Sq Yd/Roll - 4Lb Density - 0.25" Thickness	Material	
[-] Carpet Tile	24.00" x 24.00" Nylon Carpet Tile	Material	
[-] Carpet	12" Width - 0.20" Pile Height - Nylon	Material	
[-] Sq Ft		Material	
[-] Sq Yd		Material	
[-] Pieces		Material	
[-] Rolls		Material	
[-] Sheets		Material	
[-] Gallons		Material	
[-] Fasteners		Material	
[-] Carpet Tile Labor		Labor	
[-] Carpet Labor		Labor	
[-] Sq Ft		Labor	
[-] Sq Yd		Labor	
[-] Hours/Sq Ft		Labor	
[-] Linear Takeoff Parts		Folder	██████████
[-] Lineal Ft		Material	
[-] Sq Ft		Material	
[-] Lengths of Material		Material	
[-] Equally Spaced Items		Material	
[-] Sheets		Material	
[-] Rolls/Ft		Material	
[-] Rolls/Sq FT		Material	
[-] Gallons		Material	
[-] Lineal Ft		Labor	
[-] Sq Ft		Labor	
[-] Lineal Ft-Hours		Labor	
[-] Sq Ft-Hours		Labor	
[-] Count Takeoff Parts		Folder	██████████
[-] Each		Material	
[-] Rectangular Lineal Ft		Material	
[-] Round Lineal Ft		Material	
[-] Rectangular Sq Ft		Material	
[-] Round Sq Ft		Material	
[-] Each		Labor	
[-] Hours		Labor	
[-] Round Lineal Ft		Labor	
[-] Rectangular Sq Ft		Labor	
[-] Round Sq Ft		Labor	

Flooring Parts (Cont.)

Name	Description	Type	Color
[-] Folder Hardwood and Laminate		Folder	██████████
[-] Folder Area Takeoff Parts		Folder	██████████
[-] Hardwood Flooring	3/8" T x 6" W Walnut	Material	
[-] Laminate	10 MM Bamboo Textured	Material	
[-] Cork	6 MM Cork	Material	
[-] Felt	15 LB Felt	Material	
[-] Sq Ft		Material	
[-] Sq Yd		Material	
[-] Pieces		Material	
[-] Laminate		Material	
[-] Rolls		Material	
[-] Sheets		Material	
[-] Gallons		Material	
[-] Fasteners		Material	
[-] Hardwood Labor		Labor	
[-] Laminate Labor		Labor	
[-] HW Flooring Labor		Labor	
[-] Sq Ft		Labor	
[-] Sq Yd		Labor	
[-] Hours/Sq Ft		Labor	
[-] Folder Linear Takeoff Parts		Folder	██████████
[-] Lineal Ft		Material	
[-] Sq Ft		Material	
[-] Lengths of Material		Material	
[-] Equally Spaced Items		Material	
[-] Sheets		Material	
[-] Rolls/Ft		Material	
[-] Rolls/Sq FT		Material	
[-] Gallons		Material	
[-] Fasteners		Material	
[-] Lineal Ft		Labor	
[-] Sq Ft		Labor	
[-] Lineal Ft-Hours		Labor	
[-] Sq Ft-Hours		Labor	
[-] Folder Count Takeoff Parts		Folder	██████████
[-] Each		Material	
[-] Rectangular Lineal Ft		Material	
[-] Round Lineal Ft		Material	
[-] Rectangular Sq Ft		Material	
[-] Round Sq Ft		Material	
[-] Each		Labor	
[-] Hours		Labor	
[-] Round Lineal Ft		Labor	
[-] Rectangular Sq Ft		Labor	
[-] Round Sq Ft		Labor	

Flooring Parts (Cont.)

Name	Description	Type	Color
Tile and Stone		Folder	
Area Takeoff Parts		Folder	
12.00" x 12.00" Ceramic Tile		Material	
Tile Grout		Material	
Thin-Set Mortar		Material	
Sq Ft		Material	
Sq Yd		Material	
Pieces		Material	
Rolls		Material	
Sheets		Material	
Gallons		Material	
Fasteners		Material	
Tile Labor		Labor	
Sq Yd		Labor	
Sq Ft		Labor	
Hours/Sq Ft		Labor	
Linear Takeoff Parts		Folder	
Lineal Ft		Material	
Sq Ft		Material	
Lengths of Material		Material	
Equally Spaced Items		Material	
Sheets		Material	
Rolls/Ft		Material	
Rolls/Sq FT		Material	
Gallons		Material	
Fasteners		Material	
Lineal Ft		Labor	
Sq Ft		Labor	
Lineal Ft-Hours		Labor	
Sq Ft-Hours		Labor	
Count Takeoff Parts		Folder	
Each		Material	
Rectangular Lineal Ft		Material	
Round Lineal Ft		Material	
Rectangular Sq Ft		Material	
Round Sq Ft		Material	
Each		Labor	
Hours		Labor	
Round Lineal Ft		Labor	
Rectangular Sq Ft		Labor	
Round Sq Ft		Labor	

Flooring Parts (Cont.)

Name	Description	Type	Color
Concrete and Terrazzo		Folder	
Area Takeoff Parts		Folder	
Underlayment	15 LB Felt	Material	
Sand	80 Lb Bag	Material	
Mortar	80 Lb Bag	Material	
Aggregate	50 Lb Bag, Natural Marble	Material	
Epoxy	5 Gallon Containers	Material	
Cement	80 Lb Bag	Material	
Sealant	High Gloss Sealant	Material	
Polishing Pad Sets	200 Grit	Material	
Sq Yd		Material	
Sq Ft		Material	
Pieces		Material	
Rolls		Material	
Sheets		Material	
Gallons		Material	
Fasteners		Material	
Terrazzo Labor		Labor	
Polishing Labor		Labor	
Sq Ft		Labor	
Sq Yd		Labor	
Hours/Sq Ft		Labor	
Linear Takeoff Parts		Folder	
Lineal Ft		Material	
Sq Ft		Material	
Lengths of Material		Material	
Equally Spaced Items		Material	
Sheets		Material	
Rolls/Ft		Material	
Rolls/Sq FT		Material	
Gallons		Material	
Fasteners		Material	
Lineal Ft		Labor	
Sq Ft		Labor	
Lineal Ft-Hours		Labor	
Sq Ft-Hours		Labor	
Count Takeoff Parts		Folder	
Each		Material	
Rectangular Lineal Ft		Material	
Round Lineal Ft		Material	
Rectangular Sq Ft		Material	
Round Sq Ft		Material	
Each		Labor	
Hours		Labor	
Round Lineal Ft		Labor	
Rectangular Sq Ft		Labor	
Round Sq Ft		Labor	

Flooring Parts (Cont.)

Name	Description	Type	Color
Resilient Flooring		Folder	
Area Takeoff Parts		Folder	
Resilient Sheet Flooring	0.5" Thick 4'W x 8'L, Rubber Sheets	Material	
Resilient Tile Flooring	0.5" Thick 12"W x 12"L, Rubber Tiles, 15 per Package	Material	
Sq Yd		Material	
Sq Ft		Material	
Pieces		Material	
Adhesive	Liquid Adhesive	Material	
Rolls		Material	
Sheets		Material	
Gallons		Material	
Fasteners		Material	
Resilient Sheet Labor		Labor	
Resilient Tile Labor		Labor	
Sq Ft		Labor	
Sq Yd		Labor	
Hours/Sq Ft		Labor	
Linear Takeoff Parts		Folder	
Vinyl Base		Material	
Vinyl Edge		Material	
Rubber Base		Material	
Metal Edge		Material	
Cove Stick		Material	
Lineal Ft		Material	
Sq Ft		Material	
Lengths of Material		Material	
Equally Spaced Items		Material	
Sheets		Material	
Rolls/Ft		Material	
Rolls/Sq FT		Material	
Gallons		Material	
Fasteners		Material	
Lineal Ft		Labor	
Sq Ft		Labor	
Lineal Ft-Hours		Labor	
Sq Ft-Hours		Labor	
Count Takeoff Parts		Folder	
Each		Material	
Rectangular Lineal Ft		Material	
Round Lineal Ft		Material	
Rectangular Sq Ft		Material	
Round Sq Ft		Material	
Each		Labor	
Hours		Labor	
Round Lineal Ft		Labor	
Rectangular Sq Ft		Labor	
Round Sq Ft		Labor	