

SwiftMaps Plugin

User Guide

UPDATED ON 6/8/2018

PlanSwift

Authored by: Dave Hansen



Table of Contents

Overview	3
Purchasing and Installation	4
Purchasing Plugins.....	4
Installation and Uninstallation	4
Features.....	4
How To	5
How to: Acquire a Google Maps Image to Perform a Takeoff	5
FAQ.....	16

Overview

This guide will teach you how to properly use the tools and features found within the SwiftMaps plugin. It is designed for use with PlanSwift® Takeoff and Estimating Software. This guide is not meant to be a step-by-step “walk through” document, although it can be used as a reference for getting the work done. If you encounter technical difficulty, consult this guide (including the [FAQ](#) section of this user manual) or contact the technical support department at:

PlanSwift® Technical Support
support@PlanSwift.com
1-888-752-6794 ext. 2

PlanSwift also offers additional training. For training options, contact the training department at:

PlanSwift® Training Department
training@PlanSwift.com
1-888-752-6794 ext. 6

Purchasing and Installation

Purchasing Plugins

If you need to purchase PlanSwift or a plugin product, contact the Sales Department at:

PlanSwift® Sales
sales@PlanSwift.com
1-888-752-6794 Ext. 1

Installation and Uninstallation

Installing and uninstalling plugins and starter packs is simple. For installing them, click on the Import Plugin Package icon (arrow 1 in Figure 1) from the PlanSwift Main Ribbon-bar **Plugin** tab (arrow 3 of Figure 1) and follow the prompts from there. For uninstalling, click on the **Uninstall Plugin** (arrow 2 in Figure 1) and follow those prompts.

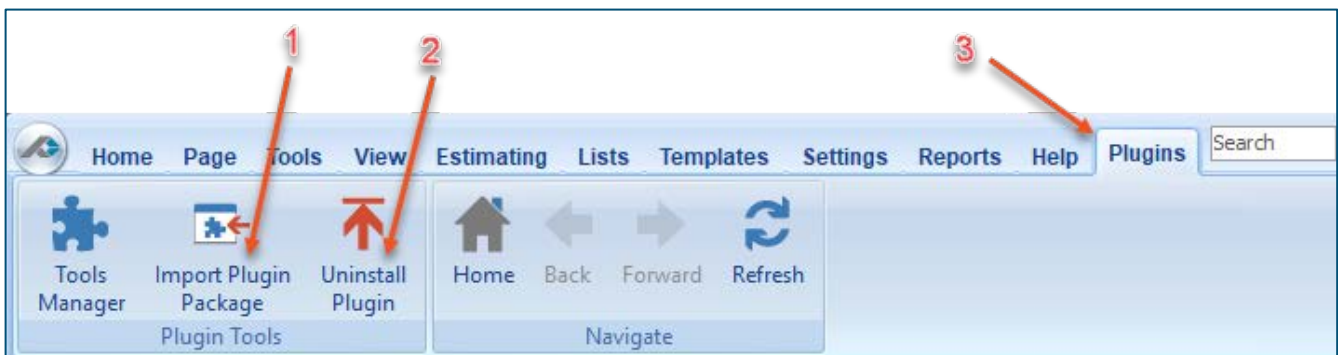


Figure 1

Features

The SwiftMaps plugin allows the user to interact with Google Maps to capture a Google Maps image, automatically scale it, and use the image to perform takeoffs.

The instructions below will guide new users through the steps needed to acquire a Google Maps image so that it can be used for takeoffs.

How To

How to: Acquire a Google Maps Image to Perform a Takeoff

Once SwiftMaps is installed, a **Get Map Image** icon will be visible in the **Job** group of the **Home** ribbon-bar tab (Figure 2).

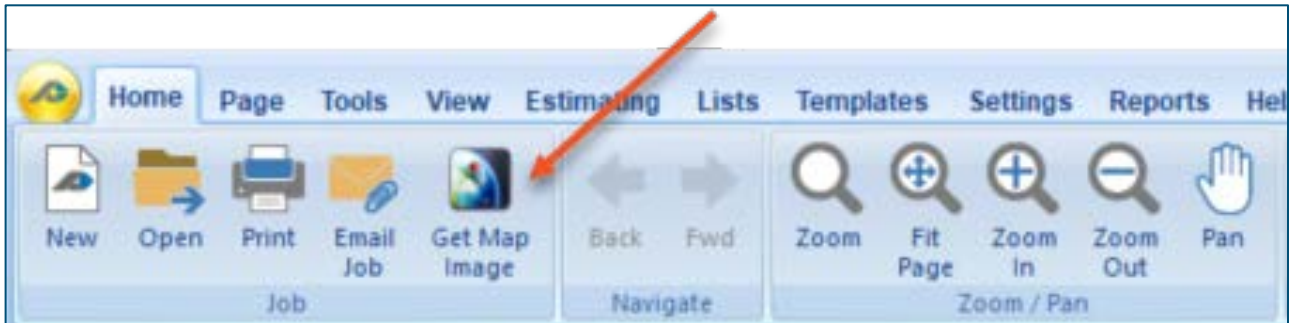


Figure 2

Click on the **Get Map Image** icon; this opens the SwiftMaps world map view (Figure 3).

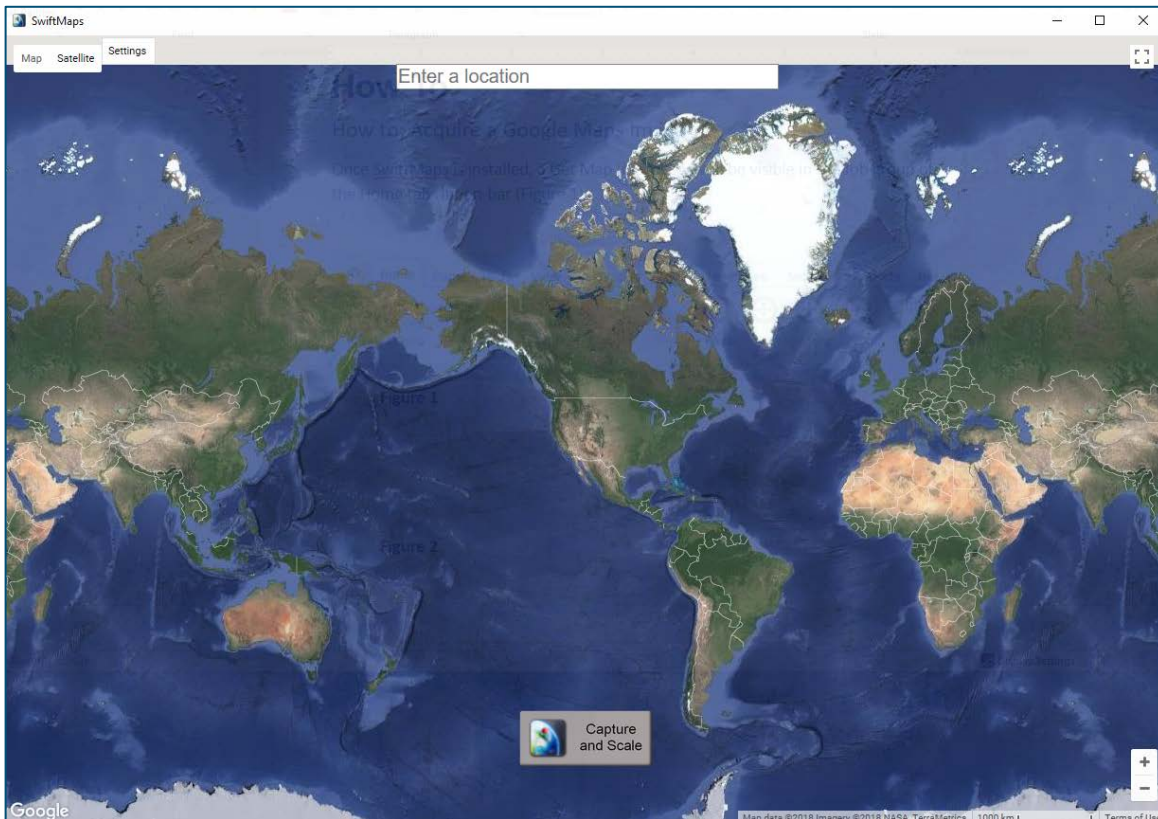


Figure 3

Type in the address of the location for the takeoff in the “Enter a location” field (Figure 4) and press Enter.



Figure 4

This zooms in to display the location (Figure 5).



Figure 5

Several options are available to you through Google Maps. A map with a street view or a satellite view may be selected (see the arrows at 1 on Figure 4). You can now use the mouse to pan and to zoom in or out in order to center in on the area for your takeoff, or you can also use the Google Maps tools, “+” and “-” to zoom (see arrows at 2 on Figure 5) and your keyboard arrow keys to pan. Note that Google Maps provides its own GPS-calculated scaling value (see arrow 3 on Figure 5). When the map image is displaying how you want it, click on the **Capture and Scale** button (arrow 4 of Figure 5).

Disclaimer

The Google Maps GPS-generated scale accuracy is not guaranteed by PlanSwift. Any takeoffs that a user initiates should always be tested and verified by the user to ensure that the scaling is accurate. PlanSwift cannot verify the accuracy of scaling.

If you want to name the page with a timestamp, click on **Use a timestamp**; to give it a name of your choosing, click on **Use a custom value** (Figure 6).



Figure 6

Assuming you chose **Use a custom name**, you are now asked to enter a page name (Figure 7). Click on **Create Page** to create a page in PlanSwift with the name you choose.

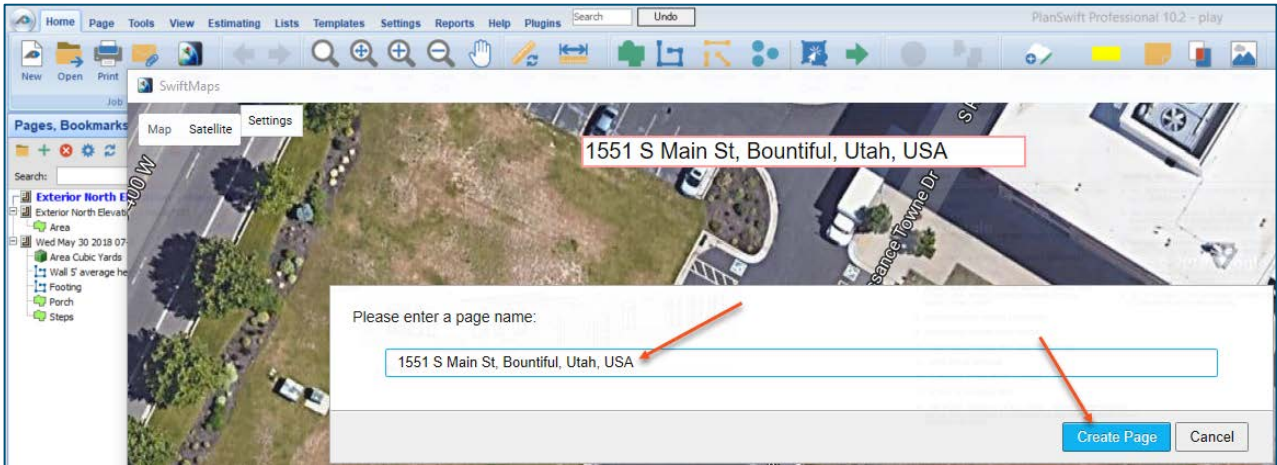


Figure 7

The Google Maps window now closes, the mapped area appears in the PlanSwift main window, and the selected name is listed in the Pages, Bookmarks window (Figure 8).

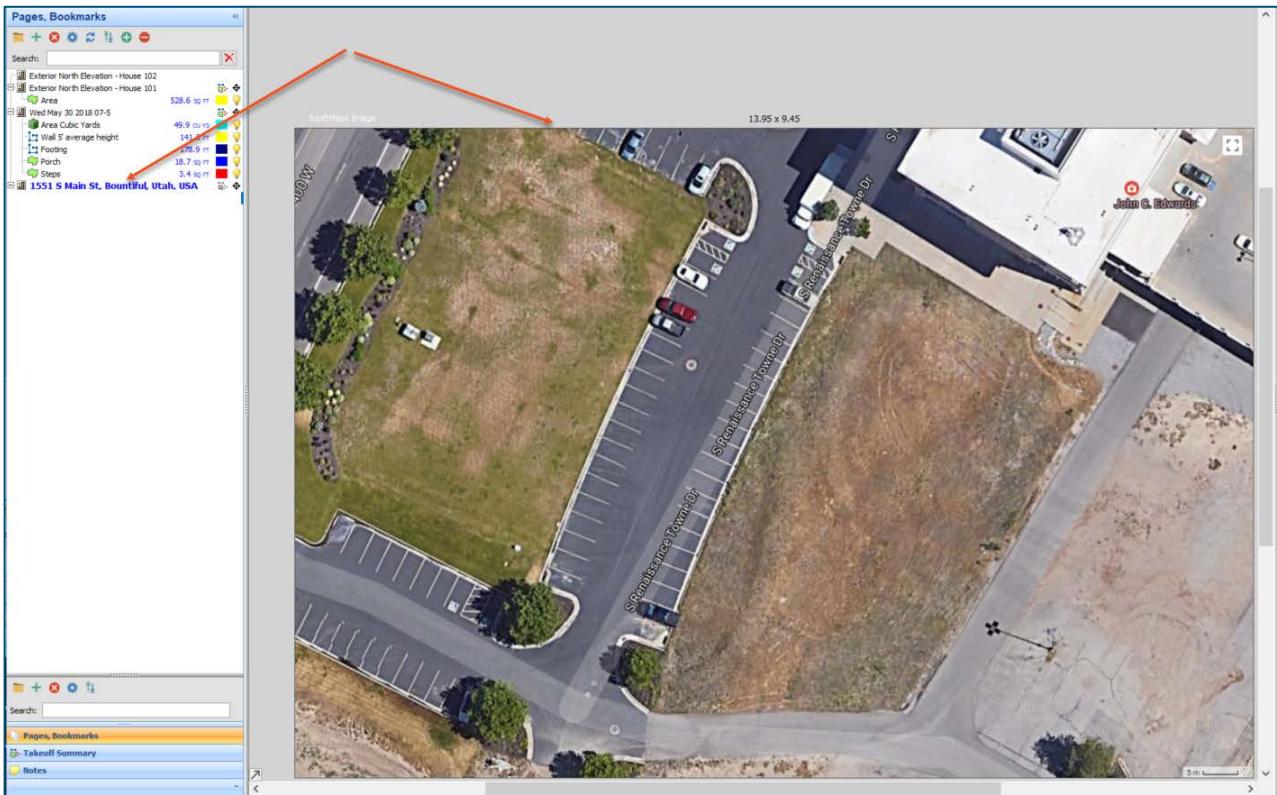


Figure 8

The newly created map page in PlanSwift is also automatically scaled for you using GPS data (see Disclaimer).

Disclaimer

The Google Maps GPS-generated scale accuracy is not guaranteed by PlanSwift. Any takeoffs that a user initiates should always be tested and verified by the user to ensure that the scaling is accurate. PlanSwift cannot verify the accuracy of Google Maps scaling.

To verify the scaling, select a known dimension and click on the **Dimension** tool in the **Measure** group of the PlanSwift **Home** tab ribbon-bar (Figure 9).



Figure 9

After clicking on **Dimension**, the crosshairs appear so you can “Click Next Point” (Figure 10).

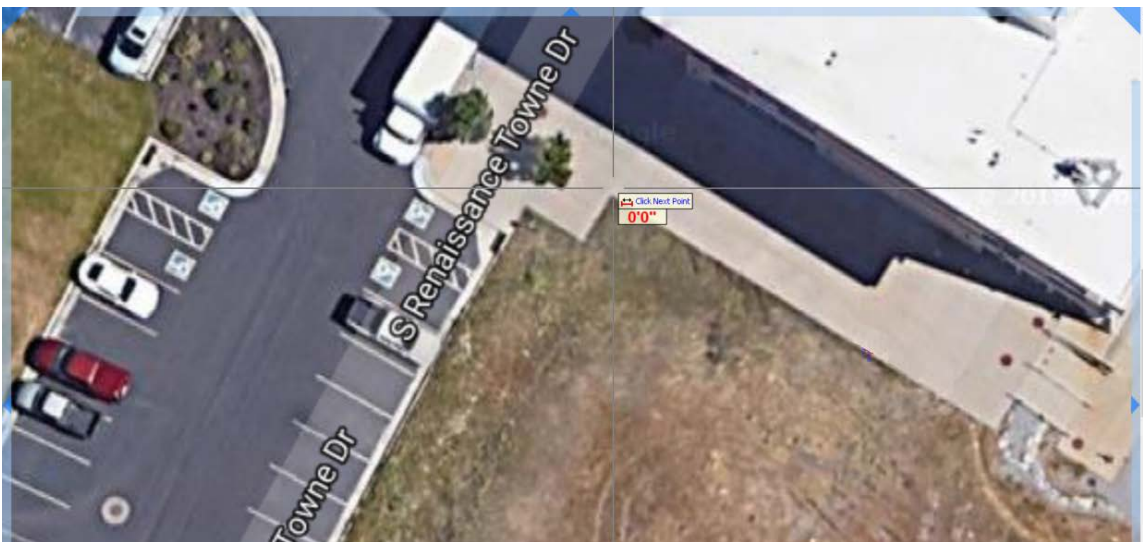


Figure 10

Click on that point, and then click on the second point of the dimension. After you click the second point, press **Esc**, and a double-ended arrow and the dimension will appear (Figure 11). You can now manually (with a tape measure) measure that dimension to ensure that the scaling is correct. A vertical check is also recommended, which is done in the same manner, just using a known vertical dimension.

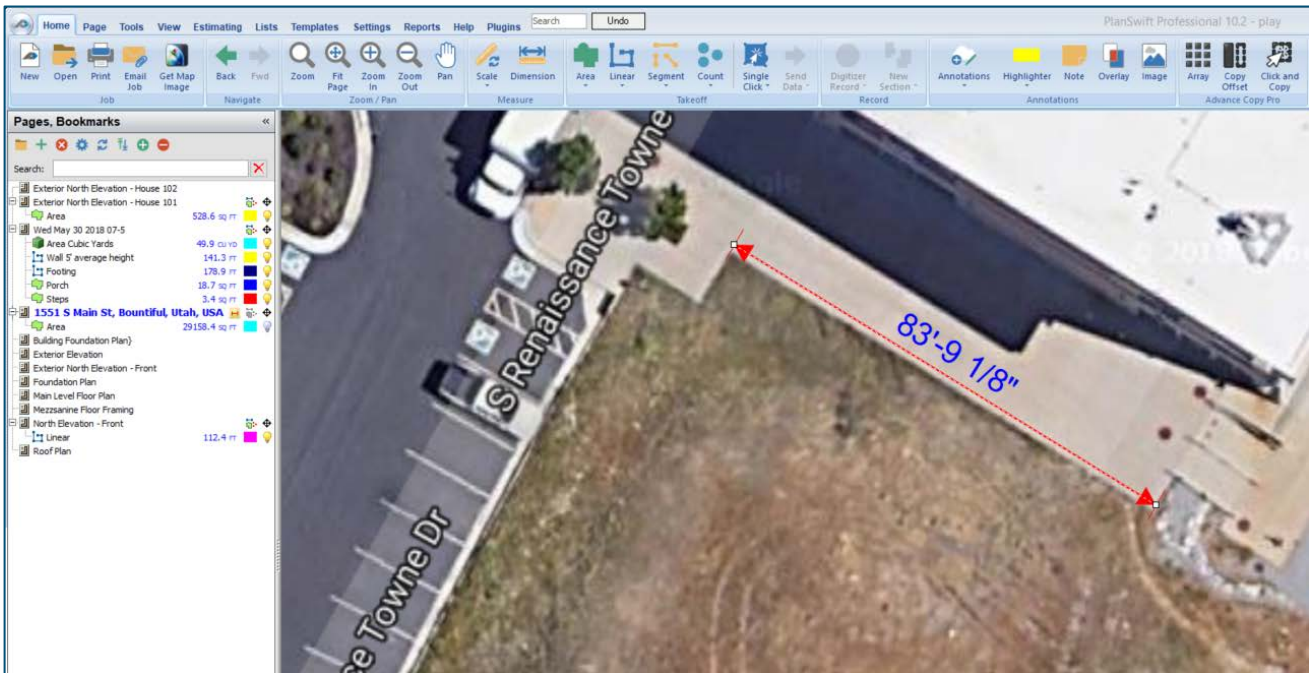


Figure 11

If the dimension does not match the actual measured dimension of the location from Google Maps, then you may want to try to increase the accuracy by manually scaling the image using the dimension tool. (To manually scale the image, the Google Maps GPS scaling will need to be cleared and reset.) In this case, suppose you measured 82'-6" with the tape measure. You now use the **Scale** tool in the **Measure** group of the **Home** ribbon-bar tab to set the scale correctly using the correct measurement.

First you must clear the current scale value: click on the **Scale** tool. This opens the **Scale** window (Figure 12).

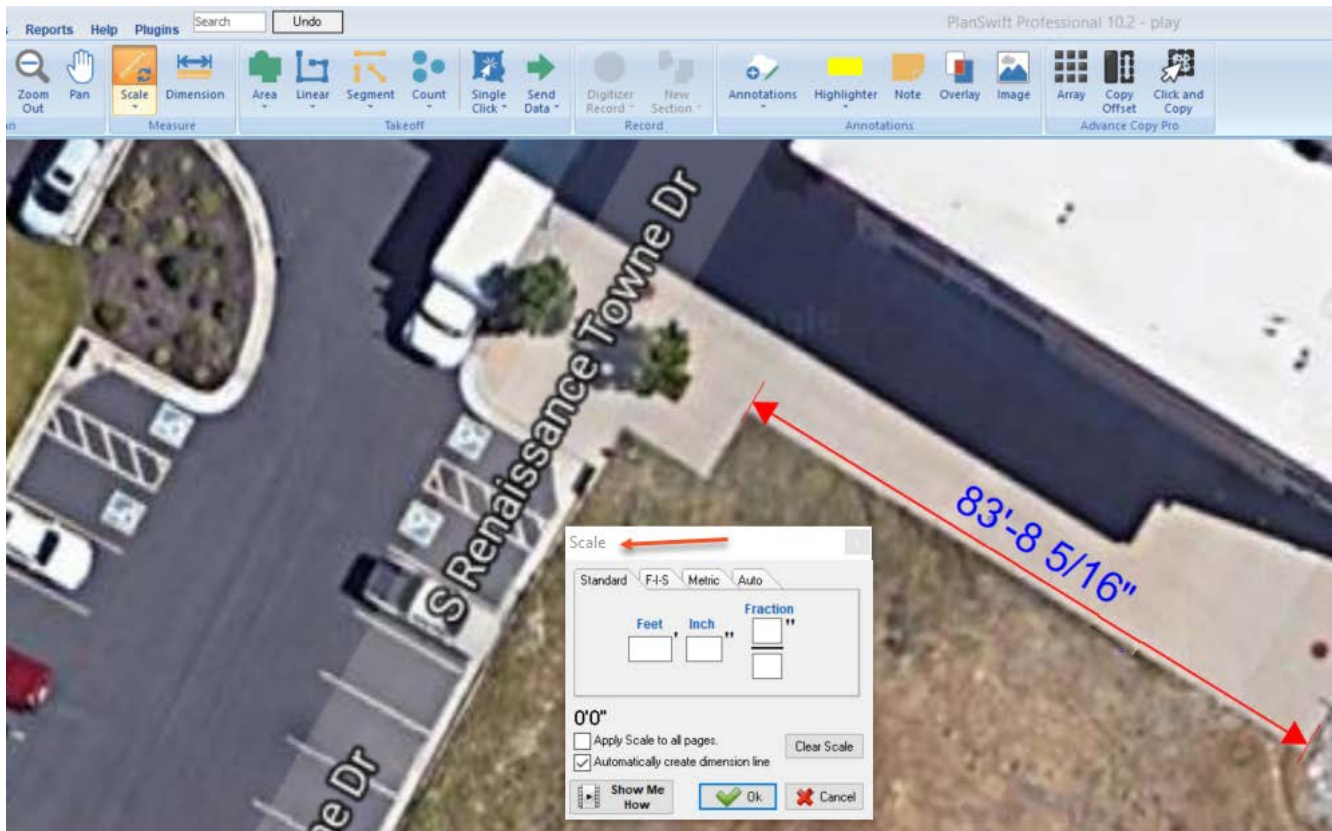


Figure 12

Click on the **Clear Scale** button in the **Scale** window. This clears out the GPS scaled value and closes the **Scale** window. Also click on the red dimension line and delete it too.

Click on the **Scale** tool again and enter **82'-6"** into the **Standard** tab and click on **OK**. The cursor's crosshairs will once again allow you to click on the first point (see Figure 13). Figure 13 shows the **M** hotkey being pressed to magnify the point for more accurate selection.

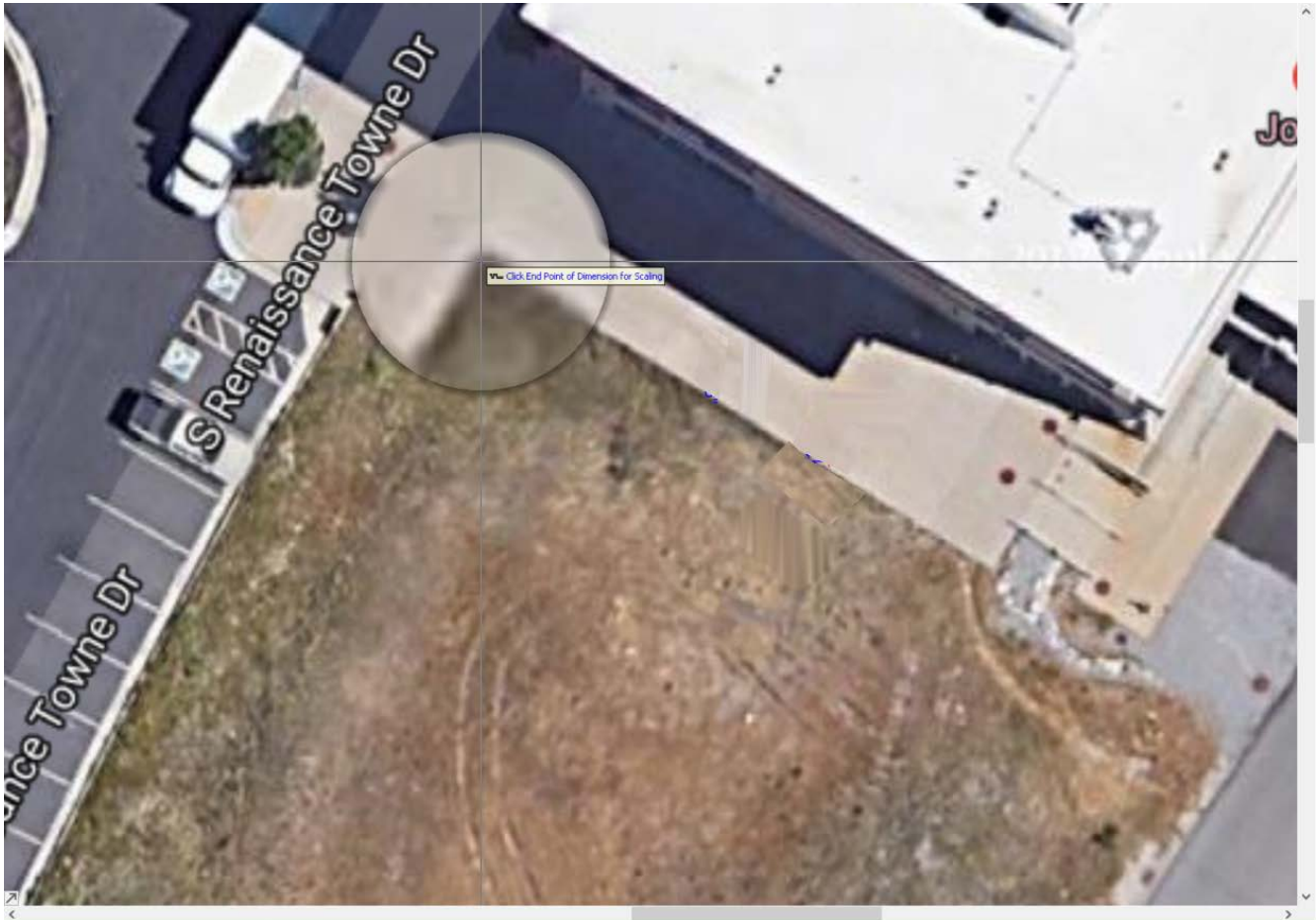


Figure 13

Now click on the second point's location (Figure 14).

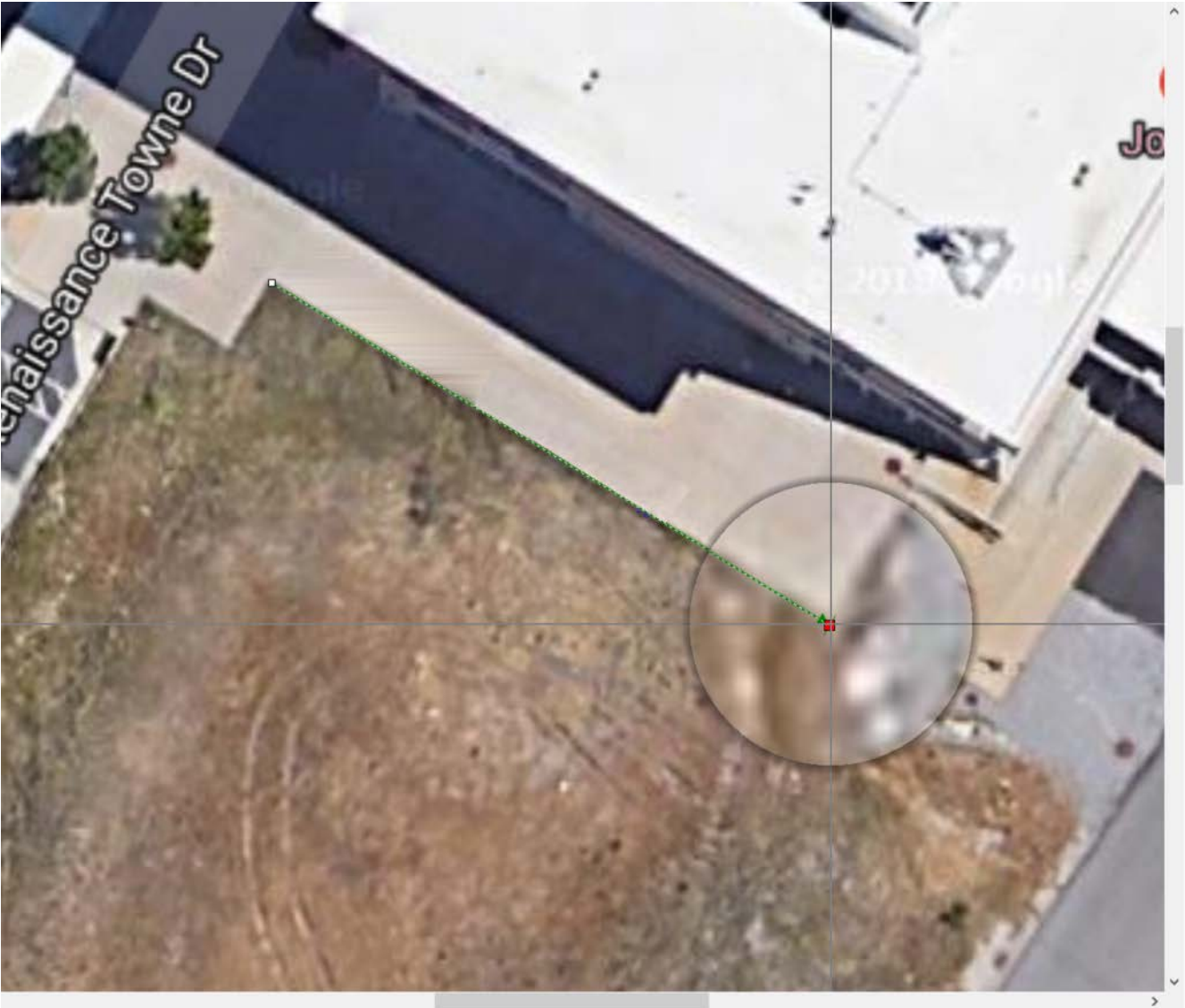


Figure 14

A green scale line will now appear with the correct scaling of 82'-6" (Figure 15).



Figure 15

Once the scaling is verified or completed, the image is ready for a takeoff to be performed (see Figure 16 for an example of an Area takeoff). The area takeoff shown measures 28,587.25 square feet.



Figure 16

If you now click on the **Get Map Image** icon again, it brings you back to the last image where you left off. You can now move to a new portion of the image and capture that image as well, giving it a new name, saving it, and continuing with your takeoffs.

FAQ

Question: I've read this user guide, and I still have questions. What do I do?

Answer: PlanSwift recommends that you purchase a training package. We highly recommend new users purchase a training package, because training is customized to each user. We offer [one-on-one training](#) and [classroom training](#). Contact training@PlanSwift.com or at 1-888-752-6794 Ext. 6.