

Finish Carpentry Starter Pack

User Guide

UPDATED ON 11/21/2018

PlanSwift

Authored by: Dave Hansen



Table of Contents

Overview	3
Purchasing and Installation	4
Purchasing Starter Packs	4
Installation and Uninstallation	4
Features.....	4
How To	5
How to: Copy and Paste an Assembly.....	5
How to: Copy and Paste Parts.....	10
How to: Drag and Drop Parts	15
FAQ.....	17
Compendium.....	18
Finish Carpentry Assemblies	18
Finish Carpentry Parts	23

Overview

This guide will teach you how to properly use the tools and features found within the Finish Carpentry Starter Pack. It is designed for use with PlanSwift® Takeoff and Estimating Software. This guide is not meant to be a step-by-step “walk through” document, although it can be used as a reference for getting the work done. If you encounter technical difficulty, consult this guide (including the [FAQ](#) section of this user manual) or contact the technical support department at:

PlanSwift® Technical Support
support@PlanSwift.com
1-888-752-6794 ext. 2

PlanSwift also offers additional training. For training options, contact the training department at:

PlanSwift® Training Department
training@PlanSwift.com
1-888-752-6794 ext. 4

Purchasing and Installation

Purchasing Starter Packs

If you need to purchase PlanSwift or a Starter Pack product, contact the Sales Department at:

PlanSwift® Sales
sales@PlanSwift.com
1-888-752-6794 Ext. 1

Installation and Uninstallation

Installing and uninstalling starter packs is simple. For installing them, click on the **Import Plugin Package** icon (arrow 1 in Figure 1) from the PlanSwift Main Ribbon-bar **Plugin** tab (arrow 3 of Figure 1) and follow the prompts from there. For uninstalling, click on the Uninstall Plugin (arrow 2 in Figure 1) and follow those prompts.

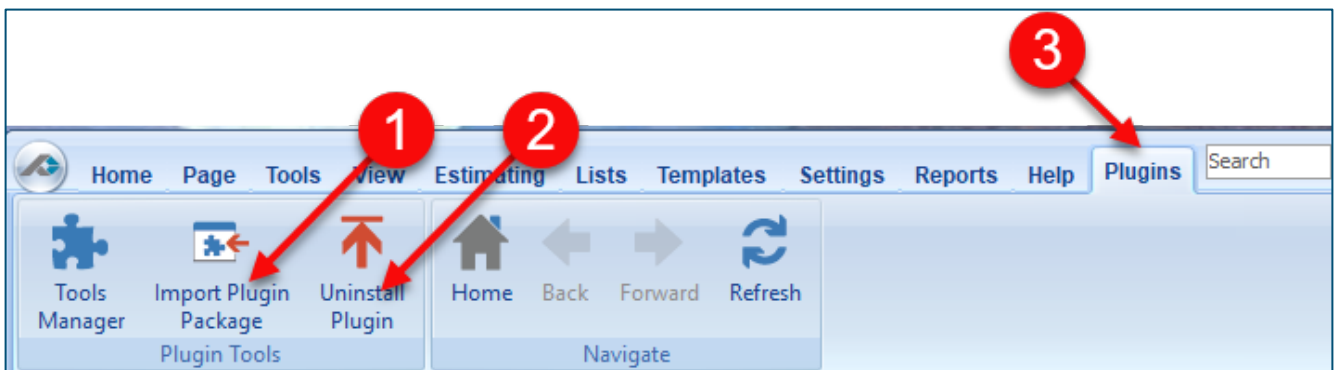


Figure 1

Features

The Finish Carpentry Starter Pack includes the Finish Carpentry Assemblies found in the Templates tab of PlanSwift. These are listed in the [Compendium](#) at the end of this guide. With these finish carpentry assemblies and parts, PlanSwift users can easily customize assemblies and parts for later use. Starter Packs contain a large library of prebuilt templates, parts and assemblies. Modifying the library of parts and assemblies

for any Starter Pack allows users the ability to customize their Templates to their specific needs. Users will save countless hours of setup by utilizing a Starter Pack as their starting point for building custom parts and assemblies. The instructions below will guide new users through the basics of modifying parts and assemblies. We highly recommend purchasing a training package for accelerated learning and faster customization.

How To

How to: Copy and Paste an Assembly

The purpose of copying and pasting an assembly is to allow the user to copy and then modify the assembly for later use. As an example, you may want two different assemblies: one might include a part, and another might have an alternative part or not include that part at all. By copying one assembly and then modifying and renaming the copy (for easy identification), you can have two different assemblies available, allowing for easier and faster takeoffs. Figure 2 shows the **Templates Tab** (arrow 1) and the **Area Takeoff Item Example 1** assembly (arrow 2). If you want to add another assembly but with no **Material 3**, then you would click on the assembly you want to copy (arrow 2), click on **Copy** (arrow 3), and then click on **Paste** (arrow 4).

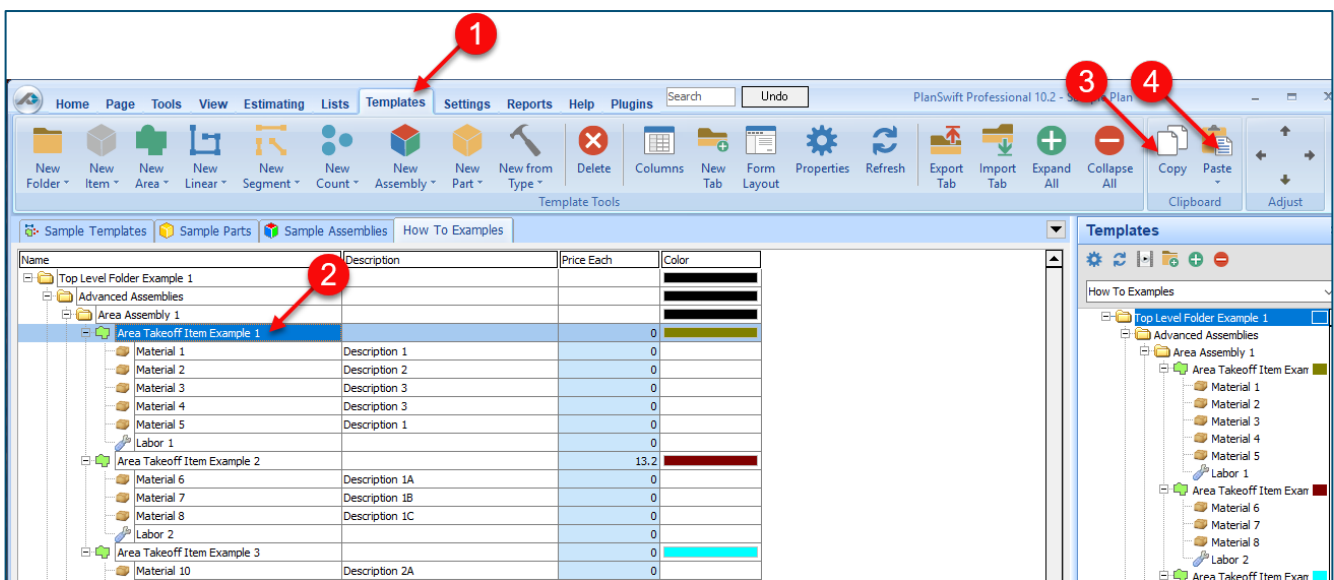


Figure 2

Figure 3 shows the original (arrows 1) and new **Area Takeoff Item Example 1** assembly (arrow 2). To delete the **Material 3** (arrow 3) from the newly created **Area Takeoff Item Example 1** assembly (arrow 2), click on **Material 3** (arrow 3), click on **Delete** (arrow 4), and click on **OK** in the popup window to confirm the deletion.

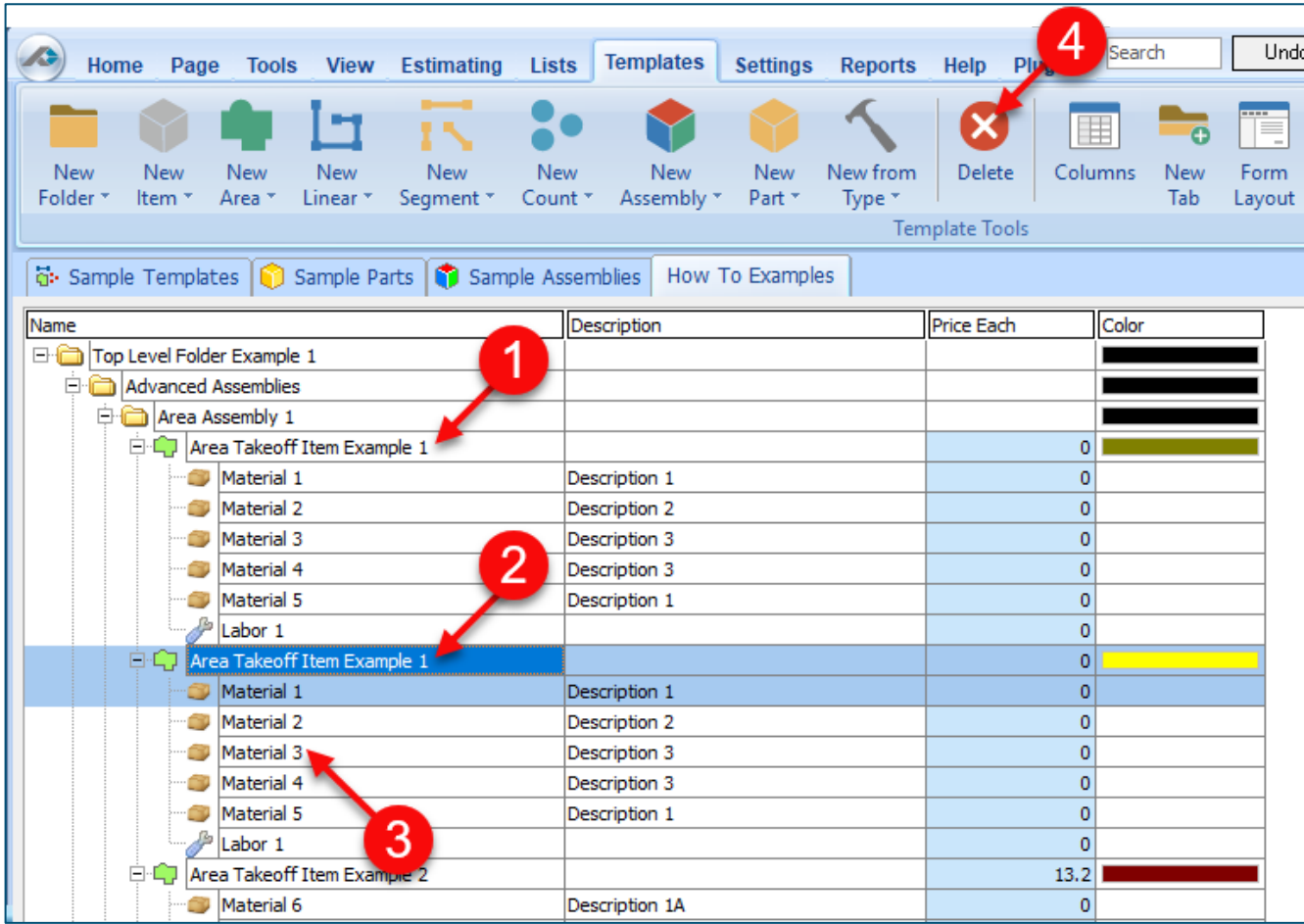


Figure 3

Figure 4 now shows the two assemblies, one with (arrow 1) and one without (arrow 2) the **Material 3** item. You can now change the description of the duplicated **Area Takeoff Item Example 1** (arrow 3) without the **Material 3** item by double-clicking the duplicate **Area Takeoff Item Example 1** (arrow 3).

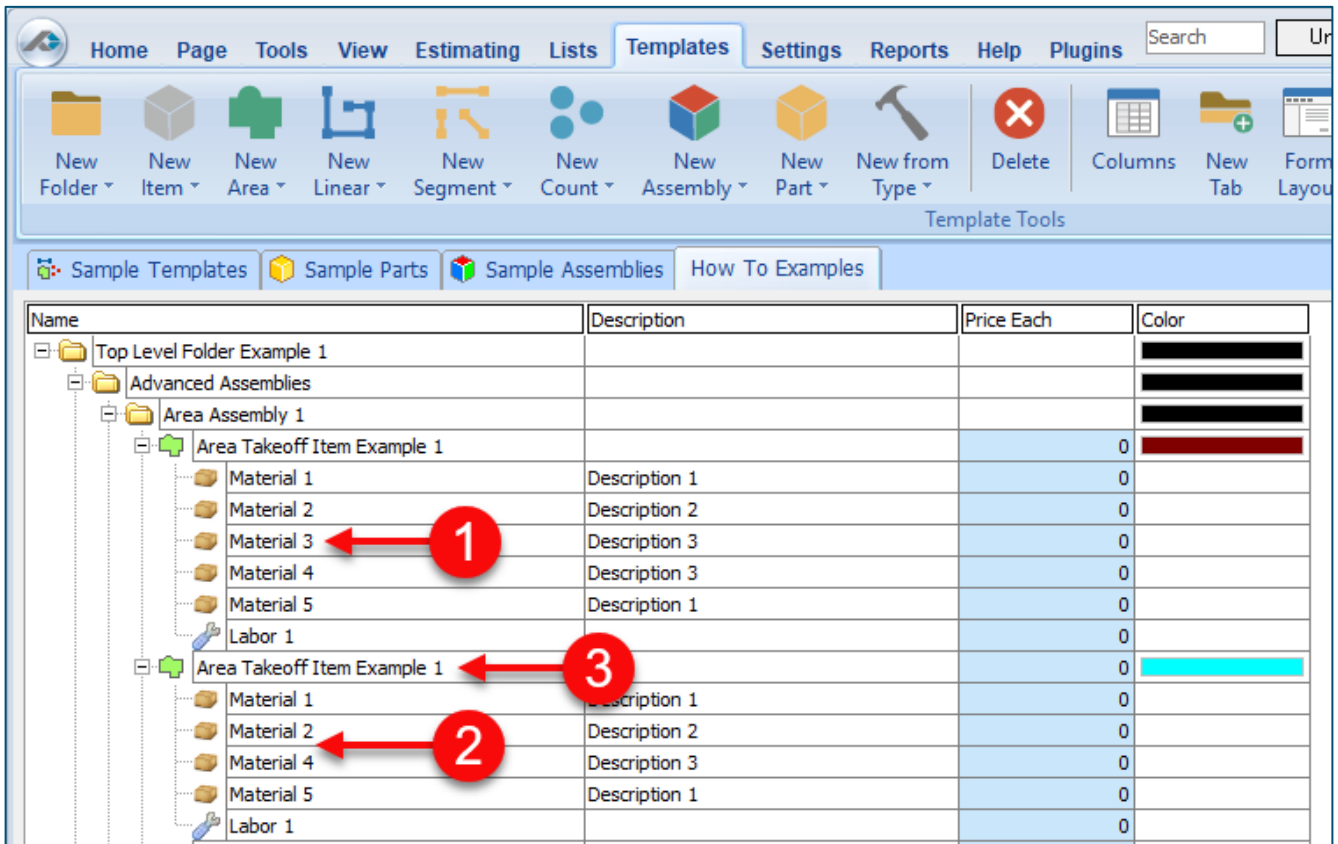


Figure 4

This opens the **Properties – [Area Takeoff Item Example 1]** window (Figure 5) where you can change the assembly’s name to something like **Area Takeoff Item Example 1—No Material 3** to make it easier to identify.

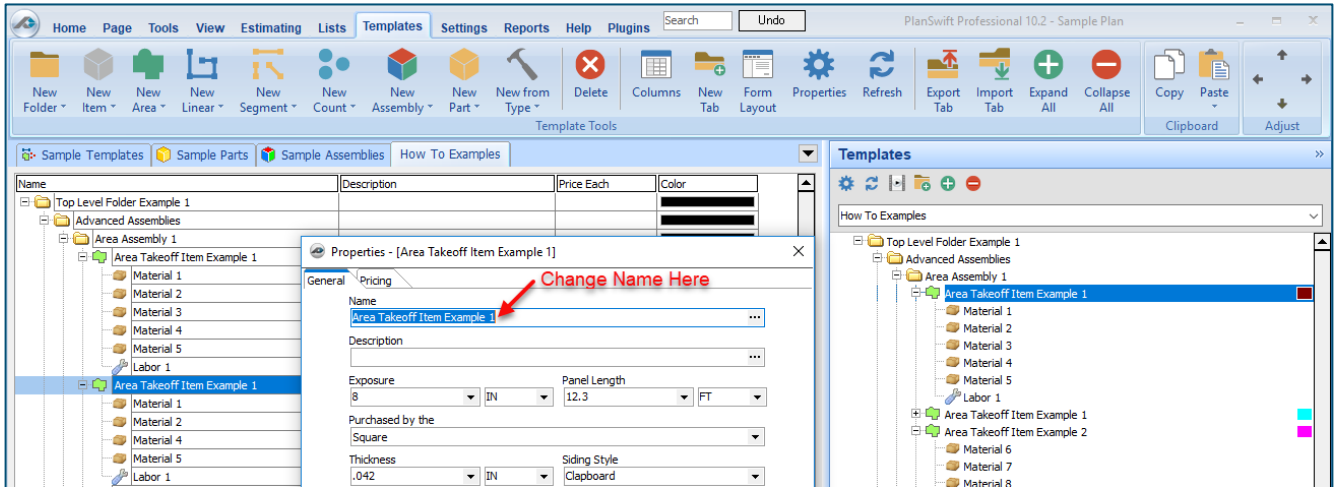


Figure 5

Click on **Ok** in the **Properties** window after you have entered the name. Figure 6 shows the new name.

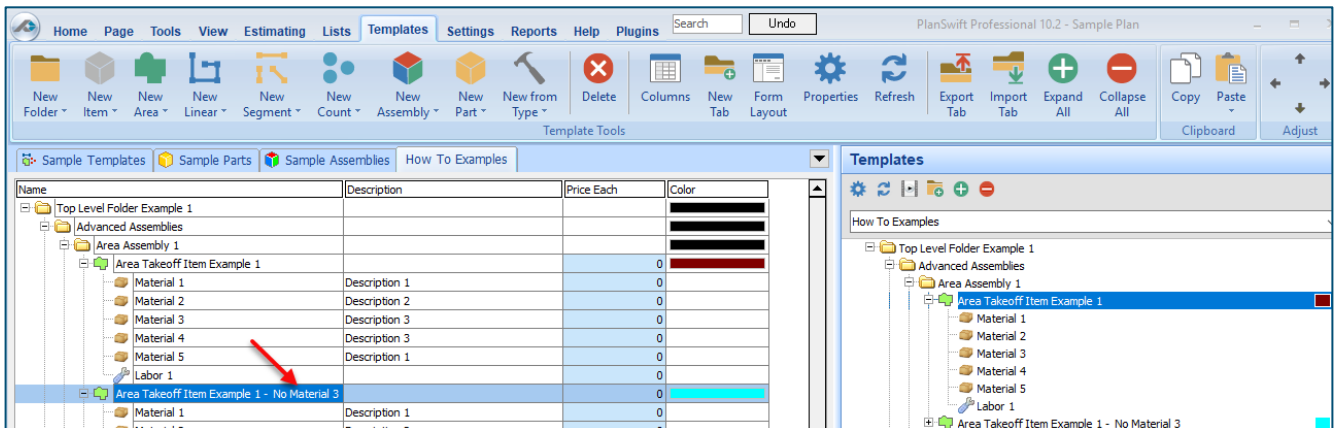


Figure 6

To perform a takeoff with the **Area Takeoff Item Example 1—No Material 3** assembly, go to the takeoff page, click on the green **Record Button** (see the arrow in Figure 7) in the **Templates** sidebar window, and then proceed to do your takeoff.

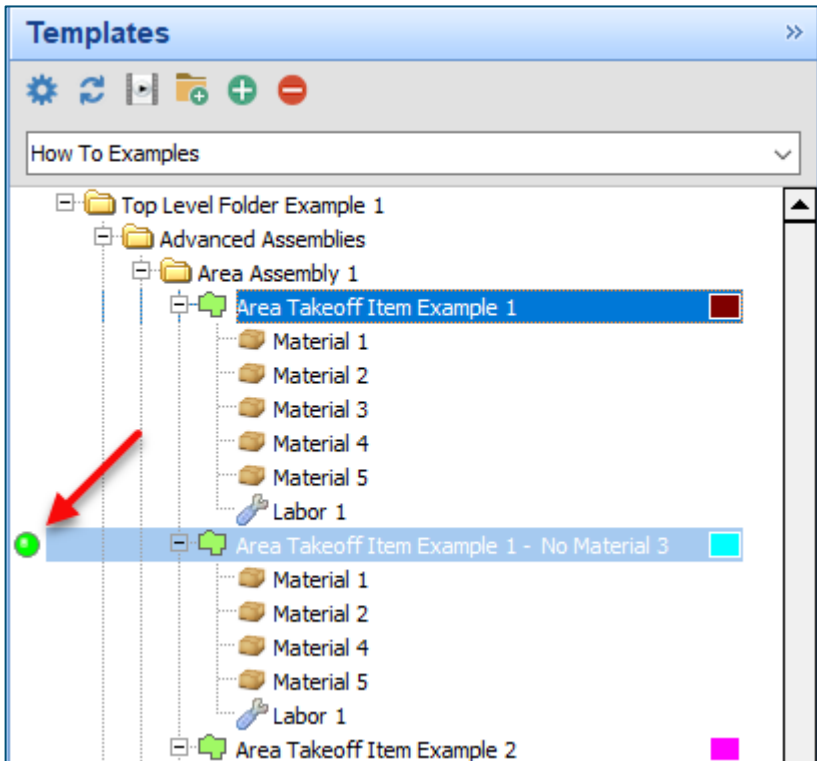


Figure 7

Disclaimer

Any modifications that a user makes to a Starter Pack should always be tested and verified by that user to ensure quantities and calculations are accurate. PlanSwift cannot verify the accuracy of modifications made to templates, parts and assemblies by the user.

How to: Copy and Paste Parts

Copying and pasting parts is handled similarly to copying and pasting an assembly. If, for instance, you want to move **Material 6** in **Area Takeoff Item Example 2** to **Area Takeoff Item Example 1**, click on **Material 6** (arrow 1), then click on copy (arrow 2) as shown in Figure 8.

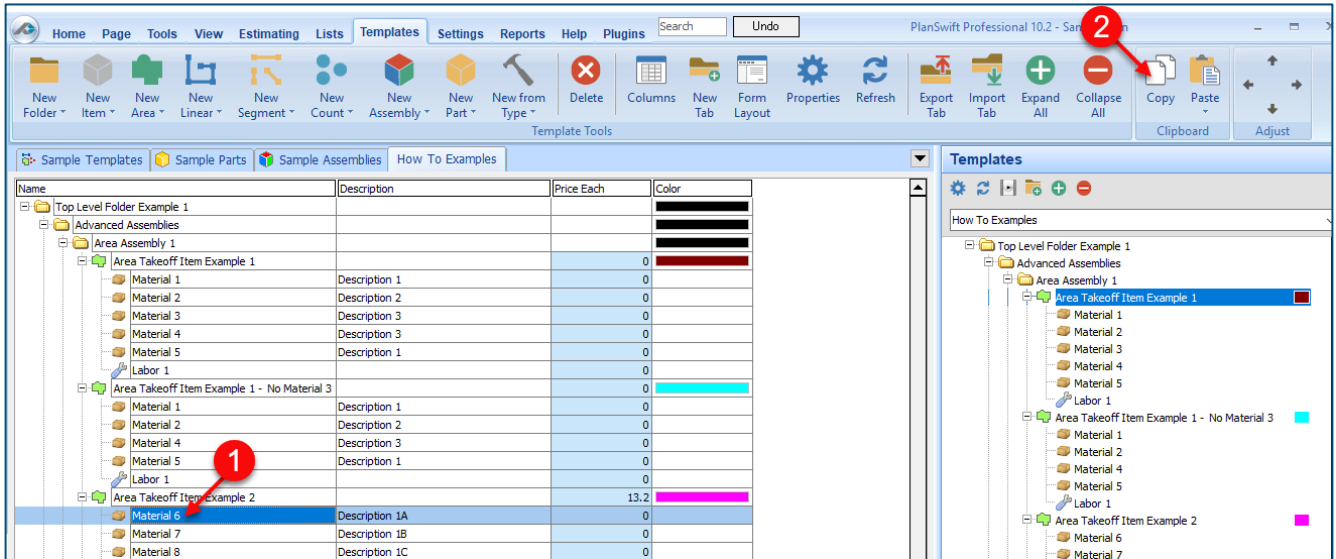


Figure 8

There are now two ways to paste the part. The first is to paste it at the same hierarchical level of a selected item, and the second is to paste it as a sub-item of a selected item. Figure 9 shows the **Paste** button. Clicking on the top half of the button pastes the part at the same hierarchical level of a selected item. Clicking on the drop-down half of the button, then selecting **As Sub-Item** pastes the part as a sub-item of the selected item.

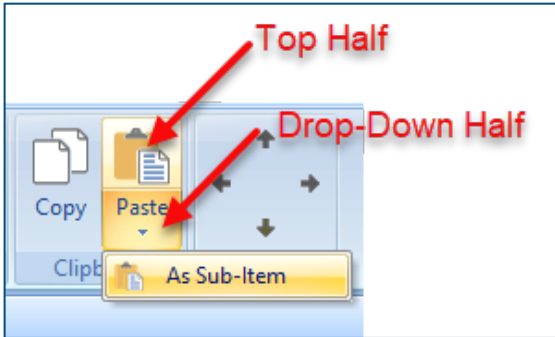


Figure 9

Click on **Area Takeoff Item Example 1**, then click on the top half of **Paste**. As shown in Figure 10, **Material 6** gets pasted at the same hierarchical level as **Area Takeoff Item Example 1**.

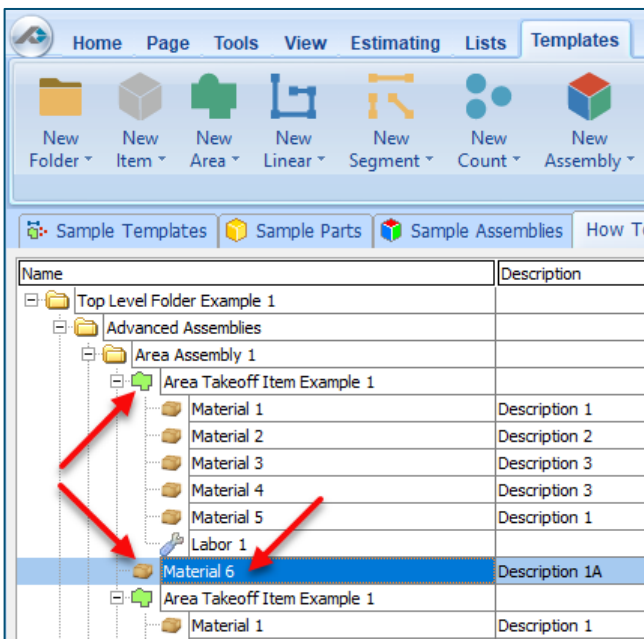


Figure 10

If you had selected the drop-down half of the **Paste** button, then **Material 6** would be a sub-item of **Area Takeoff Item Example 1**. Figure 11 shows **Material 6** as a sub-item.

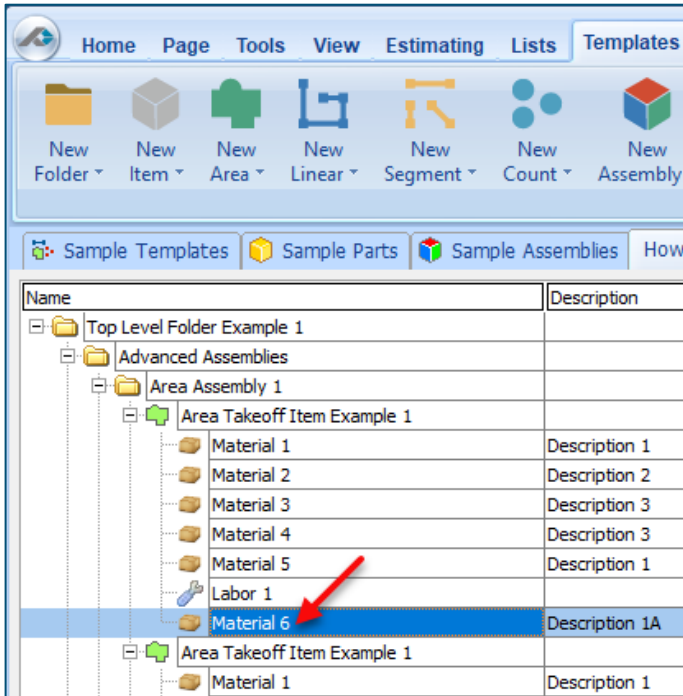


Figure 11

Another way to adjust the hierarchy of an item, such as **Material 6**, is to use the Main Ribbon bar arrow **Adjust** keys (Figure 12).

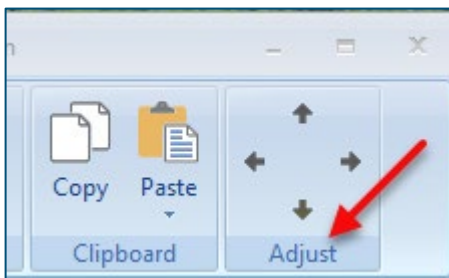


Figure 12

The left and right **Adjust** arrows move the item left and right (up or down) in the hierarchy, and the up and down **Adjust** arrows keys moves the item higher and lower in the list of items.

A shortcut to the **Copy** and **Paste** and **Paste as Sub-Item** selections is available with a right-click menu. Figure 13 shows the **Copy**, **Paste**, and **Paste As Sub-Item** options on the right-click menu when **Material 6** is right-clicked on.

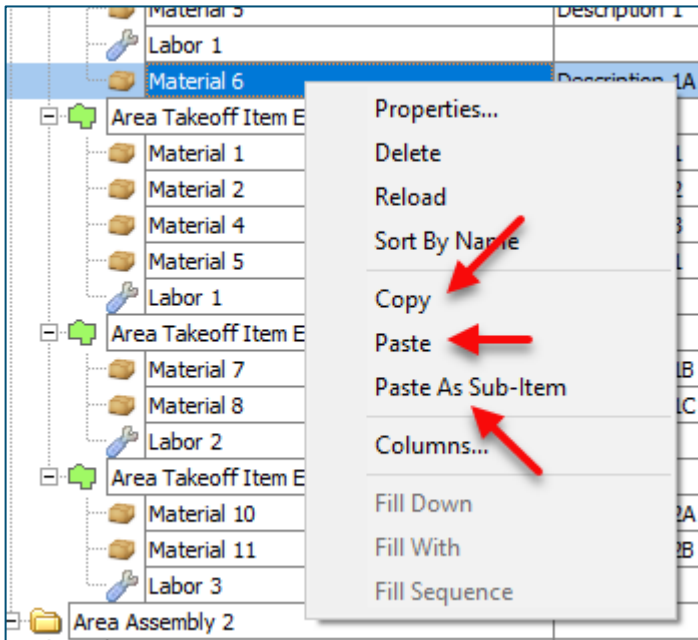


Figure 13

Double-clicking on **Material 6** allows you to change the name of the item and alter other properties of the item (Figure 14). To change the name of **Material 6**, double-click on the **Material 6** name, type the new name, and click on **Ok**.

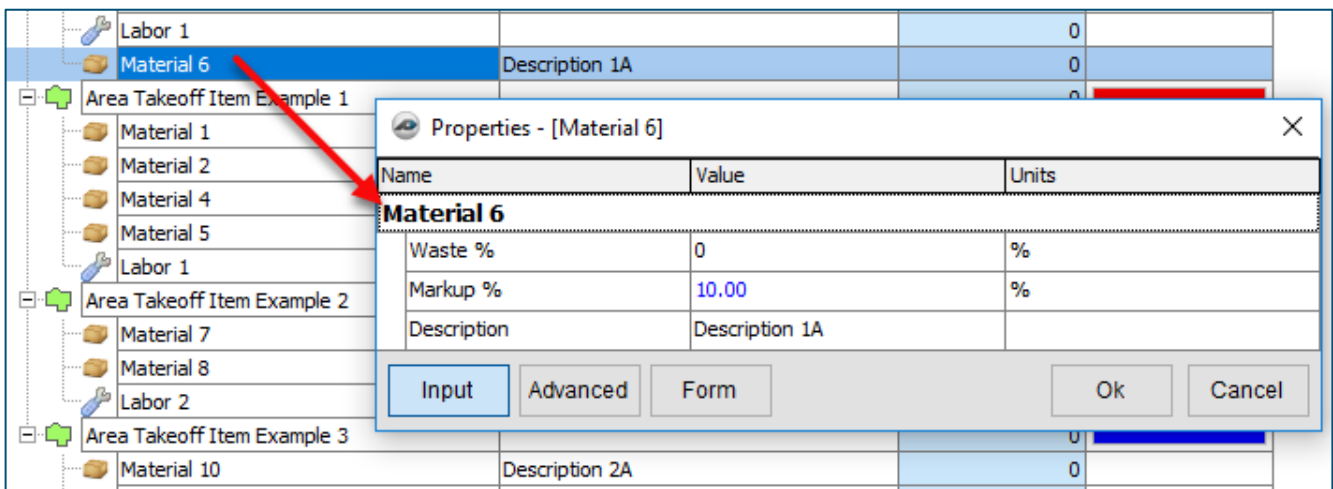
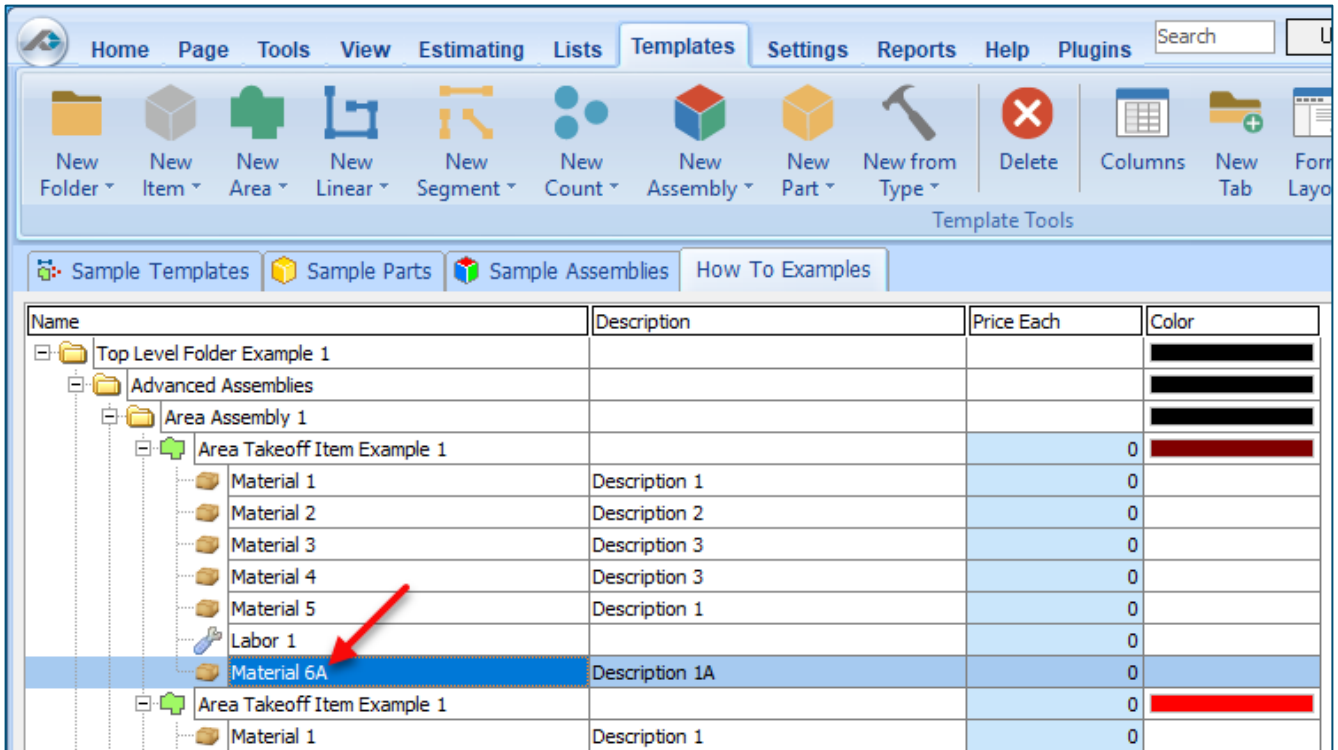


Figure 14

Figure 15 shows **Material 6** renamed to **Material 6A**.



The screenshot shows a software interface with a menu bar (Home, Page, Tools, View, Estimating, Lists, Templates, Settings, Reports, Help, Plugins) and a toolbar with various icons. Below the toolbar is a navigation pane with tabs for 'Sample Templates', 'Sample Parts', 'Sample Assemblies', and 'How To Examples'. The main area displays a table with columns: Name, Description, Price Each, and Color. The table contains a hierarchical tree structure of folders and items. A red arrow points to the row for 'Material 6A'.

Name	Description	Price Each	Color
Top Level Folder Example 1			
Advanced Assemblies			
Area Assembly 1			
Area Takeoff Item Example 1		0	
Material 1	Description 1	0	
Material 2	Description 2	0	
Material 3	Description 3	0	
Material 4	Description 3	0	
Material 5	Description 1	0	
Labor 1		0	
Material 6A	Description 1A	0	
Area Takeoff Item Example 1		0	
Material 1	Description 1	0	

Figure 15

Disclaimer

Any modifications that a user makes to a Starter Pack should always be tested and verified by that user to ensure quantities and calculations are accurate. PlanSwift cannot verify the accuracy of modifications made to templates, parts and assemblies by the user.

How to: Drag and Drop Parts

Parts may be dragged and dropped from one assembly to another assembly. If, for instance, you want to drag the **Material 8** item from **Area Takeoff Item Example 2** up to **Area Takeoff Item Example 1**, click on **Material 8** and drag it up to just below **Material 6A** (see Figure 16) and release the mouse button.

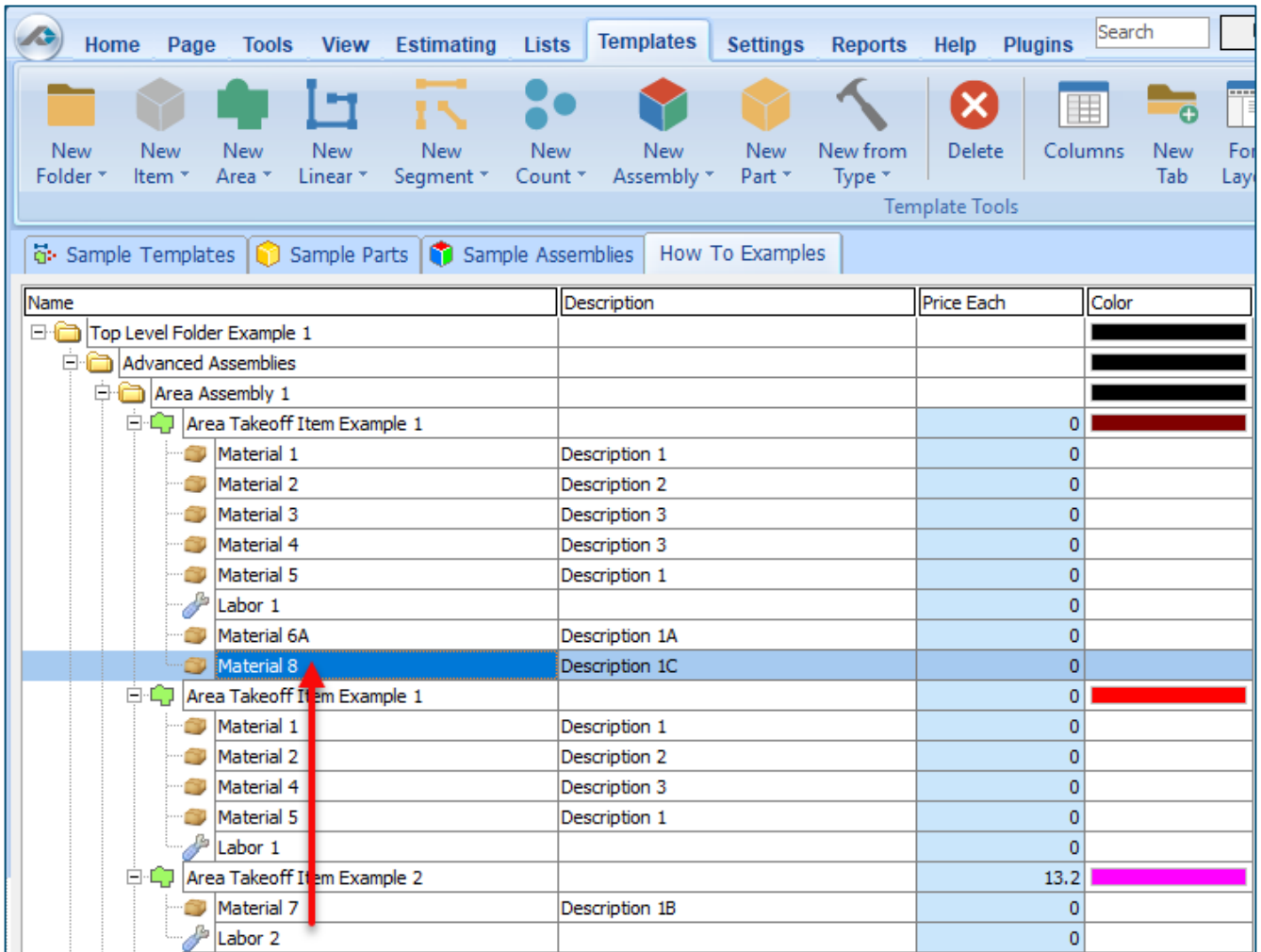


Figure 16

Notice that dragging the part this way *moves* the part from the **Example 2** assembly to the **Example 1** assembly, *not* leaving behind a copy.

The **Templates** sidebar window is a summarized view of everything in the Templates Tab. It is designed for easily dragging and dropping parts and for quickly launching takeoff templates and assemblies.

Parts may be dragged over from the **Templates** sidebar window into the **Templates Tab** window; note that dragging any part from the **Templates** sidebar window makes a copy of it. If, for instance, you want a **Material 7** item added to **Area Takeoff Item Example 1** as a sub-item, simply drag the **Material 7** from the right **Templates** sidebar window over on top of **Area Takeoff Item Example 1** label and release the mouse button. (Figure 17).

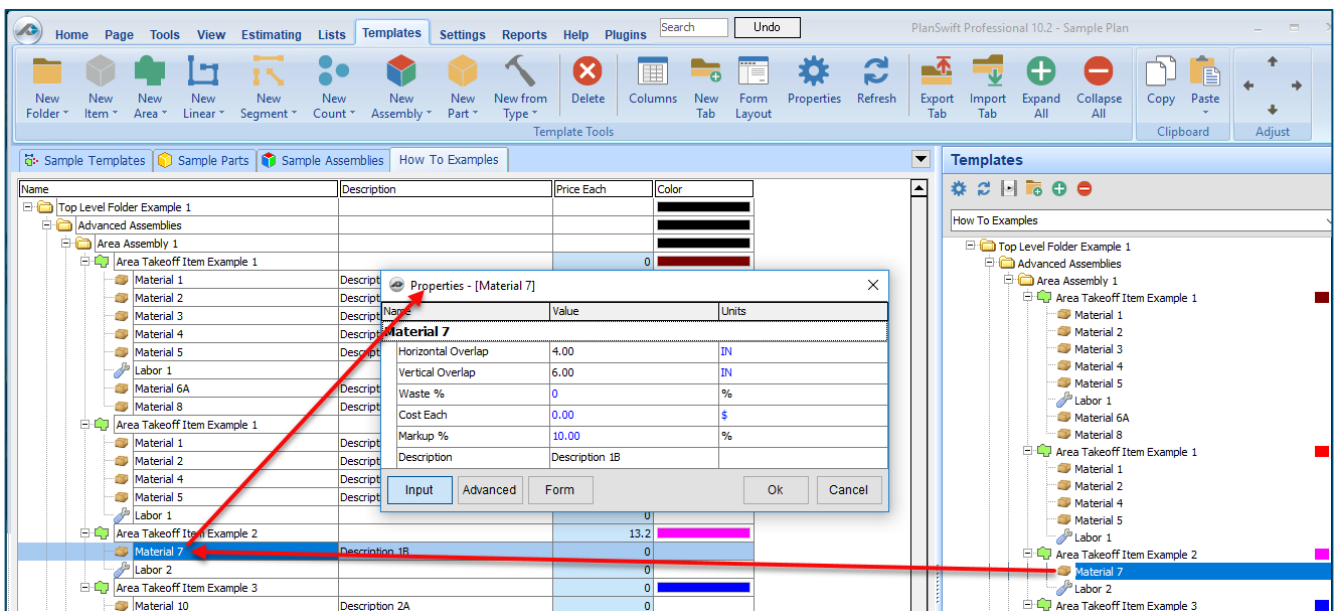


Figure 17

Figure 17 shows the **Material 7** item in place after it was dropped on top of **Area Takeoff Item Example 1**. In addition, the **Properties – [Material 7]** window automatically opens, allowing the user to change any properties for **Material 7**. Click on **Ok** to close the **Properties – [Material 7]** window.

Disclaimer

Any modifications that a user makes to a Starter Pack should always be tested and verified by that user to ensure quantities and calculations are accurate. PlanSwift cannot verify the accuracy of modifications made to templates, parts and assemblies by the user.

FAQ

Question: I've read this user guide, and I still have questions. What do I do?

Answer: PlanSwift recommends that you purchase a training package. We highly recommend new users purchase a training package, because training is customized to each user. We offer [one-on-one training](#) and [classroom training](#). Contact training@PlanSwift.com or at 1-888-752-6794 Ext. 4.

Question: Does the Starter Pack include everything a contractor will need to generate an estimate?

Answer: No. A Starter Pack is a tool to get you started toward creating a complete estimate. For example, the Starter Pack does not include industry pricing for materials and labor. However, you can supply prices for materials and labor on the assemblies and labor included in the Starter Pack.

Question: Do I have to input all the pricing for all my parts?

Answer: Inputting pricing is optional. You can use the Starter Pack to generate quantities that you can then send to your supplier, who can then provide you current pricing. Inputting pricing on your own is optional. If your industry's pricing is not subject to frequent changes, you may want to consider inputting your pricing in PlanSwift.

Compendium

Finish Carpentry Assemblies

Name	Description	Division	Type	Color
Base and Crown			Folder	
Advanced Assemblies			Folder	
Baseboard			Linear	
Baseboard	9/16" T x 7-1/4" W x 96" L, MDF Primed Standard		Material	
Baseboard Labor			Labor	
Cornice			Linear	
Cornice	5/8" T x 3-1/8" W x 96" L, MDF Primed Colonial		Material	
Cornice Labor			Labor	
Crown Molding			Linear	
Crown Molding	5/8" T x 3-1/8" W x 96" L, MDF Primed Colonial		Material	
Crown Molding Labor			Labor	
Crown Corner Block			Count	
Crown Corner Block	Crown Corner Block Oak Square		Material	
Corner Block Labor	Priced Each		Labor	
Inside Corner Base Block			Count	
Inside Corner Base Block	Inside Corner Base Block Oak Square		Material	
Corner Block Labor	Priced Each		Labor	
Outside Corner Base Block			Count	
Outside Corner Base Block	Outside Corner Base Block Oak Square		Material	
Corner Block Labor	Priced Each		Labor	
Basic Assemblies			Folder	
Baseboard			Linear	
Material	Baseboard		Material	
Labor	Baseboard		Labor	
Crown Molding			Linear	
Material	Crown Molding		Material	
Labor	Crown Molding		Labor	
Cornice			Linear	
Material	Cornice		Material	
Labor	Cornice		Labor	
Base and Crown			Linear	
Material	Base and Crown		Material	
Labor	Base and Crown		Labor	
Doors and Windows			Folder	
Advanced Assemblies			Folder	
Prehung Int. Door			Count	
Door			Material	
Door Knob			Material	
Door Stop			Material	
Labor			Labor	
Prehung Ext. Door			Count	
Door			Material	
Door Knob			Material	
Door Stop			Material	
Deadbolt			Material	
Labor			Labor	
French Door			Count	
Door			Material	
Door Knob			Material	
Door Stop			Material	
Deadbolt			Material	
Labor			Labor	
Case Corner Block			Count	
Case Crown Block	Case Crown Block		Material	
Corner Block Labor	Priced Each		Labor	
Uniform Door Casing			Segment	
Door Casing	1 1/16" T x 2-1/4" W x 96" L, MDF Primed Colonial		Material	
Door Casing Labor			Labor	

Finish Carpentry Assemblies -- Continued

Name	Description	Division	Type	Color
Window Casing			Segment	Green
Window Casing	11/16" T x 2-1/4" W x 96" L, MDF Primed Colonial		Material	
Window Casing Labor			Labor	
Door Header			Segment	Yellow
Door Header	11/16" T x 2-1/4" W x 192" L, MDF Primed Colonial		Material	
Door Header Labor			Labor	
Apron Molding			Segment	Blue
Apron Molding	11/16" T x 2-1/4" W x 192" L, MDF Primed Colonial		Material	
Apron Molding Labor			Labor	
Basic Assemblies			Folder	Black
Prehung Int. Door			Count	Pink
Material	Prehung Int. Door		Material	
Labor	Prehung Int. Door		Labor	
Sliding Closet Door			Count	Cyan
Material	Sliding Closet Door		Material	
Labor	Sliding Closet Door		Labor	
Folding Closet Door			Count	Brown
Material	Folding Closet Door		Material	
Labor	Folding Closet Door		Labor	
Prehung Ext. Door			Count	Green
Material	Prehung Ext. Door		Material	
Labor	Prehung Ext. Door		Labor	
French Door			Count	Olive
Material	French Door		Material	
Labor	French Door		Labor	
Sliding Door System			Count	Dark Blue
Material	Sliding Door System		Material	
Labor	Sliding Door System		Labor	
Pocket Door			Count	Purple
Material	Pocket Door		Material	
Labor	Pocket Door		Labor	
Door Casing			Segment	Teal
Material	Door Casing		Material	
Labor	Door Casing		Labor	
Window Casing			Segment	Red
Material	Window Casing		Material	
Labor	Window Casing		Labor	
Window Apron			Segment	Light Green
Material	Window Apron		Material	
Labor	Window Apron		Labor	

Finish Carpentry Assemblies -- Continued

Name	Description	Division	Type	Color
Paneling and Wainscot			Folder	
Advanced Assemblies			Folder	
Beadboard		07 00 00 Thermal and Moisture Protection	Linear	
8"W x 96" L Beadboard	Smooth, Primed	07 00 00 Thermal and Moisture Protection	Material	
Finish Nails	3600/Box, 4800 Sq Ft/Box	07 00 00 Thermal and Moisture Protection	Material	
Beadboard Labor		07 00 00 Thermal and Moisture Protection	Labor	
Chair Rail			Linear	
Chair Rail	5/8" T x 3-1/8" W x 96" L MDF Primed Colonial		Material	
Finish Nails	5000/Box	07 00 00 Thermal and Moisture Protection	Material	
Chair Rail Labor			Labor	
Paneling		07 00 00 Thermal and Moisture Protection	Linear	
96"W x 96" L Paneling	Smooth,	07 00 00 Thermal and Moisture Protection	Material	
Finish Nails	3600/Box, 19200 Sq Ft/Box	07 00 00 Thermal and Moisture Protection	Material	
Paneling Labor		07 00 00 Thermal and Moisture Protection	Labor	
Wainscot		07 00 00 Thermal and Moisture Protection	Linear	
36"W x 30" L Wainscot	Smooth,	07 00 00 Thermal and Moisture Protection	Material	
Finish Nails	3600/Box, 2250 Sq Ft/Box	07 00 00 Thermal and Moisture Protection	Material	
Wainscot Labor		07 00 00 Thermal and Moisture Protection	Labor	
Basic Assemblies			Folder	
Beadboard Planks			Linear	
Material	Beadboard Planks		Material	
Labor	Beadboard Planks		Labor	
Wainscot			Linear	
Material	Wainscot		Material	
Labor	Wainscot		Labor	
Paneling			Linear	
Material	Paneling		Material	
Labor	Paneling		Labor	
Chair Rail			Linear	
Material	Chair Rail		Material	
Labor	Chair Rail		Labor	

Finish Carpentry Assemblies -- Continued

Name	Description	Division	Type	Color
Shelving and Mantels			Folder	
Advanced Assemblies			Folder	
Shelving			Segment	
Shelving Material	3/4" x 14" x 144.00" MDF		Material	
Ledger Board	1/2" x 3-1/2" x 144" MDF		Material	
Hanger Rod	96" Minimum Length		Material	
Shelving Labor	Priced per Foot		Labor	
Wall Cap			Segment	
Wall Cap	1 1/16" T x 2-1/4" W x 96" L MDF Primed Colonial		Material	
Wall Cap Labor			Labor	
Mantel			Count	
Mantel Material	Oak Square		Material	
Mantel Labor	Priced Each		Labor	
Basic Assemblies			Folder	
Shelving			Segment	
Material	Shelving		Material	
Labor	Shelving		Labor	
Shelf and Rod			Segment	
Material	Shelf and Rod		Material	
Labor	Shelf and Rod		Labor	
Mantel			Segment	
Material	Mantel		Material	
Labor	Mantel		Labor	
Wall Cap			Segment	
Material	Wall Cap		Material	
Labor	Wall Cap		Labor	
Mantel			Count	
Material	Mantel		Material	
Labor	Mantel		Labor	

Finish Carpentry Assemblies -- Continued

Name	Description	Division	Type	Color
[-] Flooring and Decking			Folder	
[-] Advanced Assemblies			Folder	
[-] Hardwood Floor			Area	
Material	5"W x 72"L x 0.37"T Hardwood		Material	
Labor	Hardwood Floor		Labor	
[-] Wood Deck			Area	
Material	5+1/2"W x 192"L x 1+1/2"T Wood		Material	
Labor	Wood Deck		Labor	
[-] Composite Deck			Area	
Material	5+1/2"W x 192"L x 1+1/2"T Composite		Material	
Labor	Composite Deck		Labor	
[-] Basic Assemblies			Folder	
[-] Hardwood Floor			Area	
Material	Hardwood Floor		Material	
Labor	Hardwood Floor		Labor	
[-] Wood Deck			Area	
Material	Wood Deck		Material	
Labor	Wood Deck		Labor	
[-] Composite Deck			Area	
Material	Composite Deck		Material	
Labor	Composite Deck		Labor	
[-] Wood Railing			Linear	
Material	Wood Railing		Material	
Labor	Wood Railing		Labor	
[-] Composite Railing			Linear	
Material	Composite Railing		Material	
Labor	Composite Railing		Labor	
[-] Baseboard			Linear	
Material	Baseboard		Material	
Labor	Baseboard		Labor	
[-] Posts			Count	
Material	Posts		Material	
Labor	Posts		Labor	

Finish Carpentry Parts

Name	Description	Division	Type	Color
Base and Crown			Folder	
Area Takeoff Parts			Folder	
Crown Moulding EA	9/16" T x 7-1/4" W x 192" L Oak Unfinished Plain		Material	
Crown Moulding FT	9/16" T x 7-1/4" W x 192" L Oak Unfinished Plain		Material	
Beadboard EA	9/16" T x 7-1/4" W x 192" L Oak Unfinished Plain		Material	
Baseboard FT	9/16" T x 7-1/4" W x 192" L Oak Unfinished Plain		Material	
Cornice EA	9/16" T x 7-1/4" W x 192" L Oak Unfinished Plain		Material	
Cornice FT	9/16" T x 7-1/4" W x 192" L Oak Unfinished Plain		Material	
Material SQ FT			Material	
Labor SQ FT			Labor	
Baseboard Labor FT			Labor	
Crown Moulding Labor FT			Labor	
Linear Takeoff Parts			Folder	
Baseboard EA	9/16" T x 7-1/4" W x 96" L MDF Primed Standard Baseboard		Material	
Baseboard FT	9/16" T x 7-1/4" W x 192" L Oak Unfinished Plain		Material	
Crown Moulding EA	5/8" T x 3-1/8" W x 96" L MDF Primed Colonial Crown Moulding		Material	
Crown Moulding FT	9/16" T x 7-1/4" W x 192" L Oak Unfinished Plain		Material	
Cornice EA	5/8" T x 3-1/8" W x 96" L MDF Primed Colonial Cornice		Material	
Cornice FT	9/16" T x 7-1/4" W x 192" L Oak Unfinished Plain		Material	
Material SQ FT	Priced per SQ FT		Material	
Material FT	Priced per FT		Material	
Labor SQ FT	Priced per SQ FT		Labor	
Labor FT	Priced per FT		Labor	
Baseboard Labor FT			Labor	
Crown Moulding Labor FT			Labor	
Count Takeoff Parts			Folder	
Inside Corner Base Block	Inside Corner Base Block		Material	
Material EA			Material	
Labor EA			Labor	
Doors and Windows			Folder	
Area Takeoff Parts			Folder	
Material SQ FT			Material	
Labor SQ FT			Labor	
Linear Takeoff Parts			Folder	
Uniform Door Casing	1 1/16" T x 2+1/4" W x 96" L Hickory Smooth Plain		Material	
Uniform Window Casing	1 1/16" T x 2+1/4" W x 96" L Hickory Smooth Plain		Material	
Door Header	1 1/16" T x 2+1/4" W x 96" L Hickory Smooth Plain		Material	
Material FT	Priced per FT		Material	
Material SQ FT	Priced per SQ FT		Material	
Labor SQ FT	Priced per SQ FT		Labor	
Labor FT	Priced per FT		Labor	
Count Takeoff Parts			Folder	
Door Casing	1 1/16" T x 2+1/4" W x 96" L Hickory Smooth Plain		Material	
Case Crown Block	Case Crown Block		Material	
Prehung Door			Material	
Door Knob			Material	
Door Stop			Material	
Deadbolt			Material	
Material EA			Material	
Labor EA			Labor	

Finish Carpentry Parts -- Continued

Name	Description	Division	Type	Color
Paneling and Wainscot			Folder	██████
Area Takeoff Parts			Folder	██████
12"W x 36" L Wainscot	Smooth, Monterey Taupe	07 00 00 Thermal and Moisture Protection	Material	
Material SQ FT			Material	
Labor SQ FT			Labor	
Linear Takeoff Parts			Folder	██████
12"W x 36" L Wainscot	Smooth, Monterey Taupe	07 00 00 Thermal and Moisture Protection	Material	
96"W x 96" L Paneling	Unfinished, Primed	07 00 00 Thermal and Moisture Protection	Material	
11+7/8"W x 36" L Beadboard	Unfinished, Primed	07 00 00 Thermal and Moisture Protection	Material	
Material FT	Priced per FT		Material	
Material SQ FT	Priced per SQ FT		Material	
Wainscot Labor	Priced per SQ FT		Labor	
Paneling Labor	Priced per SQ FT		Labor	
Labor SQ FT	Priced per SQ FT		Labor	
Labor FT	Priced per FT		Labor	
Count Takeoff Parts			Folder	██████
Material EA			Material	
Labor EA			Labor	
Shelving and Mantels			Folder	██████
Area Takeoff Parts			Folder	██████
Material SQ FT			Material	
Shelving Material	3/4" x 14" x 144" MDF		Material	
Labor SQ FT			Labor	
Linear Takeoff Parts			Folder	██████
Shelving Material	3/4" x 14" x 144.00" MDF		Material	
Ledge Board	5/16" x 2+3/4" x 192" Laminate		Material	
Hanger Rod	96" Minimum Length		Material	
Material SQ FT	Priced per SQ FT		Material	
Material FT	Priced per FT		Material	
Shelving Labor	Priced per Foot		Labor	
Labor SQ FT	Priced per SQ FT		Labor	
Labor FT	Priced per FT		Labor	
Count Takeoff Parts			Folder	██████
Mantel Material	Hardwood Square		Material	
Material EA			Material	
Mantel Labor	Priced Each		Labor	
Labor EA			Labor	
Stairs and Handrails			Folder	██████
Area Takeoff Parts			Folder	██████
12"W x 36" L Stair Treads	Smooth, Primed	07 00 00 Thermal and Moisture Protection	Material	
Material SQ FT			Material	
Labor SQ FT			Labor	
Linear Takeoff Parts			Folder	██████
Balusters	44-IN Wrought Iron Twist, 4.50" Spacing	06 00 00 Wood, Plastics, and Composites	Material	
Handrail	Unfinished Red Oak Plowed, 2.25 IN x 16.00 FT	06 00 00 Wood, Plastics, and Composites	Material	
Material FT			Material	
Handrail Labor			Labor	
Labor FT			Labor	
Count Takeoff Parts			Folder	██████
Newel Post	3" x 42" Oak Square		Material	
Material EA			Material	
Post Labor			Labor	
Labor EA			Labor	

Finish Carpentry Parts -- Continued

Name	Description	Division	Type	Color
└─ Flooring and Decking			Folder	█
└─└─ Area Takeoff Parts			Folder	█
└─└─└─ Wood Deck	5+1/2"W x 192"L x 1+1/2"T Wood		Material	
└─└─└─ Composite Deck	5+1/2"W x 192"L x 7/8"T Composite		Material	
└─└─└─ Material SQ FT	Price/SQ FT		Material	
└─└─└─ Flooring Labor	Price/SQ FT		Labor	
└─└─└─ Deck Labor	Price/SQ FT		Labor	
└─└─└─ Hardwood Flooring Material	5+1/2"W x 72"L x 3/8"T Maple		Material	
└─└─ Linear Takeoff Parts			Folder	█
└─└─└─ Wood Railing	Price/FT		Material	
└─└─└─ Iron Railing	Price/FT		Material	
└─└─└─ Composite Railing	Price/FT		Material	
└─└─└─ Baseboard	Price/FT		Material	
└─└─└─ Railing Labor	Price/FT		Labor	
└─└─└─ Material FT	Price/FT		Material	
└─└─└─ Labor FT	Price/FT		Labor	
└─└─ Count Takeoff Parts			Folder	█
└─└─└─ Post	Price/EA		Material	
└─└─└─ Step	Price/EA		Material	
└─└─└─ Post Labor	Price/EA		Labor	
└─└─└─ Material EA	Price/EA		Material	
└─└─└─ Step Labor	Price/EA		Labor	
└─└─└─ Labor EA	Price/EA		Labor	