

# PlanSwift 10.02.05

## Spring 2020 Release (March 19, 2020)

### Table of Contents

Features .....	2
New Markup Tools .....	2
Arrow Markups .....	2
Box/Rectangular Markups .....	4
Pen (line) Markups .....	6
CSI Assemblies .....	8
New PlanSwift Tab .....	9
Changes .....	10
Feature Improvement Analytics .....	10
Improvements to Activation/Licensing .....	10
Updated System Requirements .....	10
Fixes .....	12

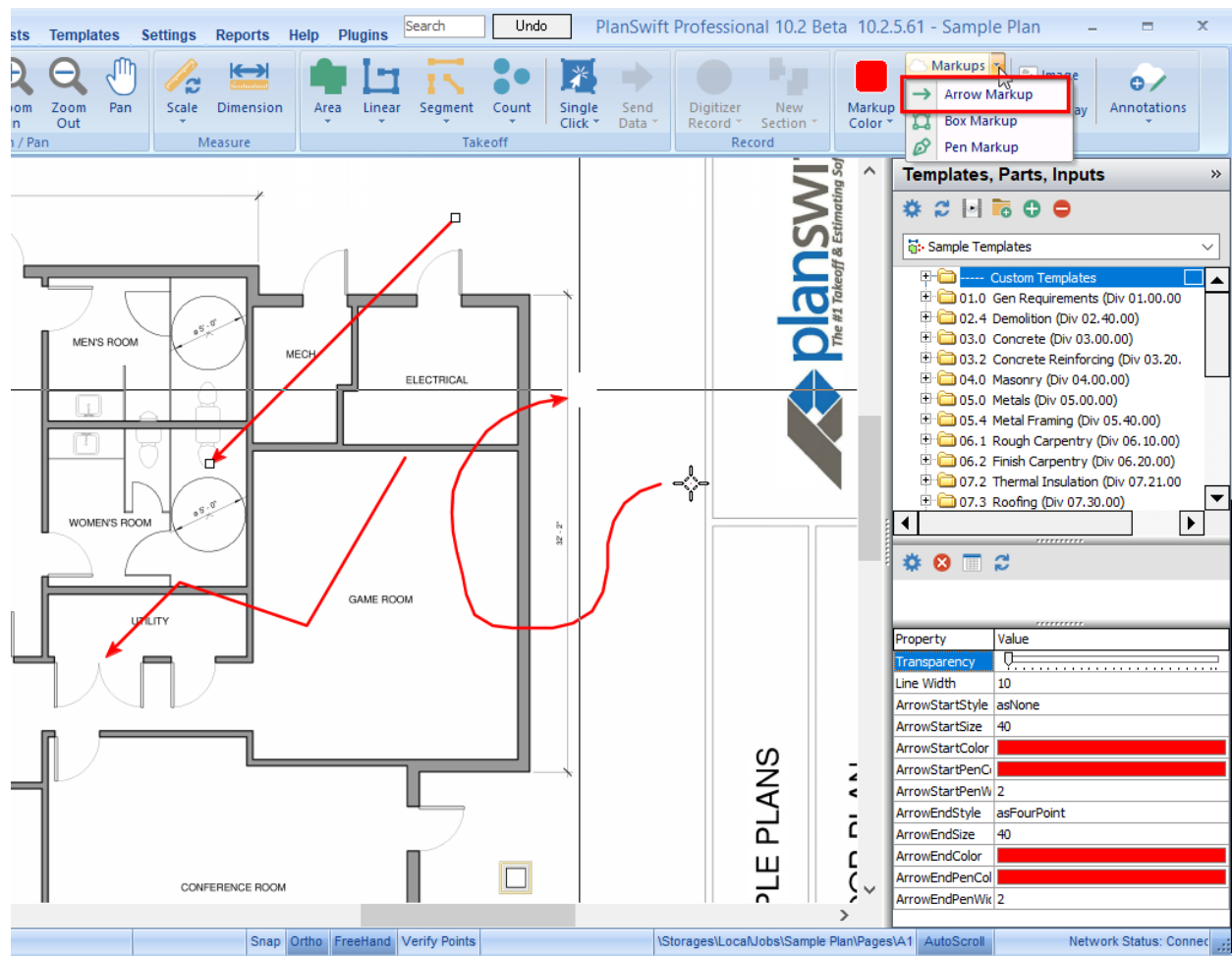
## Features

### New Markup Tools

We've added three great new Markups tools: Arrow, Box, and Pen. Set your Markup Color before drawing boxes to whatever you like.

### Arrow Markups

Using the Arrow Markup tool, you can draw a single segment or multiple segment arrow. Just like all drawing objects, you can use Normal or Freehand to draw straight or squiggly segments. You can also arc a segment by pressing "A", like Linear takeoff.



You can set color before drawing the arrow and use the Properties panel after you've drawn an arrow to set additional properties including line width, arrow head size and shape, and tail size and shape.

### Drawing a straight, single-segment arrow

1. (Optional) Select Markup Color (defaults to red)
2. Click Markups > Arrow

3. Click on your plan where you want the tail end of the arrow anchored
4. Locate the point where you want the arrowhead anchored
5. Double-click that point to save your markup
6. Press ESC twice or click the Stop Recording button

#### *Drawing a straight multi-segment arrow*

1. (Optional) Select Markup Color (defaults to red)
2. Click Markups > Arrow
3. Click on your plan where you want the tail end of the arrow anchored
4. Click on the point where you want the next point anchored
5. Continue clicking on points until you get to the point where you want your arrowhead anchored
6. Double-click to save your markup
7. Press ESC twice or click the Stop Recording button

#### *Drawing a Freehand arrow*

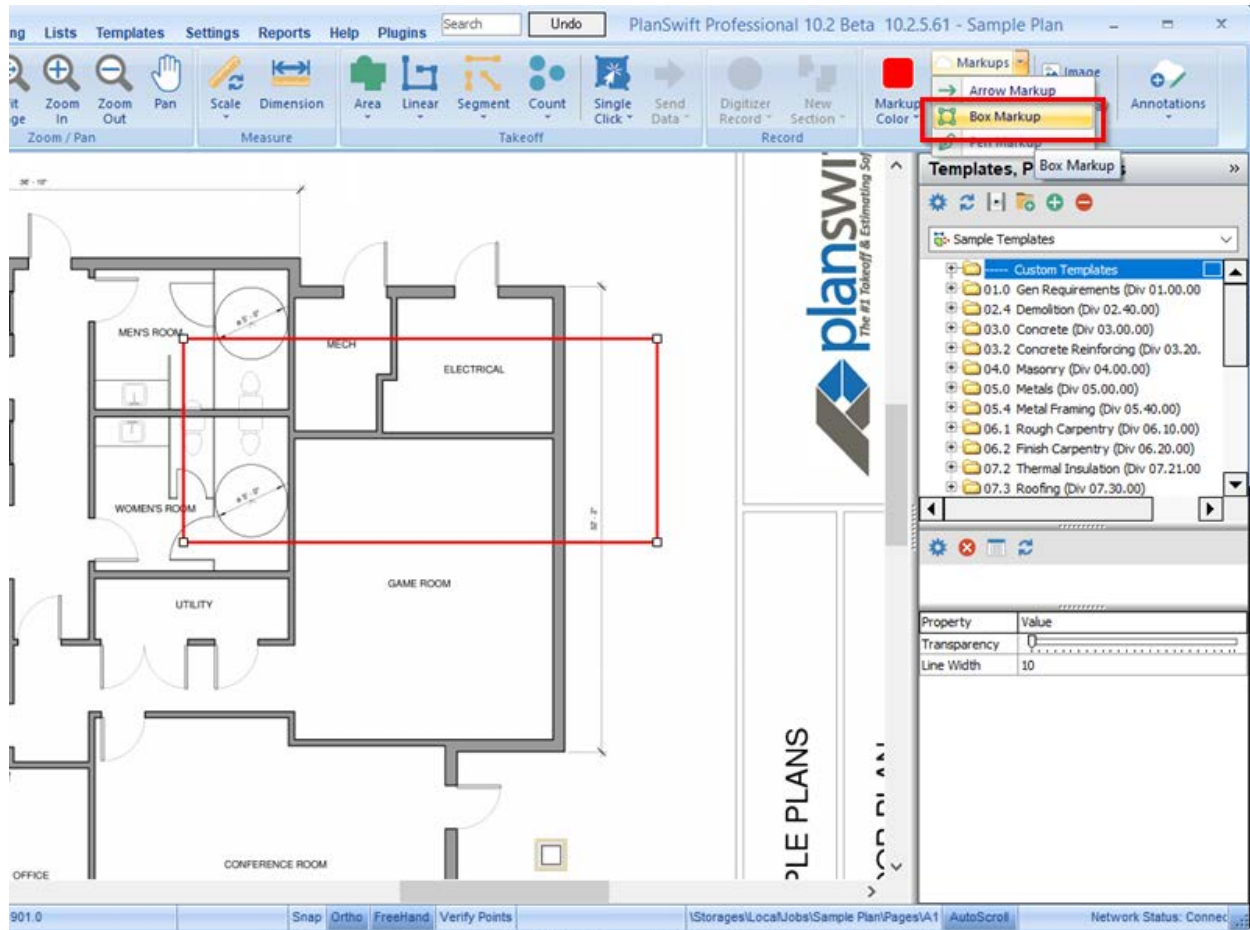
1. (Optional) Select Markup Color (defaults to red)
2. Click Markups > Arrow
3. Click the **Freehand** toggle at the bottom of the PlanSwift screen
4. Click on your plan where you want the tail end of the arrow anchored
5. Hold down the mouse button until you see the tooltip change to “Freehand”
6. Click and drag – the segment follows the mouse cursor.
7. Double-click on the point where you want to set your arrowhead to save your markup
8. Press ESC twice or click the Stop Recording button

#### *Drawing an arced arrow*

1. (Optional) Select Markup Color (defaults to red)
2. Click Markups > Arrow
3. Click on your plan where you want the tail end of the arrow anchored
4. At the start of your arc, click where you want to anchor the first point of the arc
5. Press “A” on your keyboard (the tooltip changes explains how to draw an arc)
6. The next two points define the size and scale of the arc – it takes a little trial and error to get the hang of drawing arcs.
7. Continue clicking points until you get to the place where you want your arrowhead anchored
8. Double-click to save your markup
9. Press ESC twice or click the Stop Recording button

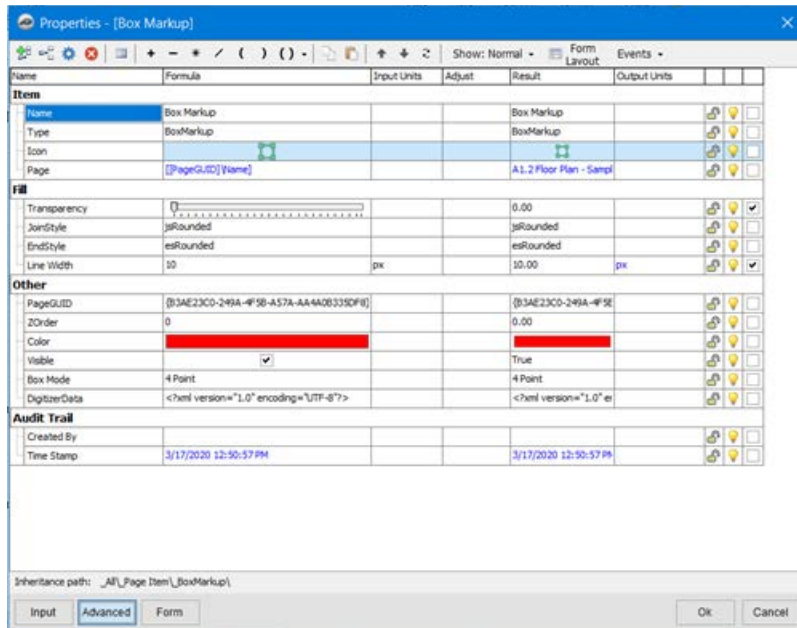
## Box/Rectangular Markups

Using the Box Markup tool, you can draw a box around a region of your plan to emphasize something important.



You can set color before drawing the box and use the Properties panel after you've drawn a box to set additional properties including line width with transparency.

To adjust color and access all the properties for a box, right click on the box and select "Properties" from the context menu.



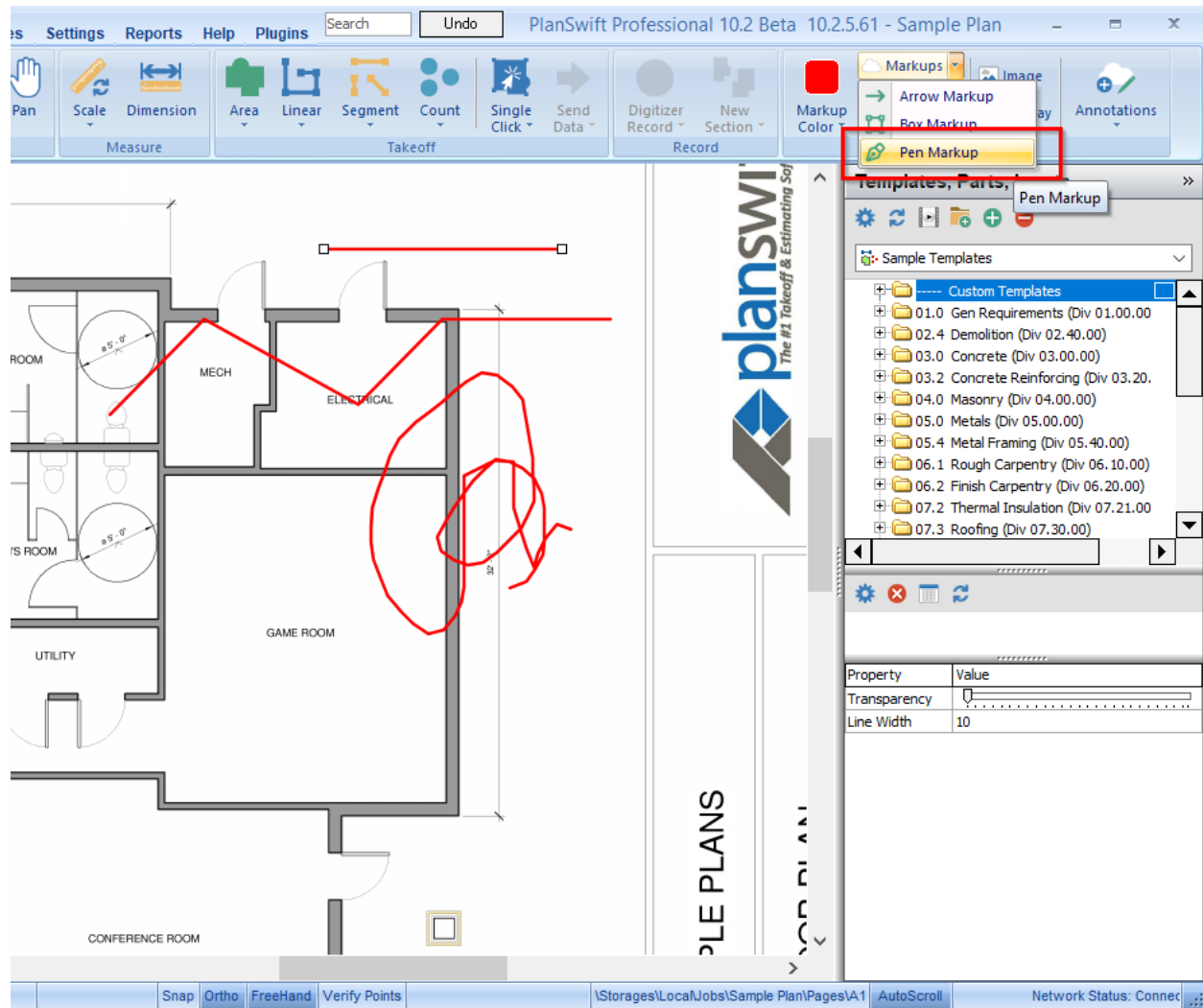
From the Advanced view of the Box Markup Properties window, you can set adjust color.

### *Drawing a box markup*

1. (Optional) Select Markup Color (defaults to red)
2. Click Markups > Box
3. Click on your plan where you want the first corner of the box anchored
4. Locate the point where you want the opposite corner (diagonally) anchored
5. Double-click that point to save your markup
6. Press ESC twice or click the Stop Recording button

## Pen (line) Markups

Using the Pen Markup tool, you can draw a straight line, a series of connected segments, or even a Freehand (squiggly) line on your plan. You can also arc a segment by pressing “A”, like Linear takeoff.



You can set color before drawing the line and use the Properties panel after you've drawn a line to set additional properties including line width with transparency.

To adjust color and access all the properties for a pen markup, right click on a segment and select “Properties” from the context menu. From the Advanced view of the Pen Markup Properties window, you can set adjust color (just like Box Markups).

### *Drawing a straight, single-segment Pen/line markup*

1. (Optional) Select Markup Color (defaults to red)
2. Click Markups > Pen markup
3. Click on your plan where you want the tail end of the pen/line markup anchored

4. Locate the point where you want the pen/line to end
5. Double-click to save your markup
6. Press ESC twice or click the Stop Recording button

#### *Drawing a straight multi-segment pen/line markup*

1. (Optional) Select Markup Color (defaults to red)
2. Click Markups > Pen markup
3. Click on your plan where you want the tail end of the pen/line markup anchored
4. Click on the point where you want the next point anchored
5. Continue clicking on points until you get to the point where you want your Pen/line markup to end
6. Double-click to save your markup
7. Press ESC twice or click the Stop Recording button

#### *Drawing a Freehand pen/line markup*

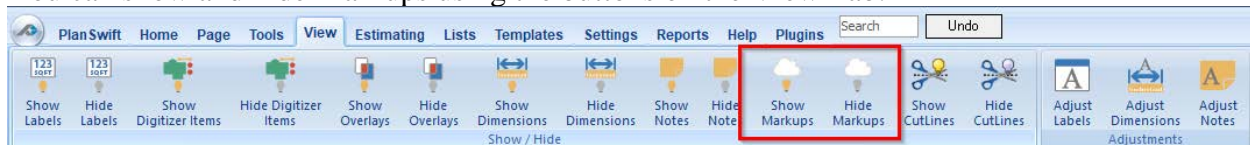
1. (Optional) Select Markup Color (defaults to red)
2. Click Markups > Pen markup
3. Click the **Freehand** toggle at the bottom of the PlanSwift screen
4. Click on your plan where you want the tail end of the pen/line markup anchored
5. Hold down the mouse button until you see the tooltip change to “Freehand”
6. Click and drag – the segment follows the mouse cursor.
7. Double-click to save your Pen/line markup
8. Press ESC twice or click the Stop Recording button

#### *Drawing an arced pen/line markup*

1. (Optional) Select Markup Color (defaults to red)
2. Click Markups > Pen markup
3. Click on your plan where you want the tail end of the pen/line markup anchored
4. At the start of your arc, click where you want to anchor the first point of the arc
5. Press “A” on your keyboard (the tooltip changes explains how to draw an arc)
6. The next two points define the size and scale of the arc – it takes a little trial and error to get the hang of drawing arcs.
7. Continue clicking points until you get to the place where you want your Pen/line markup to end
8. Double-click to save your markup
9. Press ESC twice or click the Stop Recording button

#### Show/Hide Markups

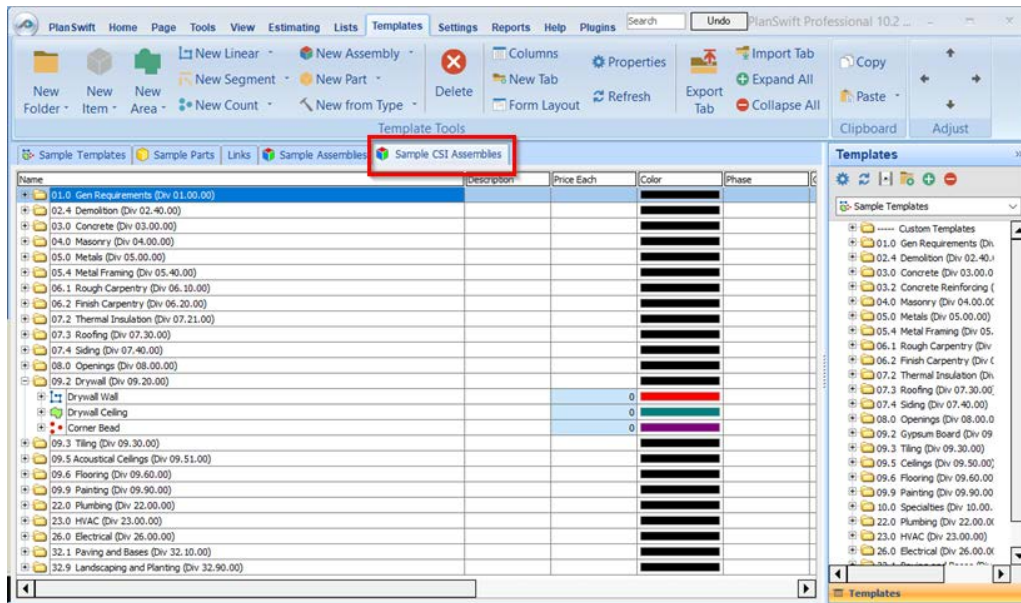
You can show and hide Markups using the buttons on the View Tab:



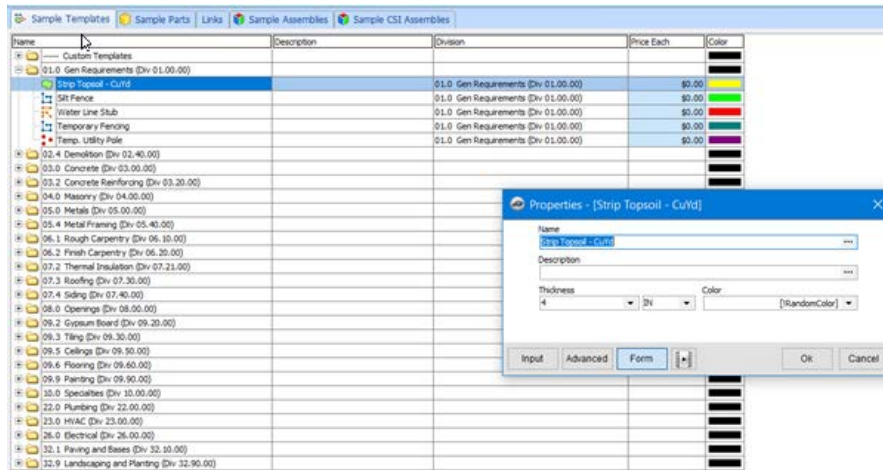


## CSI Assemblies

Imperial Installations: You can now access a new set of Assemblies based on CSI. We've built dozens of new Assemblies that you can use immediately or as templates for your own, custom Assemblies.



To see details about an Assembly, expand the Section (click the little box with the plus sign to the left of the section number and name). Then, just double-click on an assembly to open its properties.



Click "Advanced" to see all the properties for an Assembly.

For more information about using Assemblies, please see the PlanSwift documentation – click the Help Tab to find the User Guide, Training Videos, and other resources available.



## New PlanSwift Tab

We know that PlanSwift is a powerful and amazing product with innumerable features and customization possibilities. We also know that all those features and customizations can be a bit intimidating to new users and many feature may go un-used because our users are simply not aware of them. So we created a PlanSwift Tab that is a place where we can share Getting Started resources, tips and tricks, and company news with you. You'll also find links to online resources such as the user guide, training videos, and ways to contact Support and Training.

The screenshot displays the PlanSwift Professional 10.2 Beta software interface. At the top, there is a menu bar with options like Home, Page, Tools, View, Estimating, Lists, Templates, Settings, Reports, Help, and Plugins. Below the menu is a toolbar with icons for New, Open, Email, Software License, Job, Options, and Licensing. The main content area features a dark blue banner for "PlanSwift + ConstructConnect" with the tagline "The Best Just Got Better". The banner includes a brief description of the software's capabilities and two buttons: "I'm a General Contractor" and "I'm a Subcontractor". Below the banner is a section titled "Video Tutorials / Information" with four video thumbnails and their descriptions:

- What's New in 10.2** (4m 56s): Check out what's new in PlanSwift 10.2! New markups make it easier to add Arrows and Boxes. Use Pen Markup to draw anything on your plans. Sample CSI Assemblies put you on the fast track to better and more efficient estimates.
- Getting Started** (5m 10s): Getting Started with PlanSwift is as easy as 1, 2, 3! First, set up your project. 2. Second, set your scale and perform your takeoffs. Third, print or export your quantities.
- Takeoff Tips and Tricks** (3m 40s): Great Takeoffs are more than just Area, Length, and Count. See how to add a Takeoff Legend, Show Labels, Subtract Areas, Do Curved Takeoffs, Use Hotkeys and more!
- Template Tips and Tricks** (4m 23s): Be more efficient with Templates. PlanSwift offers an easy way to build and manage Templates. Get started with our Samples or build your own. Templates are the next level of Takeoffs and Estimating.

At the bottom of the interface, there are three columns of contact information:

- Training Resources:** User Guide, Frequently Asked Questions (FAQ's)
- By Email:** support@planswift.com
- By Phone:** +1 (888) 752-6794

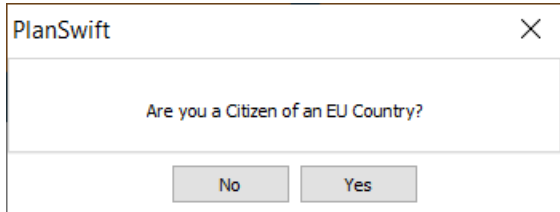
We plan to update content frequently so be sure to check the PlanSwift Tab every day for the latest news from PlanSwift by ConstructConnect and ways to get more value from your software than ever.

## Changes

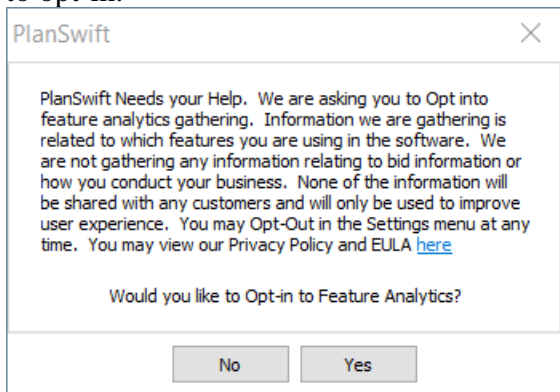
### Feature Improvement Analytics

We always strive to make improvements and add features to PlanSwift that our customers see as valuable and that improve your experience using PlanSwift. To that end, we've implemented analytics to help our product team understand how users use various features and screens in PlanSwift. No bid information is ever captured, and you can always opt out on the Settings Tab.

When you first launch PlanSwift after this upgrade, you are prompted to identify as a citizen of the E.U.



If you answer "yes" that you are a citizen of the European Union, you are given the opportunity to opt-in.



You can always opt in or out on the Settings Tab.

### Improvements to Activation/Licensing

Previous versions of PlanSwift 10 had a few issues with connecting to our cloud-based licensing services at times which could cause the licensing dialog boxes to freeze up or display incorrect information. We've improved this workflow to make licensing an easier, more stable process.

### Updated System Requirements

As time marches on, PlanSwift is committed to keeping up with the latest operating systems and technology improvements. This often means updating our System Requirements.

<https://constructconnect-help.atlassian.net/wiki/spaces/PSUPPORT/pages/34244808/System+Requirements>



## Fixes

- Unlicensed users could add/edit/delete takeoff in a project if that project already included takeoff.
- Several application windows' text or branding was corrected to make them easier to understand and aligned with new ConstructConnect affiliation.
-